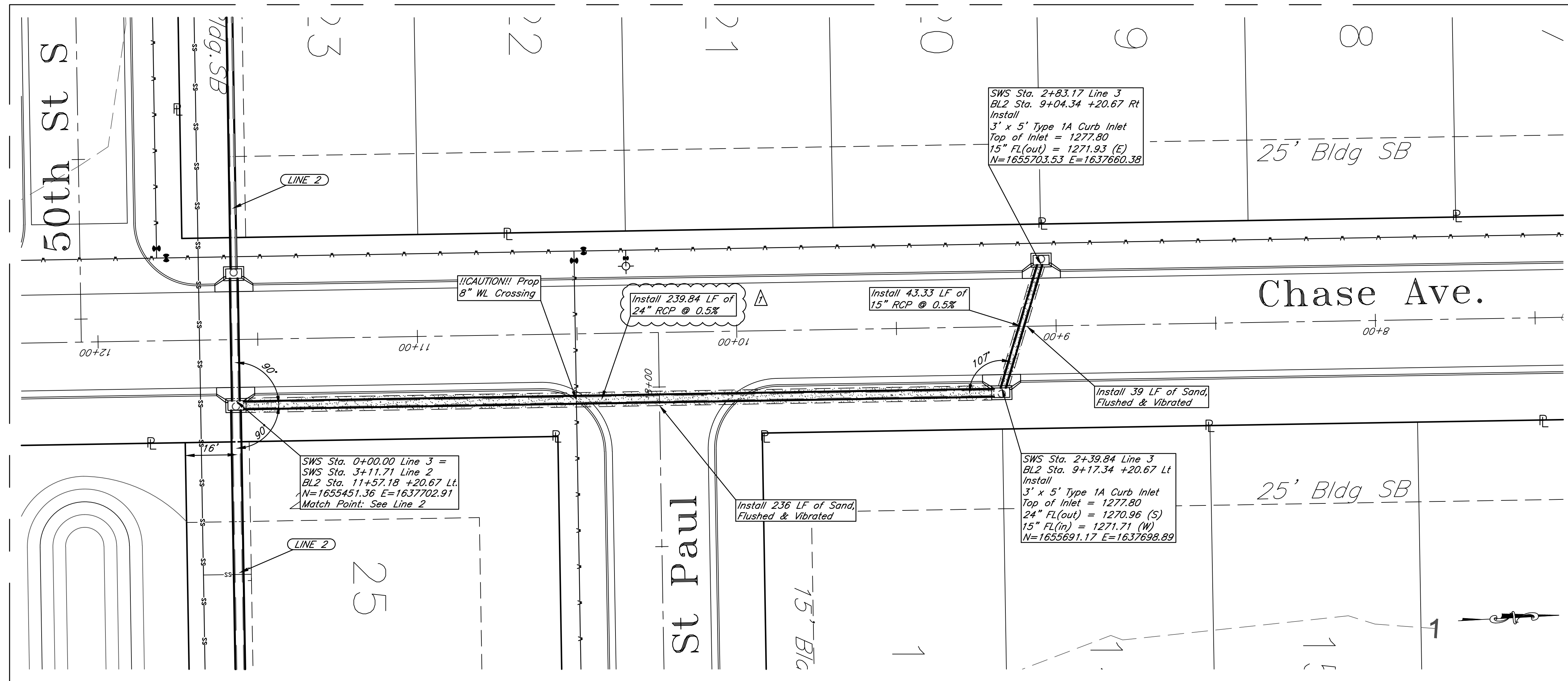


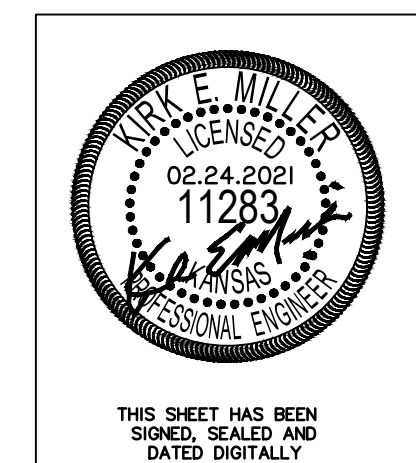
Revised Quantity of Sand, Flushed and Vibrated
02/24/2021



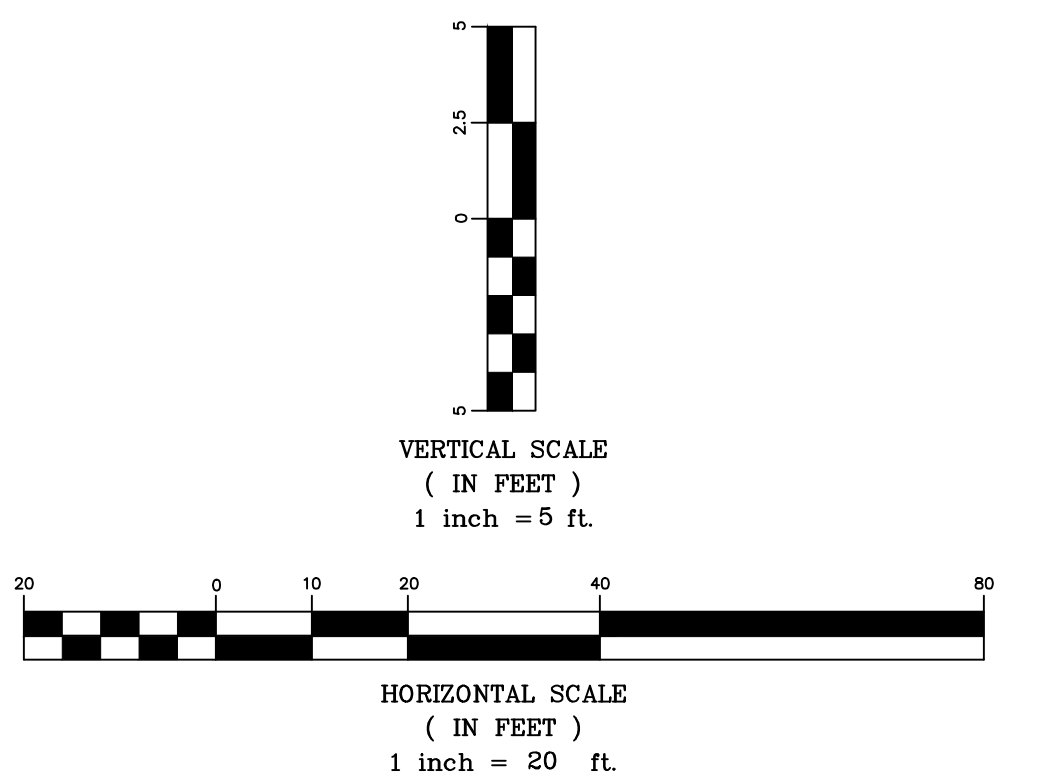
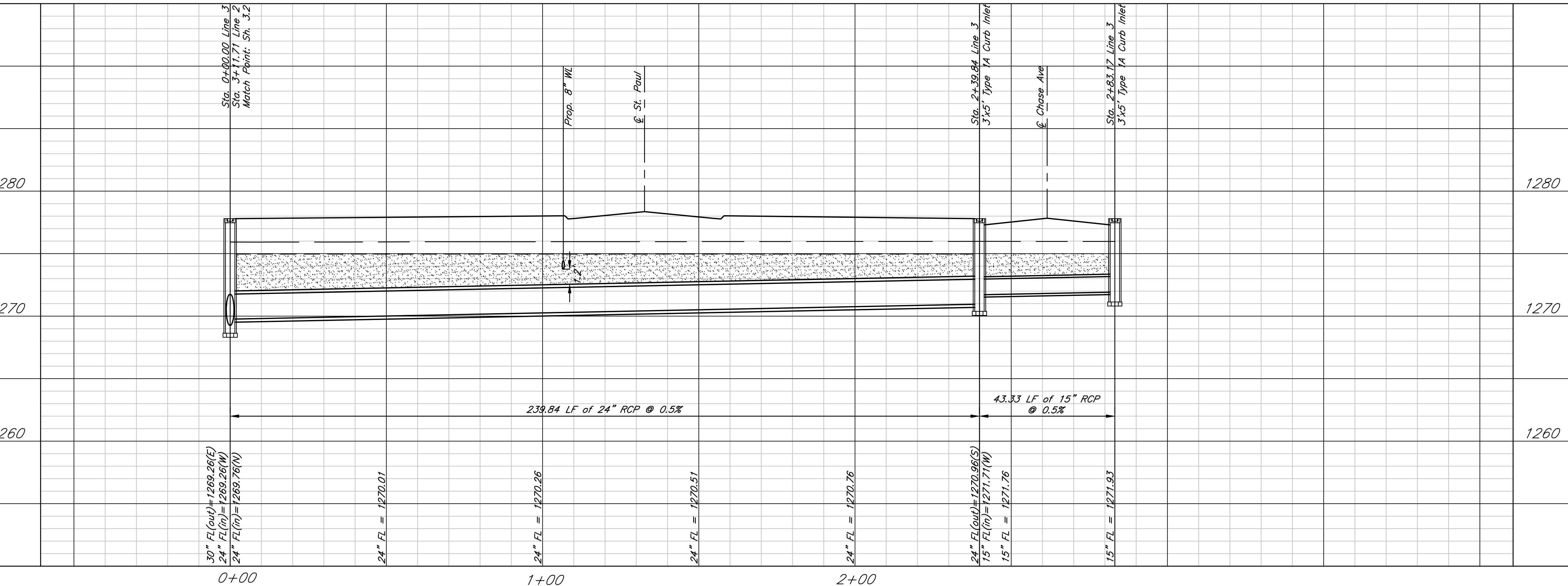
SWS Sta. 2+83.17 Line 3
BL2 Sta. 9+04.34 +20.67 Rt
Install
3' x 5' Type 1A Curb Inlet
Top of Inlet = 1277.80
15" FL(out) = 1271.93 (E)
N=1655703.53 E=1637660.38

SWS Sta. 0+00.00 Line 3 =
SWS Sta. 3+11.71 Line 2
BL2 Sta. 11+57.18 +20.67 Lt.
N=1655451.36 E=1637702.91
Match Point: See Line 2

SWS Sta. 2+39.84 Line 3
BL2 Sta. 9+17.34 +20.67 Lt
Install
3' x 5' Type 1A Curb Inlet
Top of Inlet = 1277.80
24" FL(out) = 1270.96 (S)
15" FL(in) = 1271.71 (W)
N=1655691.17 E=1637698.89



THIS SHEET HAS BEEN
SIGNED, SEALED AND
DATED DIGITALLY



Fox Run Addition (Phase II)
SWS Plan & Profile - Line 3
Wichita, Kansas

 117 E. Lewis, Wichita, KS 67202 (316)284-0242	PROJECT NUMBER 468-2020-085451			SHEET 3.3
	KEM NO. 20061 DESIGN ME	FILE SWS DRAWN ZS	DATE 09/2020 REVISED 02/24/2021	

February 25, 2021