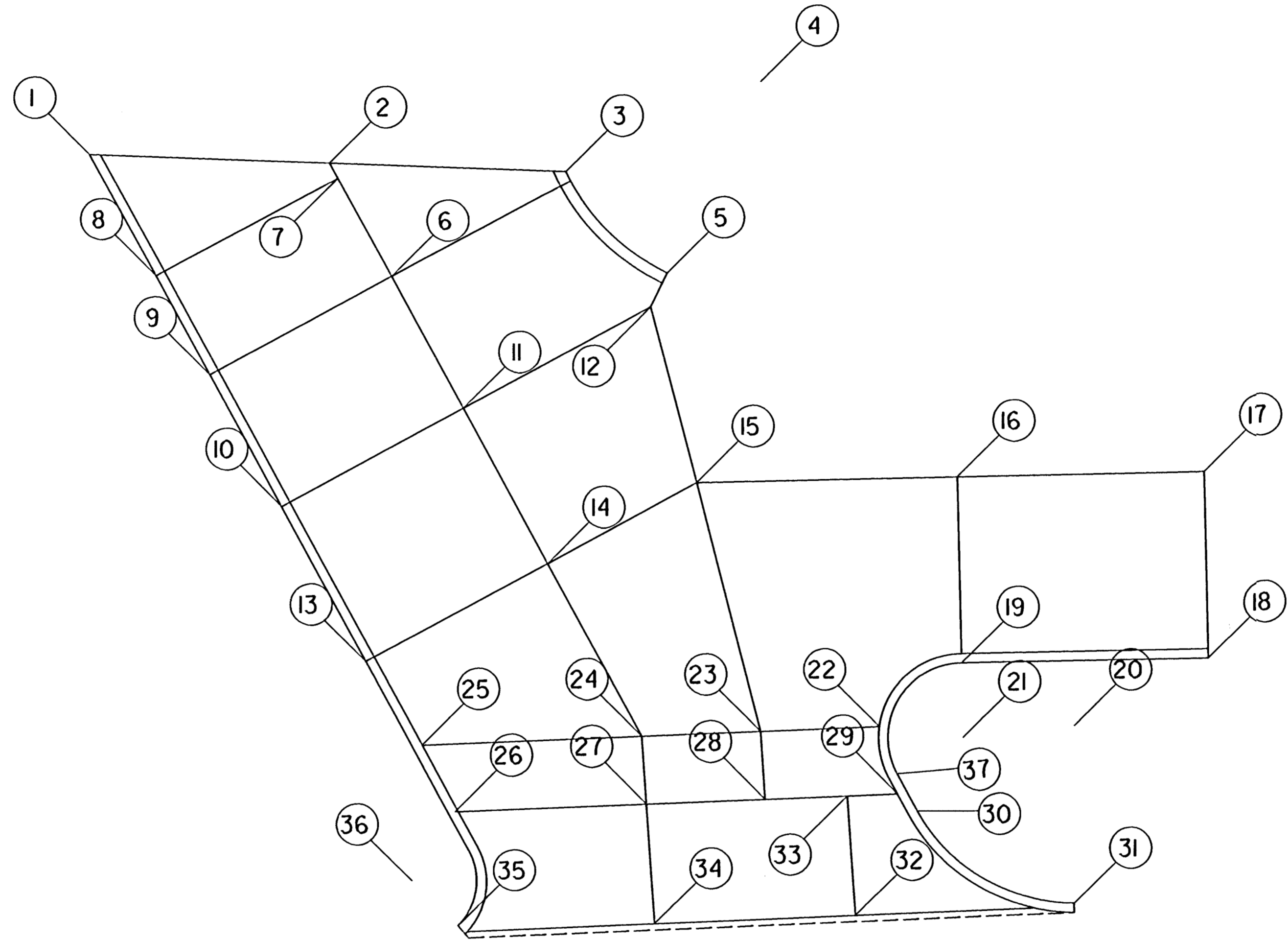


DRIVEWAY CONTROL POINTS			
REFERENCE	POINT	STATION	OFFSET
Control Point	1	68+65.37	81.27' Lt.
Control Point	2	68+78.13	80.82' Lt.
P.C. Curve #1	3	68+90.72	80.37' Lt.
C.C. Curve #1	4	69+01.09	85.20' Lt.
P.T. Curve #1	5	68+96.11	74.90' Lt.
Control Point	6	68+81.45	74.72' Lt.
Control Point	7	68+78.58	79.99' Lt.
Control Point	8	68+68.92	74.74' Lt.
Control Point	9	68+71.78	69.47' Lt.
Control Point	10	68+75.60	62.44' Lt.
Control Point	11	68+85.26	67.69' Lt.
Control Point	12	68+95.24	73.10' Lt.
Control Point	13	68+80.08	54.18' Lt.
Control Point	14	68+89.74	59.43' Lt.
Control Point	15	68+97.68	63.74' Lt.
Control Point	16	69+11.55	64.05' Lt.
Control Point	17	69+24.67	64.34' Lt.
Control Point	18	69+24.90	54.40' Lt.
P.C. Curve #2	19	69+11.78	54.13' Lt.
C.C. Curve #2	20	69+17.77	50.78' Lt.
C.C. Curve #3	21	69+11.86	50.13' Lt.
Control Point	22	69+07.40	50.72' Lt.
Control Point	23	69+01.08	50.45' Lt.
Control Point	24	68+94.76	50.19' Lt.
Control Point	25	68+83.08	49.70' Lt.
Control Point	26	68+84.83	46.18' Lt.
Control Point	27	68+95.01	46.60' Lt.
Control Point	28	69+01.33	46.87' Lt.
Control Point	29	69+08.36	47.16' Lt.
P.C. Curve #3	30	69+09.42	46.25' Lt.
P.T. Curve #3	31	69+17.77	41.28' Lt.
Control Point	32	69+06.14	40.60' Lt.
Control Point	33	69+05.70	47.05' Lt.
Control Point	34	68+95.45	40.13' Lt.
P.C. Curve #4	35	68+84.99	40.01' Lt.
C.C. Curve #4	36	68+82.53	42.44' Lt.
P.T. Curve #2	37	69+08.35	48.23' Lt.



PLAN
6' Concrete Driveway Pavement (Reinforced)

Curve Data Curve #1
Referenced at back of curb
 $\Delta = 39^{\circ}23'7''$
R = 11.44'

Curve Data Curve #2
Referenced at back of curb
 $\Delta = 117^{\circ}18'8''$
R = 4.00'

Curve Data Curve #3
Referenced at back of curb
 $\Delta = 61^{\circ}30'19''$
R = 9.50'

Curve Data Curve #4
Referenced at back of curb
 $\Delta = 68^{\circ}28'54''$
R = 3.45'

See Sheet No. C83 for Summary of Quantities

No.	Revisions	By	Date
CITY OF WICHITA, KANSAS MICHAEL E. LINDEBAK, P.E.-CITY ENGINEER DOUGLAS AVENUE BRIDGE OVER ARKANSAS RIVER DRIVEWAY DETAILS CITY OF WICHITA PROJECT NO. 472-82721 PROFESSIONAL ENGINEERING CONSULTANTS, P.A. ENGINEERS WICHITA, KANSAS			
Designed by	R.A.S.	Checked by	R.A.S.
Drawn by	R.A.S.	Date	Sept. 1997 Job No. 95088-4