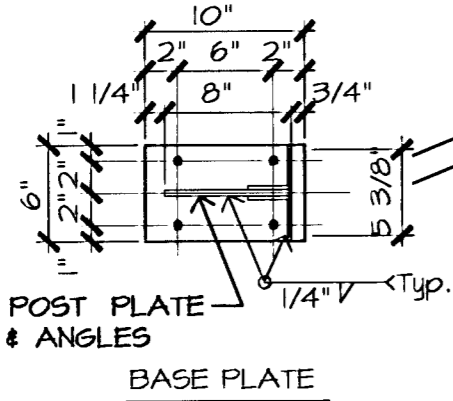
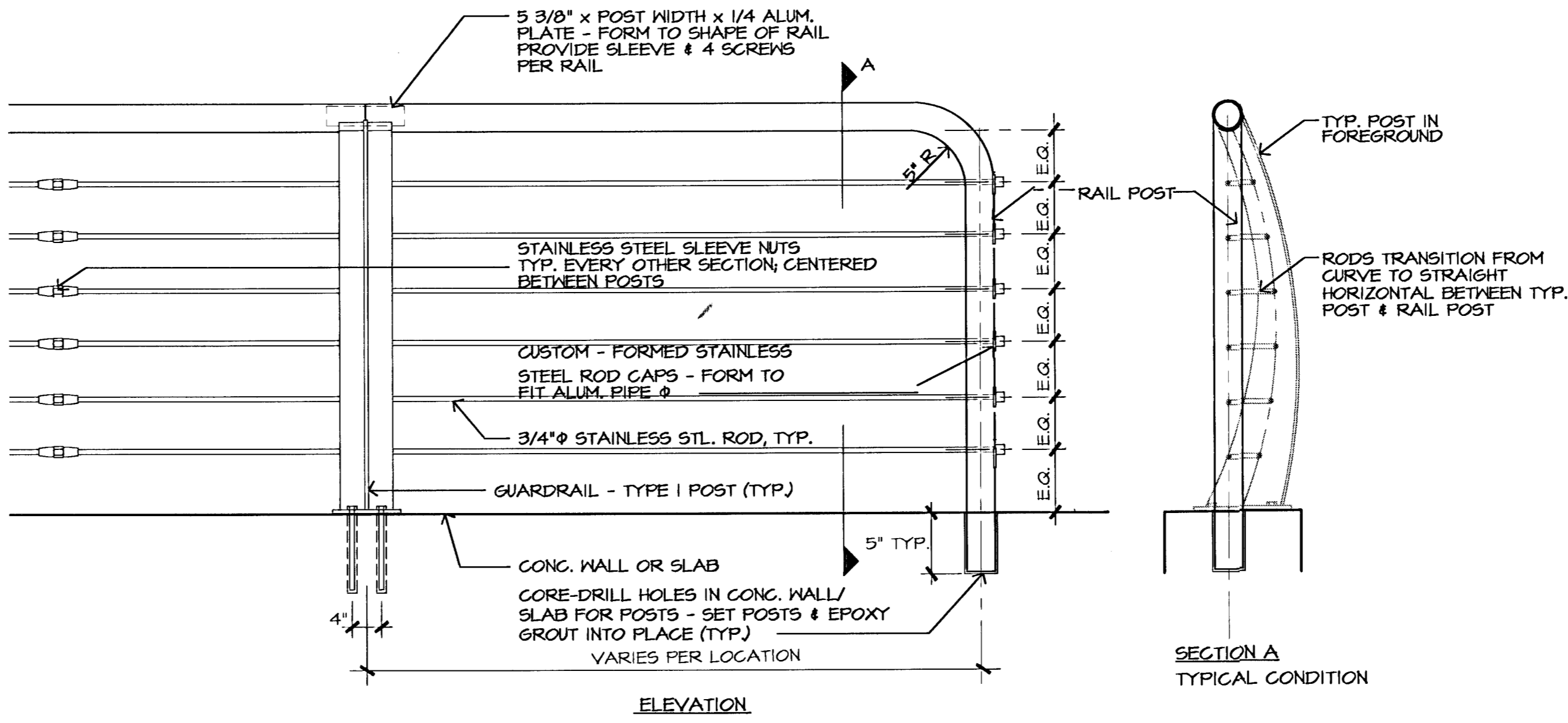


FINISHES
 1. RAILS ONLY TO BE COLOR ANODIZED.
 2. POSTS TO BE CLEAR ANODIZED.
 3. STAINLESS STEEL RODS TO RECEIVE BRIGHT, COLD-ROLLED, UNPOLISHED FINISH, MATCH AISI NO. 2B FINISH.

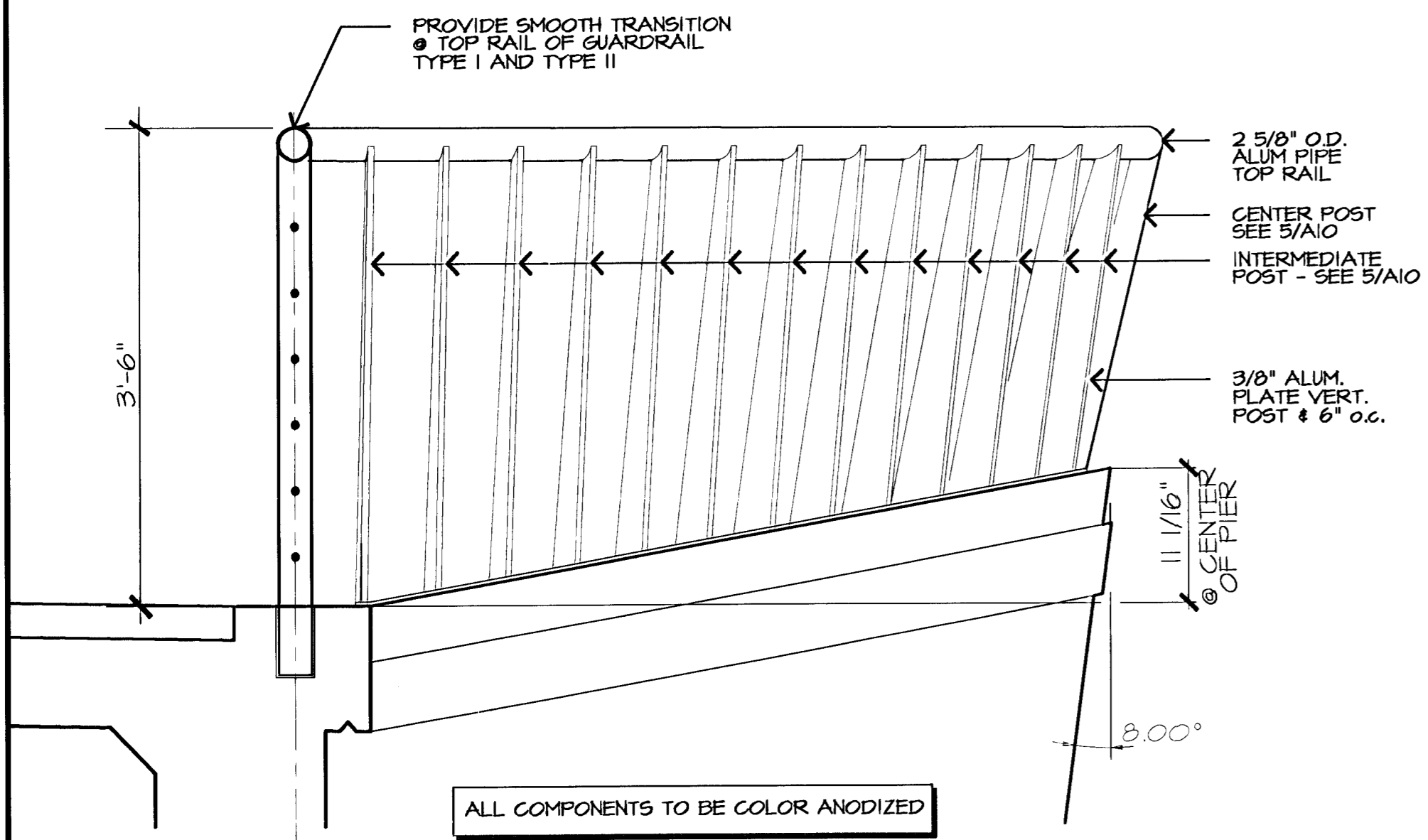


1 BRIDGE GUARDRAIL - TYPE I
 SPECIFIED IN "ORNAMENTAL METALWORK" SECTION OF SPECIFICATIONS

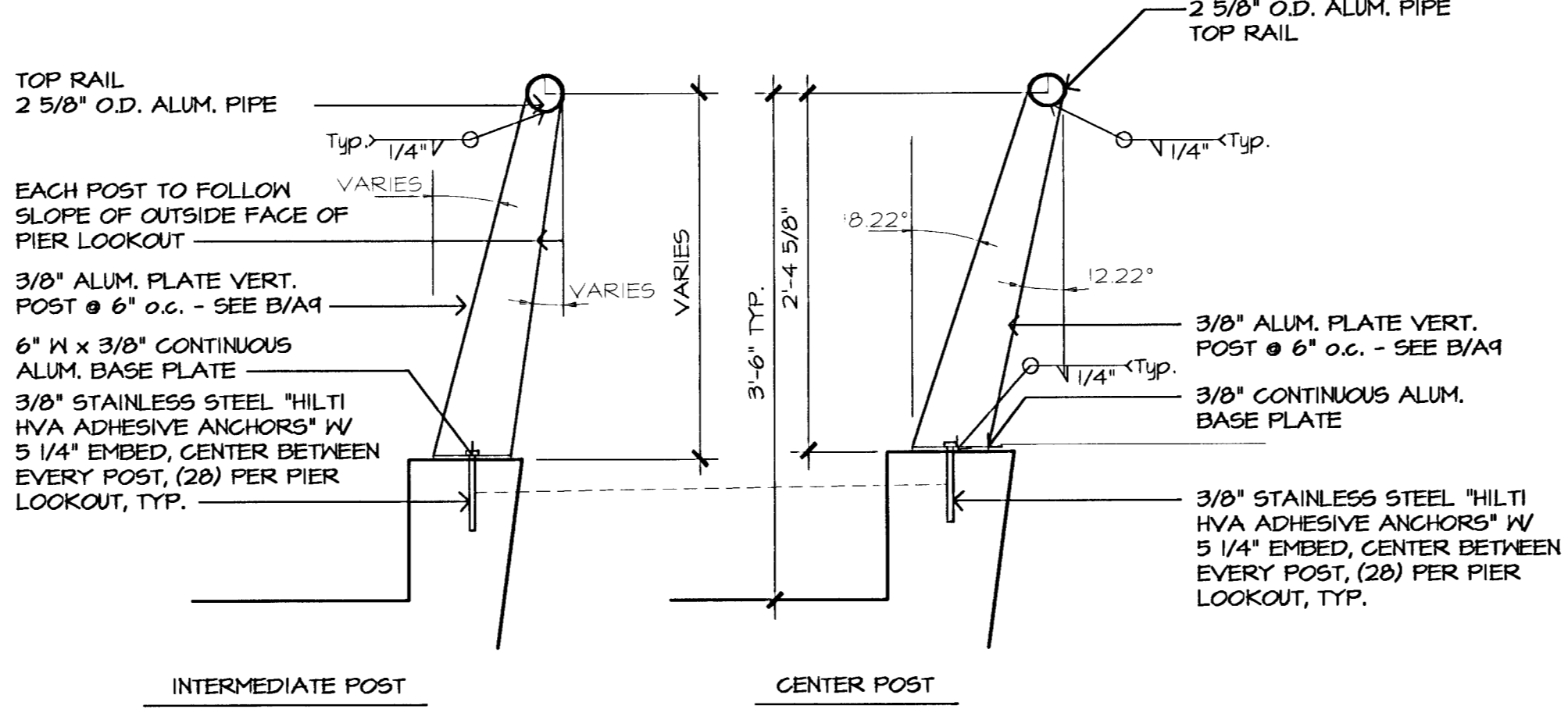


2 BRIDGE GUARDRAIL - TYPE I TERMINATION
 THIS TERMINATION OCCURS AT ALL LOCATIONS WHERE BRIDGE GUARDRAIL - TYPE I ENDS.

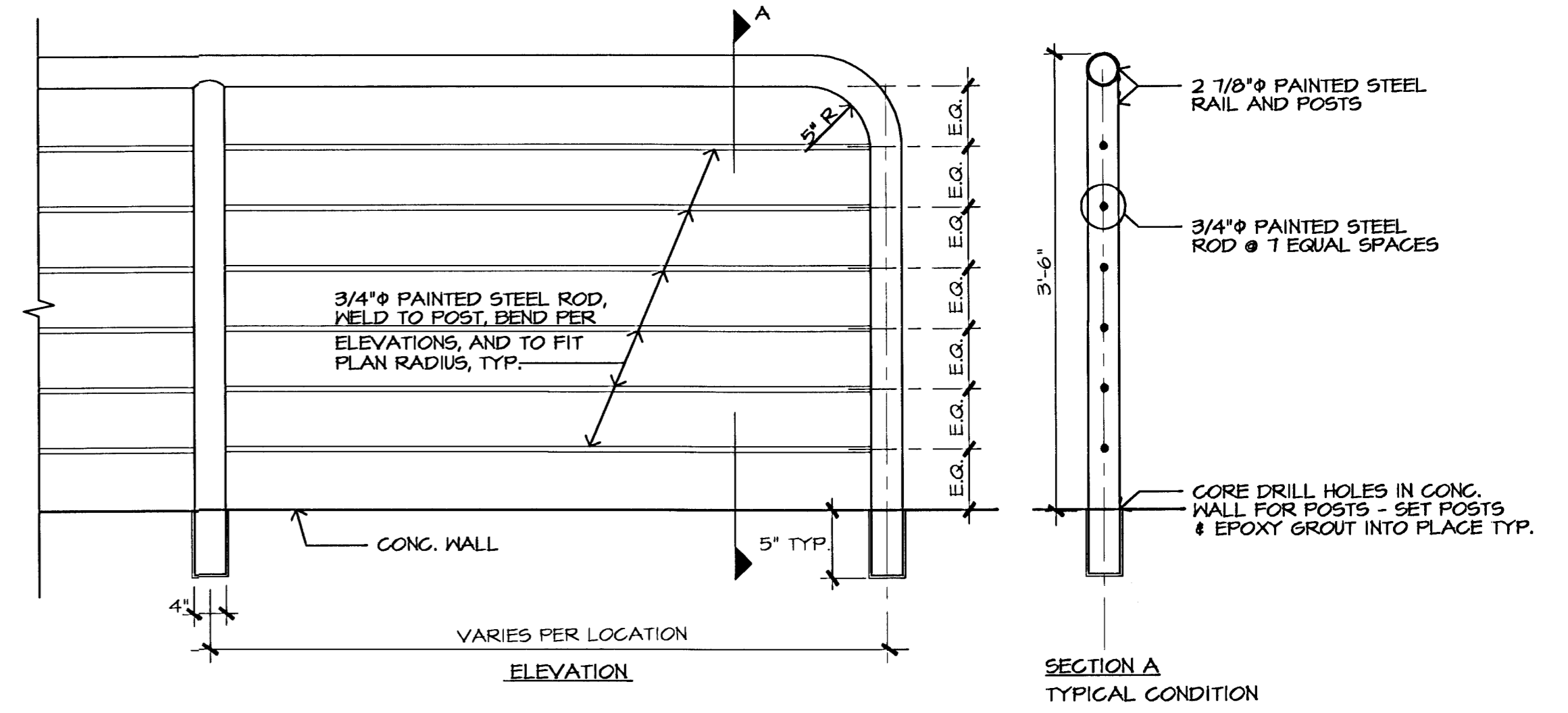
3 NOT USED



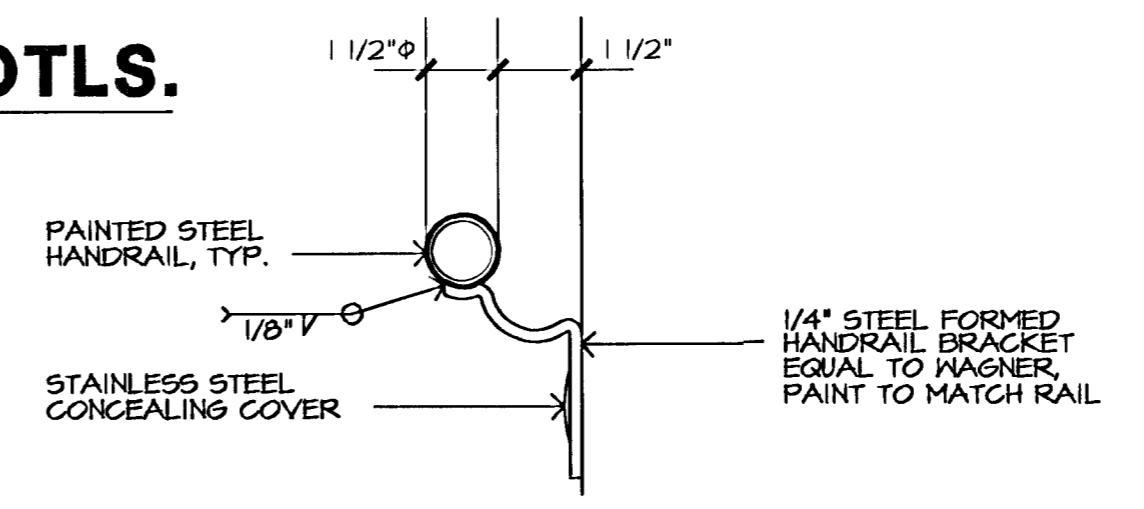
4 GUARDRAIL -TYPE III @ PIER LOOKOUT
 SPECIFIED IN "ORNAMENTAL METALWORK" SECTION OF SPECIFICATIONS



5 GUARDRAIL - TYPE III TYP. POST DTLS.

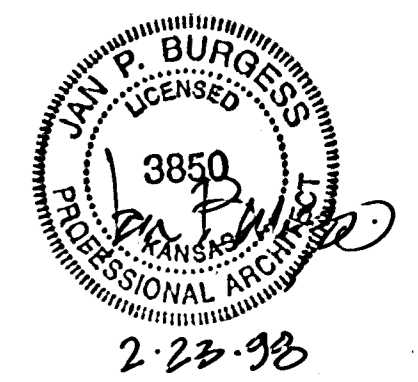


6 GUARDRAIL - TYPE IV @ RETAINING WALLS
 SPECIFIED IN "HANDRAILS & GUARDRAILS" SECTION OF SPECIFICATIONS SEE SHEET A11, A1 FOR HANDRAILS AT STAIRS



7 TYPE V HANDRAIL
 WALL MOUNTED
 SPECIFIED IN "HANDRAILS & GUARDRAILS" SECTION OF SPECIFICATIONS - SEE SHEET A11, A1 FOR HANDRAILS AT STAIRS

GENERAL NOTES
 1. ALL POSTS TO BE SET PLUMB - BRIDGE SLOPE VARIES.
 2. ALL RAILS AND RODS TO FOLLOW SLOPE OF BRIDGE DECK.
 3. FIELD VERIFY ALL SLOPES AND DIMENSIONS.
 4. TRIM ALL ANCHOR BOLTS TO UNIFORM HEIGHT ABOVE NUT.
 5. SEE A11, A1 FOR TYPE VI HANDRAIL & CENTER RAIL.



No.	Revisions	By	Date
1			

GossenLivingston
 Architecture
 4205th Street
 Wichita, KS 67220
 Tel: (316) 265-1387
 Fax: (316) 265-9448

CITY OF WICHITA, KANSAS
 MICHAEL E. LINDEBAK, P.E. - CITY ENGINEER
 LEWIS STREET BRIDGE
 OVER ARKANSAS RIVER
 ARCHITECTURAL DETAILS
 CITY OF WICHITA PROJECT NO. 472-82720
PROFESSIONAL ENGINEERING CONSULTANTS, P.A.
 ENGINEERS
 WICHITA, KANSAS

Designed by LBD Checked by JPB
 Drawn by LBD Date 2/20/98 Job No. 95088-2

F:\900\020\DWG\A10