

FHWA REG NO.	STATE	PROJECT NO.	YEAR	SHEET NO.	SHEETS
7	KANSAS	54-87-TE-0039-01	1997	17	43

THE FOLLOWING ITEMS ARE SUBSIDIARY ITEMS FOR: CONCRETE PAVING UNITS (PAVING BRICK)

SAND-LEVELING LAYER, COMPACTED AGGREGATE BASE, GEOTEXTILE FABRIC, AND TYPE B-MR 90 COMPACTION SHALL MEET REQUIREMENTS OF THE KDOT STANDARD SPECIFICATION. CONCRETE PAVING UNITS (PAVING BRICK) IS SHOWN ON SHEETS 10 THROUGH 16.

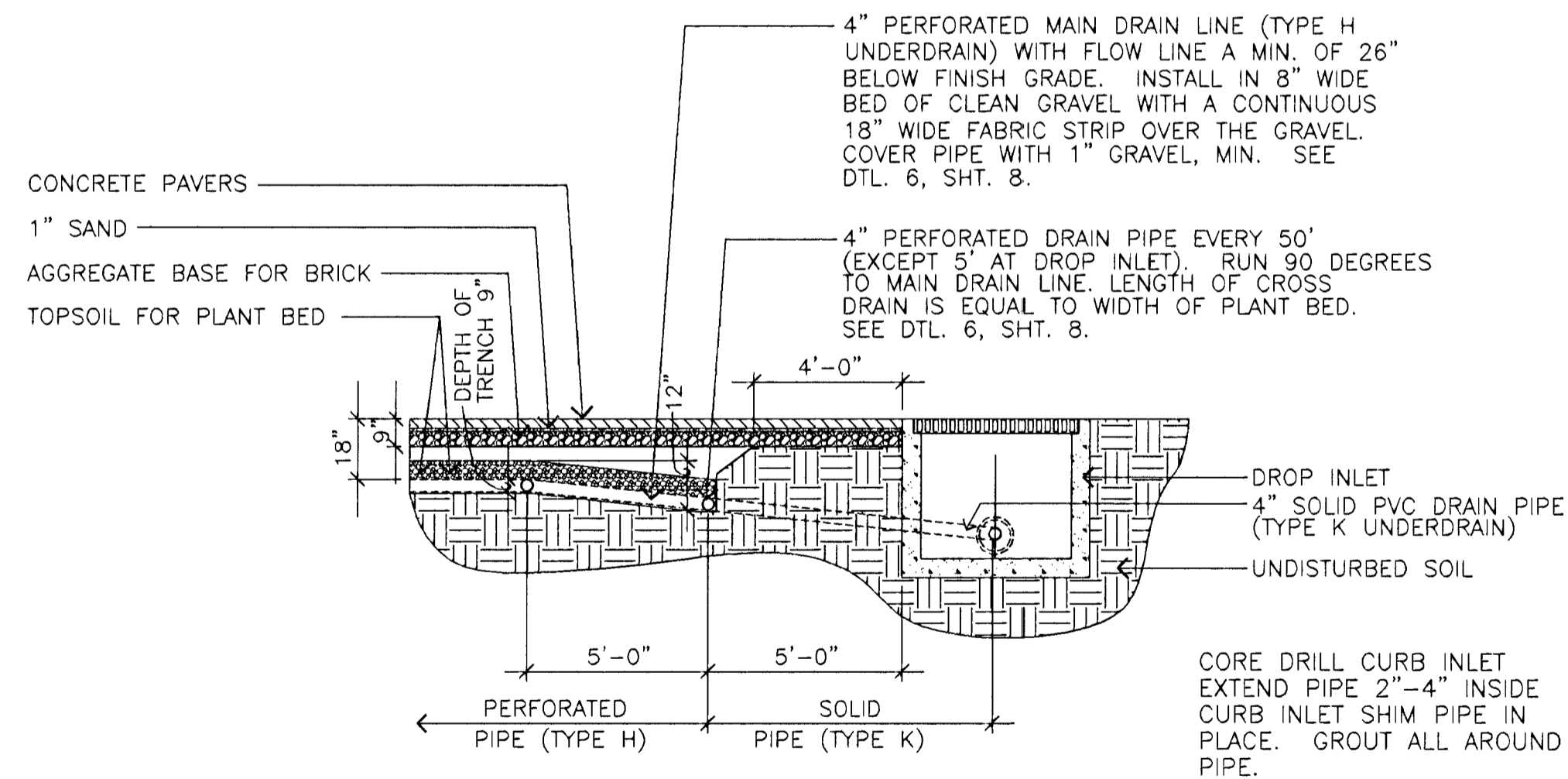
THE FOLLOWING ITEMS ARE SUBSIDIARY ITEMS FOR: UNDERDRAINS (TYPE H):

EXCAVATION UD-1 GRANULAR BACKFILL, GEOTEXTILE FABRIC, AND COMPACTION.

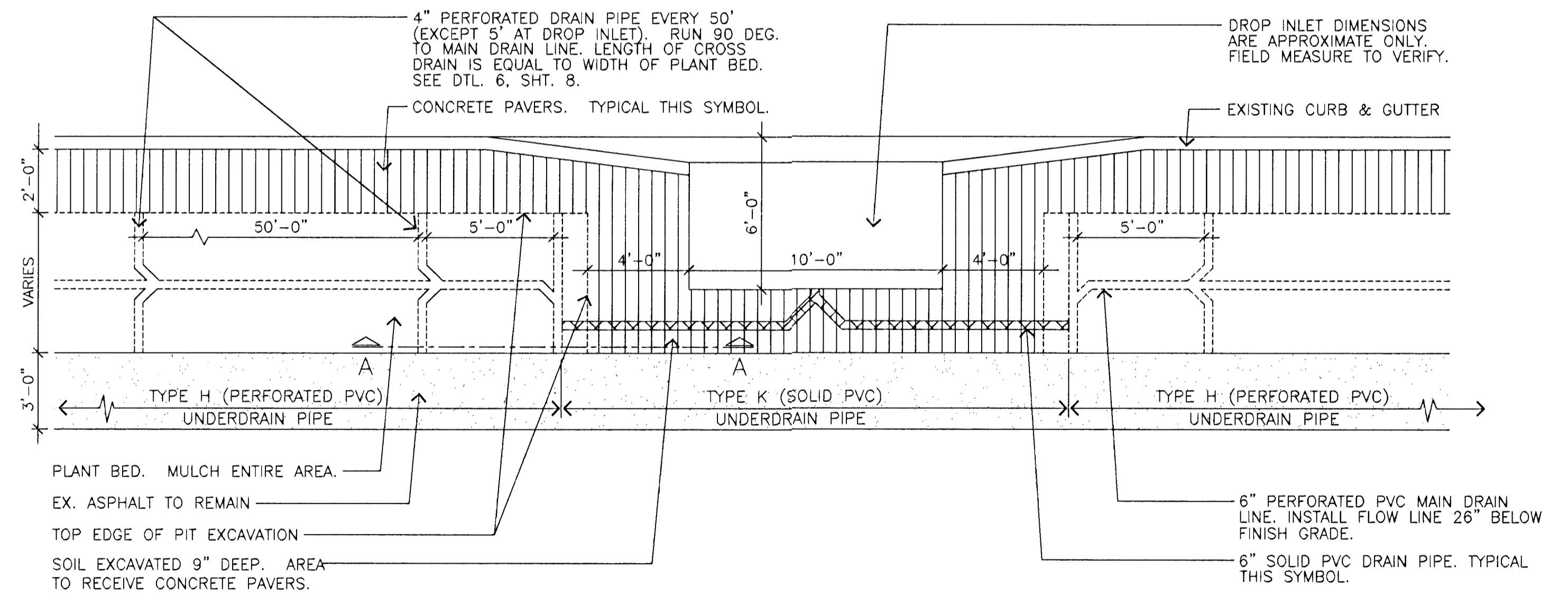
THE FOLLOWING ITEMS ARE SUBSIDIARY ITEMS FOR: UNDERDRAINS (TYPE K):

EXCAVATION, CORING CONCRETE DROP INLET, AND GROUTING PIPE INTO DROP INLET.

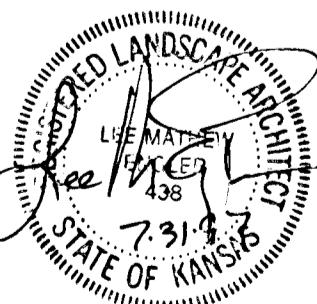
RECAPITULATION OF CONCRETE PAVER UNITS AND DRAIN LINE QUANTITIES	SHEET 10	SHEET 11	SHEET 12	SHEET 13	SHEET 14	SHEET 15	TOTAL QUANTITIES
PAVING BRICK	106.70 SQ. YDS.	754.76 SQ. YDS.	418.04 SQ. YDS.	1897.01 SQ. YDS.	154.71 SQ. YDS.	97.82 SQ. YDS.	3429.04 SQ. YDS.
COMPACTION TYPE B MR-90 (SUBSIDIARY)	17.78 CU. YDS.	125.79 CU. YDS.	69.68 CU. YDS.	316.17 CU. YDS.	51.73 CU. YDS.	16.30 CU. YDS.	597.45 CU. YDS.
PAVING RESTRAINT (SUBSIDIARY)	489'-0" LIN. FT.	505'-10" LIN. FT.	1239'-8" LIN. FT.	1077'-0" LIN. FT.	1400'-0" LIN. FT.	429'-0" LIN. FT.	5140'-6" LIN. FT.
UNDERDRAIN (4") (TYPE H) (PERFORATED)	0 LIN. FT.	0 LIN. FT.	1386'-6" LIN. FT.	1576'-0" LIN. FT.	1936'-0" LIN. FT.	689'-0" LIN. FT.	5587'-6" LIN. FT.
EXCAVATION & GRANULAR BACKFILL SUBSIDIARY	0	0	0	56'-0"	0	0	56'-0"
UNDERDRAIN (4") (TYPE K) (SOLID)	0 LIN. FT.	0 LIN. FT.	0 LIN. FT.	0 LIN. FT.	0 LIN. FT.	0 LIN. FT.	0 LIN. FT.
CATCH BASIN CORE DRILLING & GROUTING SUBSIDIARY	0 UNITS	0 UNITS	0 UNITS	4 UNITS	0 UNITS	0 UNITS	4 UNITS



1 DRAIN TILE AT CURB INLET - SECTION A-A
NEAR BASE OF RAMPS AT KELLOGG AND WEST STREETS
1/4" = 1'-0"



2 TYPICAL DROP INLET W/ DRAIN TILE - PLAN
NEAR BASE OF RAMPS AT KELLOGG AND WEST STREETS
1/4" = 1'-0"



KANSAS DEPARTMENT OF TRANSPORTATION
KELLOGG AND WEST STREET
DRAIN TILE DETAILS
SUMMARY OF QUANTITIES
PROJECT NO. #701221

Wilson Darnell Mann
architecture site planning interiors
Wichita, Kansas

DESIGNED BY: WDM, PA CHECKED BY: LMB
DRAWN BY: BEK DATE: 7/31/97 SHEET 17 OF 43