

GENERAL NOTES – LANDSCAPE PLANTING

FHWA REG. NO.	STATE	PROJECT NO.	YEAR	SHEET NO.	SHEETS
7	KANSAS	54-87-TE-0039-01	1997	18	43

IT WILL BE THE RESPONSIBILITY OF THE CONTRACTOR TO OBSERVE ALL CITY, COUNTY AND STATE CODES AND REGULATIONS THAT APPLY TO THIS JOB.

UNDERGROUND FACILITIES, STRUCTURES AND UTILITIES HAVE BEEN DRAWN FROM AVAILABLE RECORDS. THEREFORE, THE RELATIONSHIP BETWEEN PROPOSED WORK AND EXISTING FACILITIES, STRUCTURES AND UTILITIES MUST BE CONSIDERED APPROXIMATE AND IT IS THE CONTRACTOR'S RESPONSIBILITY TO DETERMINE THEIR EXACT LOCATION AND THE EXISTENCE OF ANY NOT SHOWN BY CONTACTING KANSAS ONE-CALL CENTER AT (316) 687-2470 A MINIMUM OF 48 HOURS PRIOR TO THE COMMENCEMENT OF DIGGING OPERATIONS.

UTILITY OWNERS:

CITY OF WICHITA WATER AND SEWER DEPARTMENT (316) 268-4908
 MULTIMEDIA CABLEVISION (316) 262-0661
 SOUTHWEST BELL TELEPHONE 800-734-7630
 WILLIAMS NATURAL GAS PIPELINE (918) 588-4200
 KANSAS GAS AND ELECTRIC (316) 832-3169 OR 832-3180
 OMNITRAX (RAILROAD) (303) 393-0033
 KANSAS DEPARTMENT OF TRANSPORTATION (913) 296-3549

EXISTING CONDITIONS SHALL BE VERIFIED BY GENERAL CONTRACTOR. DISCREPANCIES ARE TO BE REPORTED TO LANDSCAPE ARCHITECT PRIOR TO CONSTRUCTION.

THE CONTRACTOR SHALL RESTORE TO THE ORIGINAL CONDITION, PROPERTY DISTURBED BY HIS OPERATIONS.

PROTECT AND SAVE EXISTING PLANT MATERIAL DURING CONSTRUCTION. DO NOT REMOVE ANY TREES.

ALL ASPHALT, CONCRETE, UNUSEABLE SUB-BASE, AND SOIL THAT IS BEING REMOVED SHALL BE HAULED FROM SITE AT TIME OF DEMOLITION, AND DISPOSED OF LEGALLY.

THE CONTRACTOR WILL BE RESPONSIBLE TO MAINTAIN STRICT COMPLIANCE WITH MINIMUM WIDTHS OF EXISTING ASPHALT THAT IS TO REMAIN. ALONG THE JERSEY BARRIER A 2'-6" STRIP IS TO REMAIN. ALONG THE BRIDGE WALLS A 3'-0" STRIP IS TO REMAIN. THE CONTRACTOR WILL BE RESPONSIBLE FOR THE REPAIR OF ANY ASPHALT THAT IS DAMAGED DURING THE DEMOLITION OR CONSTRUCTION.

DAMAGE TO EXISTING CONCRETE CURB AND GUTTER, SIDEWALKS, EXISTING ASPHALT PAVING AND EXISTING SIGNAGE TO BE REMOVED AND REPLACED BY CONTRACTOR.

ALL EXISTING TRAFFIC SIGNS ARE TO REMAIN DURING THE PROGRESS OF CONSTRUCTION. CONTRACTOR IS TO PROTECT THESE SIGNS FROM DAMAGE.

EXISTING TRAFFIC SIGNALS ARE TO REMAIN AND STAY OPERATIONAL DURING THE PROGRESS OF CONSTRUCTION.

PROTECT ALL SUPPORT POST FOOTINGS, SIGN POSTS, FIRE HYDRANTS, UTILITIES AND SIDEWALKS DURING EXCAVATION. ANY DAMAGE TO EXISTING FACILITIES IS THE RESPONSIBILITY OF THE CONTRACTOR.

SEE PAVING PLANS AND DETAILS FOR LOCATION AND PATTERN OF CONCRETE PAVING UNITS AND FOR LAYOUT OF SUBSURFACE DRAINAGE FOR PLANTING BEDS ADJACENT TO BRIDGE WALL.

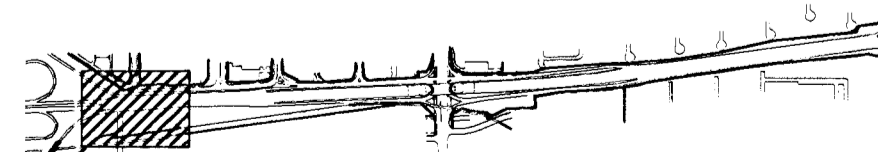
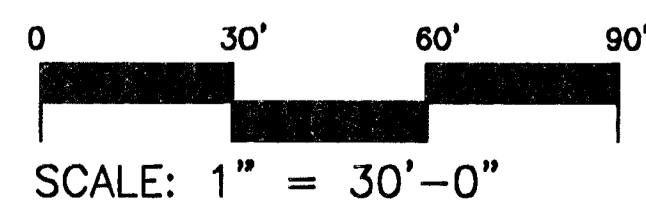
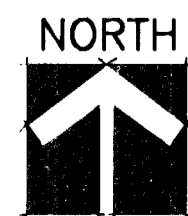
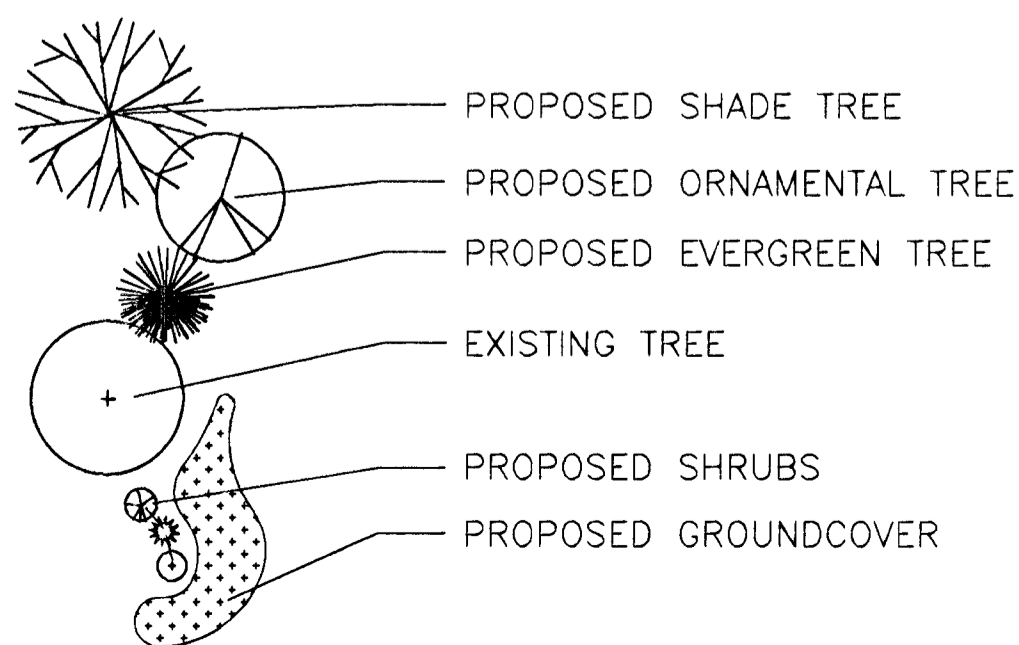
SEE DEMOLITION PLANS AND DETAILS FOR EXISTING SOIL AND ASPHALT EXCAVATION. ALSO LOCATED ON THE DEMOLITION PLANS IS THE NEW TOPSOIL DEPTH REQUIREMENTS AND LOCATIONS.

THE CONTRACTOR SHALL BE RESPONSIBLE FOR COORDINATING IRRIGATION TRENCHING AND INSTALLATION WITH DRAIN TILE TRENCHING AND INSTALLATION, AND WITH PLANT MATERIAL LOCATIONS.

GENERAL CONTRACTOR SHALL BE RESPONSIBLE FOR ALL PERMITS, FEES, INSPECTIONS, AND OTHER SUBMITTALS TO APPROPRIATE REGULATORY AGENCY REQUIRED DURING THE DURATION OF WORK.

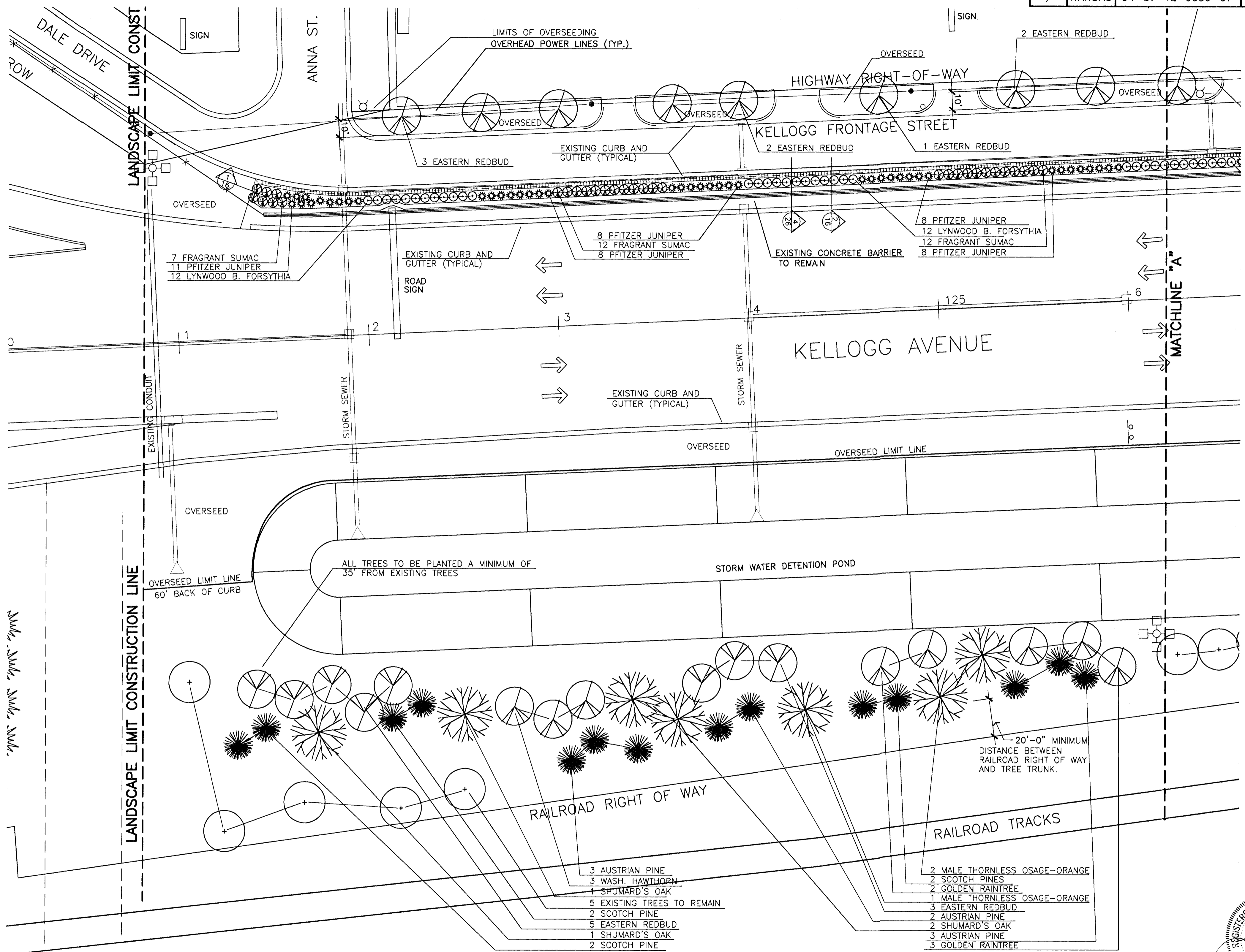
GENERAL CONTRACTOR SHALL BE RESPONSIBLE FOR REQUIRED UTILITY COMPANY SUBMITTALS, CONNECTION FEES, AND INSPECTIONS.

LEGEND



KEY PLAN

NOTE:
 SEE SHT. 26 FOR PLANTING LEGEND,
 NOTES AND DETAILS.

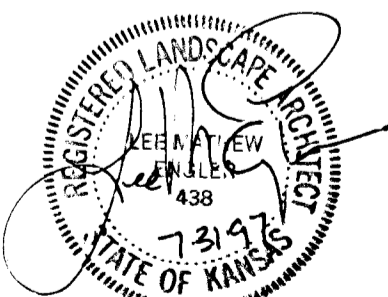


BID ITEM (AS PER SHEET)

QTY.	BOTANICAL NAME	COMMON NAME
3	MACLURA POMIFERA VAR. INERMIS MALE	MALE THORNLESS OSAGE ORANGE
4	QUERCUS SHUMARDII	SHUMARD'S OAK
16	CERCIS CANADENSIS	EASTERN REDBUD
3	CRATAEGUS PHAENOPYRUM	WASHINGTON HAWTHORN
5	KOELREUTERIA PANICULATA	GOLDEN RAINTREE
8	PINUS NIGRA	AUSTRIAN PINE
6	PINUS SYLVESTRIS	SCOTCH PINE
43	JUNIPERUS CHINENSIS 'PFITZERANA'	PFITZER JUNIPER
24	FORSYTHIA X INTERMEDIA 'LYNWOOD'	LYNWOOD BORDER FORSYTHIA
31	RHUS AROMATICA	FRAGRANT SUMAC
	SEEDING - TURF TYPE TALL FESCUE (OVERSEEDING)	.40 ACRES
	SEEDING - TURF TYPE TALL FESCUE (BARE SOIL)	0 ACRES

KANSAS DEPARTMENT OF TRANSPORTATION
 KELLOGG AND WEST STREET
 STATION 119+00 TO 126+00
 PLANTING PLAN
 PROJECT NO. #101221

Wilson Darnell Mann
 architecture site planning interiors
 Wichita, Kansas



DESIGNED BY: WDM, PA	CHECKED BY: LME
DRAWN BY: SKW	DATE: 7/31/97 SHEET 18 OF 43

2-17-97
 E:\94082 LP-1
 E:\94082 MAINBASE E:\94082 PLANTS E:\94082 PAVEDS