

FHWA REG. NO.	STATE	PROJECT NO.	YEAR	SHEET NO.	SHEETS
7	KANSAS	54-87-TE-0039-01	1997	27	43

GENERAL NOTES-IRRIGATION PLANS

IT WILL BE THE RESPONSIBILITY OF THE CONTRACTOR TO OBSERVE ALL CITY, COUNTY AND STATE CODES AND REGULATIONS THAT APPLY TO THIS JOB.

UNDERGROUND FACILITIES, STRUCTURES AND UTILITIES HAVE BEEN DRAWN FROM AVAILABLE RECORDS. THEREFORE, THE RELATIONSHIP BETWEEN PROPOSED WORK AND EXISTING FACILITIES, STRUCTURES AND UTILITIES MUST BE CONSIDERED APPROXIMATE AND IT IS THE CONTRACTOR'S RESPONSIBILITY TO DETERMINE THEIR EXACT LOCATION AND THE EXISTENCE OF ANY NOT SHOWN BY CONTACTING KANSAS ONE-CALL CENTER AT (316) 687-2470 A MINIMUM OF 48 HOURS PRIOR TO THE COMMENCEMENT OF DIGGING OPERATIONS.

UTILITY OWNERS:

CITY OF WICHITA WATER AND SEWER DEPARTMENT (316) 268-4908
 MULTIMEDIA CABLEVISION (316) 262-0661
 SOUTHWEST BELL TELEPHONE 800-734-7630
 WILLIAMS NATURAL GAS PIPELINE (918) 588-4200
 KANSAS GAS AND ELECTRIC (316) 832-3169 OR 832-3180

EXISTING CONDITIONS SHALL BE VERIFIED BY GENERAL CONTRACTOR. DISCREPANCIES ARE TO BE REPORTED TO LANDSCAPE ARCHITECT PRIOR TO CONSTRUCTION.

THE CONTRACTOR SHALL RESTORE TO THE ORIGINAL CONDITION, ADJACENT (OFF-SITE) PROPERTY DISTURBED BY HIS OPERATIONS.

PROTECT AND SAVE EXISTING PLANT MATERIAL DURING CONSTRUCTION. DO NOT REMOVE ANY TREES.

THE CONTRACTOR SHALL PROTECT ALL EXISTING TREES THAT FALL WITHIN 30'-0" OF CONSTRUCTION WITH PROTECTIVE BARRIER FENCE, PLACED AT DRIP LINE OF THE TREE.

DAMAGE TO EXISTING CONCRETE CURB AND GUTTER, EXISTING ASPHALT AND EXISTING SIGNAGE TO BE REMOVED AND REPLACED BY CONTRACTOR.

ALL EXISTING TRAFFIC SIGNS ARE TO REMAIN DURING THE PROGRESS OF CONSTRUCTION. CONTRACTOR IS TO PROTECT THESE SIGNS FROM DAMAGE.

EXISTING TRAFFIC SIGNALS ARE TO REMAIN AND STAY OPERATIONAL DURING THE PROGRESS OF CONSTRUCTION.

PROTECT ALL SUPPORT POST FOOTINGS, SIGN POSTS, FIRE HYDRANTS, UTILITIES AND SIDEWALKS DURING EXCAVATION. ANY DAMAGE TO EXISTING FACILITIES IS THE RESPONSIBILITY OF THE CONTRACTOR.

THE CONTRACTOR SHALL BE RESPONSIBLE FOR COORDINATING IRRIGATION TRENCHING AND INSTALLATION WITH DRAIN TILE TRENCHING AND INSTALLATION, AND WITH PLANT MATERIAL.

GENERAL CONTRACTOR SHALL BE RESPONSIBLE FOR ALL PERMITS, FEES, INSPECTIONS, AND OTHER SUBMITTALS TO APPROPRIATE REGULATORY AGENCY REQUIRED DURING THE DURATION OF WORK.

ELECTRIC CONNECTIONS TO PUMP EQUIPMENT AND CONTROLLERS ARE SUBSIDIARY TO EQUIPMENT INSTALLATION. TELEPHONE CONNECTION TO MRS5000i CONTROLLERS ARE SUBSIDIARY TO CONTROLLER INSTALLATION.

GENERAL CONTRACTOR SHALL BE RESPONSIBLE FOR REQUIRED UTILITY COMPANY SUBMITTALS, CONNECTION FEES, AND INSPECTIONS.

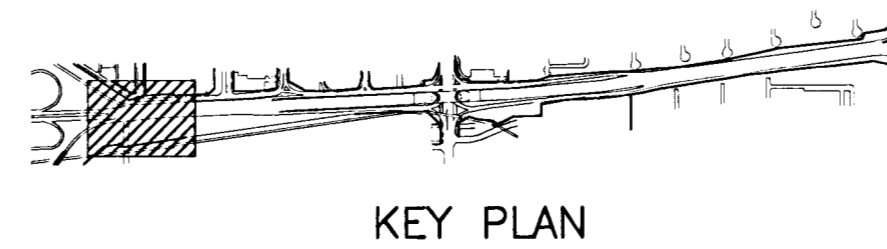
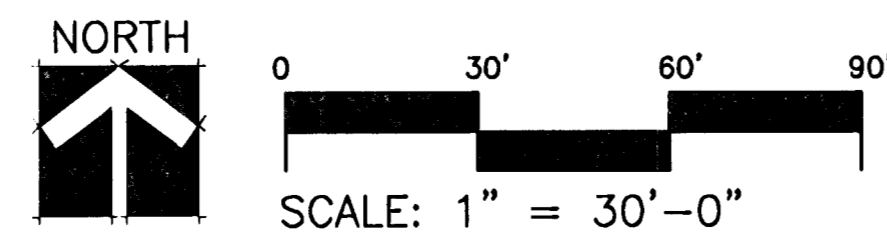
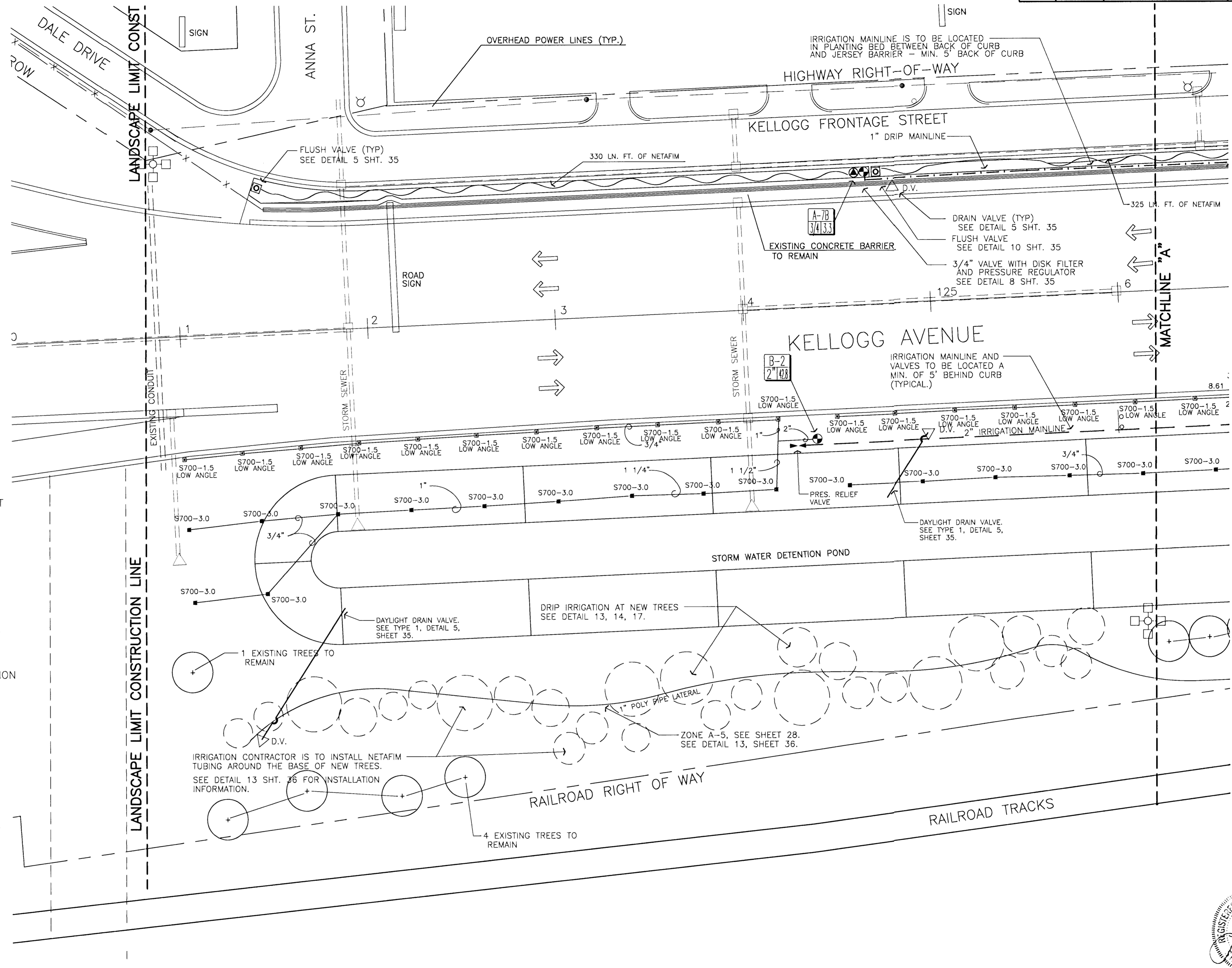
NOTE:

SEE SHEETS 35 AND 36 FOR IRRIGATION DETAILS.

SEE SHEET 37 FOR IRRIGATION NOTES AND LEGEND.

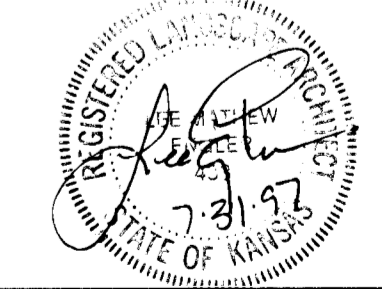
SEE SHEETS 8, 16 AND 17 FOR CROSS SECTIONS OF PLANT BEDS.

SEE SHEETS 12 THRU 15 FOR DRAIN TILE LOCATIONS.



UTILITY OWNERS:
 CITY OF WICHITA WATER AND SEWER DEPARTMENT (316) 268-4908
 MULTIMEDIA CABLEVISION (316) 262-0661
 SOUTHWEST BELL TELEPHONE 800-734-7630
 WILLIAMS NATURAL GAS PIPELINE (918) 588-4200
 KANSAS GAS AND ELECTRIC (316) 832-3169 OR 832-3180

CONTRACTOR TO VERIFY LOCATIONS OF ALL UTILITIES PRIOR TO DIGGING.



KANSAS DEPARTMENT OF TRANSPORTATION
 KELLOGG AND WEST STREET
 STATION 119+00 TO 126+00
 IRRIGATION PLAN
 PROJECT NO. #101227

Wilson Darnell Mann
 architecture site planning interiors
 Wichita, Kansas

DESIGNED BY: WDM, PA
 CHECKED BY: LMB
 DRAWN BY: SKW
 DATE: 7/31/97 SHEET 27 OF 43

2-17-97 E:\94082\ALI-1 E:\94082\MAINBASE E:\94082\IRRI