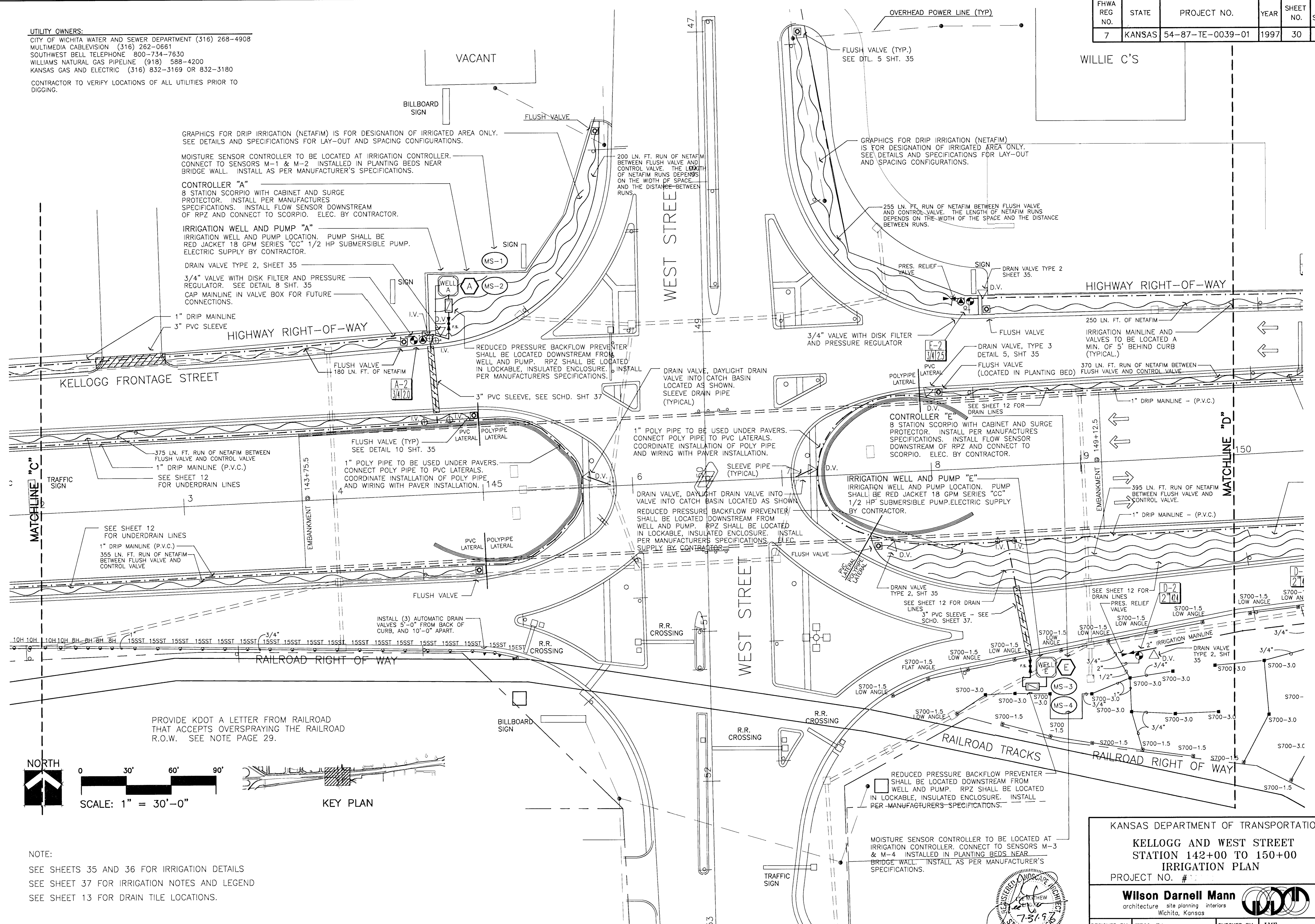


FHWA REG. NO.	STATE	PROJECT NO.	YEAR	SHEET NO.	SHEETS
7	KANSAS	54-87-TE-0039-01	1997	30	43

UTILITY OWNERS:
 CITY OF WICHITA WATER AND SEWER DEPARTMENT (316) 268-4908
 MULTIMEDIA CABLEVISION (316) 262-0661
 SOUTHWEST BELL TELEPHONE 800-734-7630
 WILLIAMS NATURAL GAS PIPELINE (918) 588-4200
 KANSAS GAS AND ELECTRIC (316) 832-3169 OR 832-3180
 CONTRACTOR TO VERIFY LOCATIONS OF ALL UTILITIES PRIOR TO DIGGING.

WILLIE C'S



GRAPHICS FOR DRIP IRRIGATION (NETAFIM) IS FOR DESIGNATION OF IRRIGATED AREA ONLY. SEE DETAILS AND SPECIFICATIONS FOR LAY-OUT AND SPACING CONFIGURATIONS.

MOISTURE SENSOR CONTROLLER TO BE LOCATED AT IRRIGATION CONTROLLER. CONNECT TO SENSORS M-1 & M-2 INSTALLED IN PLANTING BEDS NEAR BRIDGE WALL. INSTALL AS PER MANUFACTURER'S SPECIFICATIONS.

CONTROLLER "A"
 8 STATION SCORPIO WITH CABINET AND SURGE PROTECTOR. INSTALL PER MANUFACTURER'S SPECIFICATIONS. INSTALL FLOW SENSOR DOWNSTREAM OF RPZ AND CONNECT TO SCORPIO. ELEC. BY CONTRACTOR.

IRRIGATION WELL AND PUMP "A"
 IRRIGATION WELL AND PUMP LOCATION. PUMP SHALL BE RED JACKET 18 GPM SERIES "CC" 1/2 HP SUBMERSIBLE PUMP. ELECTRIC SUPPLY BY CONTRACTOR.

DRAIN VALVE TYPE 2, SHEET 35

3/4" VALVE WITH DISK FILTER AND PRESSURE REGULATOR. SEE DETAIL 8 SHT. 35

CAP MAINLINE IN VALVE BOX FOR FUTURE CONNECTIONS.

1" DRIP MAINLINE
 3" PVC SLEEVE

FLUSH VALVE
 180 LN. FT. OF NETAFIM

REDUCED PRESSURE BACKFLOW PREVENTER SHALL BE LOCATED DOWNSTREAM FROM WELL AND PUMP. RPZ SHALL BE LOCATED IN LOCKABLE, INSULATED ENCLOSURE. INSTALL PER MANUFACTURER'S SPECIFICATIONS.

3" PVC SLEEVE, SEE SCHD. SHT 37

FLUSH VALVE (TYP)
 SEE DETAIL 10 SHT. 35

1" POLY PIPE TO BE USED UNDER PAVERS. CONNECT POLY PIPE TO PVC LATERALS. COORDINATE INSTALLATION OF POLY PIPE AND WIRING WITH PAVEMENT INSTALLATION.

DRAIN VALVE, DAYLIGHT DRAIN VALVE INTO CATCH BASIN LOCATED AS SHOWN

REDUCED PRESSURE BACKFLOW PREVENTER SHALL BE LOCATED DOWNSTREAM FROM WELL AND PUMP. RPZ SHALL BE LOCATED IN LOCKABLE, INSULATED ENCLOSURE. INSTALL PER MANUFACTURER'S SPECIFICATIONS. ELEC. SUPPLY BY CONTRACTOR.

FLUSH VALVE

INSTALL (3) AUTOMATIC DRAIN VALVES 5'-0" FROM BACK OF CURB, AND 10'-0" APART.

3/4" DRIP MAINLINE - (P.V.C.)

355 LN. FT. RUN OF NETAFIM BETWEEN FLUSH VALVE AND CONTROL VALVE

SEE SHEET 12 FOR UNDERDRAIN LINES

1" DRIP MAINLINE (P.V.C.)

375 LN. FT. RUN OF NETAFIM BETWEEN FLUSH VALVE AND CONTROL VALVE

SEE SHEET 12 FOR UNDERDRAIN LINES

TRAFFIC SIGN

EMBANKMENT @ 143+75.5

3" PVC SLEEVE - SEE SCHD. SHEET 37

PVC LATERAL

POLYPIPE LATERAL

FLUSH VALVE

IRRIGATION WELL AND PUMP "E"
 IRRIGATION WELL AND PUMP LOCATION. PUMP SHALL BE RED JACKET 18 GPM SERIES "CC" 1/2 HP SUBMERSIBLE PUMP. ELECTRIC SUPPLY BY CONTRACTOR.

CONTROLLER "E"
 8 STATION SCORPIO WITH CABINET AND SURGE PROTECTOR. INSTALL PER MANUFACTURER'S SPECIFICATIONS. INSTALL FLOW SENSOR DOWNSTREAM OF RPZ AND CONNECT TO SCORPIO. ELEC. BY CONTRACTOR.

3/4" VALVE WITH DISK FILTER AND PRESSURE REGULATOR

FLUSH VALVE
 250 LN. FT. OF NETAFIM

GRAPHICS FOR DRIP IRRIGATION (NETAFIM) IS FOR DESIGNATION OF IRRIGATED AREA ONLY. SEE DETAILS AND SPECIFICATIONS FOR LAY-OUT AND SPACING CONFIGURATIONS.

200 LN. FT. RUN OF NETAFIM BETWEEN FLUSH VALVE AND CONTROL VALVE. THE LENGTH OF NETAFIM RUNS DEPENDS ON THE WIDTH OF SPACE AND THE DISTANCE BETWEEN RUNS.

255 LN. FT. RUN OF NETAFIM BETWEEN FLUSH VALVE AND CONTROL VALVE. THE LENGTH OF NETAFIM RUNS DEPENDS ON THE WIDTH OF SPACE AND THE DISTANCE BETWEEN RUNS.

370 LN. FT. RUN OF NETAFIM BETWEEN FLUSH VALVE AND CONTROL VALVE

395 LN. FT. RUN OF NETAFIM BETWEEN FLUSH VALVE AND CONTROL VALVE

1" DRIP MAINLINE - (P.V.C.)

1" DRIP MAINLINE - (P.V.C.)

1" DRIP MAINLINE - (P.V.C.)

1" DRIP MAINLINE - (P.V.C.)

1" DRIP MAINLINE - (P.V.C.)

1" DRIP MAINLINE - (P.V.C.)

1" DRIP MAINLINE - (P.V.C.)

1" DRIP MAINLINE - (P.V.C.)

1" DRIP MAINLINE - (P.V.C.)

1" DRIP MAINLINE - (P.V.C.)

1" DRIP MAINLINE - (P.V.C.)

1" DRIP MAINLINE - (P.V.C.)

1" DRIP MAINLINE - (P.V.C.)

1" DRIP MAINLINE - (P.V.C.)

1" DRIP MAINLINE - (P.V.C.)

1" DRIP MAINLINE - (P.V.C.)

1" DRIP MAINLINE - (P.V.C.)

1" DRIP MAINLINE - (P.V.C.)

1" DRIP MAINLINE - (P.V.C.)

1" DRIP MAINLINE - (P.V.C.)

1" DRIP MAINLINE - (P.V.C.)

1" DRIP MAINLINE - (P.V.C.)

1" DRIP MAINLINE - (P.V.C.)

1" DRIP MAINLINE - (P.V.C.)

1" DRIP MAINLINE - (P.V.C.)

1" DRIP MAINLINE - (P.V.C.)

1" DRIP MAINLINE - (P.V.C.)

1" DRIP MAINLINE - (P.V.C.)

1" DRIP MAINLINE - (P.V.C.)

1" DRIP MAINLINE - (P.V.C.)

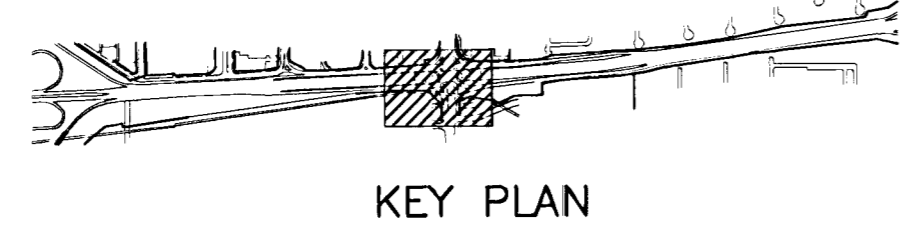
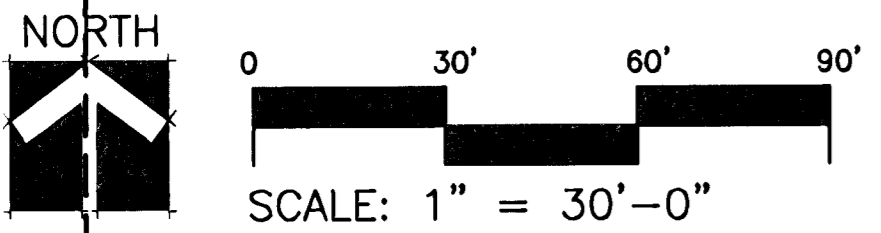
1" DRIP MAINLINE - (P.V.C.)

1" DRIP MAINLINE - (P.V.C.)

1" DRIP MAINLINE - (P.V.C.)

1" DRIP MAINLINE - (P.V.C.)

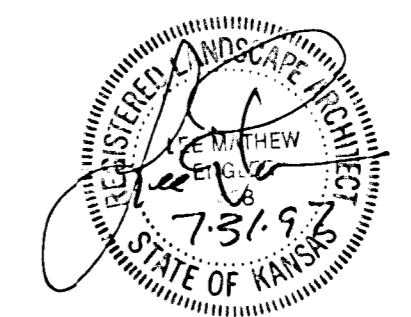
1" DRIP MAINLINE - (P.V.C.)



NOTE:
 SEE SHEETS 35 AND 36 FOR IRRIGATION DETAILS
 SEE SHEET 37 FOR IRRIGATION NOTES AND LEGEND
 SEE SHEET 13 FOR DRAIN TILE LOCATIONS.

REDUCED PRESSURE BACKFLOW PREVENTER SHALL BE LOCATED DOWNSTREAM FROM WELL AND PUMP. RPZ SHALL BE LOCATED IN LOCKABLE, INSULATED ENCLOSURE. INSTALL PER MANUFACTURER'S SPECIFICATIONS.

MOISTURE SENSOR CONTROLLER TO BE LOCATED AT IRRIGATION CONTROLLER. CONNECT TO SENSORS M-3 & M-4 INSTALLED IN PLANTING BEDS NEAR BRIDGE WALL. INSTALL AS PER MANUFACTURER'S SPECIFICATIONS.



KANSAS DEPARTMENT OF TRANSPORTATION
 KELLOGG AND WEST STREET
 STATION 142+00 TO 150+00
 IRRIGATION PLAN
 PROJECT NO. #

Wilson Darnell Mann
 architecture site planning interiors
 Wichita, Kansas

DESIGNED BY: WDM, PA
 CHECKED BY: LME
 DRAWN BY: SKW
 DATE: 7/31/97
 SHEET 30 OF 43

8-24-95
 E:\94082\LI-4
 E:\94082\MAINBASE E:\94082\IRRIIG