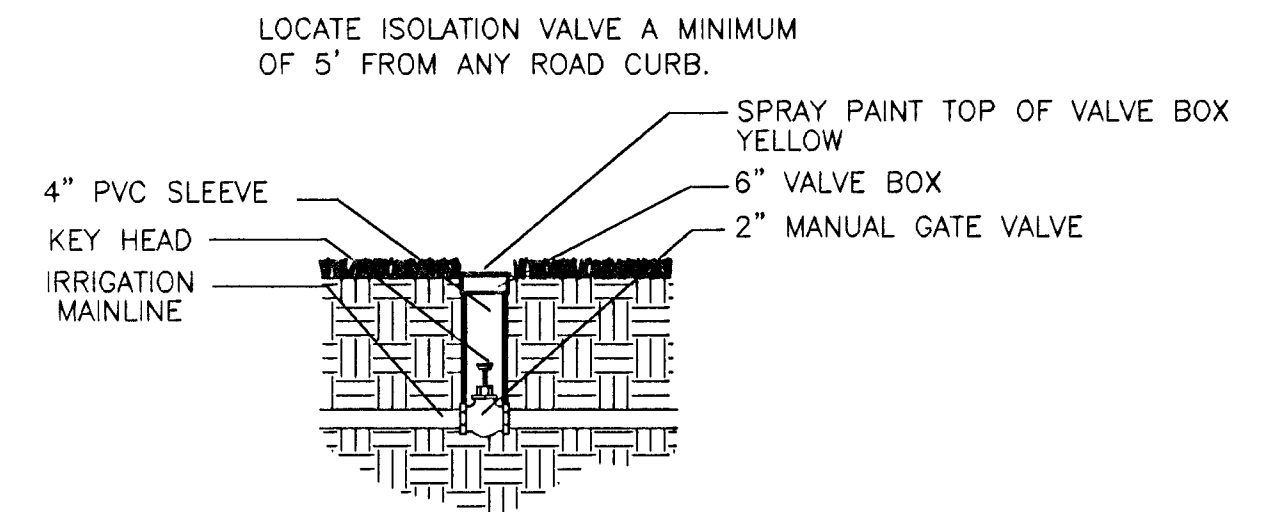
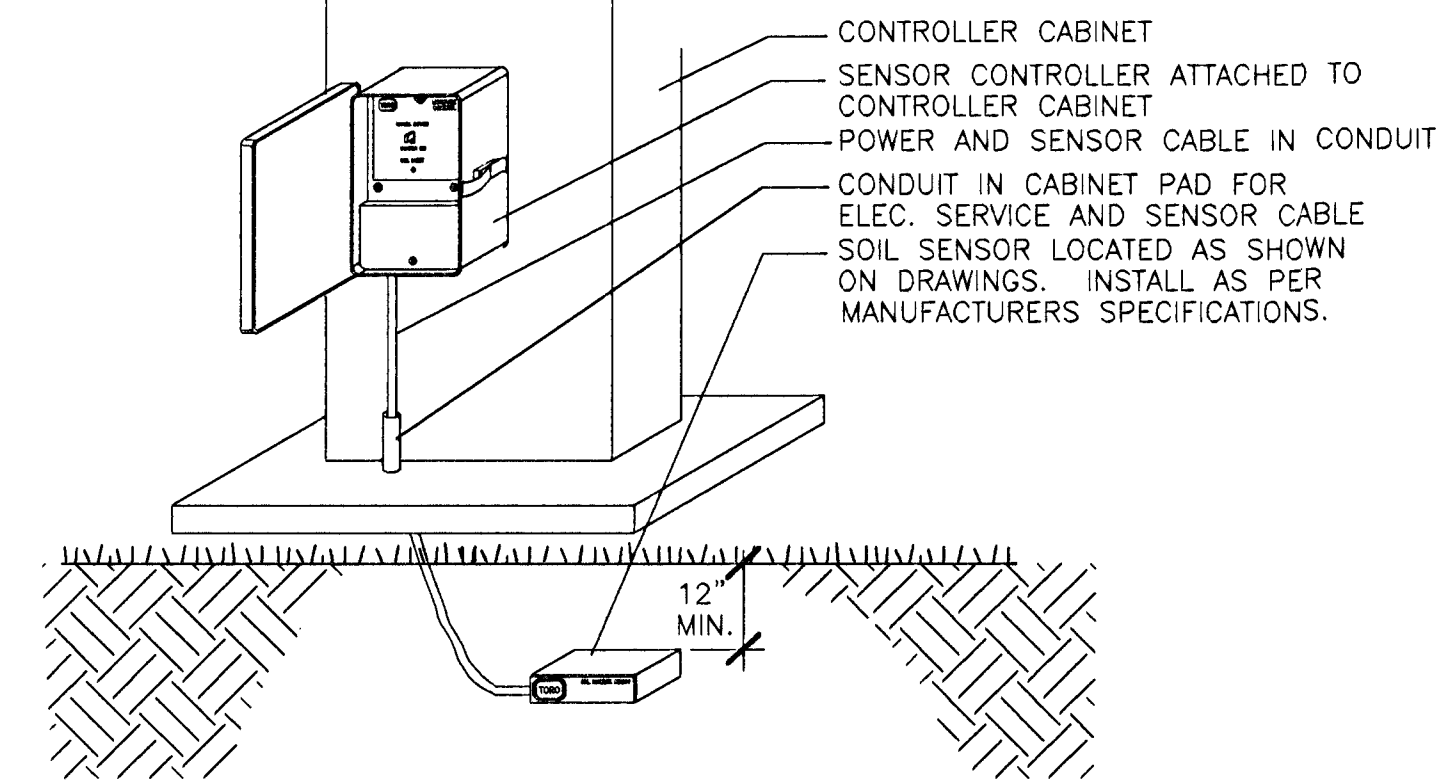
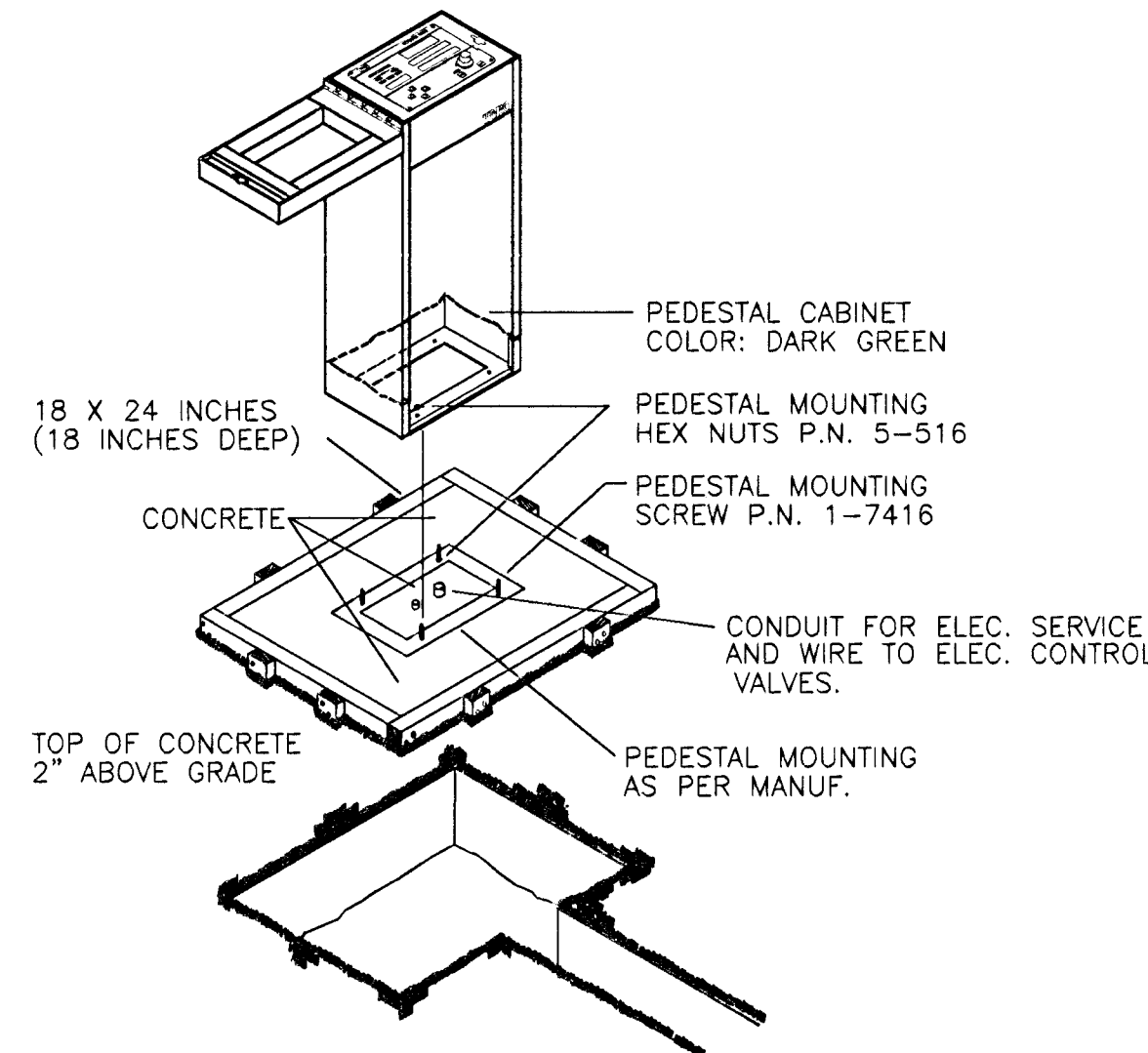
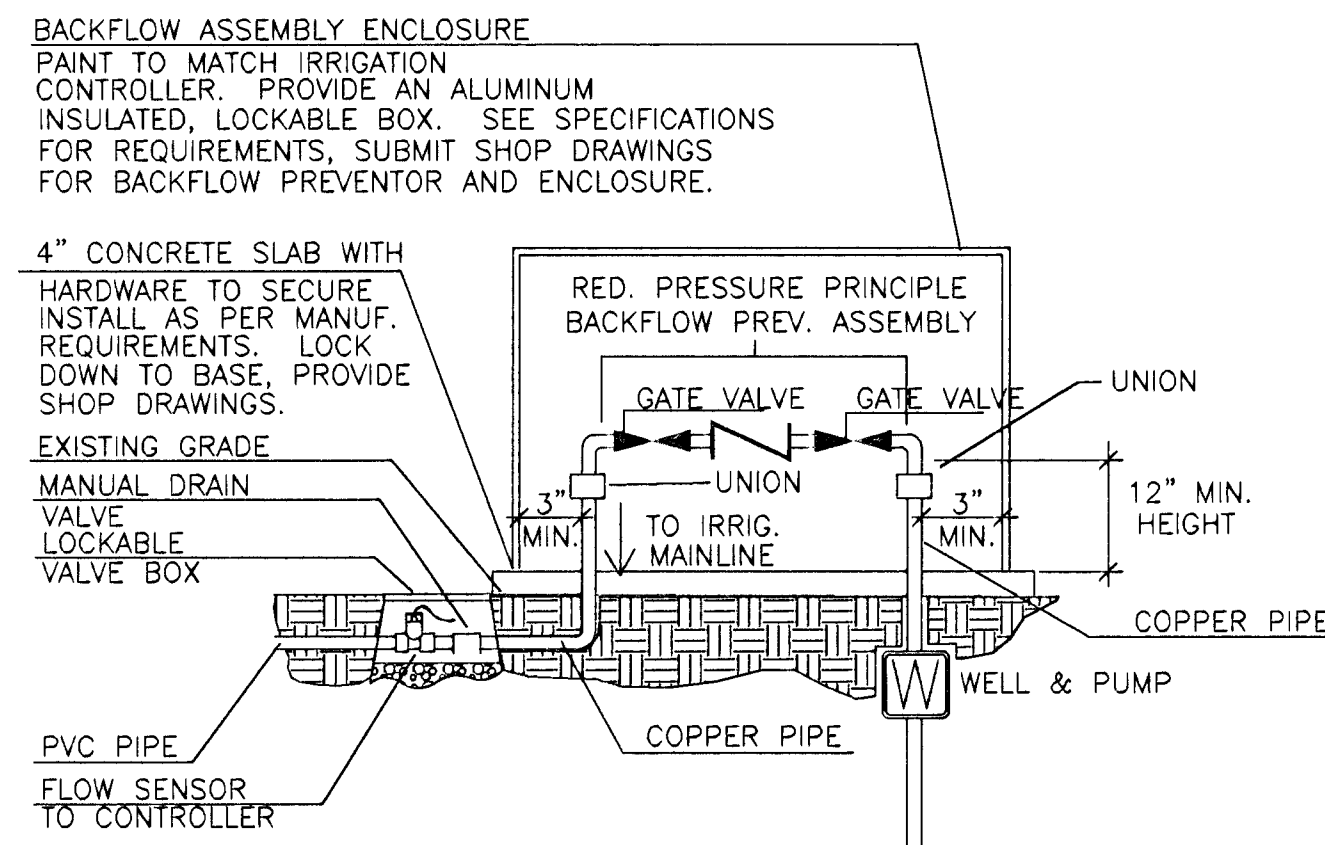


FHWA REG NO.	STATE	PROJECT NO.	YEAR	SHEET NO.	SHEETS
7	KANSAS	54-87-TE-0039-01	1997	35	43

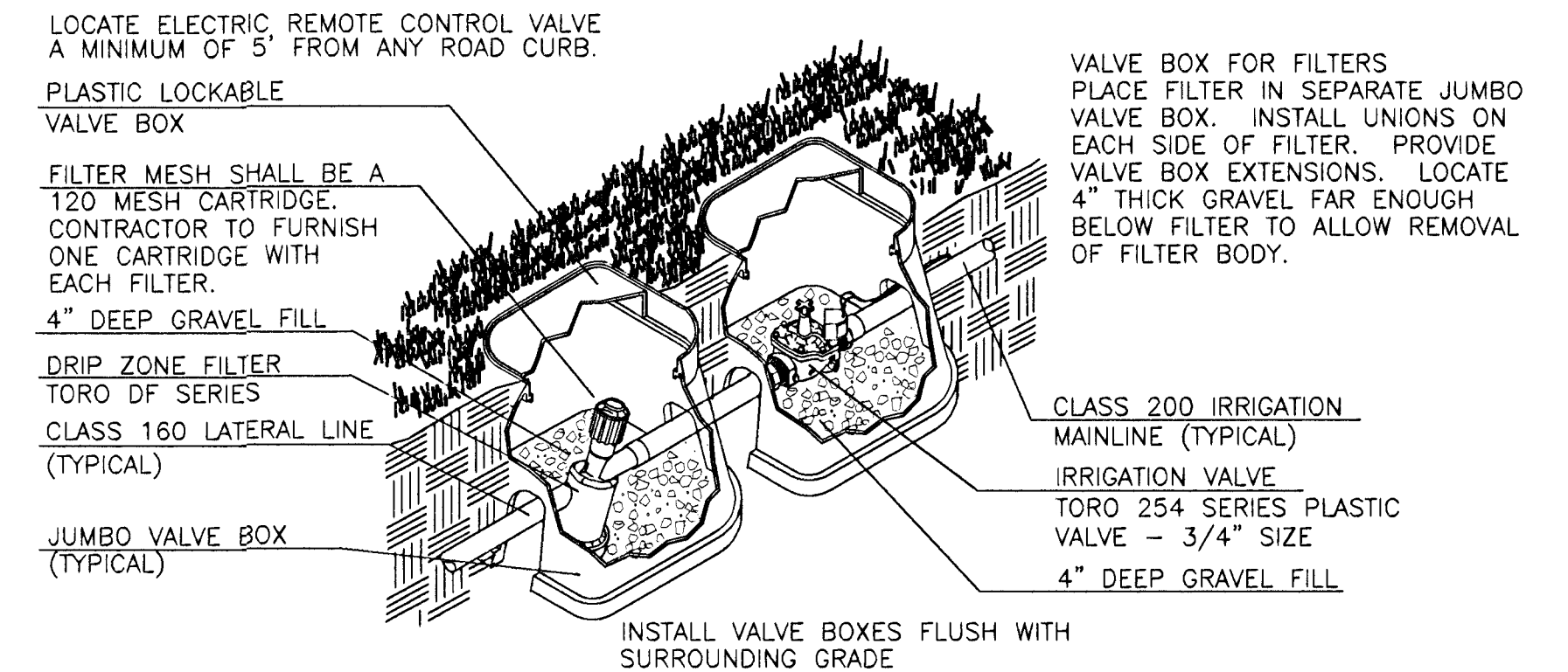
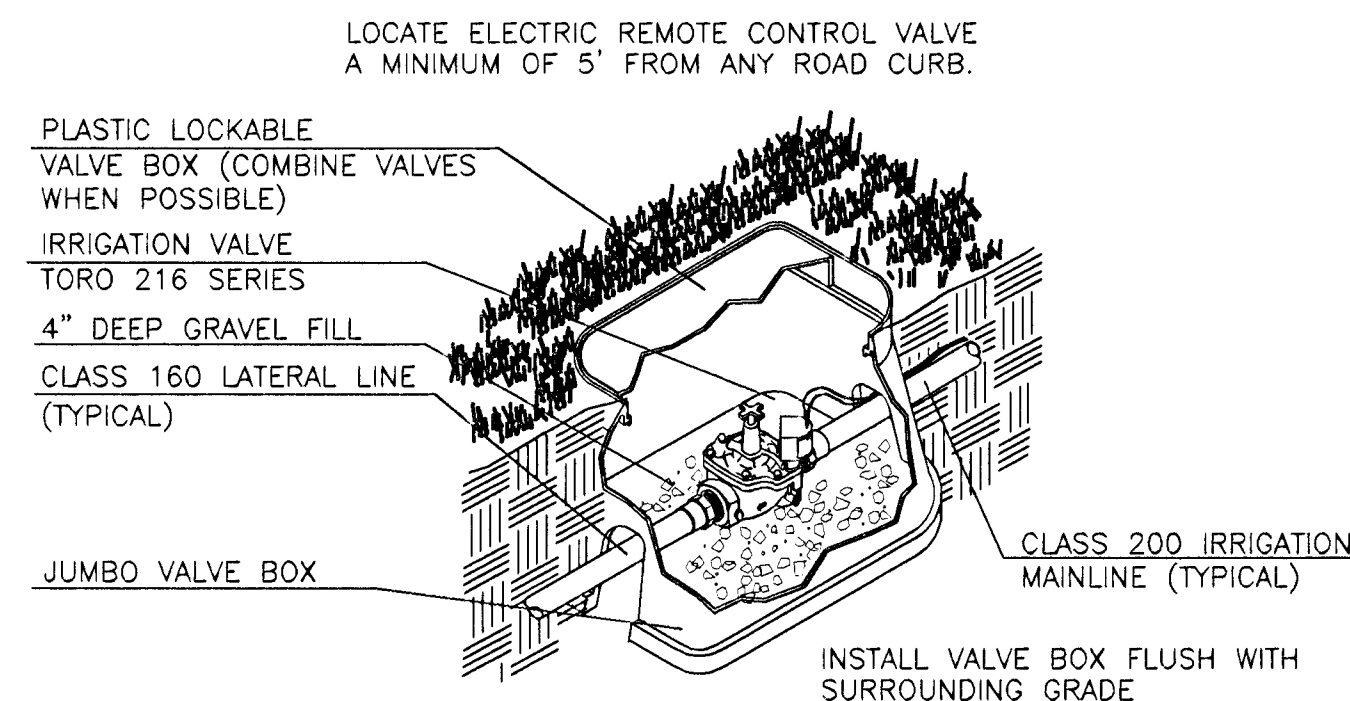
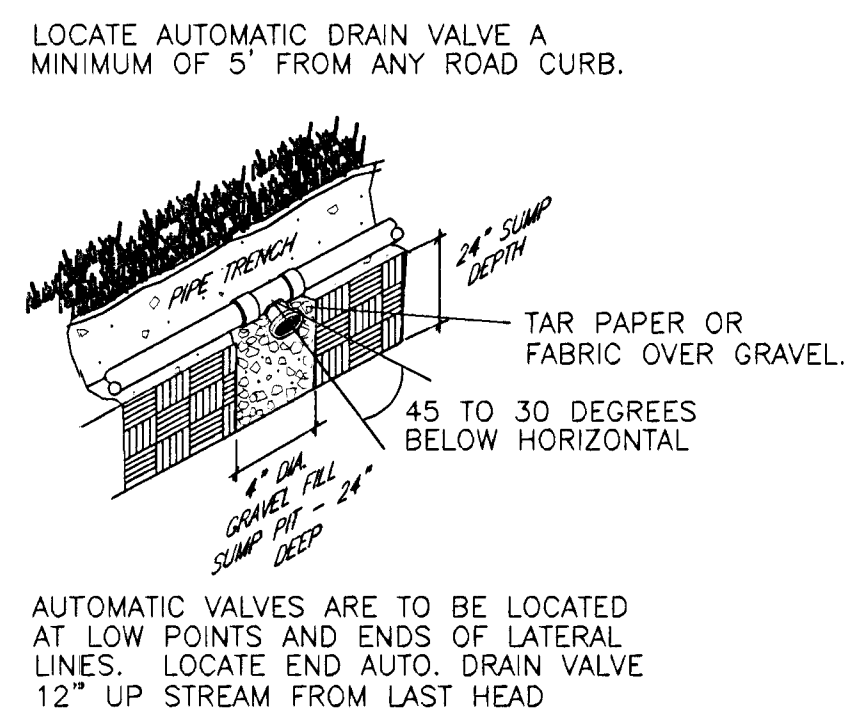
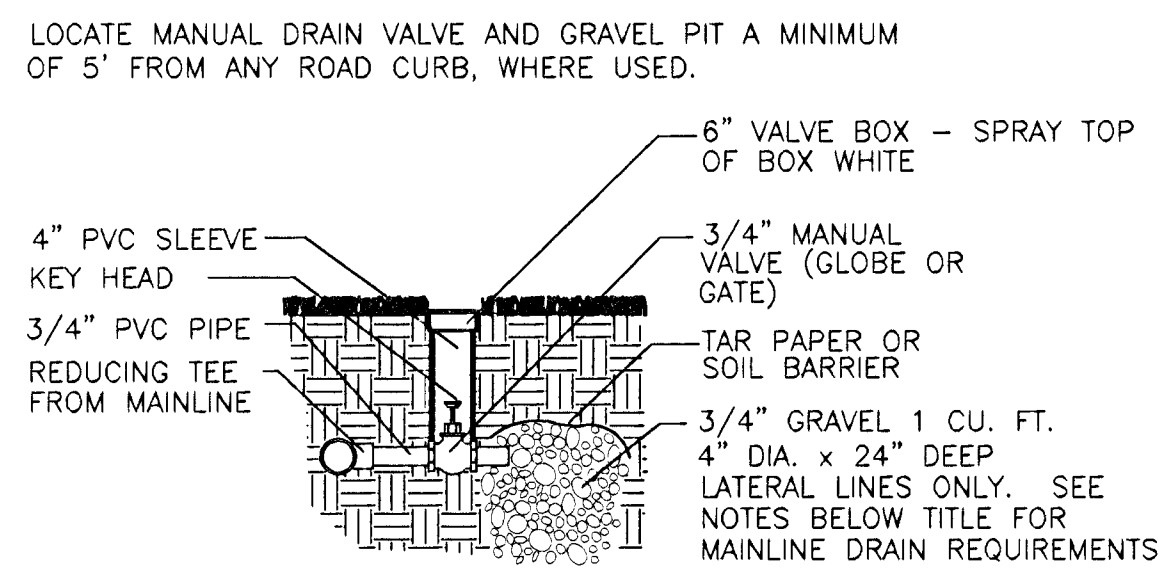


**1** REDUCED PRESSURE BACKFLOW PREVENTER  
LOCATION AS SHOWN ON IRRIGATION PLAN NO SCALE

**2** CONCRETE BASE FOR PEDESTAL MOUNT CONTROLLER  
NO SCALE

**3** SOIL MOISTURE SENSOR  
NO SCALE

**4** MAINLINE ISOLATION VALVE  
NO SCALE



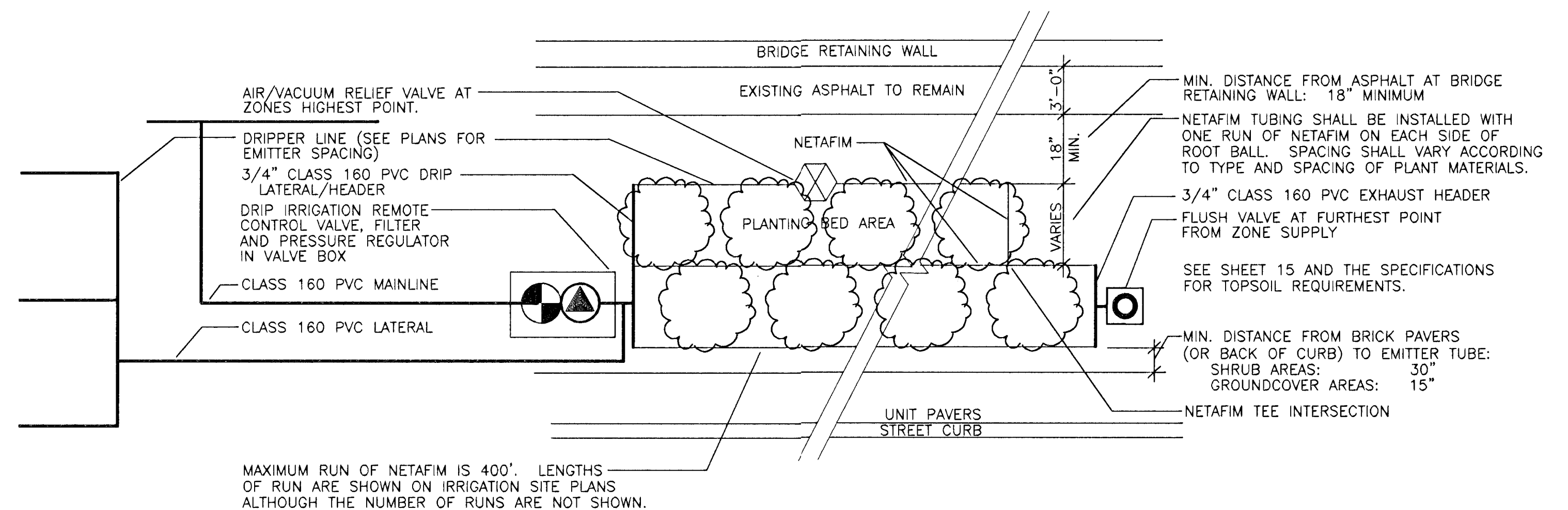
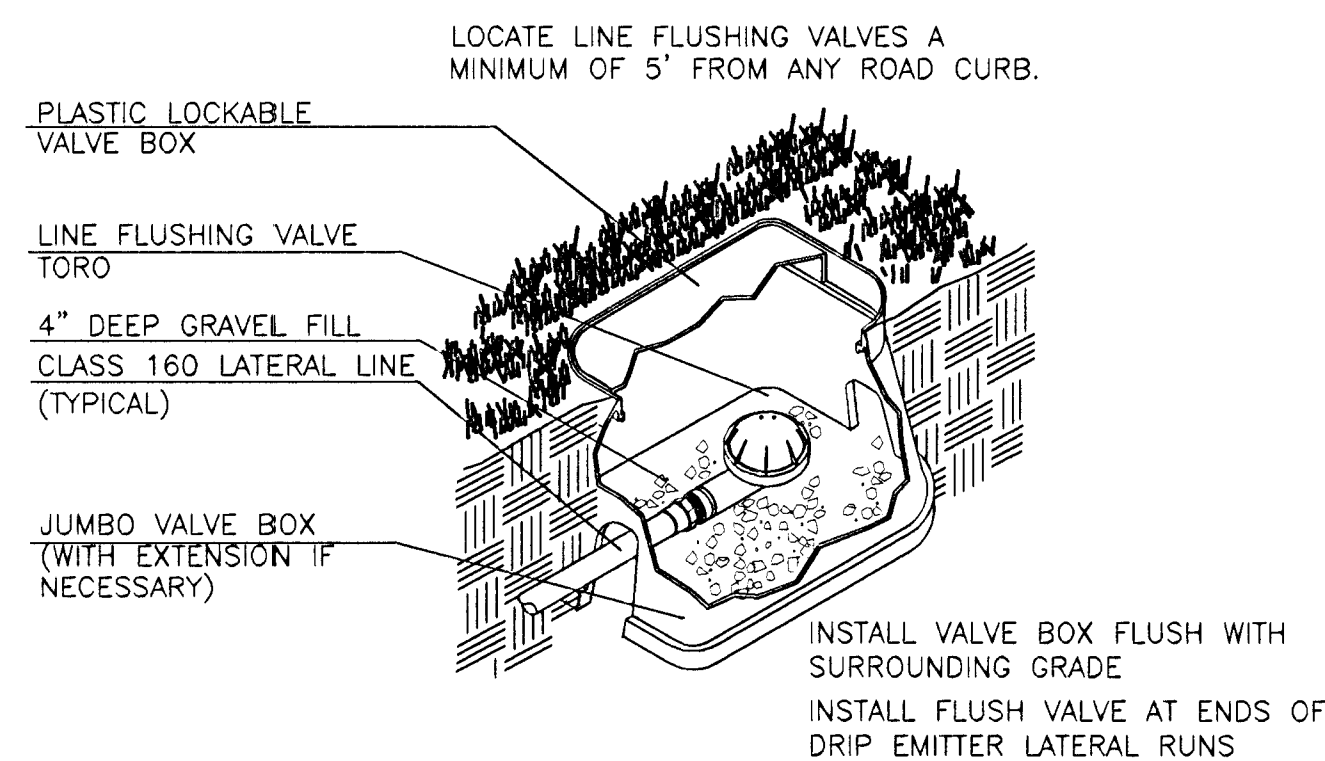
**5** MANUAL DRAIN VALVE DETAIL  
NO SCALE

**6** AUTOMATIC DRAIN AND SUMP PIT  
NO SCALE

**7** ELECTRIC REMOTE IRRIGATION VALVE  
NO SCALE

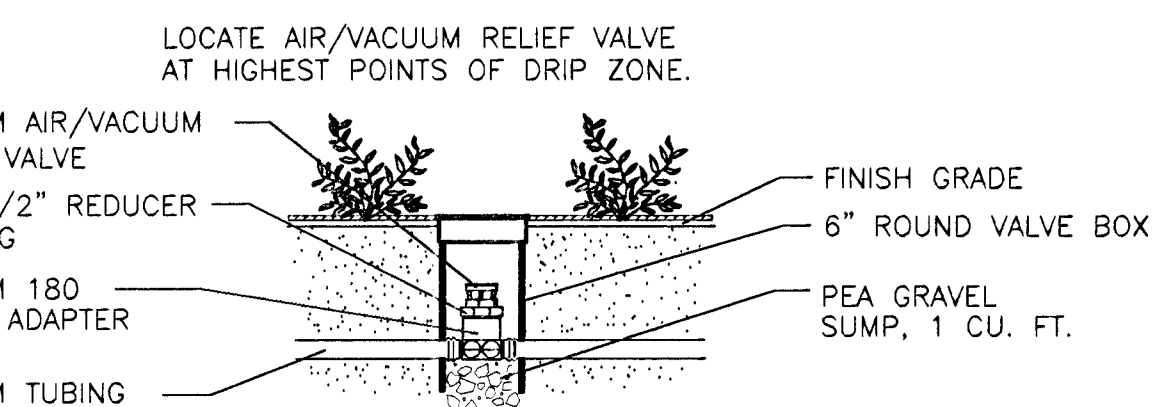
**8** ELECTRIC REMOTE IRRIGATION VALVE AND DRIFT FILTER  
NO SCALE

METHODS OF DRAINING IRRIGATION MAINLINE AND DRIP MAINLINE  
 TYPE 1 - RUN 3/4" DIA. PVC PIPE FROM VALVE TO DAYLIGHT IN SOIL CONDITIONS. SEE SH. 27 & 28.  
 TYPE 2 - RUN 3/4" DIA. PVC PIPE FROM VALVE INTO PIT CONTAINING A MINIMUM OF 1 1/2 CU.YD. OF 3/4" CLEAN (WASHED) AGGREGATE, COVER TOP OF AGGREGATE WITH GEOTEXTILE FABRIC. PROVIDE A MINIMUM OF 12" OF SOIL COVER OVER THE AGGREGATE. INSTALL A MINIMUM OF 10' BEHIND A CURB.  
 TYPE 3 - USE THIS METHOD IN AREAS WITH UNDERDRAIN SYSTEM. SEE SH. 12 THRU 15 AND SH. 29 THRU 32. USE 3/4" CLEAN (WASHED) AGGREGATE IN A 4" DIA. x 18" DEEP SUMP BELOW EACH DRAIN VALVE. 18" FROM THE BOTTOM OF THE PLANT BED. SEE DETAIL 6 SH. 8. THIS WILL DELIVER WATER TO THE BOTTOM OF THE PLANT BED WHERE IT WILL BE PICKED UP BY THE UNDERDRAIN SYSTEM.



**7** ELECTRIC REMOTE IRRIGATION VALVE AND DRIP FILTER  
NO SCALE

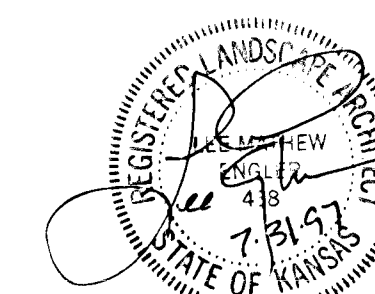
**8** ELECTRIC REMOTE IRRIGATION VALVE AND DRIP FILTER  
NO SCALE



**10** LINE FLUSHING VALVE  
NO SCALE

**11** DRIPLINE LAYOUT IN PLANTING BEDS  
NO SCALE

PROVIDE AS BUILT DRAWINGS SHOWING LOCATIONS OF ALL VALVES AND IRRIGATION EQUIPMENT. INCLUDE DIMENSIONS (TRIANGULATED) FOR ALL VALVES, CONTROLLERS, AND SENSORS.



KANSAS DEPARTMENT OF TRANSPORTATION  
 KELLOGG AND WEST STREET IRRIGATION DETAILS  
 PROJECT NO. # 701227  
**Wilson Darnell Mann**  
 architecture site planning interiors  
 Wichita, Kansas

DESIGNED BY: WDM, PA	CHECKED BY: LME
DRAWN BY: SKW	DATE: 7/31/97 SHEET 35 OF 43