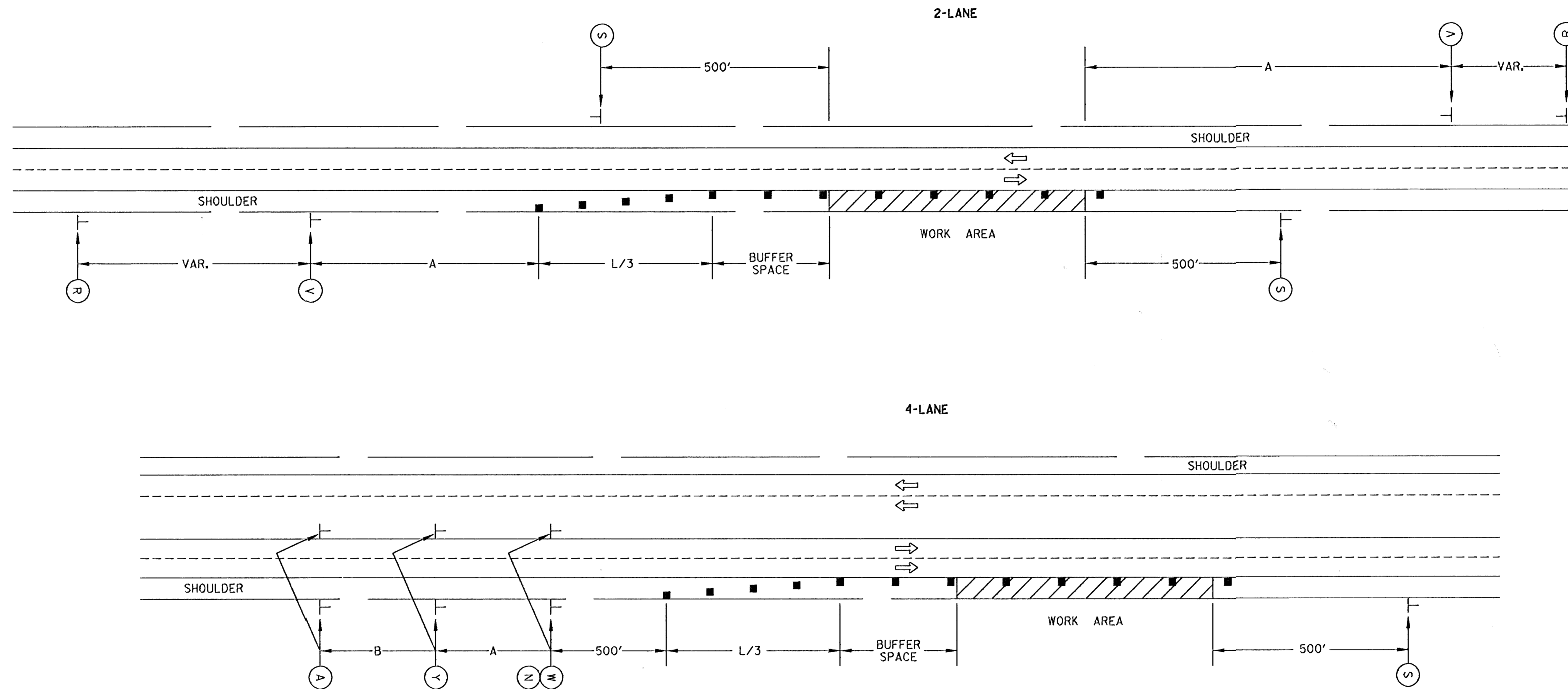


FHWA REGION NO.	STATE	PROJECT NO.	YEAR	SHEET NO.	TOTAL SHEETS
7	KANSAS	54-87 TE 0039-01	97	42	42

REFER TO STD. TE755 FOR IDENTIFICATION OF SIGNS FOR HANDLING TRAFFIC THROUGH CONSTRUCTION.
REFER TO STD. TE735 FOR DIMENSIONS.
■ = CHANNELIZING DEVICES



LEFT-SIDE SIGNS SHALL BE OMITTED FOR A FOUR-LANE UNDIVIDED HIGHWAY.

FOR OPERATIONS OF 60 MINUTES OR LESS, ALL SIGNS AND CHANNELIZING DEVICES MAY BE ELIMINATED IF A VEHICLE WITH AN ACTIVATED FLASHING OR REVOLVING YELLOW LIGHT IS USED.

Drawn By: ross
DGN File: /usr5/ross/newproj/100391r1.dgn
Plotted: 16-SEP-1996 15:10 View: PLOT 6

3				
2				
1	5/23/94	1994 MUTCD REVISIONS	WPR	NAB
NO.	DATE	REVISIONS	BY	APP'D

KANSAS DEPARTMENT OF TRANSPORTATION
TYPICAL TRAFFIC CONTROL
SHOULDER WORK
PAVED SHOULDER WIDTH EIGHT FEET OR MORE
TE742 10/13/93

DESIGNED	5-3-94	APP'D	Nelda A. Buckley
DESIGN CK.	DETAL CK.	QUANTITIES	TRACE CK.