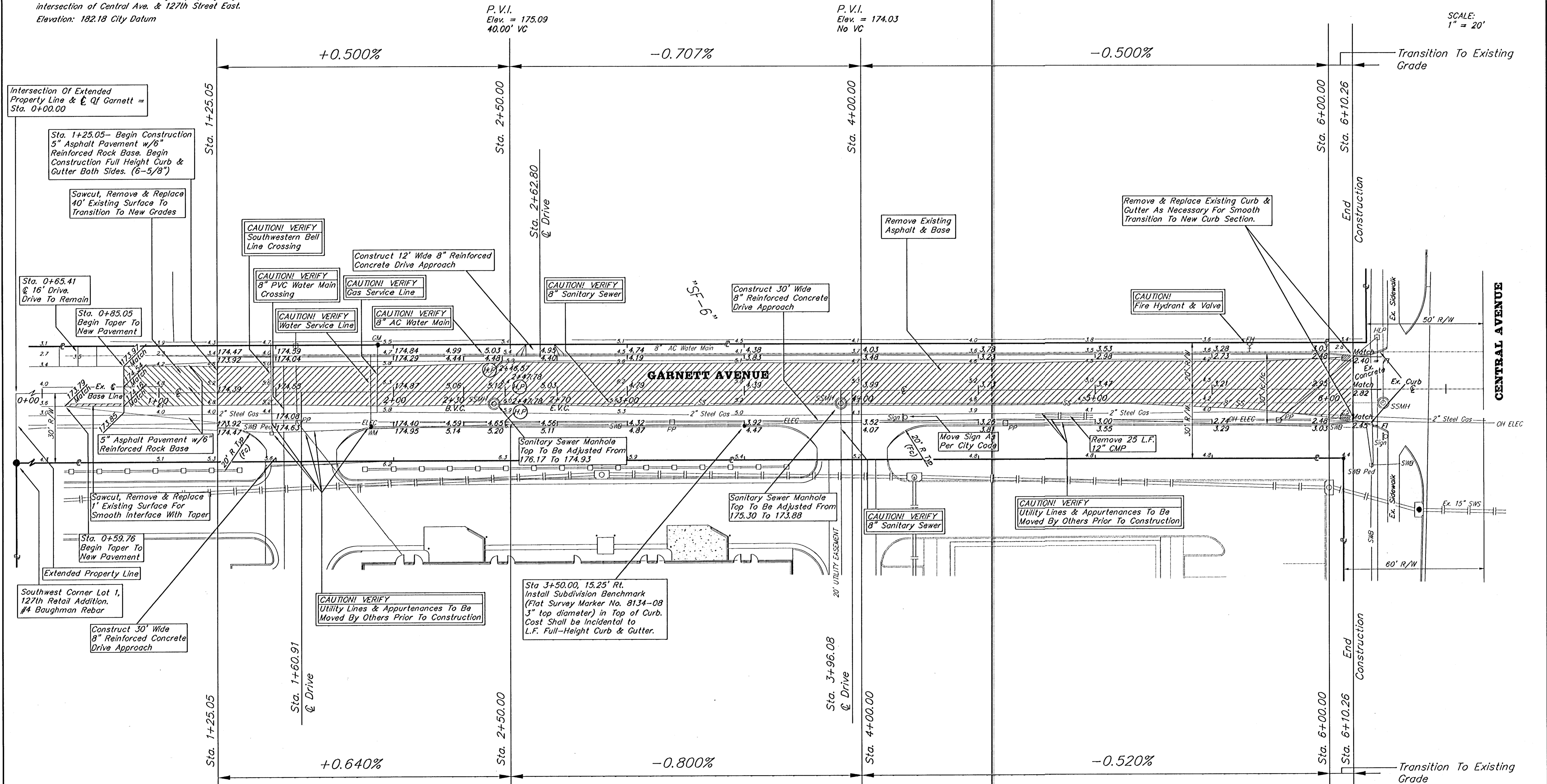


BENCHMARK:

"□" Located in traffic signal box base. Traffic signal located at the Northeast corner of subject property adjacent to the intersection of Central Ave. & 127th Street East.
Elevation: 182.18 City Datum

SCALE:
1" = 20'



Intersection Of Extended Property Line & Qf Garnett = Sta. 0+00.00

Sta. 1+25.05- Begin Construction 5" Asphalt Pavement w/6" Reinforced Rock Base. Begin Construction Full Height Curb & Cutter Both Sides. (6-5/8")

Sawcut, Remove & Replace 40' Existing Surface To Transition To New Grades

Sta. 0+65.41 @ 16' Drive. Drive To Remain

Sta. 0+85.05 Begin Taper To New Pavement

5" Asphalt Pavement w/6" Reinforced Rock Base

Sawcut, Remove & Replace 1' Existing Surface For Smooth Interface With Taper

Sta. 0+59.76 Begin Taper To New Pavement

Extended Property Line

Southwest Corner Lot 1, 127th Retail Addition. #4 Baughman Rebar

Construct 30' Wide 8" Reinforced Concrete Drive Approach

CAUTION! VERIFY Southwestern Bell Line Crossing

CAUTION! VERIFY 8" PVC Water Main Crossing

CAUTION! VERIFY Gas Service Line

CAUTION! VERIFY Water Service Line

CAUTION! VERIFY 8" AC Water Main

CAUTION! VERIFY 8" Sanitary Sewer

Construct 30' Wide 8" Reinforced Concrete Drive Approach

Remove Existing Asphalt & Base

Remove & Replace Existing Curb & Gutter As Necessary For Smooth Transition To New Curb Section.

CAUTION! Fire Hydrant & Valve

Sanitary Sewer Manhole Top To Be Adjusted From 176.17 To 174.93

Sanitary Sewer Manhole Top To Be Adjusted From 175.30 To 173.88

CAUTION! VERIFY 8" Sanitary Sewer

CAUTION! VERIFY Utility Lines & Appurtenances To Be Moved By Others Prior To Construction

CAUTION! VERIFY Utility Lines & Appurtenances To Be Moved By Others Prior To Construction

Sta 3+50.00, 15.25' Rt. Install Subdivision Benchmark (Flat Survey Marker No. 8134-08 3" top diameter) in Top of Curb. Cost Shall be Incidental to L.F. Full-Height Curb & Gutter.

Street & Station	Subdivision Bench Marks Location Description	Elevation
Garnett 3+50.00, 15.25' Rt.	260.3 feet south of the south end of the E. Curb Return of Garnett Ave. at Central. Disk located at mid-point of E. Curb.	

P. V.I. Elev. = 175.27 40.00' VC

P. V.I. Elev. = 174.07 No VC

Contractor Shall Follow All Applicable Best Management Practices (BMP) For Erosion Control, See Sheet 4

STREET IMPROVEMENTS
GARNETT AVENUE
CENTRAL TO 625' SOUTH

BAUGHMAN COMPANY P.A.
ENGINEERING, SURVEYING, & PLANNING
315-282-7271 • 315 ELLIS • WICHITA, KANSAS 67211

PROJECT NUMBER
472-83184

DESIGN LU DRAWN LU APPROVED NBW DATE 08/01 SCALE NOTED SHEET 5 OF 7

127th Central (Page-1) 01-03-2005