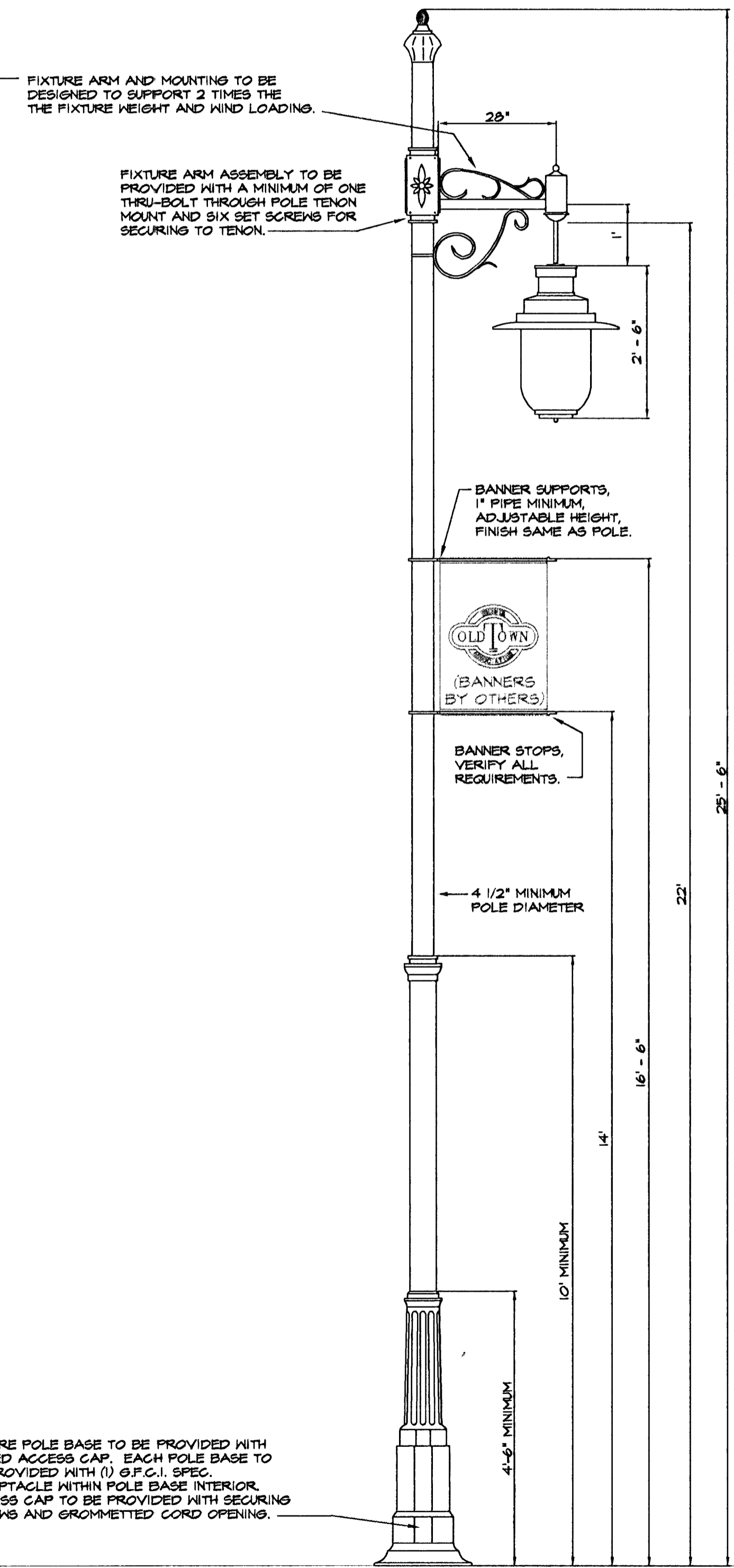
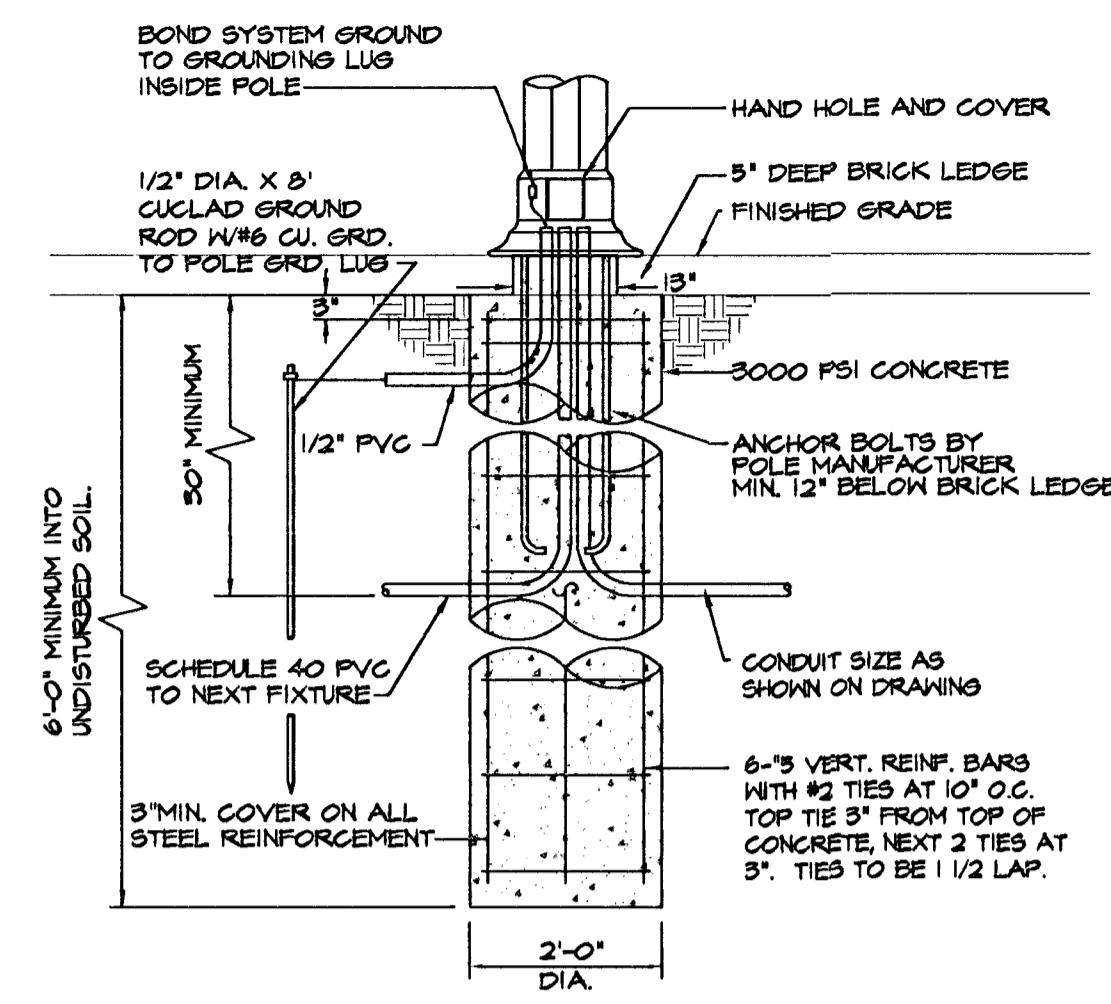


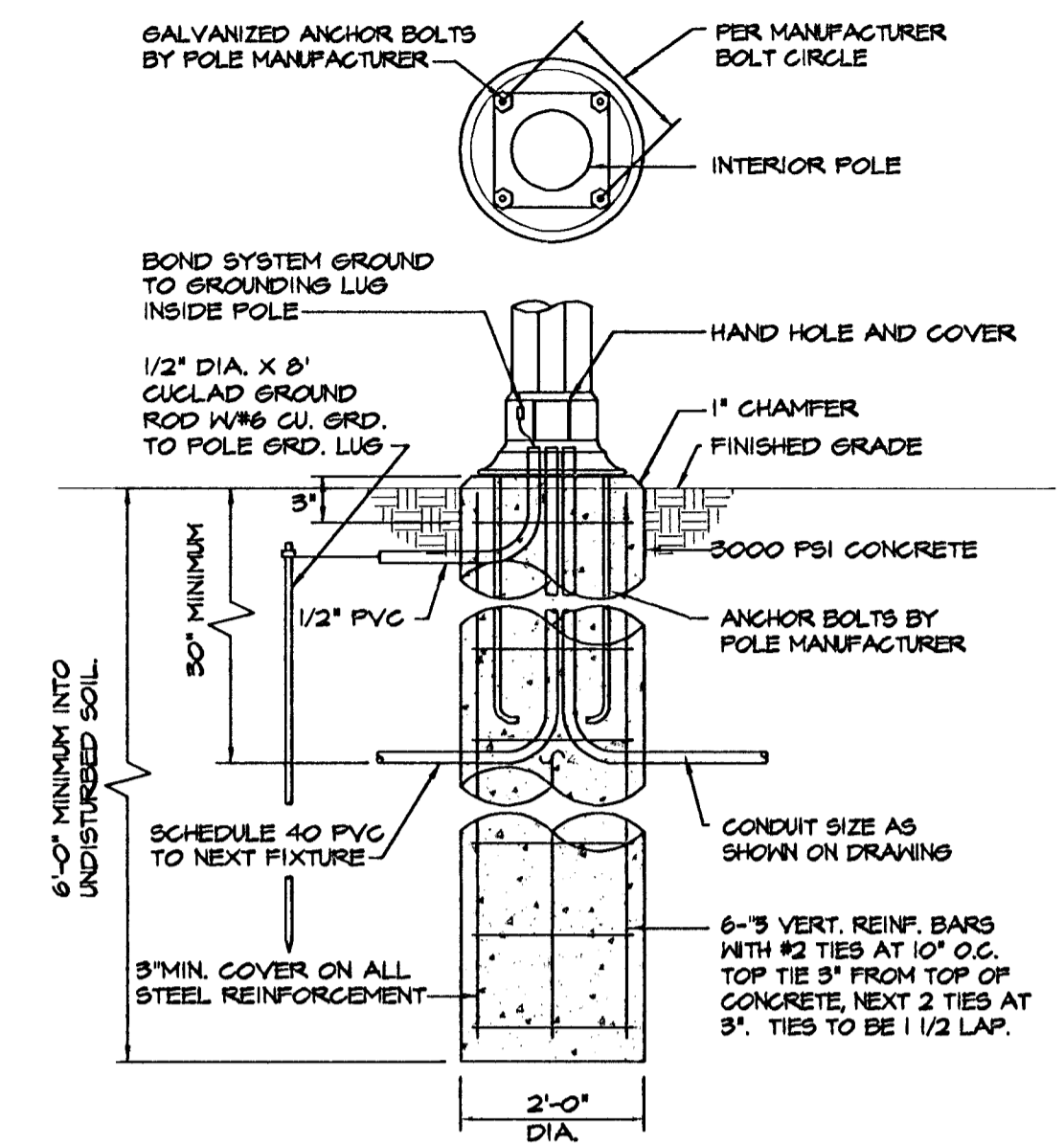
LIGHT FIXTURE "A" DETAIL



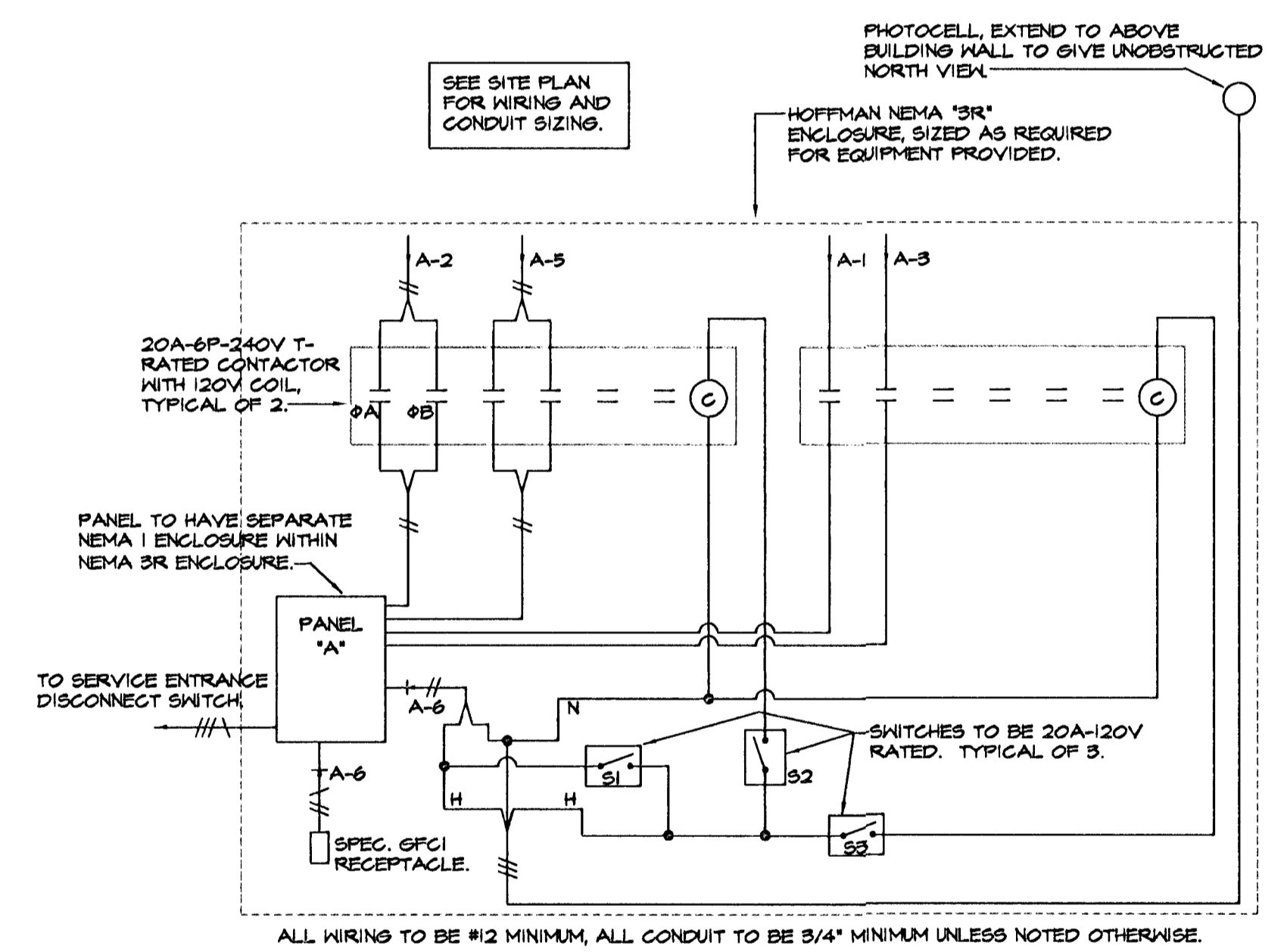
LIGHT FIXTURE "C" DETAIL



POLE BASE DETAIL WITH BRICK LEDGE
N.T.S.



POLE BASE DETAIL
N.T.S.



CONTROL CABINET "A" WIRING DETAIL
NO SCALE
(CONTROL CABINET "B" IS TYPICAL)

TYPICAL SWITCH "S1", "S2" & "S3" OPERATION.
SWITCH S1 BYPASSES PHOTOCELL.
SWITCH S2 ACTIVATES/DEACTIVATES POLE LIGHTING.
SWITCH S3 ACTIVATES/DEACTIVATES RECEPTACLES.



Electrical Engineering and Design
626 N. Broadway, Suite B
Wichita, Ka 67214-3097
(316) 264-3061
FAX: (316) 264-3042

OLD TOWN PARKING LOTS LOTS #9 AND #10			
SRB	841 SOUTH HILLSIDE WICHITA, KANSAS 67211	316-852-7754 FAX 852-7932	REVISED
SAVOY, RUGGLES & BOHM, P. A. ENGINEERING & SURVEYING			8
PROJECT NUMBER			
DRAWN SVA	DESIGN SVA	REVIEW SVA	DATE 2/18/94
UTILITY	SRB JOB 113E	14	

S.V.A. FILE NAME: 01\PROJECTS\020201.DWG DATE: 02/18/94, TIME: 07:51