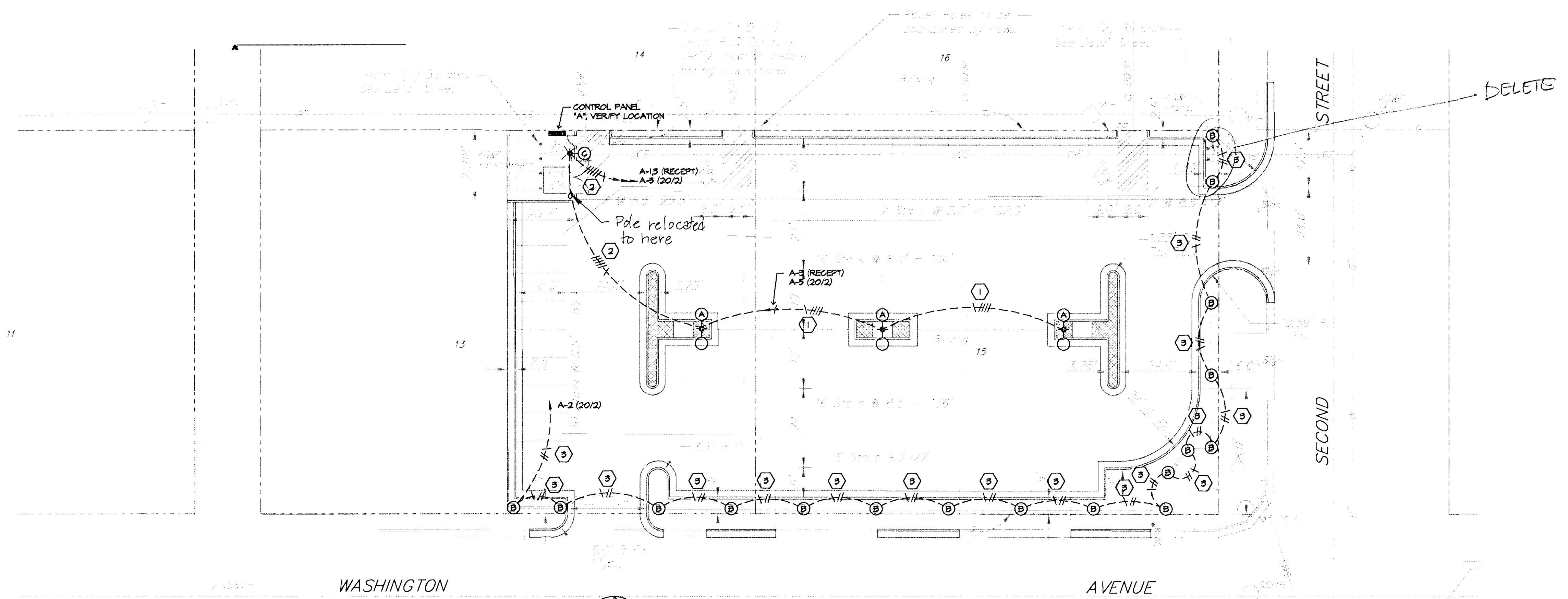


### FEEDER SCHEDULE (THIS SHEET ONLY)

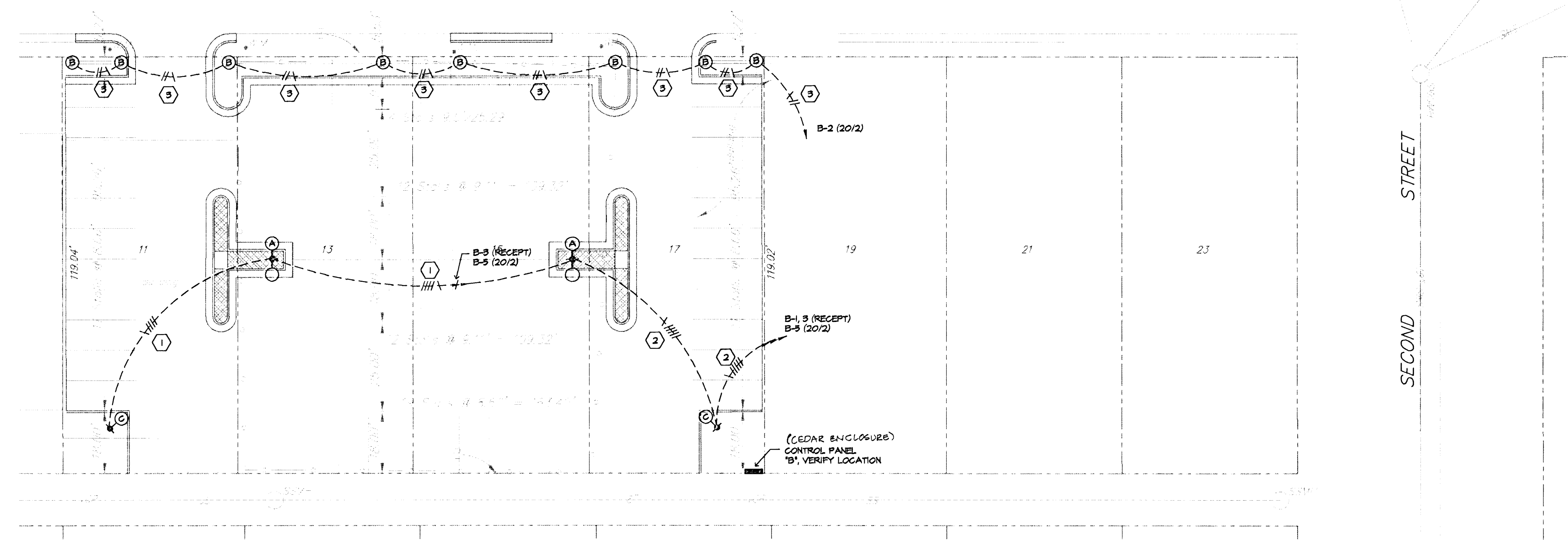
FEEDER IDENT.	CONDUCTORS		GROUND SIZE PER SET	ISOLATED GROUND SIZE PER SET	CONDUIT SIZE PER SET
	SETS	QUANT. PER SET			
1	1	4 #10	#10	--	3/4"
2	1	5 #10	#10	--	3/4"
3	1	2 #10	#10	--	3/4"

NOTE: FEEDERS ARE LISTED ON THE BASIS OF USING METALLIC CONDUITS IF P.V.C. IS USED FOR UNDERGROUND FEEDERS, AN EQUIPMENT GROUND CONDUCTOR SIZED PER N.E.C. MUST BE ROUTED IN CONDUIT WITH CIRCUIT CONDUCTORS. CONDUIT SIZE AS LISTED MUST BE INCREASED AS REQUIRED.

- PLAN NOTES:
- REFER TO RELATED DRAWINGS FOR ALL CONTROL AND DISTRIBUTION REQUIREMENTS, AND ALL LIGHT FIXTURES AND BASES.
  - ALL CONDUCTORS TO BE CLEARLY AND PERMANENTLY MARKED AT ALL ENDS AND JUNCTION POINTS WITH PANEL DESIGNATION AND CIRCUIT NUMBER.



### LIGHTING FOR PARKING LOT #10 SCALE: 1" = 20' - 0"



### LIGHTING FOR PARKING LOT #9 SCALE: 1" = 20' - 0"



Electrical Engineering and Design  
628 N. Broadway, Suite 8  
Wichita, KS 67214-3887  
(316) 264-3081  
FAX: (316) 264-3042

RECORD COPY - REVISED 7-11-94

OLD TOWN PARKING LOTS  
LOTS #9 AND #10

**SRB** 841 SOUTH HILLSIDE 316-652-7754  
WICHITA, KANSAS 67211 FAX 652-7932

**SAVOY, RUGGLES & BOHM, P. A.**  
ENGINEERING & SURVEYING

PROJECT NUMBER

DRAWN SVA	DESIGN SVA	REVIEW SVA	DATE 2/18/94	UTILITY	SRB JOB 113E
--------------	---------------	---------------	-----------------	---------	-----------------

9  
14

S.V.A. DATE: 03/02/94, DATE: 02/18/94, TIME: 07:45