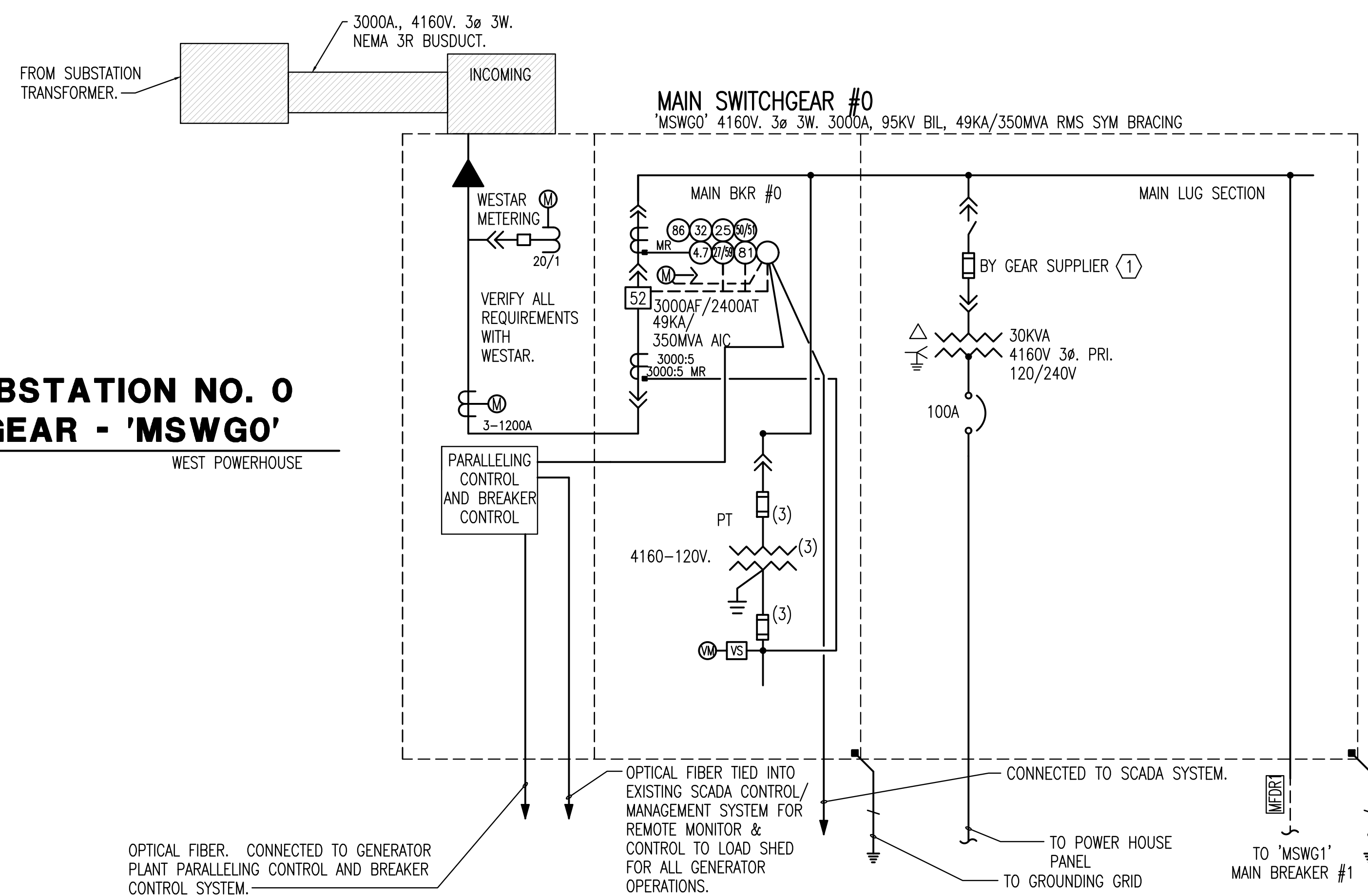


EAST SUBSTATION NO. 2 SWITCHGEAR - 'MSWG2'
 SCALE: NO SCALE EAST POWERHOUSE

OPTICAL FIBER. CONNECTED TO GENERATOR PLANT PARALLELING CONTROL AND BREAKER CONTROL SYSTEM.

OPTICAL FIBER TIED INTO SCADA CONTROL/ MANAGEMENT SYSTEM FOR REMOTE MONITOR & CONTROL TO LOAD SHED FOR ALL GENERATOR OPERATIONS.



KEY NOTES:

- (1) ORIGINAL VENDOR PROVIDED CIRCUIT BREAKER IN LIEU OF FUSE. RECORD ANSI FUNCTIONS AND SETTINGS.

WEST SUBSTATION NO. 0 SWITCHGEAR - 'MSWG0'
 SCALE: NO SCALE WEST POWERHOUSE

GENERAL ONE-LINE DIAGRAM NOTES:

- ALL BREAKERS ARE MOTORIZED.
- UNDER NORMAL POWER ALL BREAKERS ARE CLOSED
- UNDER EMERGENCY POWER (3 GENERATORS ONLY), MAIN BREAKER #2 OPEN, TIE BREAKER #2 CLOSED, & BREAKERS #2A AND #2D CLOSED, BREAKERS #2B & #2C OPEN.
- UNDER EMERGENCY POWER (4 GENERATORS RUNNING) MAIN BREAKER #2 OPEN, TIE BREAKER #2 CLOSED, BREAKERS #2A AND #2D CLOSED, BREAKERS #2B & #2C CLOSED.
- ALL STEPS OF BREAKER CLOSINGS SHALL BE FIELD SELECTABLE/PROGRAMMABLE.

LOGIC DESCRIPTION

- MAIN BREAKER #2 AND TIE BREAKER #2 (SEE SHEET E1.4) SHALL BE CAPABLE OF CLOSED TRANSITION WHEN TRANSFERRING TO AND FROM GENERATOR BREAKERS TO AND FROM NORMAL POWER.
- UNDER NORMAL POWER ALL BREAKERS ARE CLOSED
- UNDER EMERGENCY POWER (3 GENERATORS ONLY), MAIN BREAKER #2 OPEN, TIE BREAKER #2 CLOSED, & BREAKERS #2A AND #2D CLOSED, BREAKERS #2B & #2C OPEN.
- UNDER EMERGENCY POWER (4 GENERATORS RUNNING) MAIN BREAKER #2 OPEN, TIE BREAKER #2 CLOSED, BREAKERS #2A AND #2D CLOSED, BREAKERS #2B & #2C CLOSED.
- ALL STEPS OF BREAKER CLOSINGS SHALL BE FIELD SELECTABLE/PROGRAMMABLE.



CITY OF WICHITA, WATERWORKS
 ELECTRICAL PREVENTATIVE MAINTENANCE
 WICHITA, KANSAS

Issue:	Date:	
FOR BID	MARCH 2021	

MV SWITCHGEAR