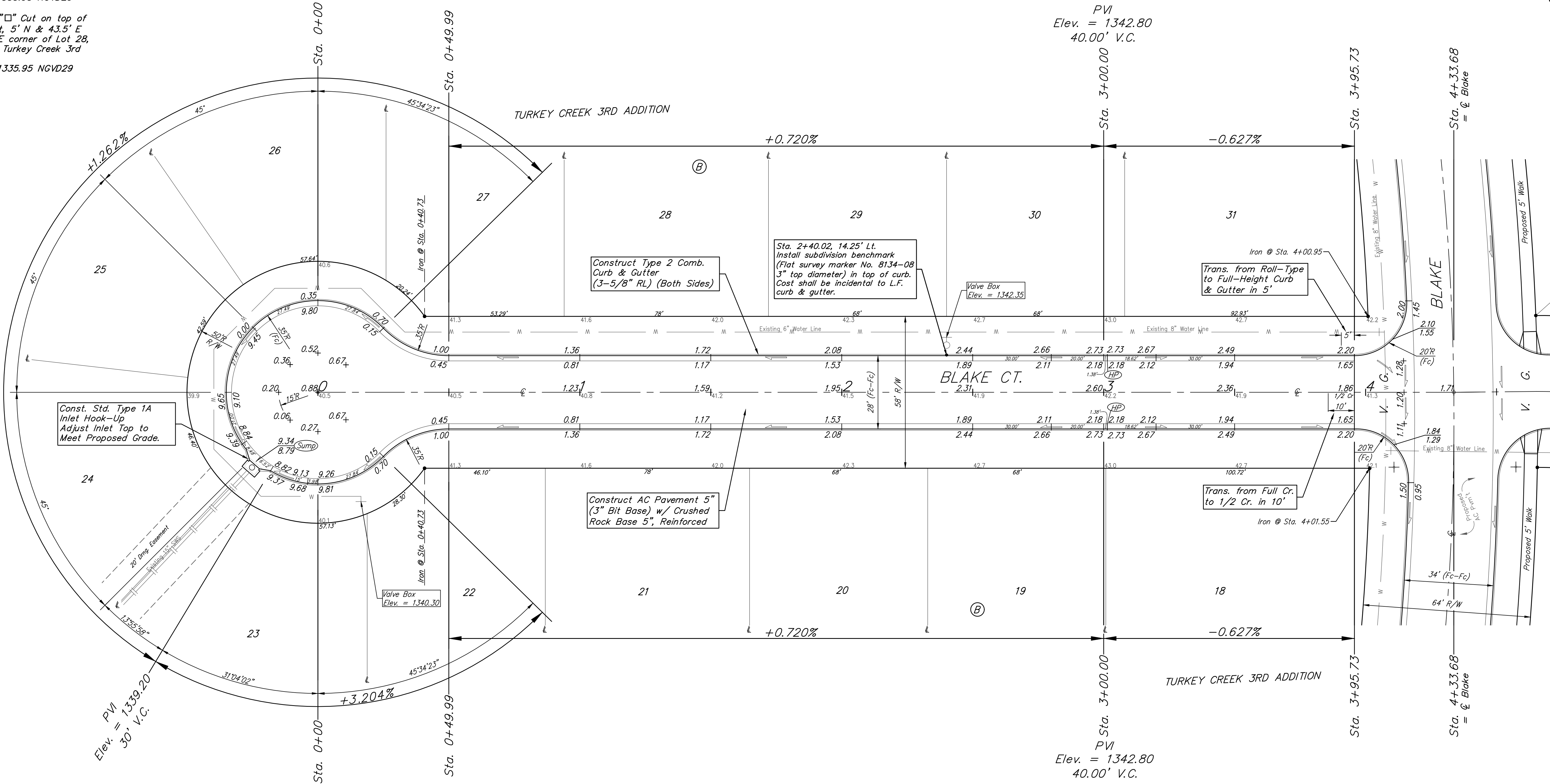
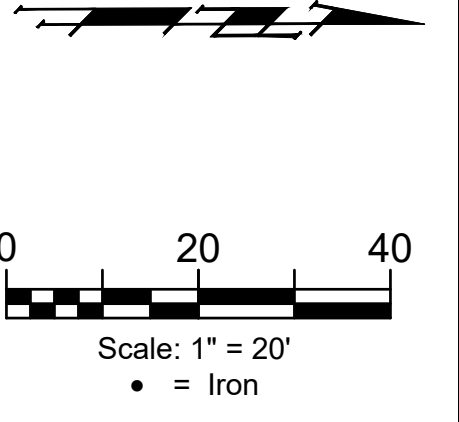


BENCHMARKS:

BM #1: "□" Cut in top of curb, south of SE corner of Lot 82, Block A, Turkey Creek 3rd Addition.
Elev. = 1335.49 NGVD29

BM #2: "□" Cut on top of curb inlet, SW of the SE corner of Lot 81, Block A, Turkey Creek 3rd Addition.
Elev. = 1335.95 NGVD29

BM #3: "□" Cut on top of yard inlet, 5' N & 43.5' E of the SE corner of Lot 28, Block H, Turkey Creek 3rd Addition.
Elev. = 1335.95 NGVD29



Const. Std. Type 1A Inlet Hook-Up Adjust Inlet Top to Meet Proposed Grade.

Construct Type 2 Comb. Curb & Gutter (3-5/8" RL) (Both Sides)

Sta. 2+40.02, 14.25' Lt. Install subdivision benchmark (Flat survey marker No. 8134-08 3" top diameter) in top of curb. Cost shall be incidental to L.F. curb & gutter.

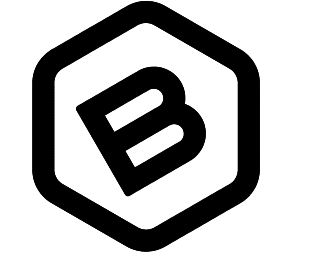
Valve Box Elev. = 1342.35

Trans. from Roll-Type to Full-Height Curb & Gutter in 5'

Construct AC Pavement 5" (3" Bit Base) w/ Crushed Rock Base 5", Reinforced

Trans. from Full Cr. to 1/2 Cr. in 10'

Roll type curb & gutter to be constructed on the pavement on this sheet. Top of curb elevation are given for full height curb.



BAUGHMAN COMPANY

315 Ellis St.
Wichita, KS 67211
316-262-7271
BaughmanCo.com

TURKEY CREEK 3RD ADDITION PHASE 4

BLAKE CT

Street Paving Improvements Lot 18 - Lot 31, Block C

PROJECT NUMBER:
472-2020-085616

DESIGN: DMV DRAWN: JAK
DATE: Mar. 31, 2021

SHEET OF
11 26

File: E:\Projects\Turkey Creek 3rd\Engineering\Phase 4\Str. 20-02-E497\STR PLANS.dwg