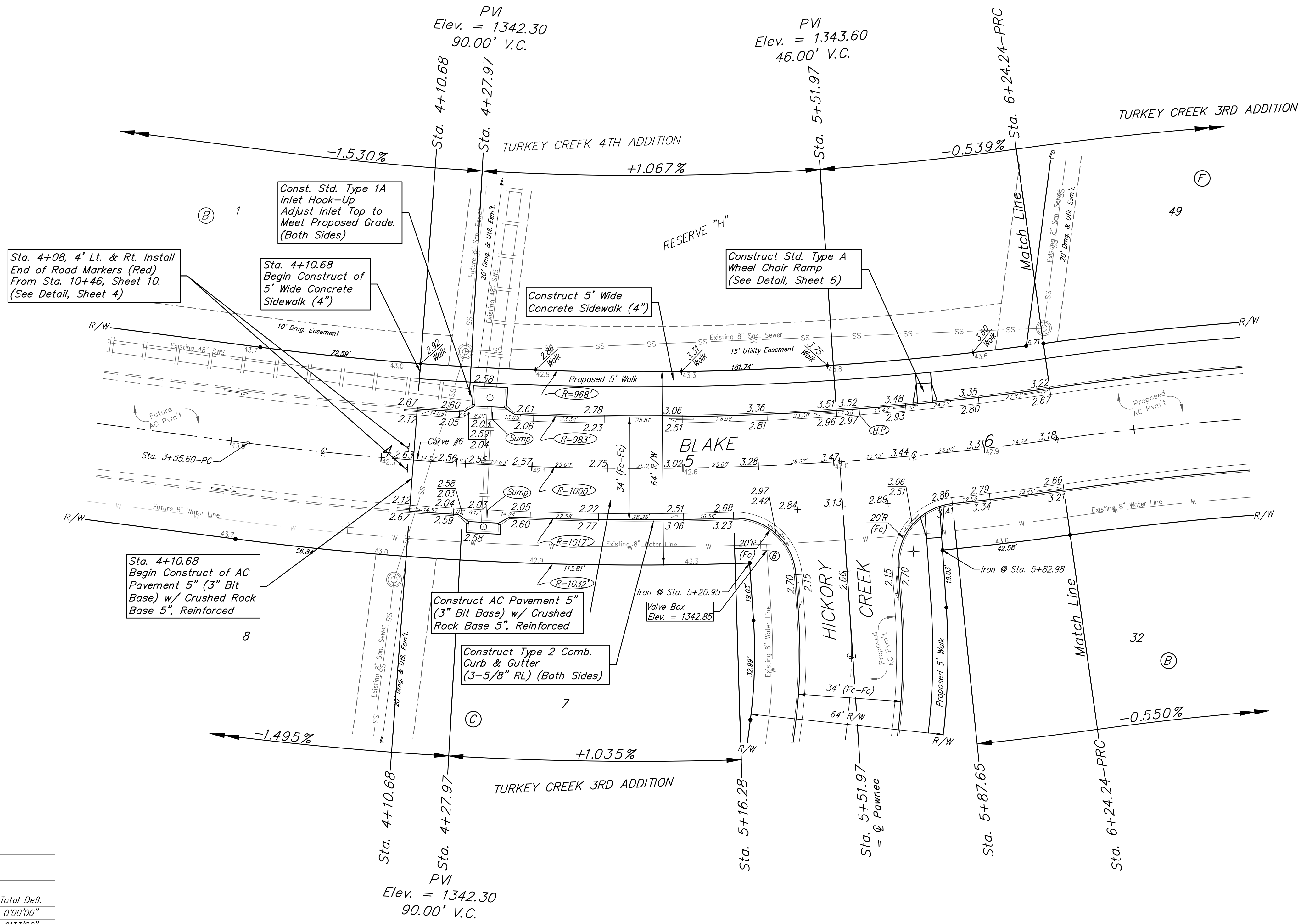
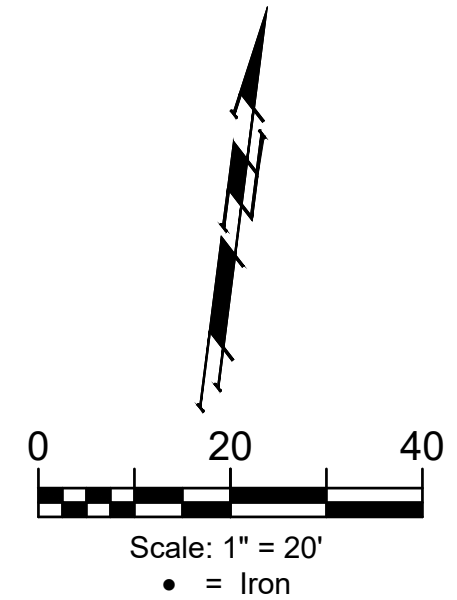


**BENCHMARKS:**

BM #1: "□" Cut in top of curb, south of SE corner of Lot 82, Block A, Turkey Creek 3rd Addition.  
Elev. = 1335.49 NGVD29

BM #2: "□" Cut on top of curb inlet, SW of the SE corner of Lot 81, Block A, Turkey Creek 3rd Addition.  
Elev. = 1335.95 NGVD29

BM #3: "□" Cut on top of yard inlet, 5' N & 43.5' E of the SE corner of Lot 28, Block H, Turkey Creek 3rd Addition.  
Elev. = 1335.95 NGVD29



Curve #6

Curve Data Based on Centerline

Rad. = 1000' Delta = 152°32'11" Tangent = 135.11'  
Arc = 268.64' L.C. = 267.78' Def./Pt. = 1.71856 Min.

Station	Arc	Face Chord Lengths		Defl.	Total Defl.
		8' Left	8' Right		
3+55.60	-	-	-	0°00'00"	0°00'00"
3+75.00	19.40'	18.91'	19.88'	0°33'20"	0°33'20"
4+00.00	25.00'	24.37'	25.62'	0°42'58"	1°16'18"
4+25.00	25.00'	24.37'	25.62'	0°42'58"	1°59'16"
4+50.00	25.00'	24.37'	25.62'	0°42'58"	2°42'14"
4+75.00	25.00'	24.37'	25.62'	0°42'58"	3°25'12"
5+00.00	25.00'	24.37'	25.62'	0°42'58"	4°08'10"
5+16.28	16.28'	15.87'	16.68'	0°27'58"	4°36'08"
5+25.00	8.72'	8.50'	8.94'	0°14'59"	4°51'07"
5+50.00	25.00'	24.37'	25.62'	0°42'58"	5°34'05"
5+75.00	25.00'	24.37'	25.62'	0°42'58"	6°17'03"
5+87.65	12.65'	12.33'	12.96'	0°21'45"	6°38'48"
6+00.00	12.35'	12.04'	12.66'	0°21'13"	7°00'01"
6+24.24	24.24'	23.63'	24.84'	0°41'39"	7°41'40"

Roll type curb & gutter to be constructed on the pavement on this sheet.  
Top of curb elevation are given for full height curb.



**BAUGHMAN COMPANY**

315 Ellis St.  
Wichita, KS 67211  
316-262-7271  
BaughmanCo.com

---

TURKEY CREEK 3RD ADDITION  
PHASE 4

**BLAKE**

---

Street Paving Improvements  
Sta. 4+10.68 to Sta. 6+24.24

PROJECT NUMBER:  
472-2020-085616

DESIGN: DMV DRAWN: JAK

DATE: Mar. 31, 2021

SHEET OF  
**9 26**

File: E:\Projects\Turkey Creek 3rd\Engineering\Phase 4\Str. 20-02-E497\STR PLANS.dwg