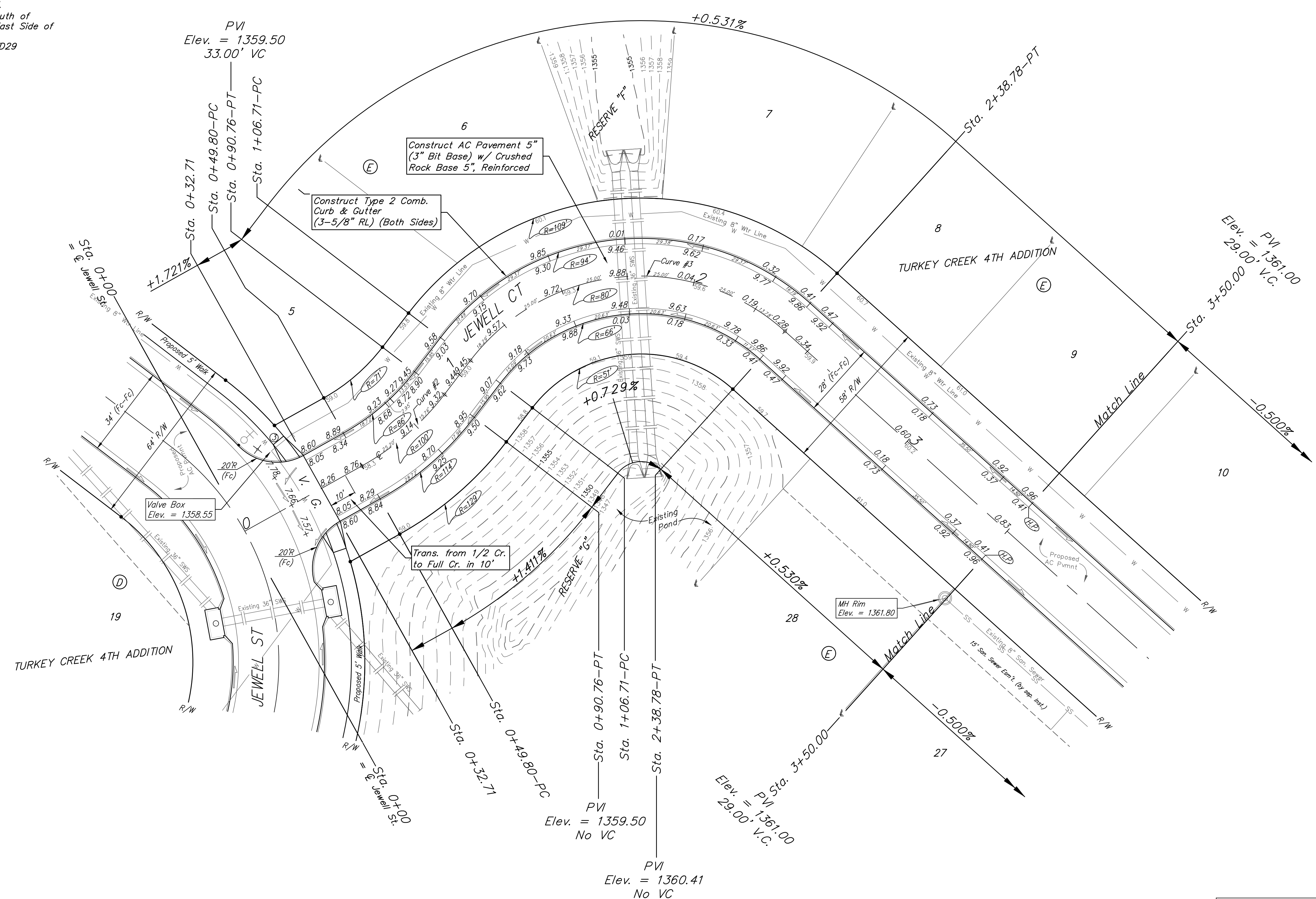
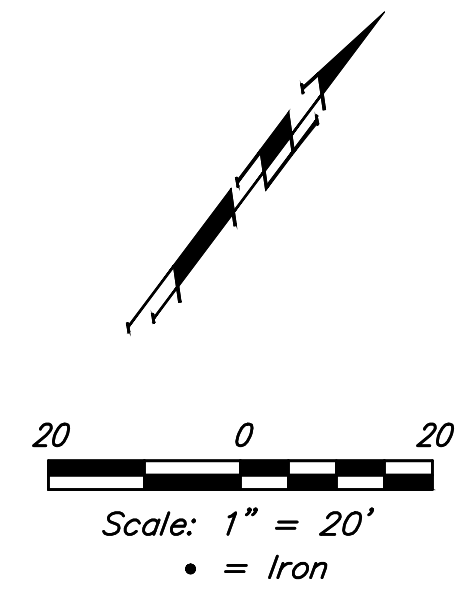


BENCHMARKS:
 135th St. W. & Pawnee
 City of Wichita Benchmark Disc,
 Northeast Corner of Intersection
 On SW Corner of Concrete Base
 of High Line Pole.
 Elev. = 1359.65 NGVD29

City of Wichita Benchmark Disc,
 0.4 Mi. South of Kellogg On
 135th St. W., West Side of
 Concrete Base for High Line
 Pole, West of K.G.&E.
 Substation, 135± South of
 Railroad Tracks On East Side of
 135th St. W.
 Elev. = 1367.77 NGVD29



Curve #2
 Curve Data Based on Centerline
 Rad. = 100' Delta = 23°27'49" Tangent = 20.77'
 Arc = 40.96' L.C. = 40.67' Def./Ft. = 17.18526 Min.

Station	Arc	Face Chord Lengths		Defl.	Total Defl.
		8' Left	8' Right		
0+49.80	-	-	-	0'00"00"	0'00"00"
0+50.00	0.20'	0.16'	0.24'	0'03"26"	0'03"26"
0+75.00	25.00'	19.45'	30.41'	7'09"38"	7'13"04"
0+90.76	15.76'	12.28'	19.20'	4'30"50"	11'43"54"

Curve #3
 Curve Data Based on Centerline
 Rad. = 80' Delta = 94°35'13" Tangent = 86.68'
 Arc = 132.07' L.C. = 117.57' Def./Ft. = 21.48564 Min.

Station	Arc	Face Chord Lengths		Defl.	Total Defl.
		8' Left	8' Right		
1+06.71	-	-	-	0'00"00"	0'00"00"
1+25.00	18.29'	23.27'	13.23'	6'32"58"	6'32"58"
1+50.00	25.00'	31.75'	18.05'	8'57"09"	15'30"07"
1+75.00	25.00'	31.75'	18.05'	8'57"08"	24'27"15"
2+00.00	25.00'	31.75'	18.05'	8'57"09"	33'24"24"
2+25.00	25.00'	31.75'	18.05'	8'57"08"	42'21"32"
2+38.78	13.78'	17.55'	9.98'	4'56"04"	47'17"36"

Baughman Turkey Creek 4th Addition - Phase II
JEWELL CT
 Sta. 0+00 to Sta. 3+50.00

Baughman Company, P.A. 315 Ellis St. Wichita, KS 67211 P 316-262-7271 F 316-262-0149
 ENGINEERING | SURVEYING | PLANNING | LANDSCAPE ARCHITECTURE

PROJECT NUMBER: 472-2020-085619
 DESIGN: DMV
 DRAWN: JAK
 APPROVED: [Signature]
 DATE: 8/13/2020

REVISIONS:

SCALE: Noted
 SHEET: **10 OF 23**

Roll type curb & gutter to be constructed on the pavement on this sheet. Top of curb elevation are given for full height curb.