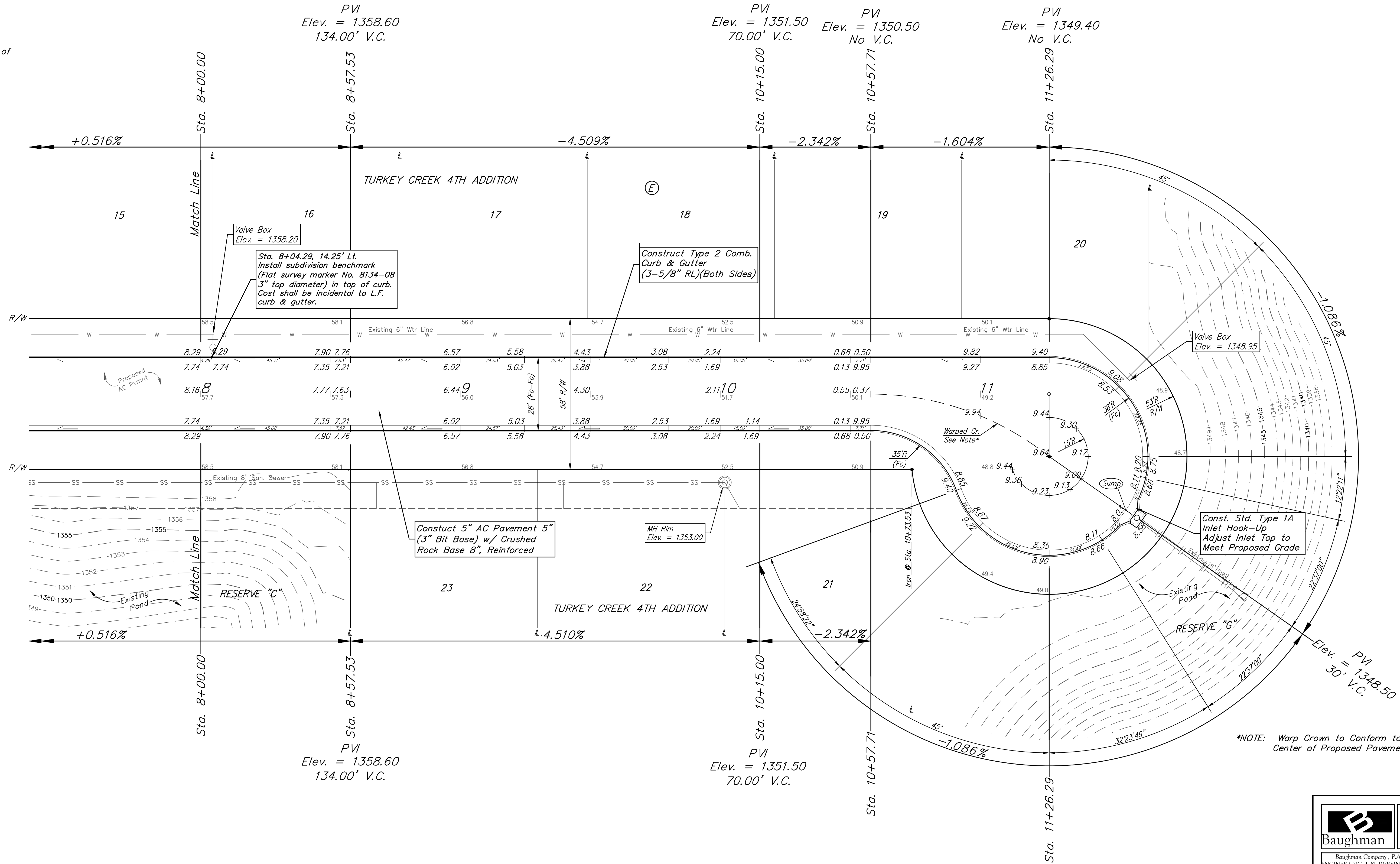
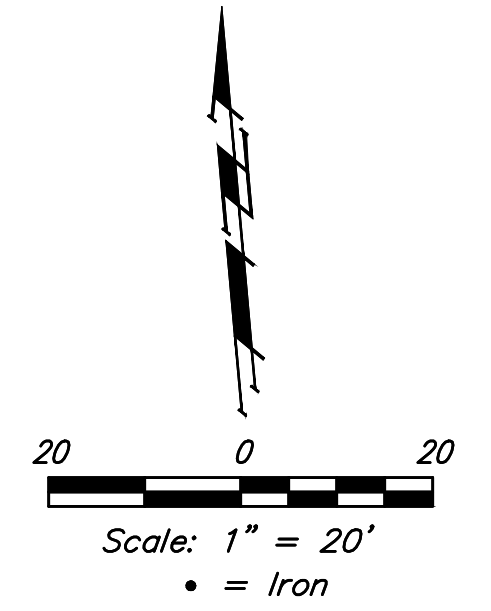


**BENCHMARKS:**  
 135th St. W. & Pawnee  
 City of Wichita Benchmark Disc,  
 Northeast Corner of Intersection  
 On SW Corner of Concrete Base  
 of High Line Pole.  
 Elev. = 1359.65 NGVD29

City of Wichita Benchmark Disc,  
 0.4 Mi. South of Kellogg On  
 135th St. W., West Side of  
 Concrete Base for High Line  
 Pole, West of K.G.&E.  
 Substation, 135± South of  
 Railroad Tracks On East Side of  
 135th St. W.  
 Elev. = 1367.77 NGVD29



**SUBDIVISION BENCHMARKS**

STREET & STATION	LOCATION DESCRIPTION	ELEVATION
Jewell 4+55.82, 17.25' Lt.	Adjacent to Fire Hydrant at the South End of the West Return Jewell & Jewell Ct, SE Cor., Lot 5, Blk E, Turkey Creek 4th Addn.	
Jewell Ct 8+04.29, 14.25' Lt.	Adjacent to Fire Hydrant West of the SW Cor., Lot 16, Blk E, Turkey Creek 4th Addn.	

**VALVE LOCATION TABLE**

VALVE NUMBER	STREET	BASELINE STATION	OFFSET DISTANCE	OFFSET DIRECTION
1	Jewell	0+52.00	25'	Lt.
2	Jewell	1+98.68	23'	Lt.
3	Jewell	4+63.25	27'	Lt.
4	Jewell	6+15.63	26'	Rt.

Roll type curb & gutter to be constructed on the pavement on this sheet.  
 Top of curb elevation are given for full height curb.

\*NOTE: Warp Crown to Conform to the Approx. Center of Proposed Pavement.

	Turkey Creek 4th Addition - Phase II	
	<b>JEWELL CT</b> Sta. 8+00.00 to Sta. 11+26.29	
<small>Baughman Company, P.A. 315 Ellis St. Wichita, KS 67211 P 316-262-7271 F 316-262-0149          ENGINEERING   SURVEYING   PLANNING   LANDSCAPE ARCHITECTURE</small>		
PROJECT NUMBER 472-2020-085619	DESIGN DMV	DRAWN JAK
REVISIONS:	APPROVED 8/13/2020	DATE 8/13/2020
SCALE Noted		SHEET <b>12 OF 23</b>