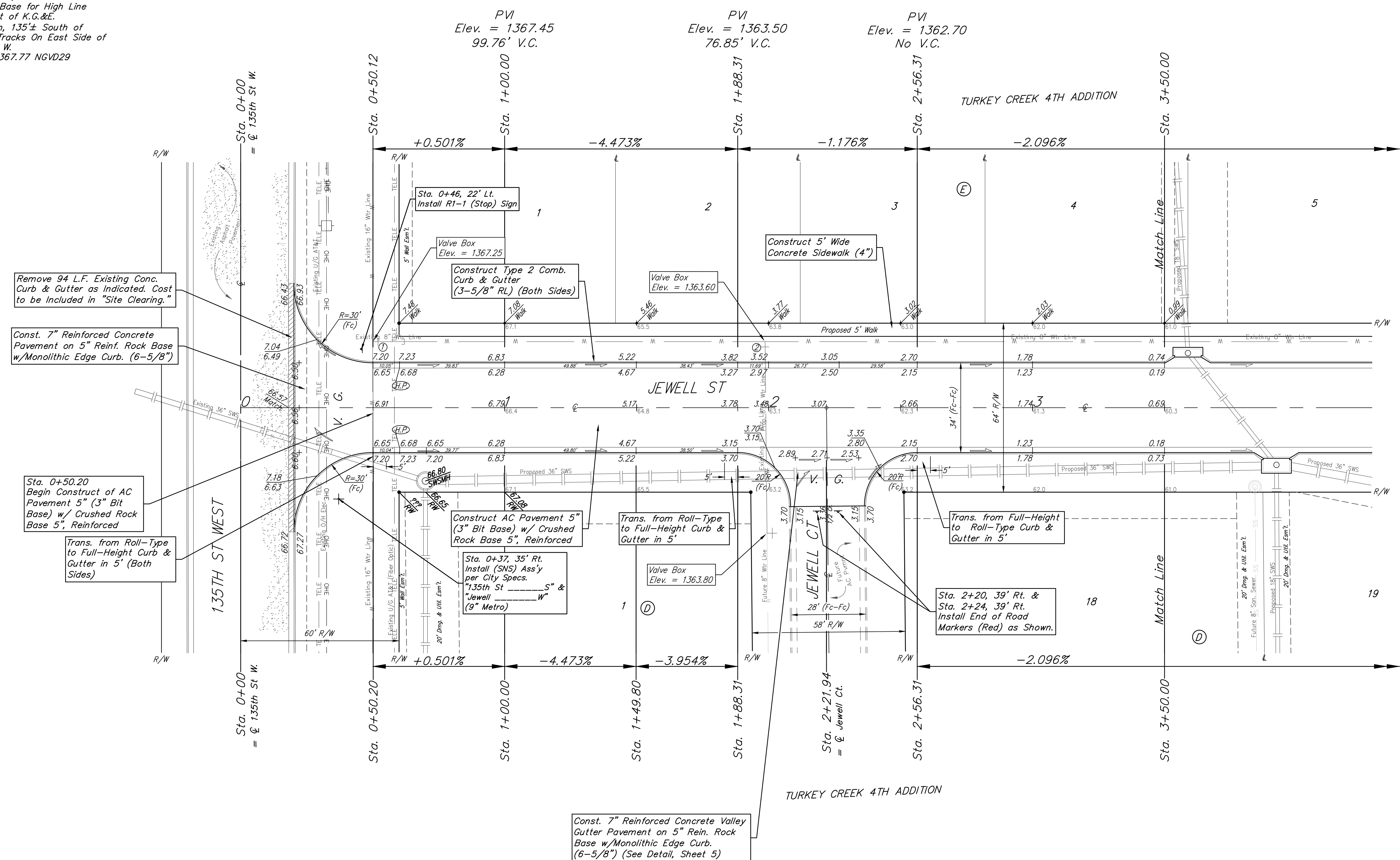
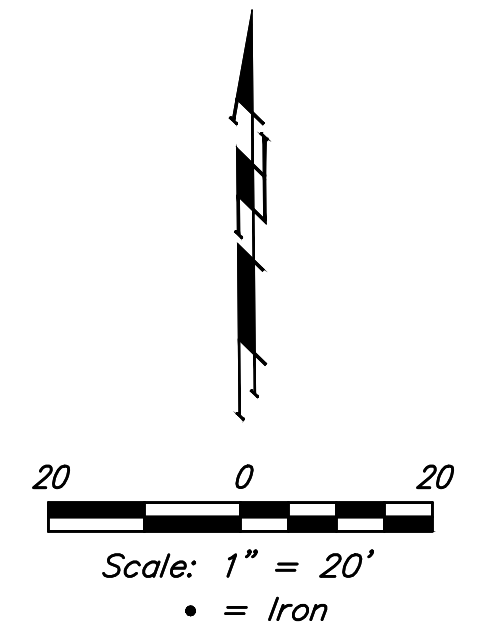


BENCHMARKS:
 135th St. W. & Pawnee
 City of Wichita Benchmark Disc,
 Northeast Corner of Intersection
 On SW Corner of Concrete Base
 of High Line Pole.
 Elev. = 1359.65 NGVD29

City of Wichita Benchmark Disc,
 0.4 Mi. South of Kellogg On
 135th St. W., West Side of
 Concrete Base for High Line
 Pole, West of K.G.&E.
 Substation, 135± South of
 Railroad Tracks On East Side of
 135th St. W.
 Elev. = 1367.77 NGVD29



Remove 94 L.F. Existing Conc. Curb & Gutter as Indicated. Cost to be Included in "Site Clearing."

Const. 7" Reinforced Concrete Pavement on 5" Reinf. Rock Base w/Monolithic Edge Curb. (6-5/8")

Sta. 0+50.20 Begin Construct of AC Pavement 5" (3" Bit Base) w/ Crushed Rock Base 5", Reinforced

Trans. from Roll-Type to Full-Height Curb & Gutter in 5' (Both Sides)

PVI
 Elev. = 1367.45
 99.76' V.C.

PVI
 Elev. = 1363.50
 76.85' V.C.

PVI
 Elev. = 1362.70
 No V.C.

Const. 7" Reinforced Concrete Valley Gutter Pavement on 5" Rein. Rock Base w/Monolithic Edge Curb. (6-5/8") (See Detail, Sheet 5)

Roll type curb & gutter to be constructed on the pavement on this sheet. Top of curb elevation are given for full height curb.

	Turkey Creek 4th Addition - Phase II	
	JEWELL Sta. 0+00 to Sta. 3+50.00	
<small>Baughman Company, P.A. 315 Ellis St. Wichita, KS 67211 P 316-262-7271 F 316-262-0149 ENGINEERING SURVEYING PLANNING LANDSCAPE ARCHITECTURE</small>		
PROJECT NUMBER 472-2020-085619	DESIGN DMV	DRAWN JAK
REVISIONS:	APPROVED DATE 8/13/2020	SCALE Noted
		SHEET 8 OF 23