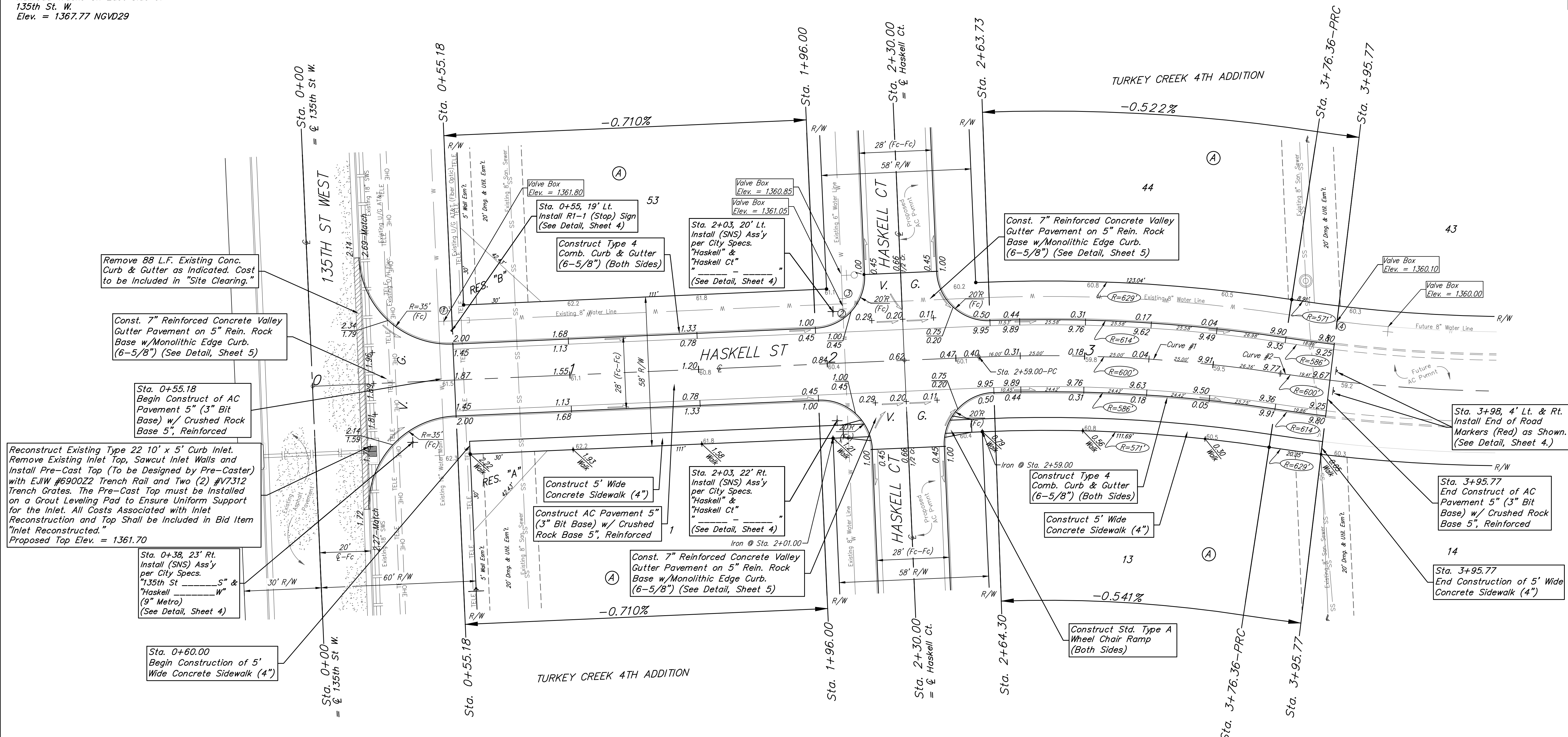
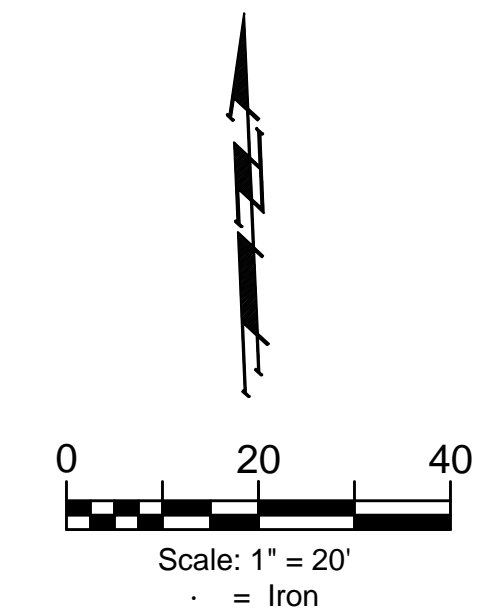


BENCHMARKS:
 135th St. W. & Pawnee
 City of Wichita Benchmark Disc,
 Northeast Corner of Intersection
 On SW Corner of Concrete Base
 of High Line Pole.
 Elev. = 1359.65 NGVD29

City of Wichita Benchmark Disc,
 0.4 Mi. South of Kellogg On
 135th St. W., West Side of
 Concrete Base for High Line
 Pole, West of K.G.&E.
 Substation, 135± South of
 Railroad Tracks On East Side of
 135th St. W.
 Elev. = 1367.77 NGVD29



Remove 88 L.F. Existing Conc. Curb & Gutter as Indicated. Cost to be Included in "Site Clearing."

Const. 7" Reinforced Concrete Valley Gutter Pavement on 5" Rein. Rock Base w/Monolithic Edge Curb. (6-5/8") (See Detail, Sheet 5)

Sta. 0+55.18 Begin Construct of AC Pavement 5" (3" Bit Base) w/ Crushed Rock Base 5", Reinforced

Reconstruct Existing Type 22 10' x 5' Curb Inlet. Remove Existing Inlet Top, Sawcut Inlet Walls and Install Pre-Cast Top (To be Designed by Pre-Caster) with EJIW #690022 Trench Rail and Two (2) #V7312 Trench Grates. The Pre-Cast Top must be installed on a Grout Leveling Pad to Ensure Uniform Support for the Inlet. All Costs Associated with Inlet Reconstruction and Top Shall be Included in Bid Item "Inlet Reconstructed." Proposed Top Elev. = 1361.70

Sta. 0+38, 23' Rt. Install (SNS) Ass'y per City Specs. "135th St" 5" & "Haskell" 9" Metro (See Detail, Sheet 4)

Sta. 0+60.00 Begin Construction of 5' Wide Concrete Sidewalk (4")

Sta. 0+55, 19' Lt. Install R1-1 (Stop) Sign (See Detail, Sheet 4)

Construct Type 4 Comb. Curb & Gutter (6-5/8") (Both Sides)

Sta. 2+03, 20' Lt. Install (SNS) Ass'y per City Specs. "Haskell" & "Haskell Ct" (See Detail, Sheet 4)

Construct 5' Wide Concrete Sidewalk (4")

Construct AC Pavement 5" (3" Bit Base) w/ Crushed Rock Base 5", Reinforced

Sta. 2+03, 22' Rt. Install (SNS) Ass'y per City Specs. "Haskell" & "Haskell Ct" (See Detail, Sheet 4)

Const. 7" Reinforced Concrete Valley Gutter Pavement on 5" Rein. Rock Base w/Monolithic Edge Curb. (6-5/8") (See Detail, Sheet 5)

Const. 7" Reinforced Concrete Valley Gutter Pavement on 5" Rein. Rock Base w/Monolithic Edge Curb. (6-5/8") (See Detail, Sheet 5)

Construct Type 4 Comb. Curb & Gutter (6-5/8") (Both Sides)

Construct 5' Wide Concrete Sidewalk (4")

Sta. 3+98, 4' Lt. & Rt. Install End of Road Markers (Red) as Shown. (See Detail, Sheet 4.)

Sta. 3+95.77 End Construct of AC Pavement 5" (3" Bit Base) w/ Crushed Rock Base 5", Reinforced

Sta. 3+95.77 End Construction of 5' Wide Concrete Sidewalk (4")

Curve #1
 Curve Data Based on Centerline

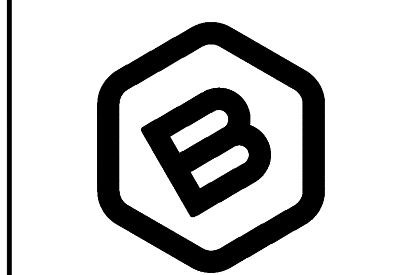
Rad. = 600' Delta = 117°26' Tangent = 58.87'
 Arc = 117.36' L.C. = 117.17' Def./Ft. = 2.86483 Min.

Station	Arc	Face Chord Lengths		Defl.	Total Defl.
		8' Left	8' Right		
2+59.00	-	-	-	0°00'00"	0°00'00"
2+63.73	4.73'	4.90'	4.56'	0°13'33"	0°13'33"
2+64.30	0.57'	0.59'	0.55'	0°01'38"	0°15'11"
2+75.00	10.70'	11.09'	10.31'	0°30'39"	0°45'50"
3+00.00	25.00'	25.92'	24.08'	1°11'37"	1°57'27"
3+25.00	25.00'	25.92'	24.08'	1°11'38"	3°09'05"
3+50.00	25.00'	25.92'	24.08'	1°11'37"	4°20'42"
3+75.00	25.00'	25.92'	24.08'	1°11'37"	5°32'19"
3+76.36	1.36'	1.41'	1.31'	0°03'54"	5°36'13"

Curve #2
 Curve Data Based on Centerline

Rad. = 600' Delta = 151°13' Tangent = 9.71'
 Arc = 19.41' L.C. = 19.41' Def./Ft. = 2.86493 Min.

Station	Arc	Face Chord Lengths		Defl.	Total Defl.
		8' Left	8' Right		
3+76.36	-	-	-	0°00'00"	0°00'00"
3+95.77	19.41'	18.70'	20.12'	0°55'37"	0°55'37"



BAUGHMAN COMPANY

315 Ellis St.
 Wichita, KS 67211
 316-262-7271
 BaughmanCo.com

TURKEY CREEK 4TH ADDITION
 PHASE 1A

HASKELL

Street Paving Improvements
 Sta. 0+00 to Sta. 3+76.36

PROJECT NUMBER:
 472-2020-085617

DESIGN: DMV DRAWN: JAK

DATE: Apr. 2, 2021

SHEET OF
 6 22

File: E:\Projects\Turkey Creek 4th_Engineering\Phase 1A\Str_20-01-E457\STR PLANS.dwg