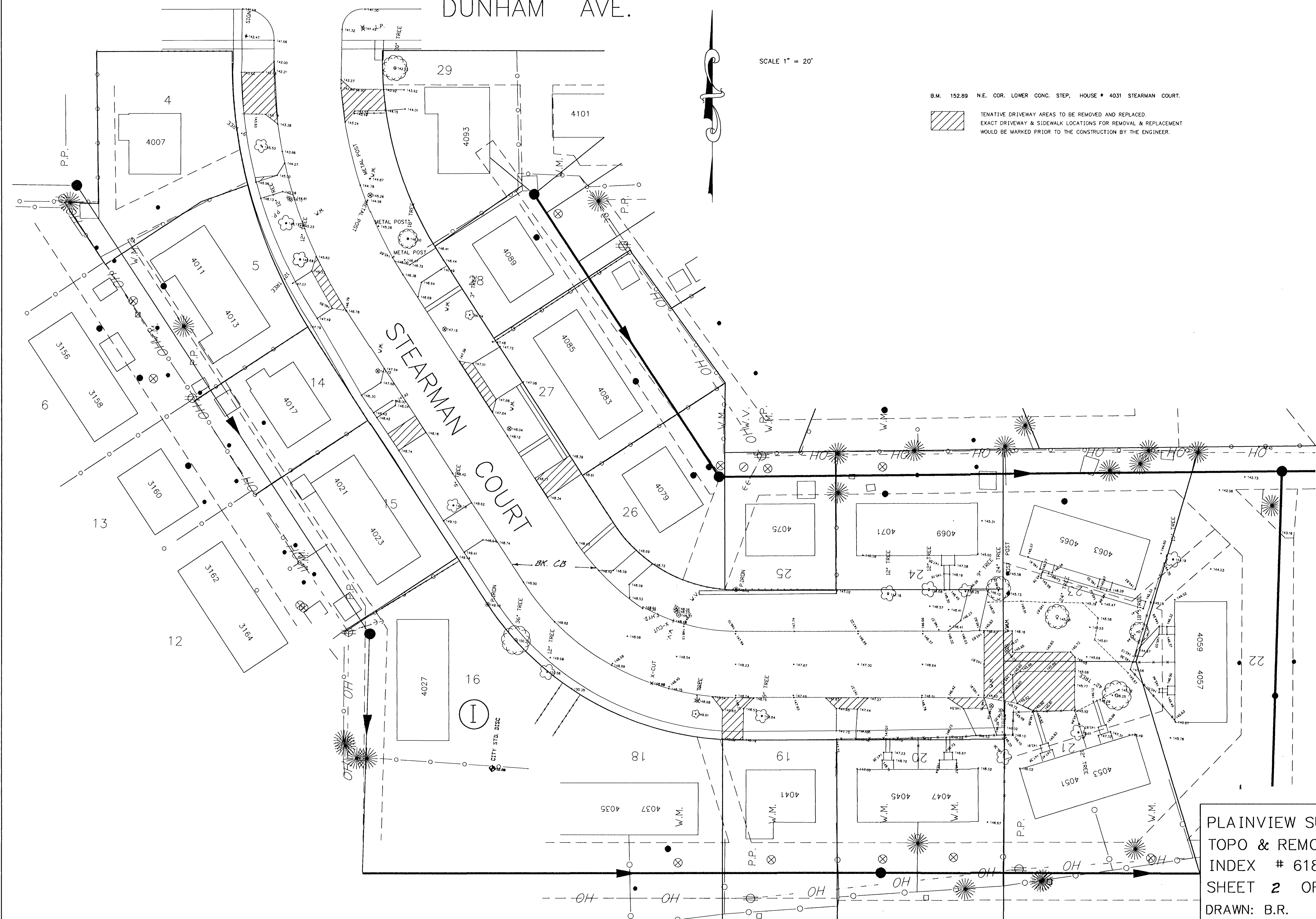


DUNHAM AVE.

SCALE 1" = 20'

B.M. 152.89 N.E. COR. LOWER CONC. STEP, HOUSE # 4031 STEARMAN COURT.

TENTATIVE DRIVEWAY AREAS TO BE REMOVED AND REPLACED.
EXACT DRIVEWAY & SIDEWALK LOCATIONS FOR REMOVAL & REPLACEMENT
WOULD BE MARKED PRIOR TO THE CONSTRUCTION BY THE ENGINEER.



PLAINVIEW SUBDIVISION #2
TOPO & REMOVAL PLANS
INDEX # 618058
SHEET 2 OF 12
DRAWN: B.R. DESIGN: B.R.