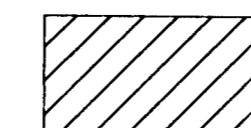
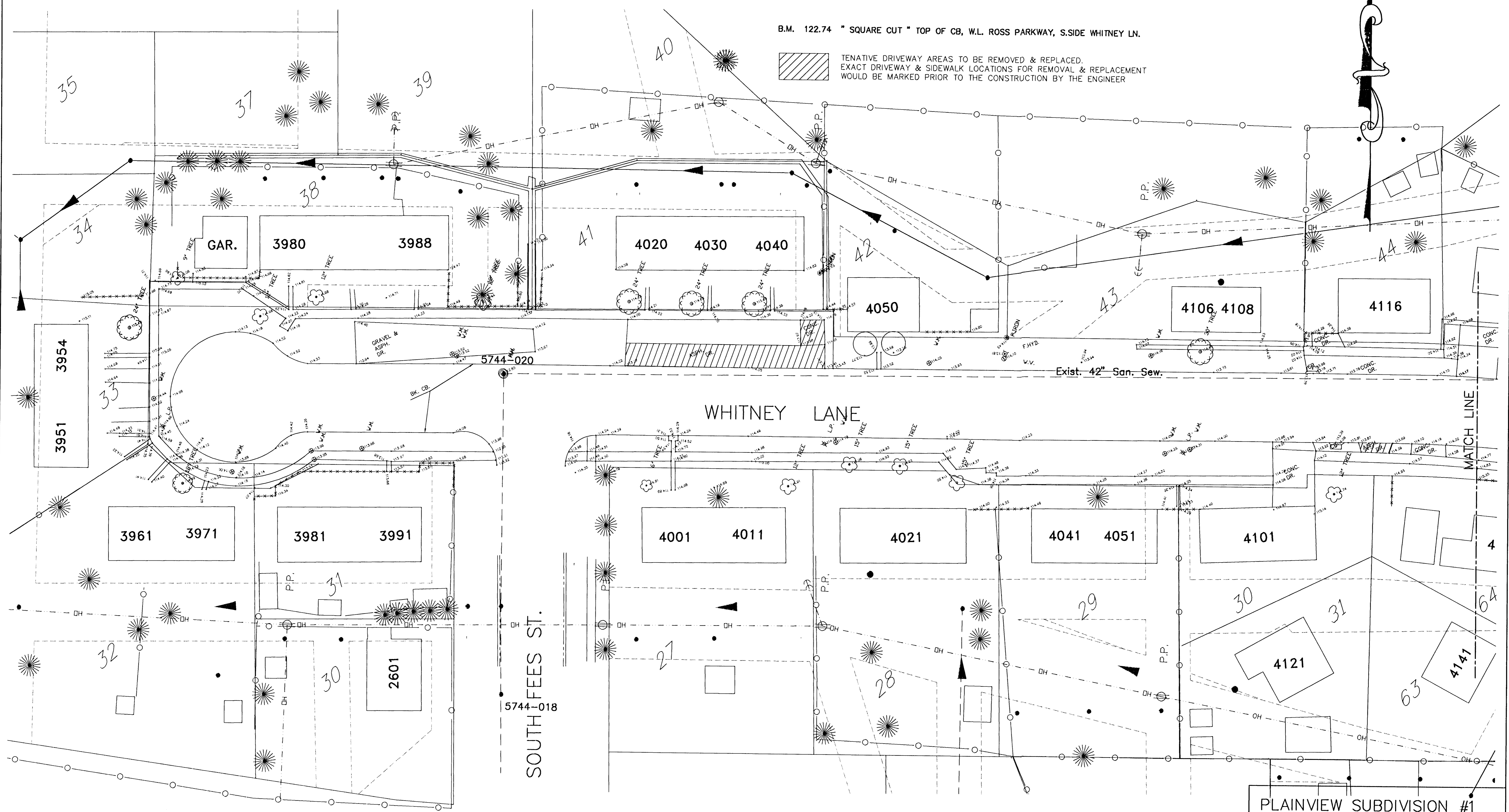
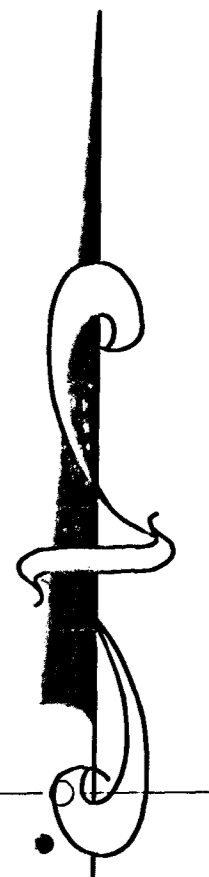


PLANEVIEW SUBDIVISION NO. 1

B.M. 122.74 " SQUARE CUT " TOP OF CB, W.L. ROSS PARKWAY, S.SIDE WHITNEY LN.

 TENTATIVE DRIVEWAY AREAS TO BE REMOVED & REPLACED.
EXACT DRIVEWAY & SIDEWALK LOCATIONS FOR REMOVAL & REPLACEMENT
WOULD BE MARKED PRIOR TO THE CONSTRUCTION BY THE ENGINEER



PLAINVIEW SUBDIVISION #1
 TOPO & REMOVAL PLANS
 INDEX # 618058
 SHEET 4 OF 12
 DRAWN: B.R. DESIGN: B.R.