

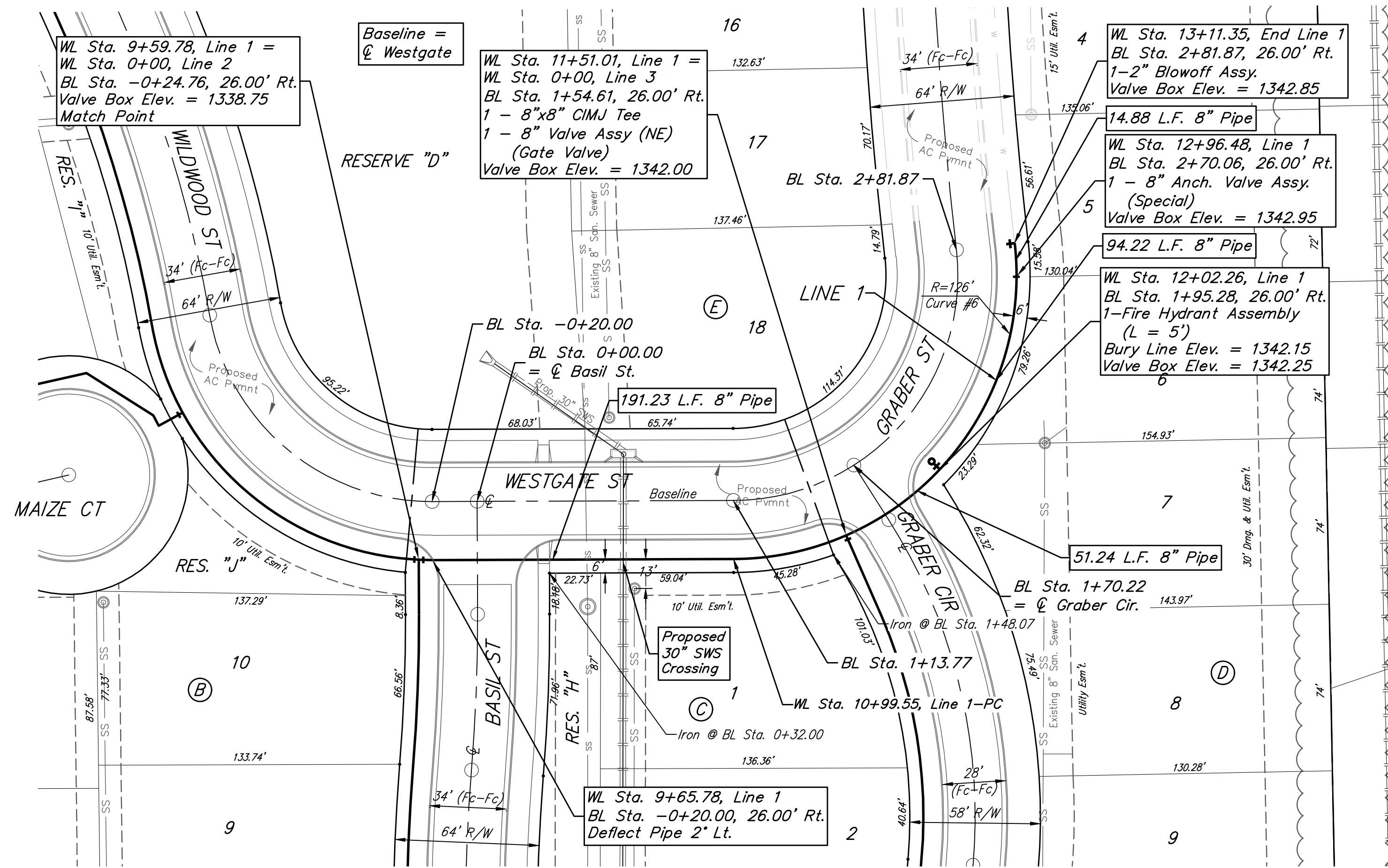
BENCHMARKS:
 CUT OFF "T"-POST, DOWN 0.25'
 13.5' WEST OF POWER POLE
 30' SOUTH OF FIRE HYDRANT
 +/- 200' SOUTH OF CENTERLINE
 DRIVE TO HOUSE # 2816 S MAIZE RD.
 ELEV. = 1328.386 (NAVD 88)

SQUARE CUT WITH + IN SW WINGWALL
 OF THE SOUTHERNMOST OF THREE
 CONCRETE DITCH CHECKS
 +/- 1125' WEST OF CENTERLINE S.
 MAIZE RD, BEHIND HOUSE #2951 S
 MAIZE RD.
 ELEV. = 1332.383 (NAVD88)

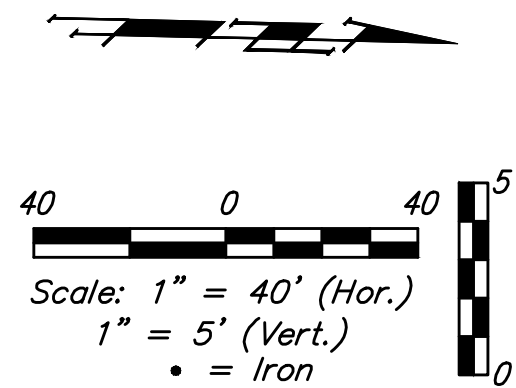
SCHULTE-JOHNSON
 2ND ADDITION

NOTE: Maintain 10 ft. of
 horizontal separation (outside
 dimension to outside dimension)
 between the water lines and
 sanitary sewer lines and manholes.

Pipe layout is shown to be
 circular for radii under 300'.
 Contractor may use short pipe
 lengths, high deflection couplers,
 and manufacturer recommended
 pipe deflections and pipe bending
 to meet planned alignment.



SCHULTE-JOHNSON
 2ND ADDITION



Curve #1
 Curve Data Based on Waterline
 Rad. = 795' Delta = 6°50'12" Tangent = 47.49'
 Arc = 94.86' L.C. = 94.80' Def./Ft. = 2.16213 Min.

Station	Arc	8' Left	Defl.	Total Defl.
1+66.97	-	-	0'00'00"	0'00'00"
1+75.00	8.03'	7.95'	0'17'22"	0'17'22"
2+00.00	25.00'	24.75'	0'54'03"	1'11'25"
2+14.40	14.40'	14.26'	0'31'08"	1'42'33"
2+25.00	10.60'	10.49'	0'22'55"	2'05'28"
2+50.00	25.00'	24.75'	0'54'03"	2'59'31"
2+61.83	11.83'	11.71'	0'25'35"	3'25'06"

Curve #2
 Curve Data Based on Waterline
 Rad. = 847' Delta = 13°40'24" Tangent = 101.55'
 Arc = 202.13' L.C. = 201.65' Def./Ft. = 2.02939 Min.

Station	Arc	8' Left	Defl.	Total Defl.
2+61.83	-	-	0'00'00"	0'00'00"
2+75.00	13.17'	13.29'	0'26'44"	0'26'44"
3+00.00	25.00'	25.24'	0'50'44"	1'17'28"
3+25.00	25.00'	25.24'	0'50'44"	2'08'12"
3+50.00	25.00'	25.24'	0'50'44"	2'58'56"
3+62.90	12.90'	13.02'	0'26'11"	3'25'07"
3+75.00	12.10'	12.21'	0'24'33"	3'49'40"
4+00.00	25.00'	25.24'	0'50'44"	4'40'24"
4+25.00	25.00'	25.24'	0'50'44"	5'31'08"
4+50.00	25.00'	25.24'	0'50'44"	6'21'52"
4+63.96	13.96'	14.09'	0'28'20"	6'50'12"

Curve #3
 Curve Data Based on Waterline
 Rad. = 795' Delta = 15°17'15" Tangent = 106.69'
 Arc = 212.12' L.C. = 211.49' Def./Ft. = 2.16210 Min.

Station	Arc	8' Left	Defl.	Total Defl.
4+63.96	-	-	0'00'00"	0'00'00"
4+75.00	11.04'	10.93'	0'23'52"	0'23'52"
5+00.00	25.00'	24.75'	0'54'03"	1'17'55"
5+25.00	25.00'	24.75'	0'54'03"	2'11'58"
5+50.00	25.00'	24.75'	0'54'04"	3'06'02"
5+70.02	20.02'	19.82'	0'43'17"	3'49'19"
5+75.00	4.98'	4.93'	0'10'46"	4'00'05"
6+00.00	25.00'	24.75'	0'54'03"	4'54'08"
6+25.00	25.00'	24.75'	0'54'03"	5'48'11"
6+50.00	25.00'	24.75'	0'54'03"	6'42'14"
6+75.00	25.00'	24.75'	0'54'03"	7'36'17"
6+76.08	1.08'	1.07'	0'02'20"	7'38'37"

Curve #4
 Curve Data Based on Waterline
 Rad. = 847' Delta = 13°00'32" Tangent = 96.57'
 Arc = 192.31' L.C. = 191.90' Def./Ft. = 2.02936 Min.

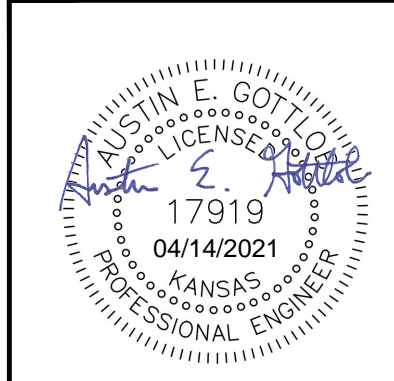
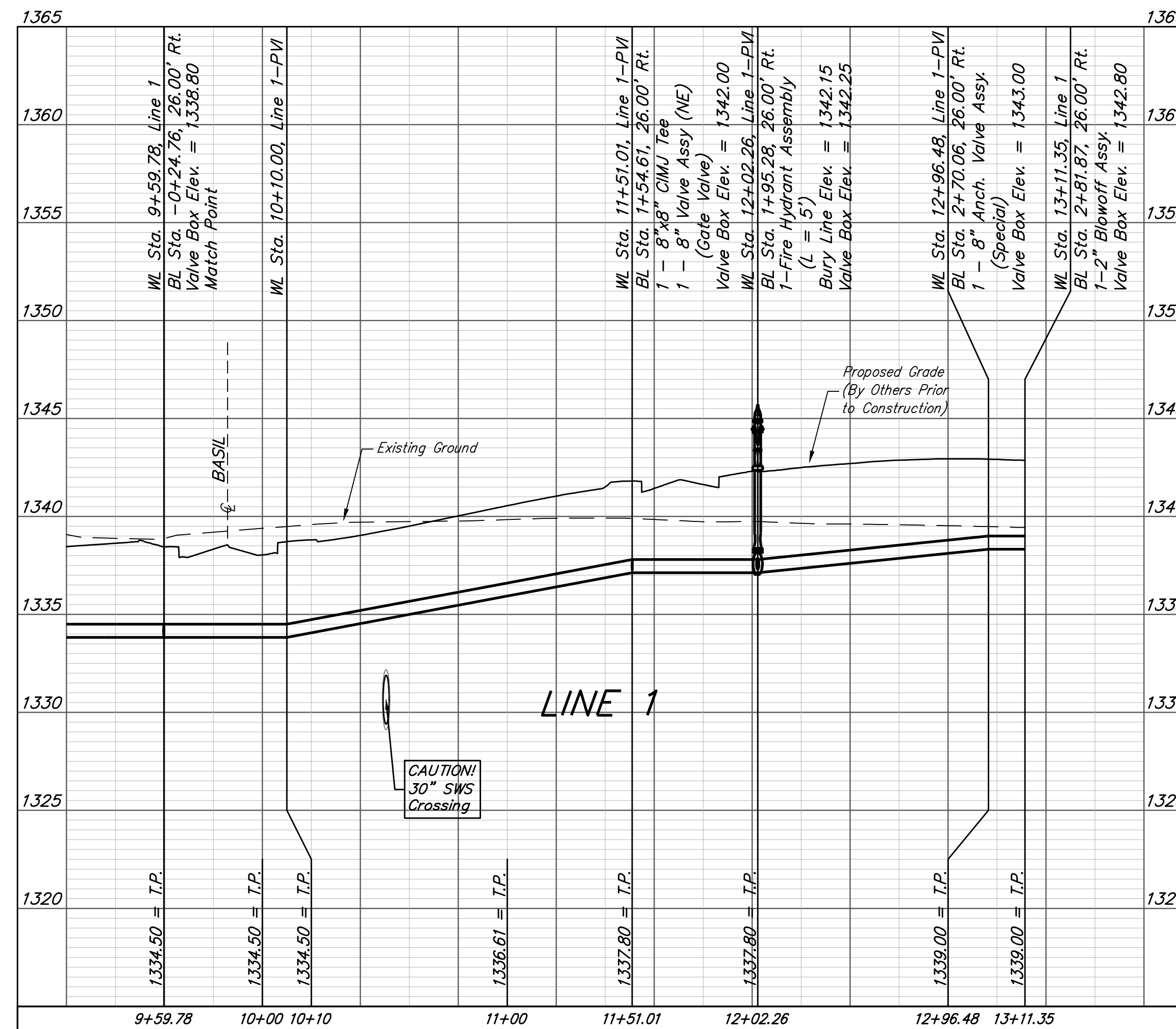
Station	Arc	8' Left	Defl.	Total Defl.
6+76.08	-	-	0'00'00"	0'00'00"
7+00.00	23.92'	24.15'	0'48'33"	0'48'33"
7+25.00	25.00'	25.24'	0'50'44"	1'39'17"
7+50.00	25.00'	25.24'	0'50'44"	2'30'01"
7+72.24	22.24'	22.45'	0'45'08"	3'15'09"
7+75.00	2.76'	2.79'	0'05'36"	3'20'45"
8+00.00	25.00'	25.24'	0'50'44"	4'11'29"
8+25.00	25.00'	25.24'	0'50'44"	5'02'13"
8+50.00	25.00'	25.24'	0'50'44"	5'52'57"
8+68.39	18.39'	18.56'	0'37'19"	6'30'16"

Curve #5
 Curve Data Based on Waterline
 Rad. = 795' Delta = 4°49'59" Tangent = 33.55'
 Arc = 67.06' L.C. = 67.04' Def./Ft. = 2.16212 Min.

Station	Arc	8' Left	Defl.	Total Defl.
8+68.39	-	-	0'00'00"	0'00'00"
8+75.00	6.61'	6.54'	0'14'17"	0'14'17"
9+00.00	25.00'	24.75'	0'54'04"	1'08'21"
9+01.92	1.92'	1.90'	0'04'09"	1'12'30"
9+25.00	23.08'	22.85'	0'49'54"	2'02'24"
9+35.45	10.45'	10.34'	0'22'35"	2'24'59"

Curve #6
 Curve Data Based on Waterline
 Rad. = 126' Delta = 96°18'49" Tangent = 140.71'
 Arc = 211.80' L.C. = 187.73' Def./Ft. = 13.64215 Min.

Station	Arc	8' Right	Defl.	Total Defl.
10+99.55	-	-	0'00'00"	0'00'00"
11+00.00	0.45'	0.48'	0'06'08"	0'06'08"
11+25.00	25.00'	26.54'	5'41'04"	5'47'12"
11+50.00	25.00'	26.54'	5'41'03"	11'28'15"
11+75.00	25.00'	26.54'	5'41'03"	17'09'18"
12+00.00	25.00'	26.54'	5'41'03"	22'50'21"
12+05.45	5.45'	5.80'	1'14'21"	24'04'42"
12+25.00	19.55'	20.77'	4'26'42"	28'31'24"
12+50.00	25.00'	26.54'	5'41'04"	34'12'28"
12+75.00	25.00'	26.54'	5'41'03"	39'53'31"
13+00.00	25.00'	26.54'	5'41'03"	45'34'34"
13+11.35	11.35'	12.07'	2'34'51"	48'09'25"



SCHULTE-JOHNSON 2ND
 ADD. - PHASE I

LINE 1

WATER DISTRIBUTION
 SYSTEM

PROJECT NUMBER:
 448-2019-009457

DESIGN: AEG DRAWN: HJW

DATE: April 12, 2021

SHEET 5 OF 18

File: C:\Projects\Schulte-Johnson 2nd Addition\Engineering\Phase 1\WTRWTR Plans.dwg