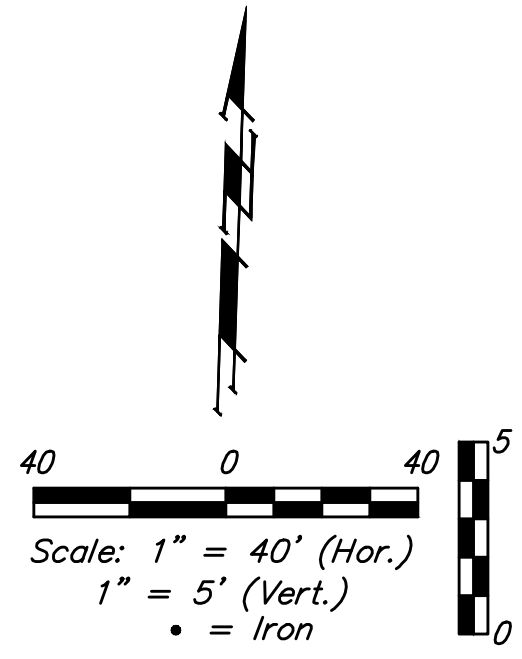


BENCHMARKS:
 CUT OFF "T"-POST, DOWN 0.25'
 13.5' WEST OF POWER POLE
 30' SOUTH OF FIRE HYDRANT
 +/- 200' SOUTH OF CENTERLINE
 DRIVE TO HOUSE # 2816 S MAIZE RD.
 ELEV. = 1328.386 (NAVD 88)

SQUARE CUT WITH + IN SW WINGWALL
 OF THE SOUTHERNMOST OF THREE
 CONCRETE DITCH CHECKS
 +/- 1125' WEST OF CENTERLINE S.
 MAIZE RD, BEHIND HOUSE #2951 S
 MAIZE RD.
 ELEV. = 1332.383 (NAVD88)

SCHULTE-JOHNSON
 2ND ADDITION

SCHULTE-JOHNSON
 2ND ADDITION



Curve #11
 Curve Data Based on Waterline
 Rad. = 1494' Delta = 9°56'42" Tangent = 129.99'
 Arc = 259.32' L.C. = 258.99' Def./Ft. = 1.15051 Min.

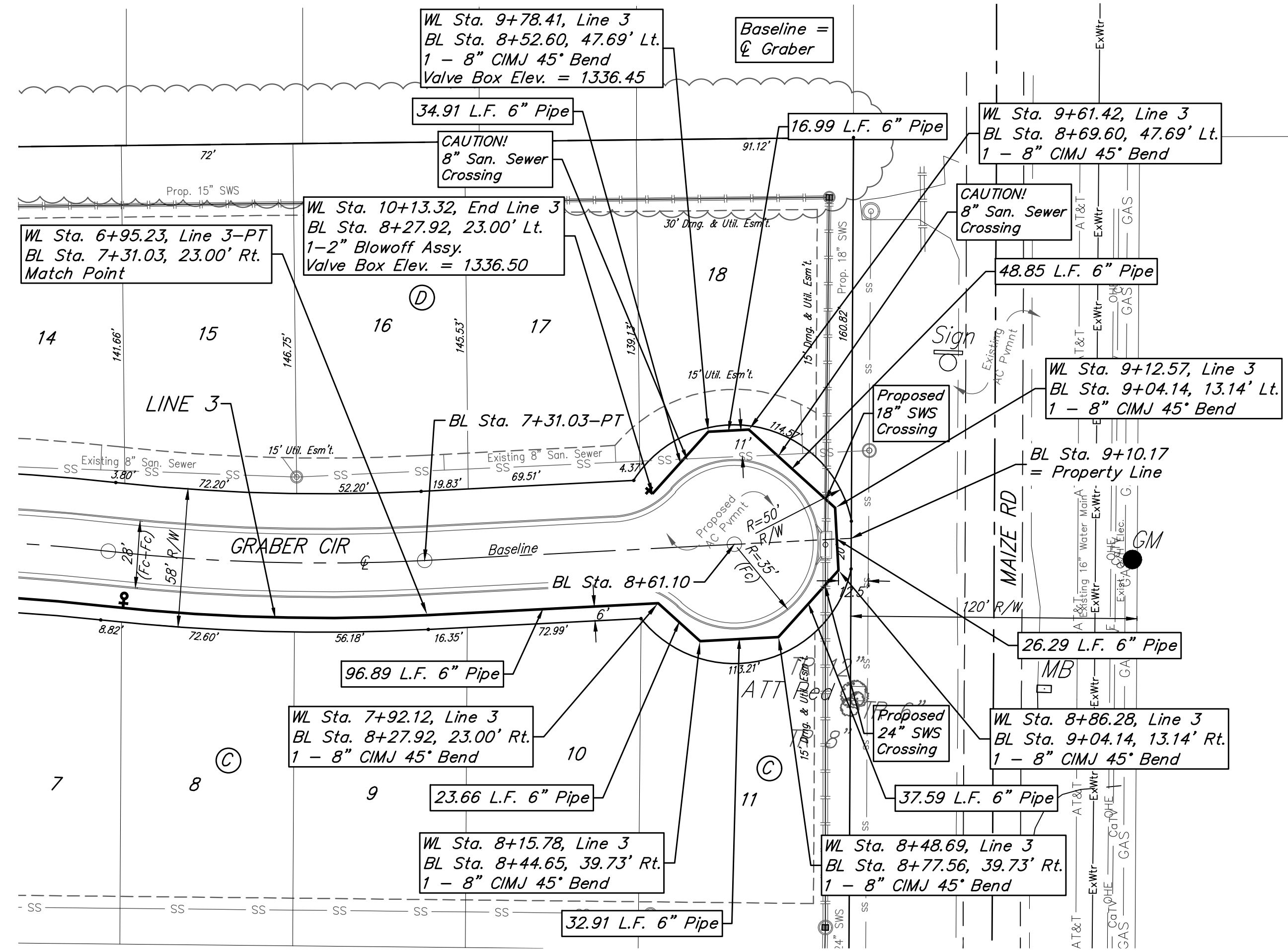
Station	Arc	Chord Lengths	8' Right	Defl.	Total Defl.
1+50.25	-	-	-	0'00"00"	0'00"00"
1+75.00	24.75'	24.88'	24.88'	0'28"29"	0'28"29"
2+00.00	25.00'	25.00'	25.13'	0'28"45"	0'57"14"
2+25.00	25.00'	25.13'	25.13'	0'28"46"	1'26"00"
2+50.00	25.00'	25.13'	25.13'	0'28"46"	1'54"46"
2+75.00	25.00'	25.13'	25.13'	0'28"46"	2'23"32"
2+79.91	4.91'	4.94'	4.94'	0'05"39"	2'29"11"
3+00.00	20.09'	20.20'	20.20'	0'23"06"	2'52"17"
3+25.00	25.00'	25.13'	25.13'	0'28"46"	3'21"03"
3+50.00	25.00'	25.13'	25.13'	0'28"46"	3'49"49"
3+75.00	25.00'	25.13'	25.13'	0'28"46"	4'18"35"
4+00.00	25.00'	25.13'	25.13'	0'28"45"	4'47"20"
4+09.57	9.57'	9.62'	9.62'	0'11"01"	4'58"21"

Curve #12
 Curve Data Based on Waterline
 Rad. = 798' Delta = 10°42'02" Tangent = 74.73'
 Arc = 149.04' L.C. = 148.82' Def./Ft. = 2.15390 Min.

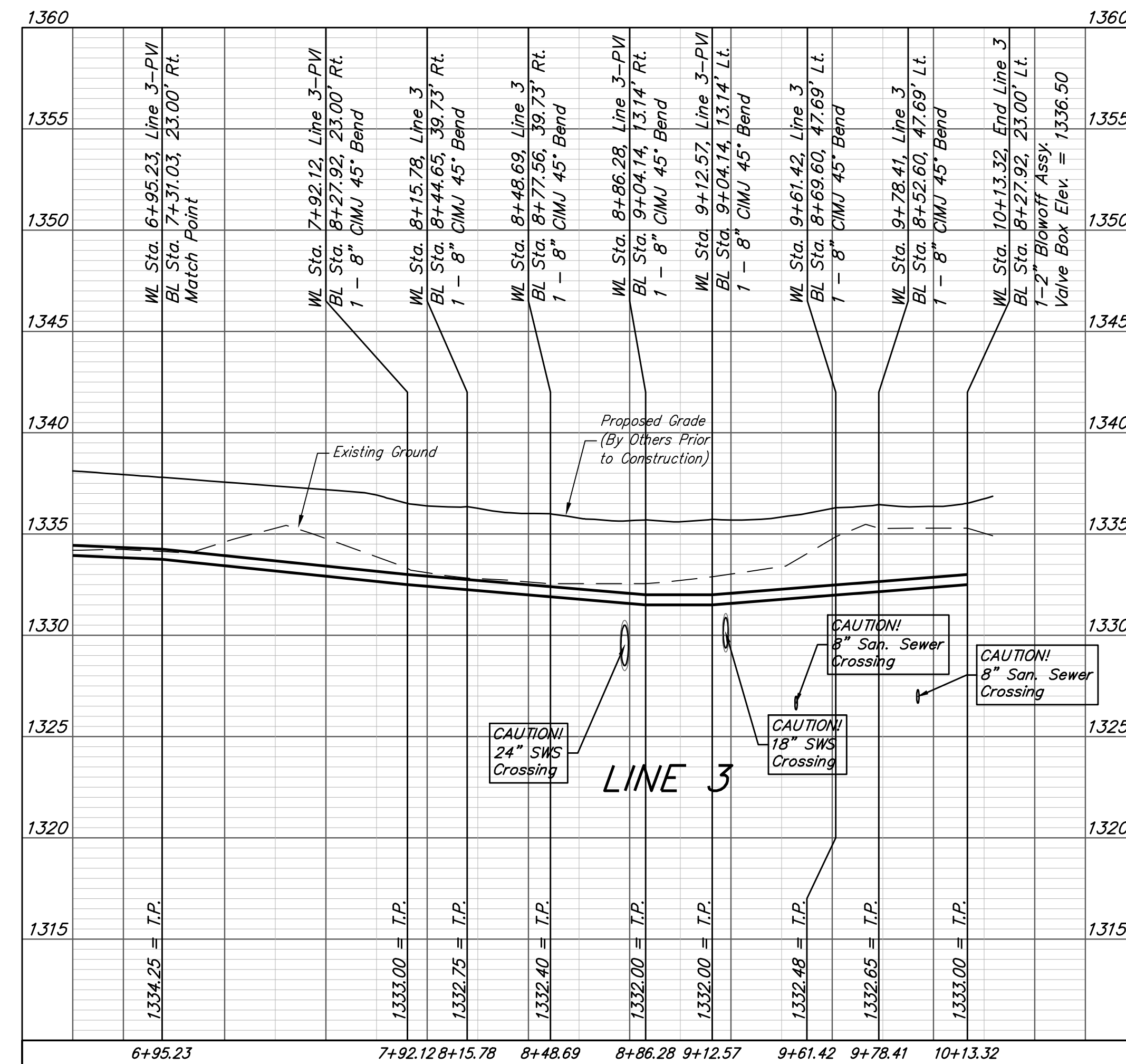
Station	Arc	Chord Lengths	8' Right	Defl.	Total Defl.
4+09.57	-	-	-	0'00"00"	0'00"00"
4+25.00	15.43'	15.27'	15.27'	0'33"14"	0'33"14"
4+50.00	25.00'	24.75'	24.75'	0'53"51"	1'27"05"
4+75.00	25.00'	24.75'	24.75'	0'53"51"	2'20"56"
4+84.09	9.09'	9.00'	9.00'	0'19"34"	2'40"30"
5+00.00	15.91'	15.75'	15.75'	0'34"17"	3'14"47"
5+25.00	25.00'	24.75'	24.75'	0'53"50"	4'08"37"
5+50.00	25.00'	24.75'	24.75'	0'53"51"	5'02"28"
5+58.61	8.61'	8.52'	8.52'	0'18"33"	5'21"01"

Curve #13
 Curve Data Based on Waterline
 Rad. = 844' Delta = 9°16'29" Tangent = 68.46'
 Arc = 136.62' L.C. = 136.47' Def./Ft. = 2.03661 Min.

Station	Arc	Chord Lengths	8' Right	Defl.	Total Defl.
5+58.61	-	-	-	0'00"00"	0'00"00"
5+75.00	16.39'	16.55'	16.55'	0'33"23"	0'33"23"
6+00.00	25.00'	25.24'	25.24'	0'50"55"	1'24"18"
6+25.00	25.00'	25.24'	25.24'	0'50"55"	2'15"13"
6+26.92	1.92'	1.94'	1.94'	0'03"54"	2'19"07"
6+50.00	23.08'	23.30'	23.30'	0'47"01"	3'06"08"
6+75.00	25.00'	25.24'	25.24'	0'50"54"	3'57"02"
6+95.23	20.23'	20.42'	20.42'	0'41"12"	4'38"14"



NOTE: Maintain 10 ft. of horizontal separation (outside dimension to outside dimension) between the water lines and sanitary sewer lines and manholes.



**BAUGHMAN
 COMPANY**

315 Ellis St.
 Wichita, KS 67211
 316-262-7271
 BaughmanCo.com

SCHULTE-JOHNSON 2ND
 ADD. - PHASE I

LINE 3

WATER DISTRIBUTION
 SYSTEM

PROJECT NUMBER:
 448-2019-009457

DESIGN: AEG DRAWN: HWJ

DATE: April 12, 2021

SHEET OF
8 18

File: C:\Projects\Schulte-Johnson 2nd Addition\Engineering\Phase 1\WTRWTR Plans.dwg