

BENCHMARKS:
 CUT OFF "T"-POST, DOWN 0.25'
 13.5' WEST OF POWER POLE
 30' SOUTH OF FIRE HYDRANT
 +/- 200' SOUTH OF CENTERLINE
 DRIVE TO HOUSE # 2816 S MAIZE RD.
 ELEV. = 1328.386 (NAVD 88)

SQUARE CUT WITH + IN SW WINGWALL
 OF THE SOUTHERNMOST OF THREE
 CONCRETE DITCH CHECKS
 +/- 1125' WEST OF CENTERLINE S.
 MAIZE RD, BEHIND HOUSE #2951 S
 MAIZE RD.
 ELEV. = 1332.383 (NAVD88)

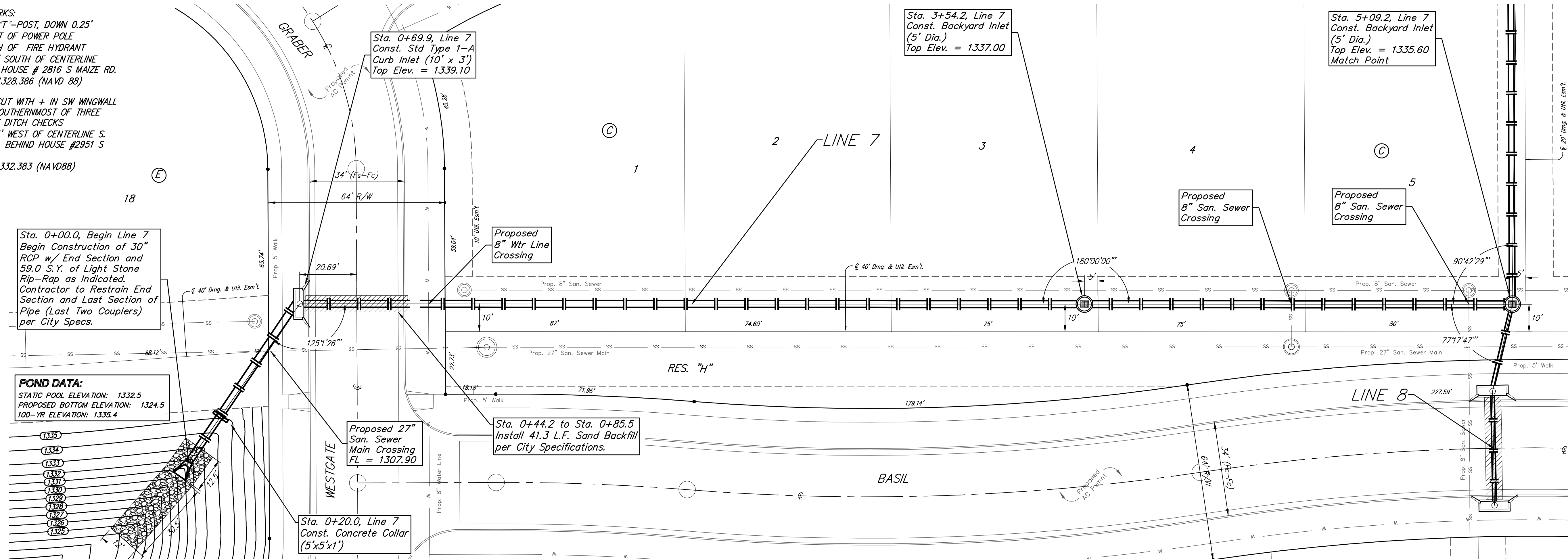
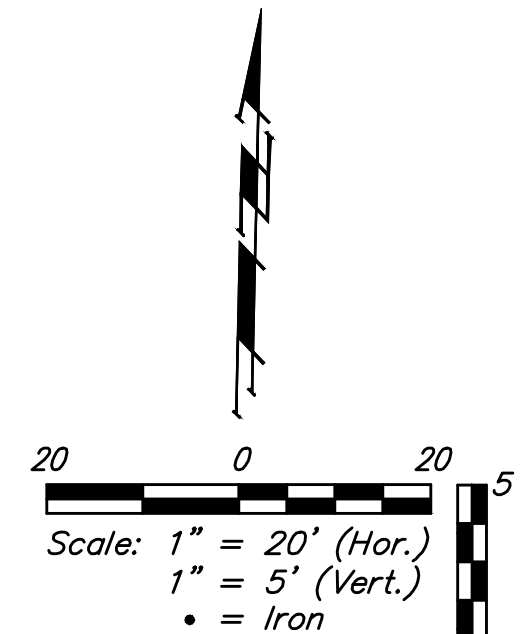
Sta. 0+00.0, Begin Line 7
 Begin Construction of 30"
 RCP w/ End Section and
 59.0 S.Y. of Light Stone
 Rip-Rap as Indicated.
 Contractor to Restrain End
 Section and Last Section of
 Pipe (Last Two Couplers)
 per City Specs.

POND DATA:
 STATIC POOL ELEVATION: 1332.5
 PROPOSED BOTTOM ELEVATION: 1324.5
 100-YR ELEVATION: 1335.4

Sta. 0+69.9, Line 7
 Const. Std Type 1-A
 Curb Inlet (10' x 3')
 Top Elev. = 1339.10

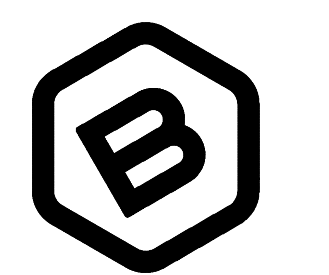
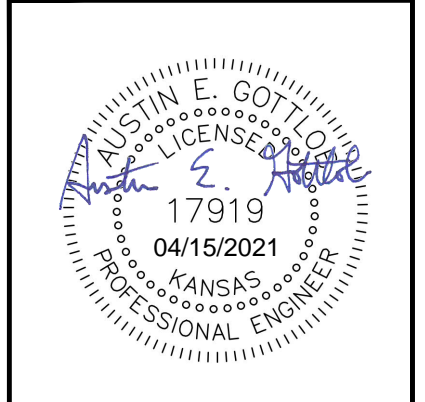
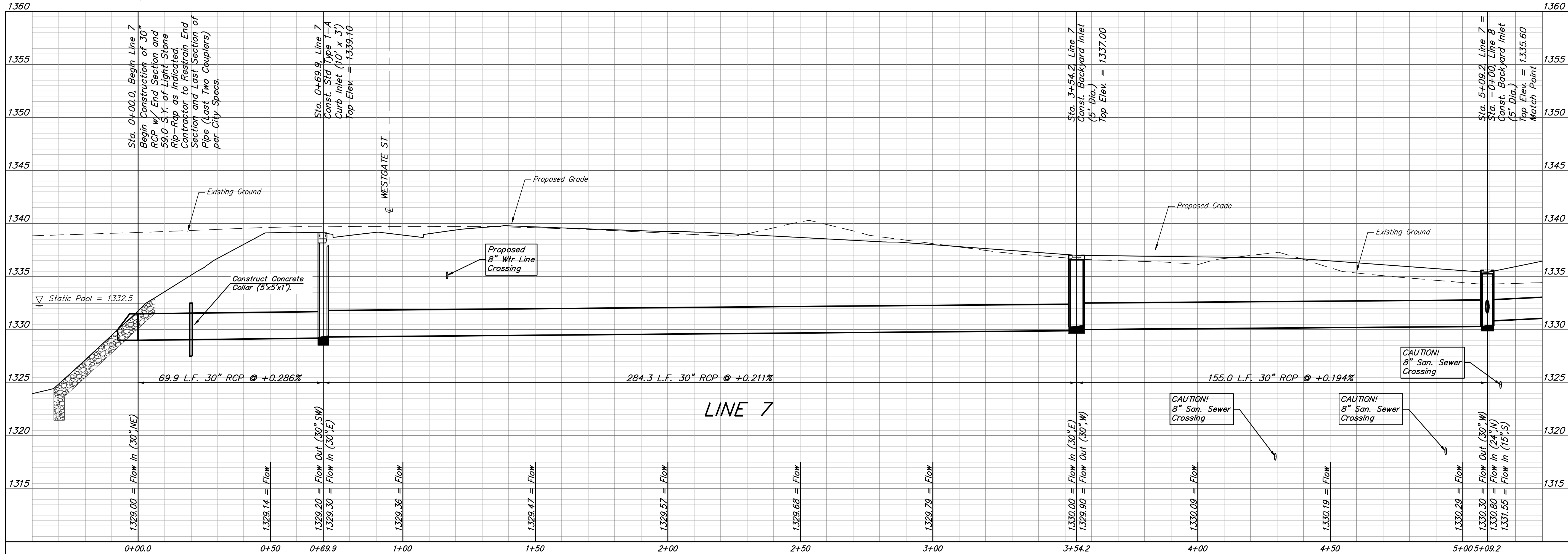
Sta. 3+54.2, Line 7
 Const. Backyard Inlet
 (5' Dia.)
 Top Elev. = 1337.00

Sta. 5+09.2, Line 7
 Const. Backyard Inlet
 (5' Dia.)
 Top Elev. = 1335.60
 Match Point



SCHULTE-JOHNSON
 2ND ADDITION

NOTE:
 Contractor to adjust
 end section as
 necessary to match
 pond slope.



**BAUGHMAN
 COMPANY**
 315 Ellis St.
 Wichita, KS 67211
 316-262-7271
 BaughmanCo.com

SCHULTE-JOHNSON
 2ND ADDITION

LINE 7
 STORMWATER DRAIN
 IMPROVEMENTS

PROJECT NUMBER:
 468-2019-085425

DESIGN: AEG DRAWN: HJW
 DATE: April 12, 2021

SHEET OF
 12 37

File: C:\Projects\Schulte-Johnson 2nd Addition\Engineering\SWS\Plans.dwg