

BENCHMARKS:
 CUT OFF "T"-POST, DOWN 0.25'
 13.5' WEST OF POWER POLE
 30' SOUTH OF FIRE HYDRANT
 +/- 200' SOUTH OF CENTERLINE
 DRIVE TO HOUSE # 2816 S MAIZE RD.
 ELEV. = 1328.386 (NAVD 88)

SQUARE CUT WITH + IN SW WINGWALL
 OF THE SOUTHERNMOST OF THREE
 CONCRETE DITCH CHECKS
 +/- 1125' WEST OF CENTERLINE S.
 MAIZE RD, BEHIND HOUSE #2951 S
 MAIZE RD.
 ELEV. = 1332.383 (NAVD88)

Sta. 0+00.0, Begin Line 9
 Begin Construction of 18"
 RCP w/ End Section and
 65.0 S.Y. of Light Stone
 Rip-Rap as Indicated.
 Contractor to Restrain End
 Section and Last Section of
 Pipe (Last Two Couplers)
 per City Specs.

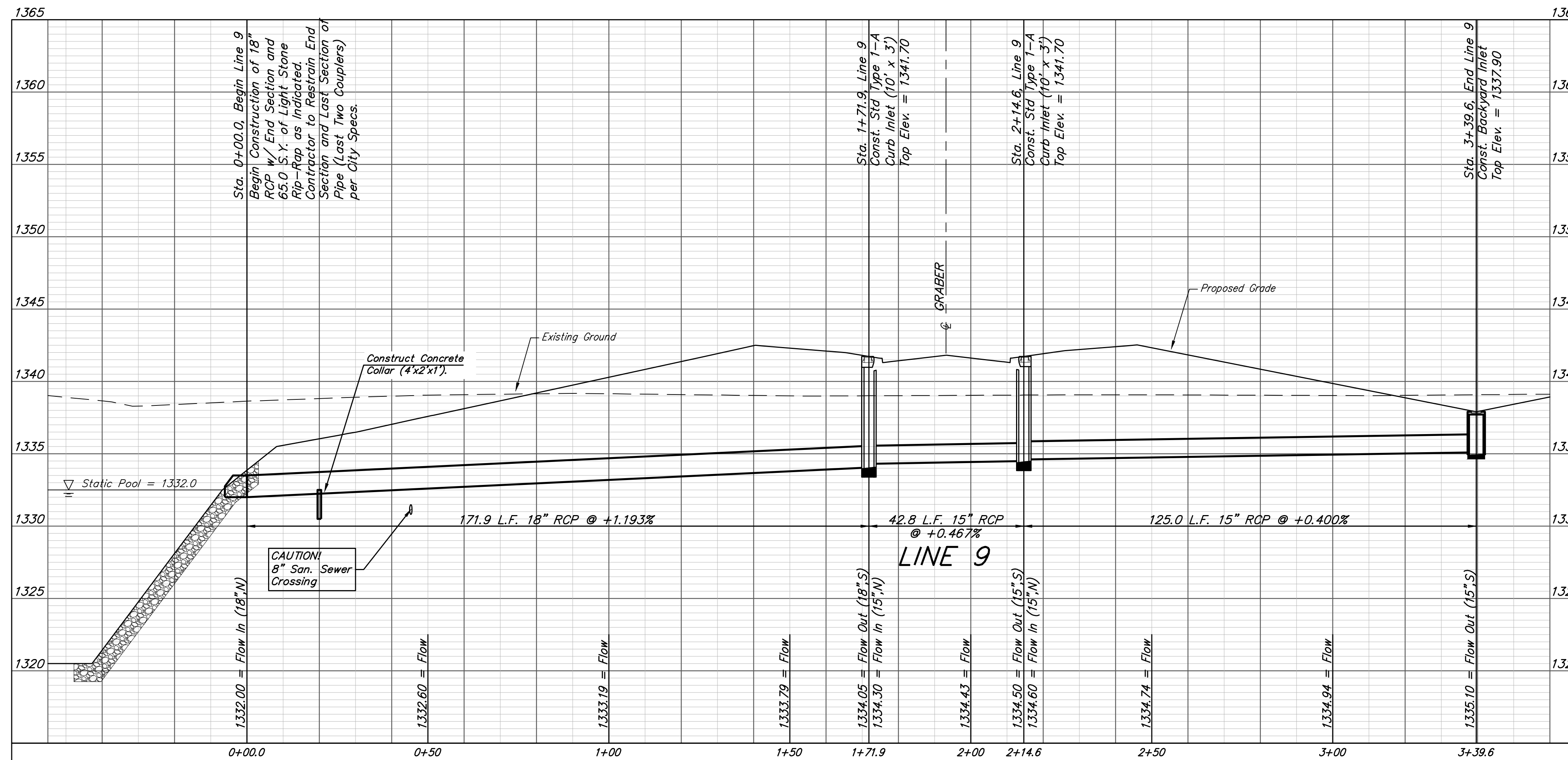
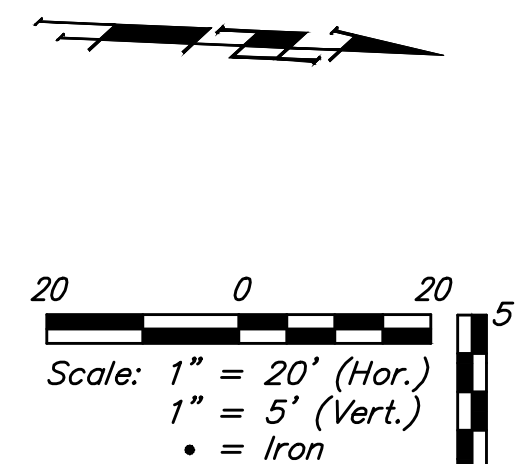
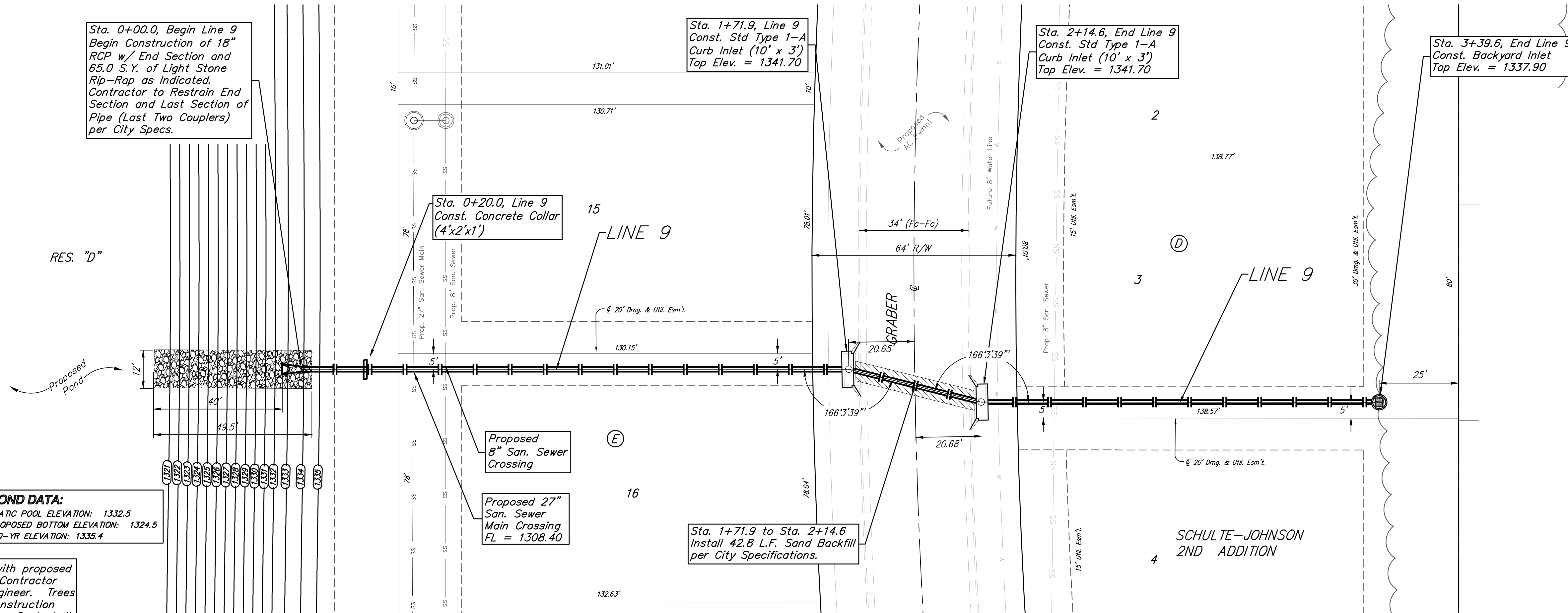
Sta. 1+71.9, Line 9
 Const. Std Type 1-A
 Curb Inlet (10' x 3')
 Top Elev. = 1341.70

Sta. 2+14.6, End Line 9
 Const. Std Type 1-A
 Curb Inlet (10' x 3')
 Top Elev. = 1341.70

Sta. 3+39.6, End Line 9
 Const. Backyard Inlet
 Top Elev. = 1337.90

POND DATA:
 STATIC POOL ELEVATION: 1332.5
 PROPOSED BOTTOM ELEVATION: 1324.5
 100-YR ELEVATION: 1335.4

Existing trees which are in direct conflict with proposed new construction shall be removed by the Contractor ONLY with approval of the Developer or Engineer. Trees not in direct conflict with proposed new construction shall remain and be protected from damage. Cost shall be included in bid item "Site Clearing"



NOTE:
 Contractor to adjust
 end section as
 necessary to match
 pond slope.

BAUGHMAN COMPANY

315 Ellis St.
 Wichita, KS 67211
 316-262-7271
 BaughmanCo.com

SCHULTE-JOHNSON
 2ND ADDITION

LINE 9

STORMWATER DRAIN
 IMPROVEMENTS

PROJECT NUMBER:
 468-2019-085425

DESIGN: AEG DRAWN: HJW

DATE: April 12, 2021

SHEET 15 OF 37

File: C:\Projects\Schulte-Johnson 2nd Addition\Engineering\SWD\SWS Plans.dwg