

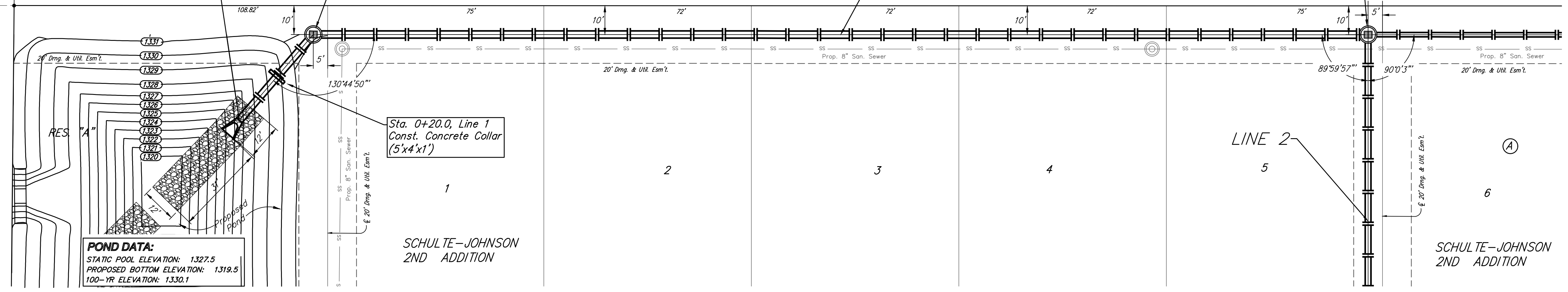
BENCHMARKS:
 CUT OFF "T"-POST, DOWN 0.25'
 13.5' WEST OF POWER POLE
 30' SOUTH OF FIRE HYDRANT
 +/- 200' SOUTH OF CENTERLINE
 DRIVE TO HOUSE # 2816 S MAIZE RD.
 ELEV. = 1328.386 (NAVD 88)

SQUARE CUT WITH + IN SW WINGWALL
 OF THE SOUTHERNMOST OF THREE
 CONCRETE DITCH CHECKS
 +/- 1125' WEST OF CENTERLINE S.
 MAIZE RD, BEHIND HOUSE #2951 S
 MAIZE RD.
 ELEV. = 1332.383 (NAVD88)

Sta. 0+00.0, Begin Line 1
 Begin Construction of 30"
 RCP w/ End Section and
 56.2 S.Y. of Light Stone
 Rip-Rap as Indicated.
 Contractor to Restrain End
 Section and Last Section of
 Pipe (Last Two Couplers)
 per City Specs.

Sta. 0+39.3, Line 1
 Const. Backyard Inlet
 (5' Dia.)
 Top Elev. = 1330.90

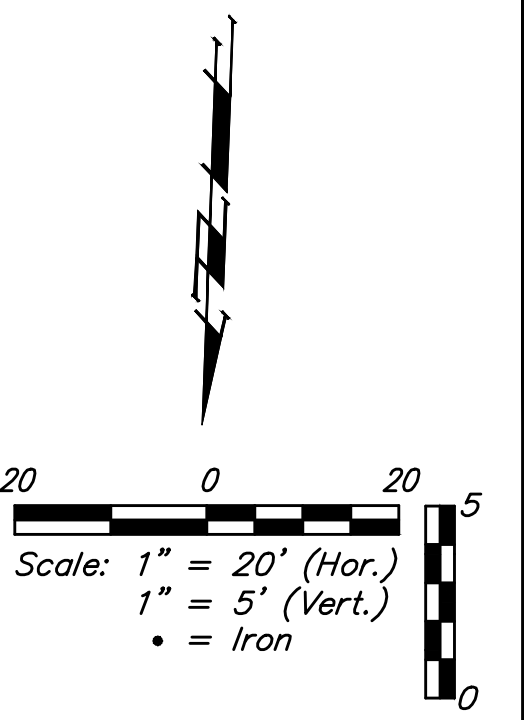
Sta. 4+05.3, Line 1 =
 Sta. 0+00, Line 2
 Const. Backyard Inlet
 (5' Dia.)
 Top Elev. = 1331.60
 Match Point



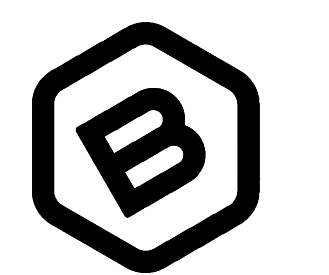
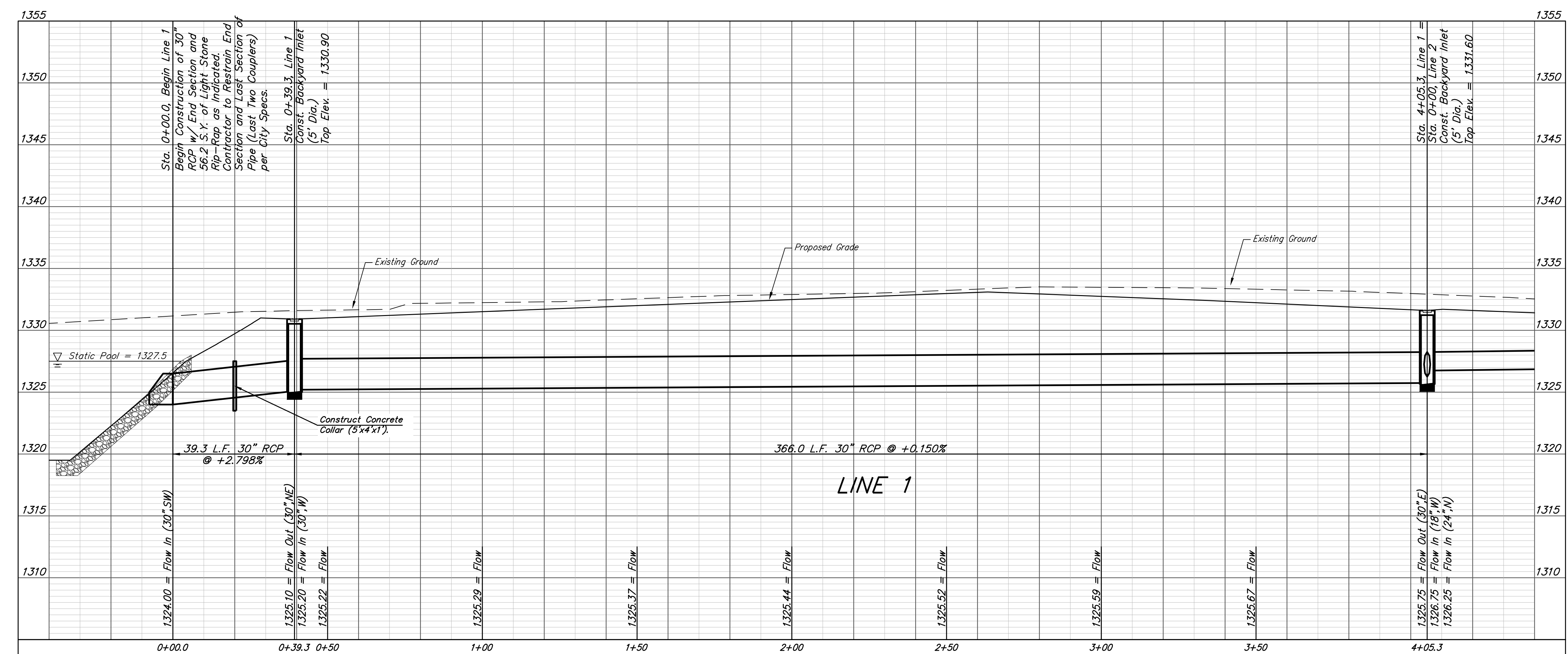
POND DATA:
 STATIC POOL ELEVATION: 1327.5
 PROPOSED BOTTOM ELEVATION: 1319.5
 100-YR ELEVATION: 1330.1

SCHULTE-JOHNSON
 2ND ADDITION

SCHULTE-JOHNSON
 2ND ADDITION



NOTE:
 Contractor to adjust
 end section as
 necessary to match
 pond slope.



**BAUGHMAN
 COMPANY**
 315 Ellis St.
 Wichita, KS 67211
 316-262-7271
 BaughmanCo.com

SCHULTE-JOHNSON
 2ND ADDITION

LINE 1

STORMWATER DRAIN
 IMPROVEMENTS
 PROJECT NUMBER:
 468-2019-085425
 DESIGN: AEG DRAWN: HJW
 DATE: April 12, 2021
 SHEET 2 OF 37

File: C:\Projects\Schulte-Johnson 2nd Addition\Engineering\SWD\SWS Plans.dwg