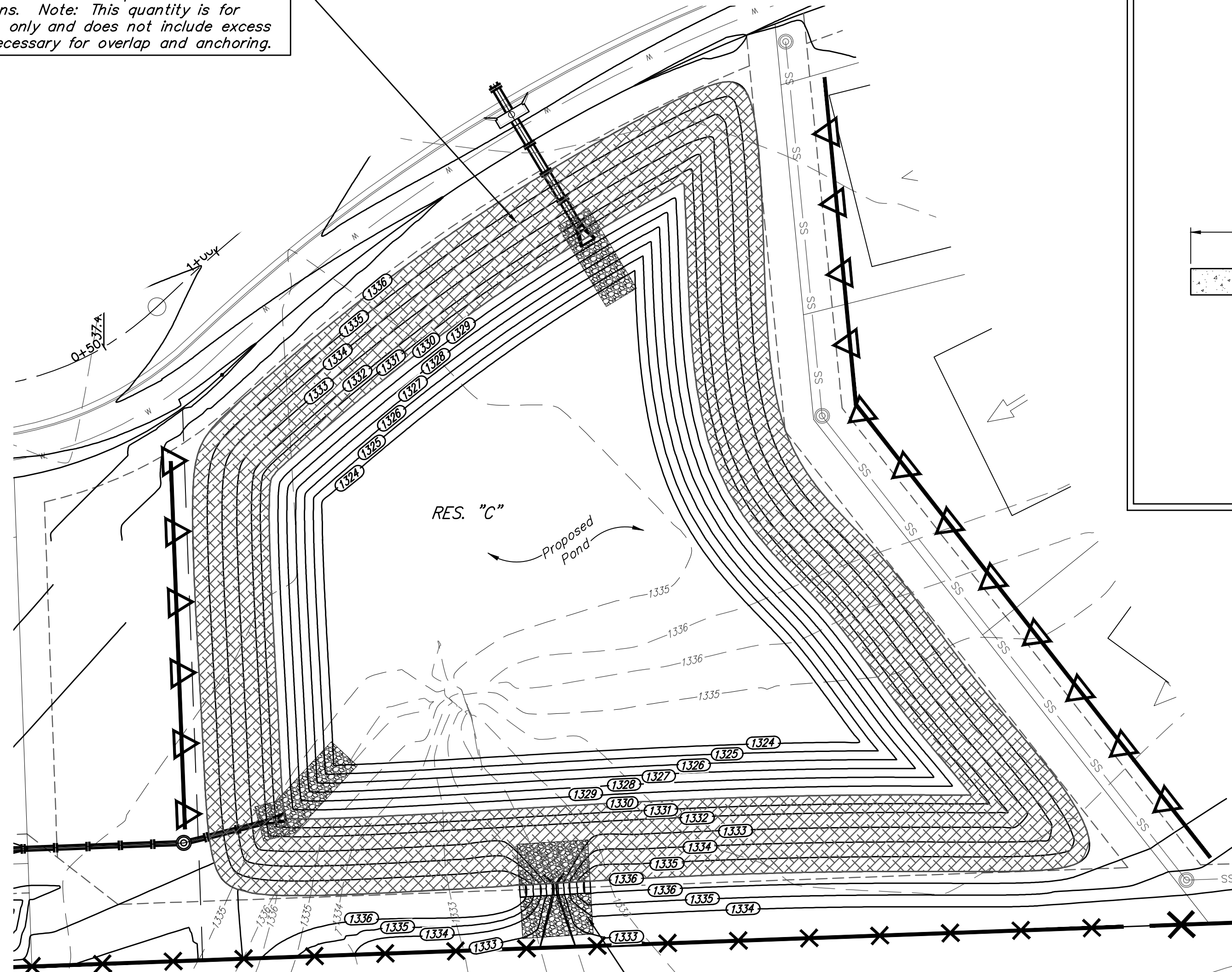


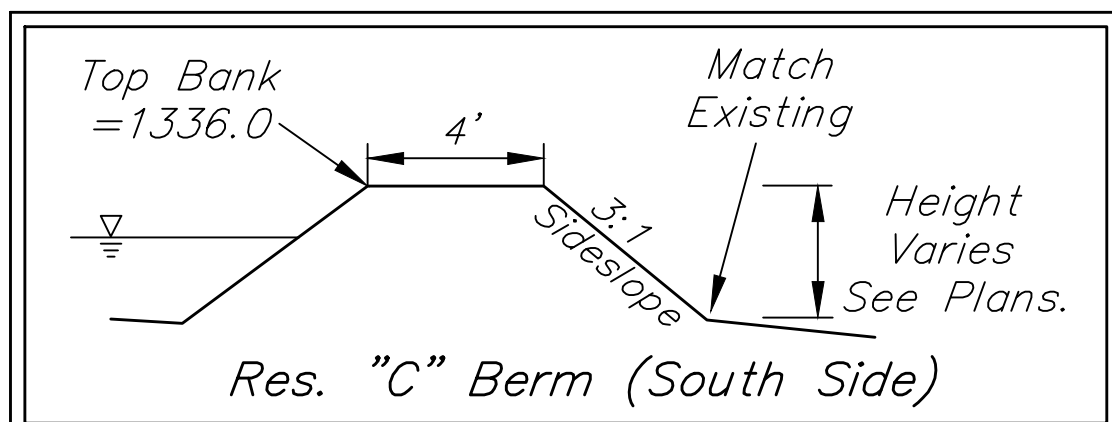
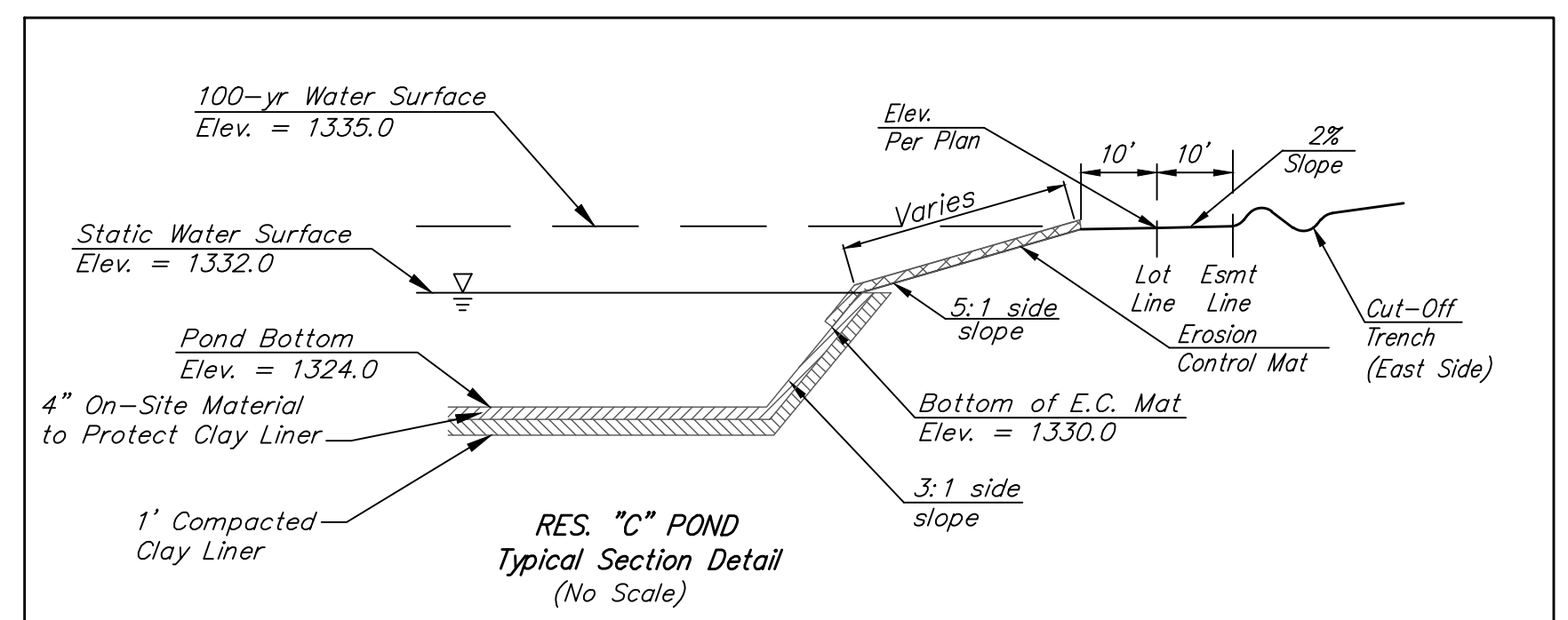
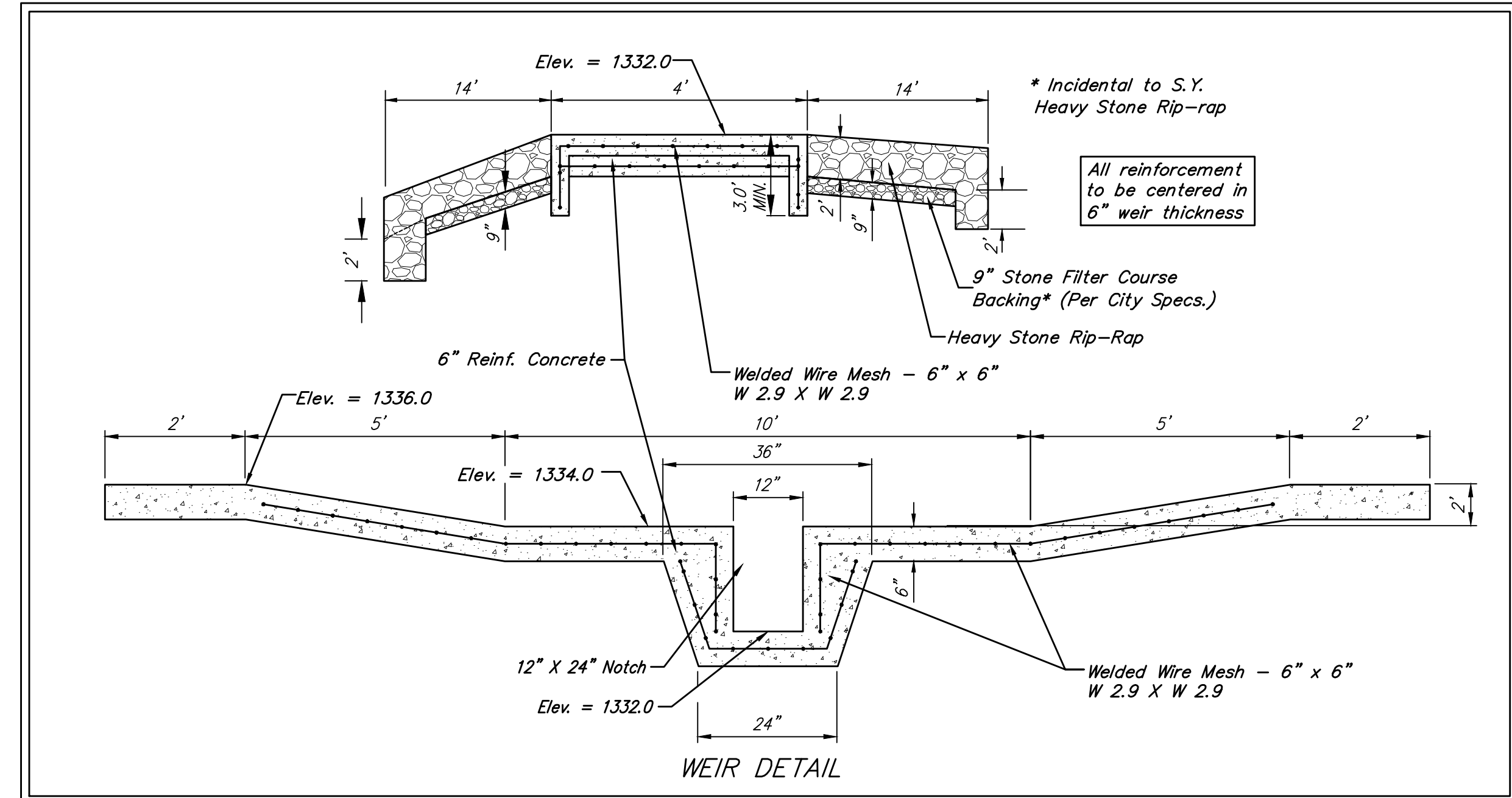
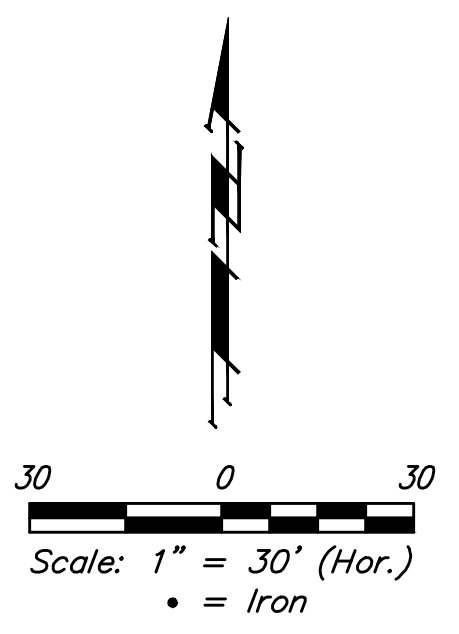
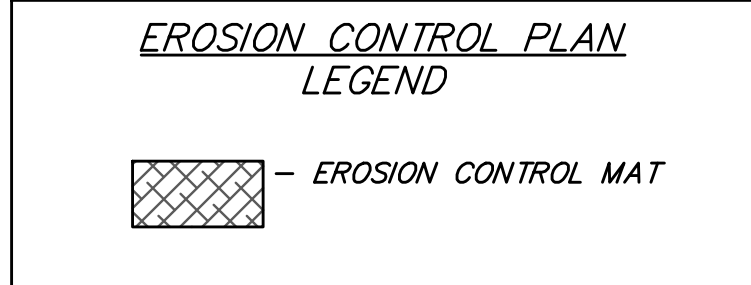
BENCHMARKS:
 CUT OFF "T"-POST, DOWN 0.25'
 13.5' WEST OF POWER POLE
 30' SOUTH OF FIRE HYDRANT
 +/- 200' SOUTH OF CENTERLINE
 DRIVE TO HOUSE # 2816 S MAIZE RD.
 ELEV. = 1328.386 (NAVD 88)

SQUARE CUT WITH + IN SW WINGWALL
 OF THE SOUTHERNMOST OF THREE
 CONCRETE DITCH CHECKS
 +/- 1125' WEST OF CENTERLINE S.
 MAIZE RD, BEHIND HOUSE #2951 S
 MAIZE RD.
 ELEV. = 1332.383 (NAVD88)

Install 2,525 S.Y. North American Green Bionet S150BN Biodegradable Erosion Control Mat, or approved equal around pond as indicated (See Detail, Sheet 26) Erosion control mat shall be installed and anchored per manufacturer's specifications. Note: This quantity is for information only and does not include excess material necessary for overlap and anchoring.



Construct 24'x4' Reinforced Conc. Wier w/ 50 S.Y. Heavy Stone Rip-rap (each side) as Indicated.



BAUGHMAN COMPANY

315 Ellis St.
 Wichita, KS 67211
 316-262-7271
 BaughmanCo.com

SCHULTE-JOHNSON
 2ND ADDITION

POND PLAN

STORMWATER DRAIN IMPROVEMENTS
 PROJECT NUMBER:
 468-2019-085425
 DESIGN: AEG DRAWN: HJW
 DATE: April 12, 2021

SHEET OF
 25 37

File: C:\Projects\Schulte-Johnson\2nd Addition\Engineering\SWD\SWD Plans.dwg