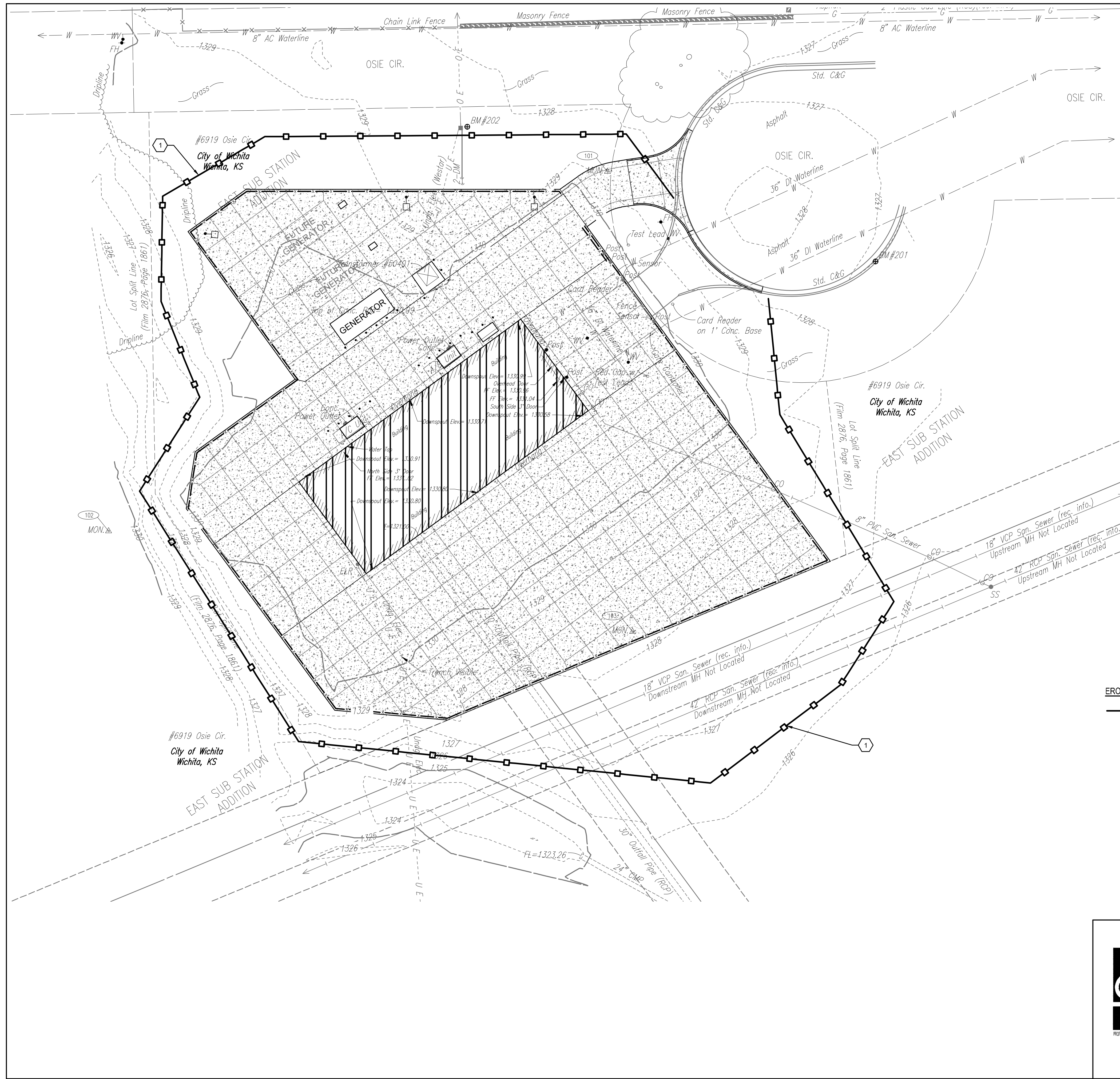


Saved: 02-05-2021 2:27:03 PM by ROY, THOMAS  
 Plot Scale 1:1 03-04-2021 4:22:54 PM by ROY, THOMAS  
 U:\Wichita-Facility\180537\000\Drawings\Plans\180537-000-03102



- ### KEYNOTES
1. INSTALL SILT FENCE

- ### GENERAL SHEET NOTES
1. THE EROSION CONTROL DEVICES SHOWN ON THIS SHEET ARE CONSIDERED MINIMUM STANDARDS. WHENEVER SEDIMENT ENTERS THE STREETS, STORM SEWERS, DITCHES, OR PONDS, CONTRACTOR WILL INSTALL ADDITIONAL DEVICES, AS NEEDED, TO CORRECT THE PROBLEM.
  2. THE EROSION CONTROL DEVICES SHOWN HEREON MUST BE IN PLACE AT ALL TIMES DURING CONSTRUCTION UNTIL SUCH TIME AS THE SITE IS REESTABLISHED WITH PAVING OR GRASS. TEMPORARY OR PERMANENT SEEDING AND MULCH WILL BE INSTALLED WHEN EARTHWORK ACTIVITIES CEASE IN AN AREA FOR 14 DAYS OR MORE.
  3. ANY MUD INADVERTENTLY TRACKED ONTO ANY STREET SHALL BE CLEANED UP BY THE CONTRACTOR, AT THE END OF EACH DAY'S WORK, OR AS DIRECTED BY THE FIELD ENGINEER.
  4. CONTRACTOR TO FURNISH A TRUCK WASH-OUT PIT TO BE PLACED AT A CONVENIENT LOCATION THAT DOES NOT CONFLICT WITH CONSTRUCTION. CONTRACTOR SHALL CLEAN OUT AND BACKFILL PIT PRIOR TO FINAL INSPECTION. LOCATION SHALL BE APPROVED BY THE FIELD ENGINEER.
  5. SEE EROSION CONTROL DETAILS: CG501 - CG505.
  6. THE CONTRACTOR SHALL SEED ALL AREAS DISTURBED DURING CONSTRUCTION. MATERIALS FOR SEEDING SHALL BE AS LISTED BELOW:
 

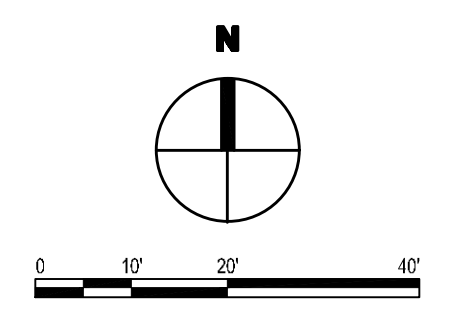
GRASS SEED - BROME GRASS SEED SHALL BE PLANTED AT A MINIMUM RATE OF 20 LBS. PLS (PURE LIVE SEED) PER ACRE.

SEASONAL INFO:  
 FALL AUG. 15-SEP. 20  
 WINTER DEC. 1-FEB. 15  
 SPRING FEB. 15-APR. 1

FERTILIZER - FERTILIZER SHALL CONTAIN A MINIMUM OF 12% NITROGEN, 24% PHOSPHORUS, AND 12% POTASSIUM. FERTILIZER SHALL BE DISTRIBUTED AT A MINIMUM RATE OF 200 LBS PER ACRE.

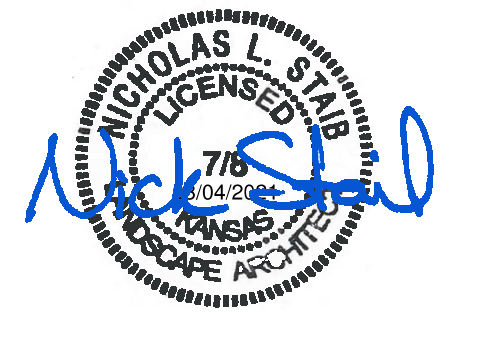
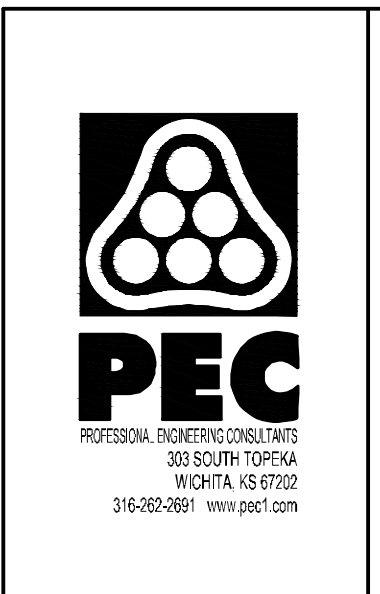
MULCH - MULCH SHALL BE APPLIED TO ALL AREAS WITH SLOPES GREATER THAN 3 TO 1. APPLY MULCHING AT THE RATE OF 2 TONS PER ACRE. MULCH TYPE SHALL BE PRAIRIE HAY.

PRIOR TO SEEDING, THE CONTRACTOR SHALL INSTALL OR VERIFY THAT A MIN. 8" TOPSOIL EXISTS.



- ### EROSION CONTROL LEGEND
- PROPOSED SILT FENCE
  - PROPOSED INLET PROTECTION
  - PROPOSED DITCH CHECK
  - PROPOSED FLOW DIRECTION
  - PROPOSED RIP-RAP
  - PROPOSED TURF REINFORCEMENT MAT
  - PROPOSED STABILIZED CONSTRUCTION ENTRANCE
  - PROPOSED EROSION CONTROL BLANKET
  - PROPOSED SEED/SOD AREA

4			
3			
2			
1	CONSTRUCTION DOCUMENTS		03-04-21
No.	Revision	By	Date



CITY OF WICHITA, KANSAS

## EROSION CONTROL PLAN

STANDBY POWER GENERATION - SOUTHEAST PUMP STATION

**Professional Engineering Consultants, P.A.**  
 303 S. TOPEKA • WICHITA, KANSAS 67202  
 316-262-2691 • FAX 316-262-3003

Designed by NLS	Job No. 180537-000	Dwg No. CG102
Drawn by RFT	Checked by MEB	Date MARCH 2021