

Scale: 1" = 20'

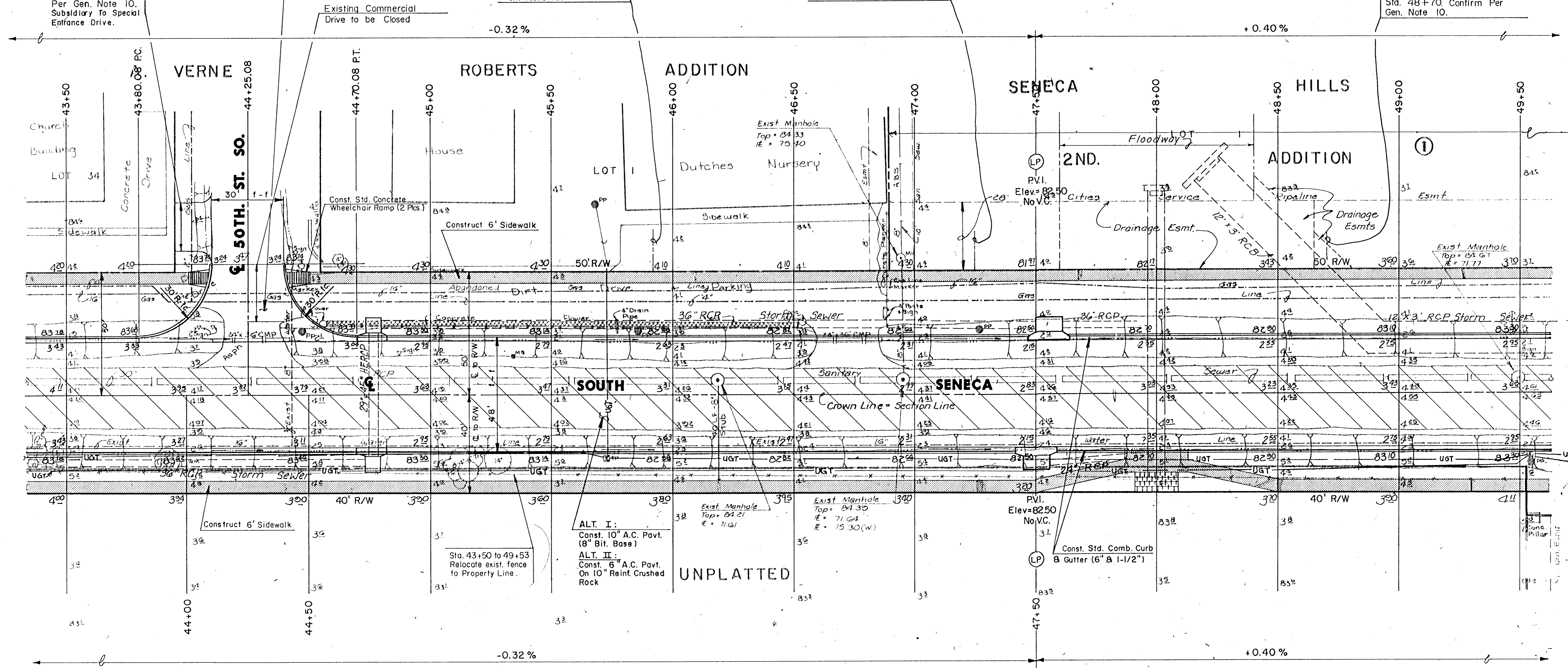
ALT. I:
Const. 10" Valley Gutter
6" Reinf. Conc. & 4" A.C. Base
ALT. II:
Const. 6" Reinf. Conc. Valley Gutter
On 10" Reinf. Crushed Rock

Construct 20' Drive,
Dirt Fill & 6" Gravel
Surface. Confirm
Per Gen. Note 10.
Subsidiary To Special
Entrance Drive.

Construct Commercial Drive
Entrance With ϵ at Approx.
Sta. 45+92. Confirm Per
Gen. Note 10.

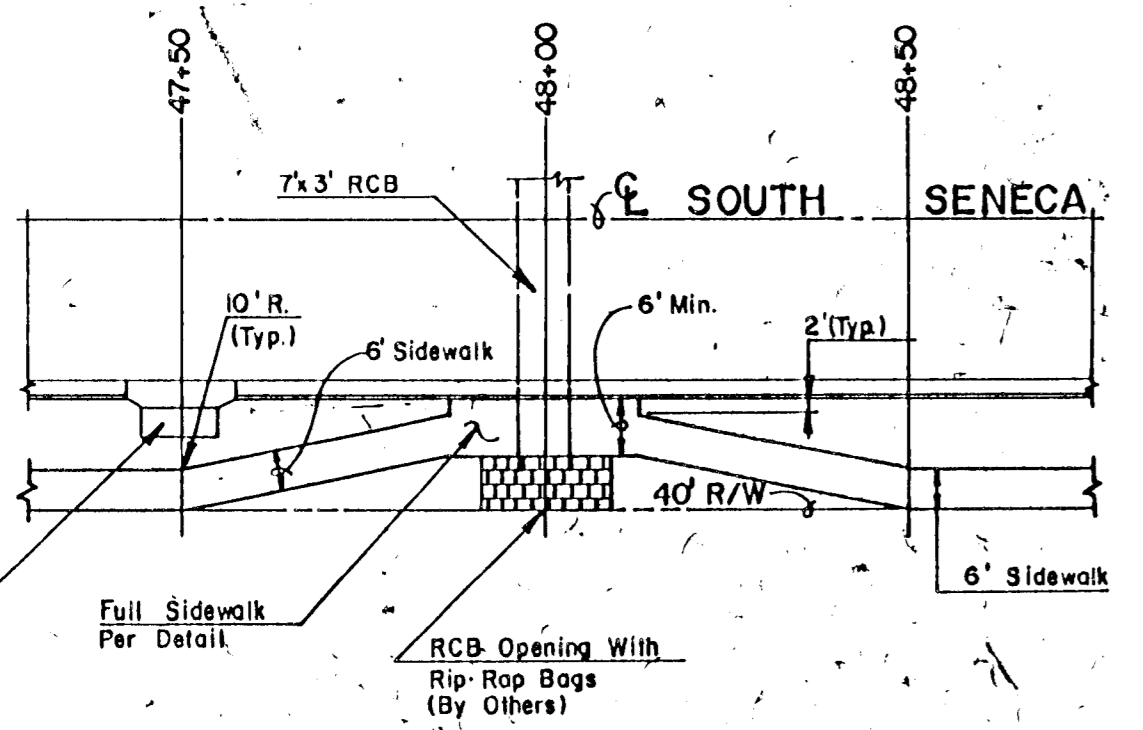
Construct Commercial Drive
Entrance With ϵ at Approx.
Sta. 47+25. Confirm Per
Gen. Note 10.

Construct Commercial Drive
Entrance With ϵ at Approx.
Sta. 48+70. Confirm Per
Gen. Note 10.

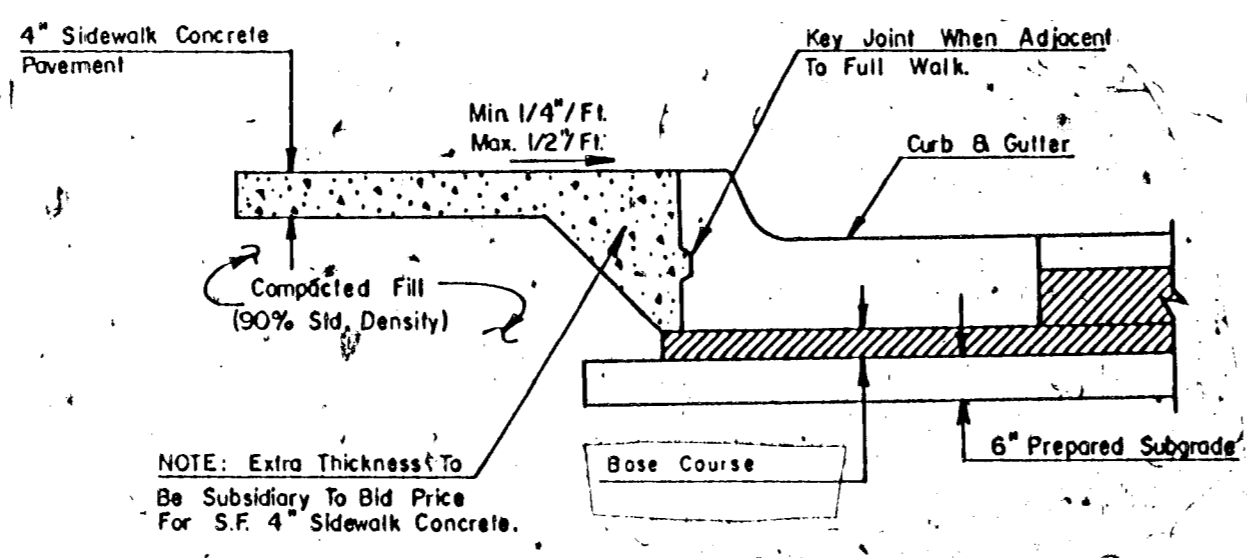


ALT. I:
Const. 10" A.C. Pavt.
(8" Bit. Base)
ALT. II:
Const. 6" A.C. Pavt.
On 10" Reinf. Crushed
Rock

Sta. 43+50 to 49+53
Relocate exist. fence to
Property Line.



SIDEWALK - SENECA
STA. 47+50 TO STA. 48+50 RIGHT



FULL SIDEWALK DETAIL

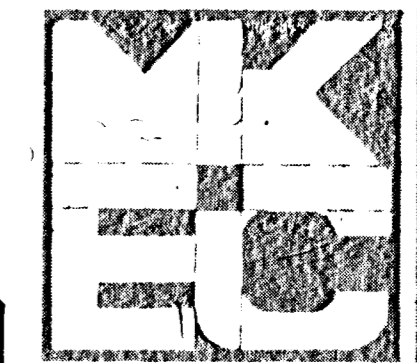
SEWER MANHOLE ADJUSTMENT

STA	OFFSET	EXIST. ELEV.	PROP. ELEV.
46+18	6'L	84.21	83.06
46+96	6'L	84.39	82.82
48+50	6'L	84.67	83.44

WATER VALVE BOX ADJUSTMENT

STA	OFFSET	EXIST. ELEV.	PROP. ELEV.	NOTES
44+43	20'R	83.43	83.12	
44+45	55'L	84.16	83.74	WV/EL

* Side Street Inlet Hookups are Future Construction and not a part of this construction unless specifically stated.



**SOUTH SENECA
IMPROVEMENTS**

PAVING PLAN
55TH ST. SO. TO 48TH ST. SO.

MID-KANSAS ENGINEERING CONSULTANTS PA
1500 NORTH ROCK ROAD
BUILDING #600
WICHITA, KANSAS 67226

DCH
DLM
OCT. 1989
11
58