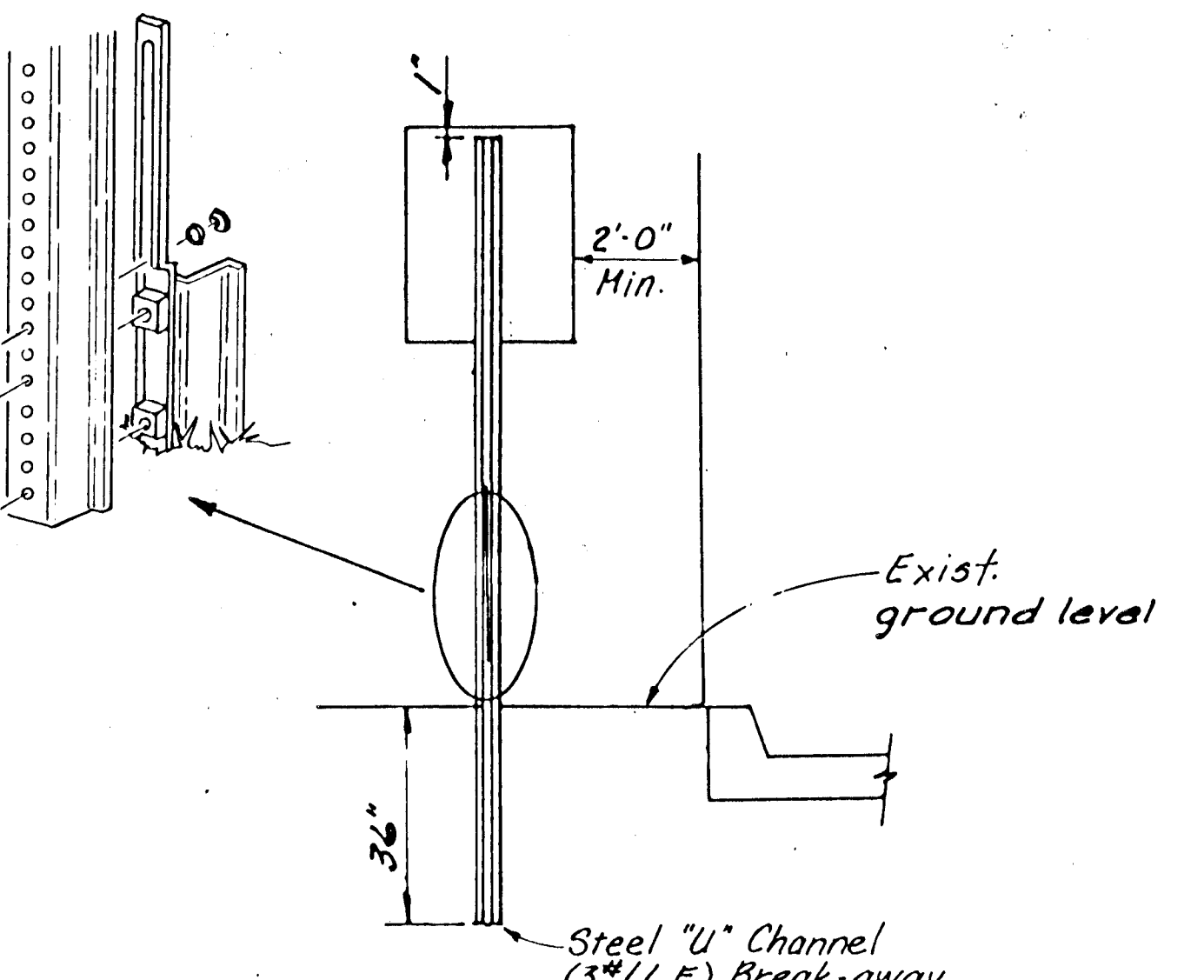
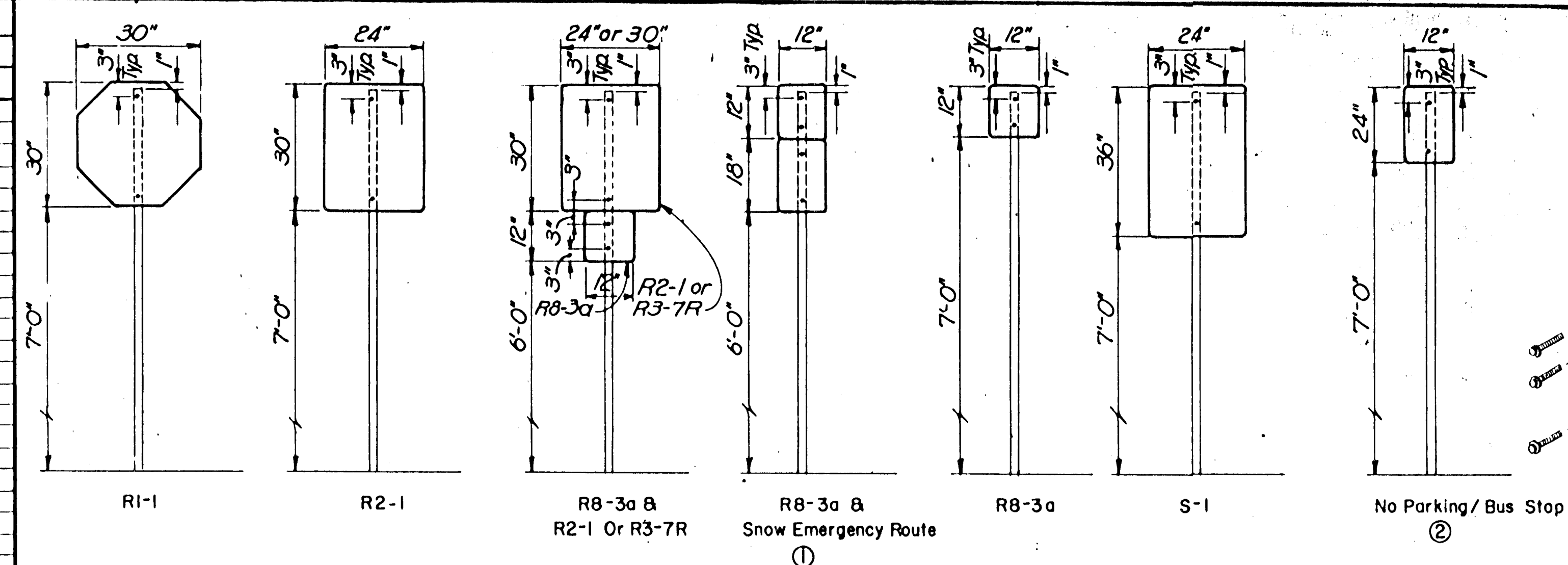


TRAFFIC CONTROL SIGNS & SIGN POSTS

FHWA REGION NO.	STATE	PROJECT NO.	YEAR	SHEET NO.	TOTAL SHEETS
7	KANSAS		198		

Station	Location from L	Classification - Each										Sign Post Length		
		R1-1	S-1	R2-1	R3-7R	R8-3a	①	②	W9-1	W4-2F	Channel	Breakaway Length 1 3/4" x 1 3/4" x Varies	"L.F."	
13+03														
16+43		X												
20+03		X												
23+33		X												
26+64		X												
29+21				X										
29+93		X												
30+14		X												
34+10		X												
34+13		X												
35+71				X										
38+15		X												
41+45		X												
44+05		X												
48+76								X						
52+91								X						
54+49		X												



SIGN MOUNTING DETAILS

SIGN POST LENGTH SUMMARY	
BREAKAWAY SIGN POST: 1 3/4" x 1 3/4" x Varies	
LENGTH	TOTAL # POSTS
9'	
2 1/4" x 2 1/4" x 18"	
2" x 2" x 36"	
U-CHANNEL	
LENGTH	TOTAL # POSTS
Stubs 3'	17
Posts 8'	
Posts 9'	
Posts 9 1/2'	15
Posts 11'	2
Straps & Bolts	

RECAPITULATION OF MATERIALS		
ITEMS	TOTAL	UNIT
Sign Face, High Intensity HA Reflective Sheeting	95	S.F.
Steel "U" Channel Sign Post		L.F.
Breakaway Sign Post, 1 3/4" x 1 3/4" x Varies		L.F.
Breakaway Anchor/sleeve, 2 1/4" x 2 1/4" x 18"		L.F.
Breakaway Sign Post Anchor, 2" x 2" x 36"		L.F.

SUMMARY OF QUANTITIES		
BID ITEMS	TOTAL	UNIT
Signing	Lump Sum	L.S.

CLASSIFICATION	TYPE	PROCESS	SIZE	AREA
R1-1	STOP SIGN	REVERSE SCREEN	30" x 30"	5.18 SQ. FT.
R3-7R	RT. LANE MUST TURN RT.	DIRECT SCREEN	30" x 30"	6.25 SQ. FT.
R8-3a	NO PARKING	DIRECT SCREEN	12" x 12"	1.00 SQ. FT.
R2-1	SPEED LIMIT	DIRECT SCREEN	24" x 30"	5.00 SQ. FT.
①	SNOW EMERGENCY ROUTE	DIRECT SCREEN	12" x 18"	1.50 SQ. FT.
②	NO PARKING/BUS STOP	DIRECT SCREEN	12" x 24"	2.00 SQ. FT.
S-1	NO LT. TURN AT KELLOGG	DIRECT SCREEN	24" x 36"	6.00 SQ. FT.

PAVEMENT INSTALLATION SEQUENCE

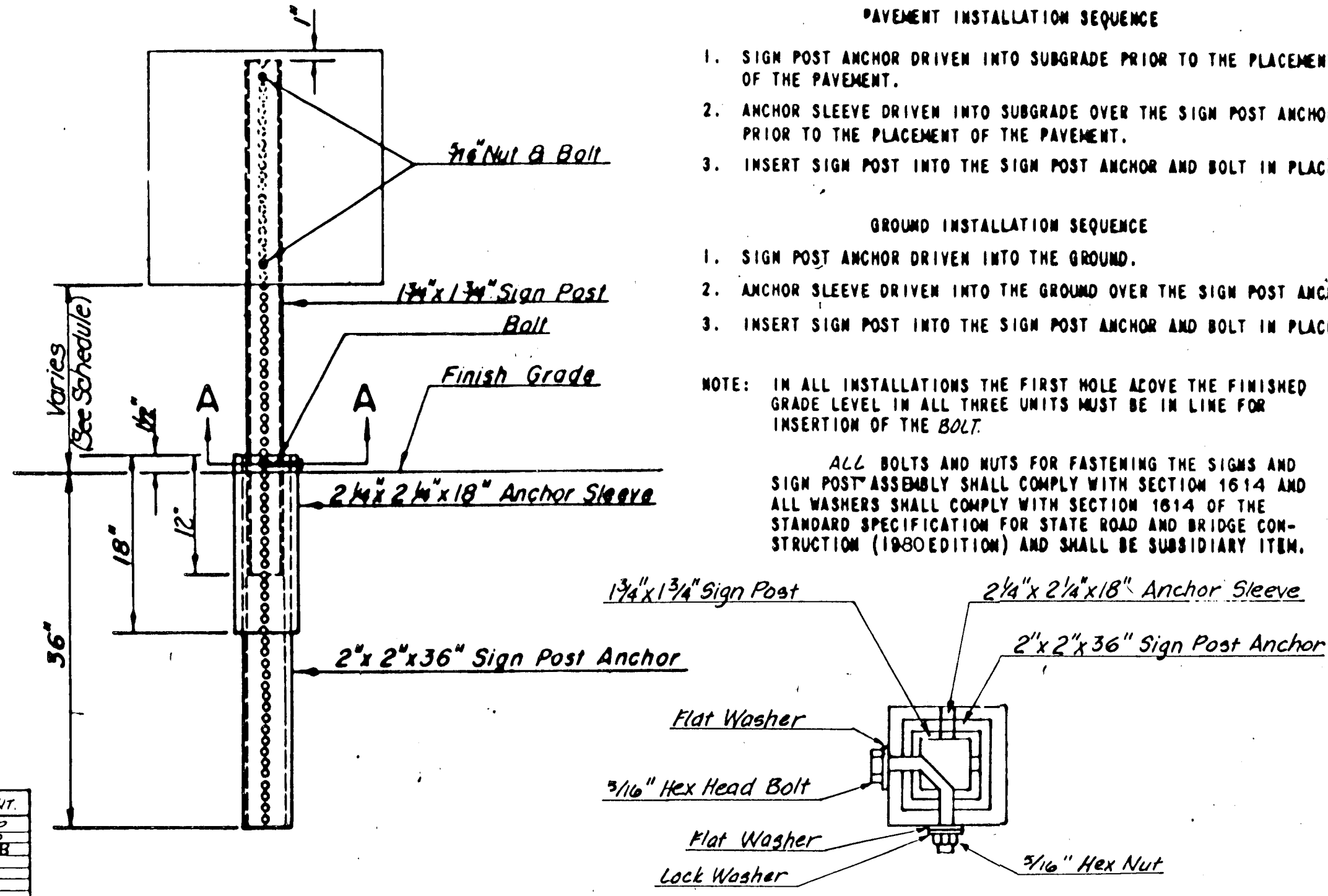
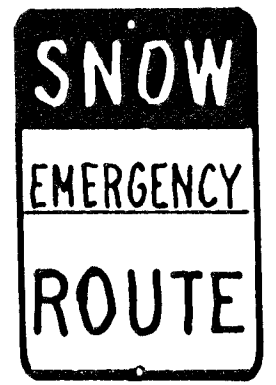
- SIGN POST ANCHOR DRIVEN INTO SUBGRADE PRIOR TO THE PLACEMENT OF THE PAVEMENT.
- ANCHOR SLEEVE DRIVEN INTO SUBGRADE OVER THE SIGN POST ANCHOR PRIOR TO THE PLACEMENT OF THE PAVEMENT.
- INSERT SIGN POST INTO THE SIGN POST ANCHOR AND BOLT IN PLACE.

GROUND INSTALLATION SEQUENCE

- SIGN POST ANCHOR DRIVEN INTO THE GROUND.
- ANCHOR SLEEVE DRIVEN INTO THE GROUND OVER THE SIGN POST ANCHOR.
- INSERT SIGN POST INTO THE SIGN POST ANCHOR AND BOLT IN PLACE.

NOTE: IN ALL INSTALLATIONS THE FIRST HOLE ABOVE THE FINISHED GRADE LEVEL IN ALL THREE UNITS MUST BE IN LINE FOR INSERTION OF THE BOLT.

ALL BOLTS AND NUTS FOR FASTENING THE SIGNS AND SIGN POST ASSEMBLY SHALL COMPLY WITH SECTION 1614 AND ALL WASHERS SHALL COMPLY WITH SECTION 1614 OF THE STANDARD SPECIFICATION FOR STATE ROAD AND BRIDGE CONSTRUCTION (1980 EDITION) AND SHALL BE SUBSIDIARY ITEM.



BREAK-AWAY SIGN POST DETAIL

NOTE: ALL LETTER, NUMBER & SYMBOL SIZES, SPACING & COLORS AND THE SIGN COLORS SHALL CONFORM TO THE CURRENT "MANUAL ON UNIFORM TRAFFIC CONTROL DEVICES."

ALL SIGN MATERIAL TO BE 0080 ALUMINUM.

WICHITA, KANSAS			
SIGNING DETAILS			
JOB NO.	DATE	CHKD.	
SCALE: None	DRAWN:	APPRD.	

Total