

POT STA. 25+44.28, 5/8" REBAR  
 W 1/4 COR., SEC. 31-26S-2E  
 CHISLED 'X', S. END HEADWALL  
 CHISLED 'X', ON CURB  
 CHISLED 'X', ON CURB  
 CHISLED 'X', ON CURB

140.76' SW  
 13.03' W  
 13.62' E  
 34.01' NW

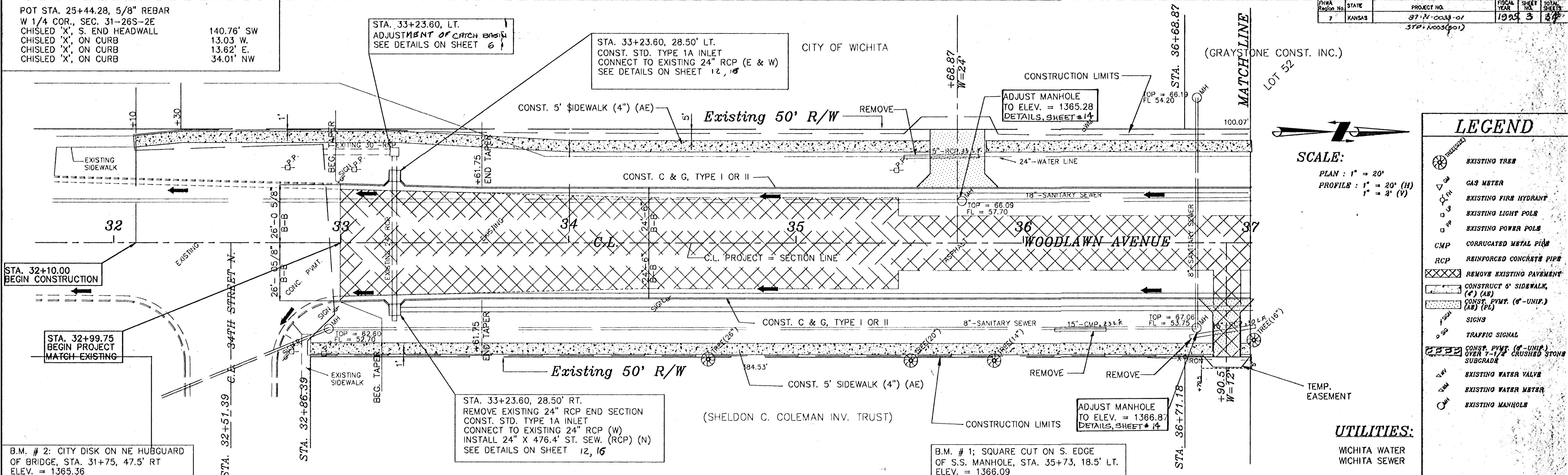
STA. 33+23.60, LT.  
 ADJUSTMENT OF CATCH BASIN  
 SEE DETAILS ON SHEET 6

STA. 33+23.60, 28.50' LT.  
 CONST. STD. TYPE 1A INLET  
 CONNECT TO EXISTING 24" RCP (E & W)  
 SEE DETAILS ON SHEET 12, 15

CITY OF WICHITA

(GRAY ONE CONST. INC.)

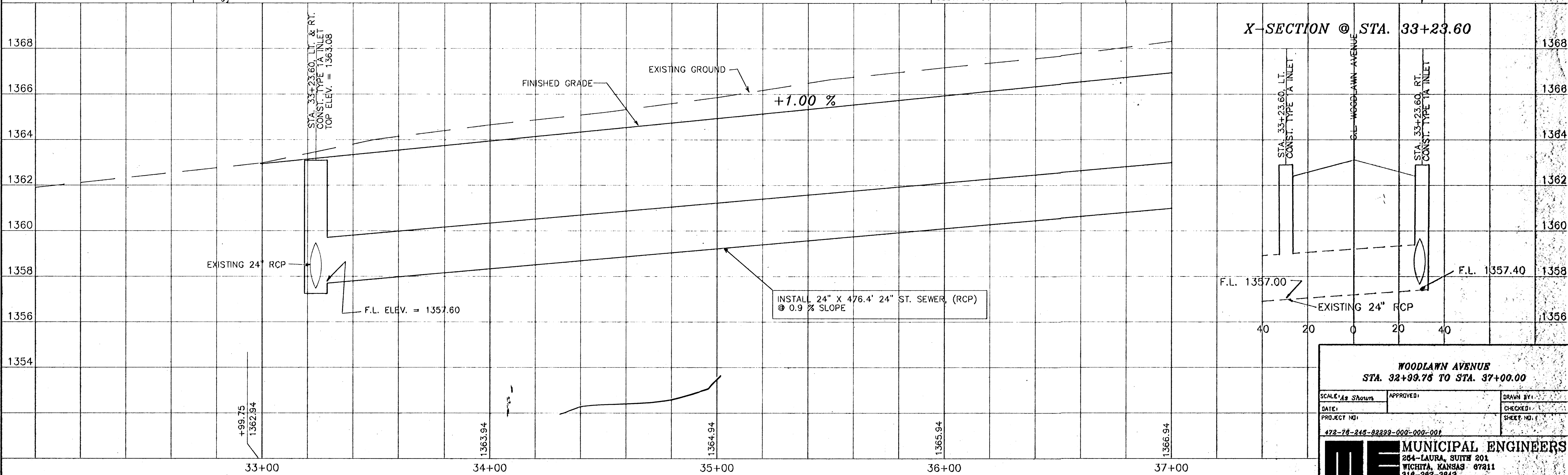
FWA Region No.	STATE	PROJECT NO.	FISCAL YEAR	SHEET NO.	TOTAL SHEETS
7	KANSAS	87-N-0033-01 STP: 0003(001)	1993	3	3



SCALE:  
 PLAN : 1" = 20'  
 PROFILE : 1" = 20' (H)  
 1" = 3' (V)

### LEGEND

- EXISTING TREE
- GAS METER
- EXISTING FIRE HYDRANT
- EXISTING LIGHT POLE
- EXISTING POWER POLE
- CORRUGATED METAL PIPE
- REINFORCED CONCRETE PIPE
- REMOVE EXISTING PAVEMENT
- CONSTRUCT 5' SIDEWALK, (4") (AE)
- CONST. PVT. (4'-UNIF.) (AE) (PL)
- SIGNS
- TRAFFIC SIGNAL
- CONST. PVT. (4'-UNIF.) OVER 7-1/2" CRUSHED STONE SUBGRADE
- EXISTING WATER VALVE
- EXISTING WATER METER
- EXISTING MANHOLE



**WOODLAWN AVENUE**  
 STA. 32+99.75 TO STA. 37+00.00

SCALE: As Shown APPROVED: \_\_\_\_\_ DRAWN BY: \_\_\_\_\_  
 DATE: \_\_\_\_\_ CHECKED: \_\_\_\_\_  
 PROJECT NO: 472-78-245-82299-000-000-001 SHEET NO: \_\_\_\_\_

**ME MUNICIPAL ENGINEERS**  
 264-LAURA, SUITE 201  
 WICHITA, KANSAS 67211  
 318-282-3843