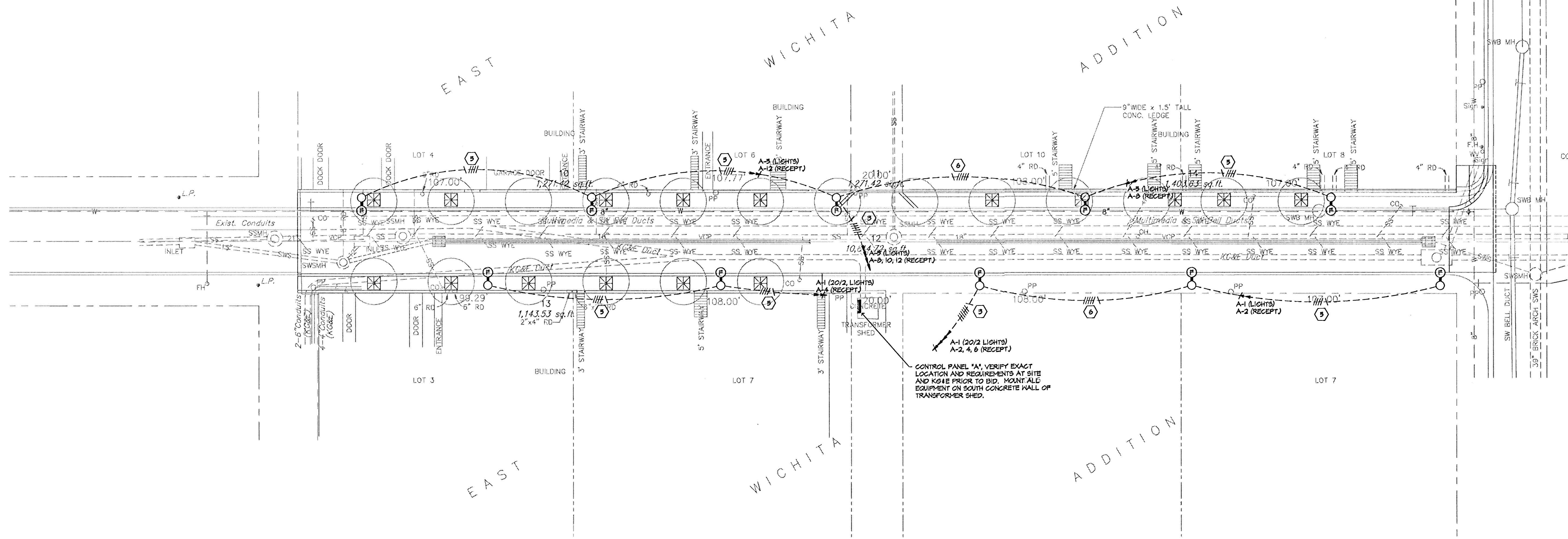
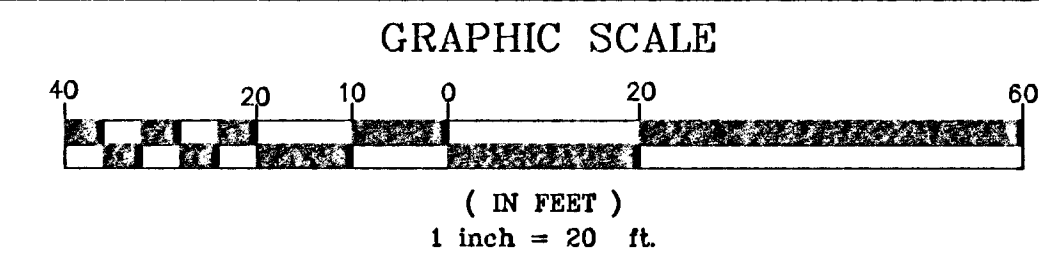


S.V.A. DWG. NAME: D:\94001\4001E02; DATE: 03/22/94; TIME: 08:12



**PARTIAL ROCK ISLAND STREET LIGHTING PLAN**



FEEDER SCHEDULE						
FEEDER IDENT.	CONDUCTORS		GROUND SIZE PER SET	ISOLATED GROUND SIZE	CONDUIT SIZE PER SET	
	SETS	QUANT. PER SET				
1	1	4	#3 THHN	#10	1 1/4"	
2	1	4	#3 THHN	#10	1 1/4"	
3	1	6	#6 THHN	#10	1"	
4	1	5	#6 THHN	#10	1"	
5	1	4	#10 THHN	#10	3/4"	
6	1	5	#10 THHN	#10	3/4"	
7	1	6	#6 THHN	#10	1 1/4"	

LIGHT POLE LOCATIONS ROCK ISLAND	
STATION	LOCATION
1+77	15.5' LL
2+28	15.5' RL
2+68.2	15.5' LL
3+16.2	15.5' RL
3+61.5	15.5' LL
4+16.7	15.5' RL
4+57.7	15.5' LL
4+99	15.5' RL
5+53.1	15.5' LL
5+98.4	15.5' RL



**Stefan A. Orgett**  
 Electrical Engineering and Design  
 628 N. Broadway, Suite B  
 Wichita, Ka. 67214-3587  
 (316) 264-3048  
 FAX: (316) 264-3042

OLD TOWN STREET IMPROVEMENTS -- PH. 2  
 ROCK ISLAND

**SRB** 841 SOUTH HILLSIDE WICHITA, KANSAS 67211 316-652-7754 FAX 652-7932

**SAVOY, RUGGLES & BOHM, P.A.**  
 ENGINEERING & SURVEYING

PROJECT NUMBER  
**472-82358**

DRAWN SVA	DESIGN SVA	REVIEW SVA	DATE 3/21/94	UTILITY	SRB JOB 70E
--------------	---------------	---------------	-----------------	---------	----------------