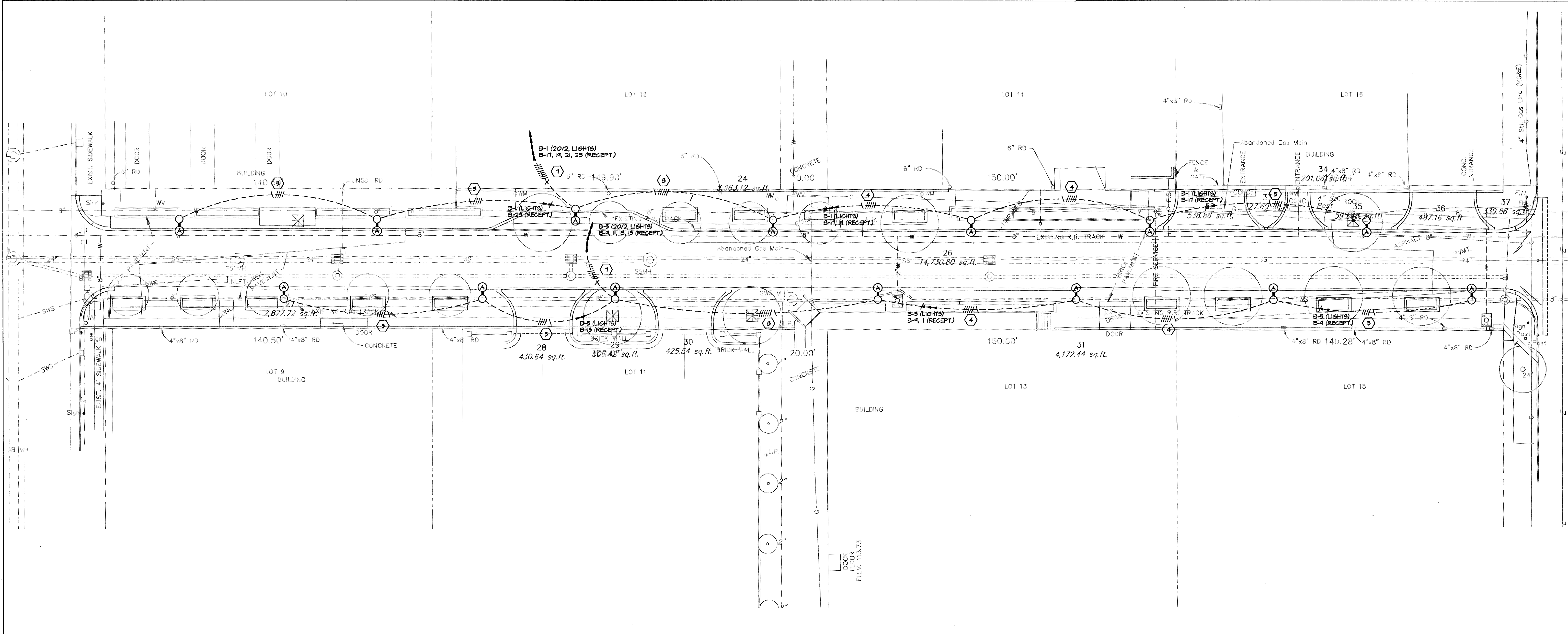
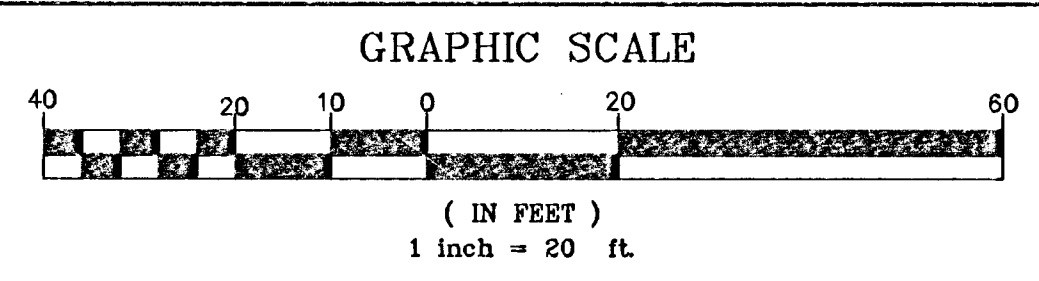


S.V.A. DWG. NAME: D:\94001\4001E04; DATE: 03/21/94; TIME: 09:01



**MOSLEY STREET LIGHTING PLAN**



**LIGHT POLE LOCATIONS  
MOSLEY**

STATION	LOCATION
0+88.8	15.5' LI.
1+10.9	15.5' RI.
1+47.9	15.5' LI.
1+91.9	15.5' RI.
2+28.7	24.0' LI.
2+52.2	15.5' RI.
3+22.4	15.5' LI.
3+65.6	15.5' RI.
4+04.5	15.5' LI.
4+52.3	15.5' RI.
4+83.4	15.5' LI.
5+37.1	15.5' RI.
6+78.0	15.5' LI.
6+22.1	15.5' RI.

**FEEDER SCHEDULE**

FEEDER IDENT.	CONDUCTORS		GROUND SIZE	ISOLATED SIZE	CONDUIT SIZE
	SETS	QUANT. PER SET			
1	1	4 #3 THHN	-----	-----	1 1/4"
2	1	4 #3 THHN	#2	-----	1 1/4"
3	1	6 #6 THHN	#10	-----	1"
4	1	5 #8 THHN	#10	-----	1"
5	1	4 #10 THHN	#10	-----	3/4"
6	1	5 #10 THHN	#10	-----	3/4"
7	1	8 #6 THHN	#10	-----	1 1/4"



**Stefan Borgelli**  
Associates Inc.  
Electrical Engineering and Design  
628 N. Broadway, Suite B  
Wichita, Ks. 67214-3597  
(316) 284-3061  
FAX: (316) 284-3542

**OLD TOWN STREET IMPROVEMENTS - PH. 2  
MOSLEY**

**SRB** 841 SOUTH HILLSIDE WICHITA, KANSAS 67211 316-852-7754 FAX 852-7932

**SAVOY, RUGGLES & BOHM, P.A.**  
ENGINEERING & SURVEYING

PROJECT NUMBER  
**472-82373**

DRWN SVA	DESIGN SVA	REVIEW SVA	DATE 3/21/94	UTILITY	SRB JOB 70E
-------------	---------------	---------------	-----------------	---------	----------------

23  
31