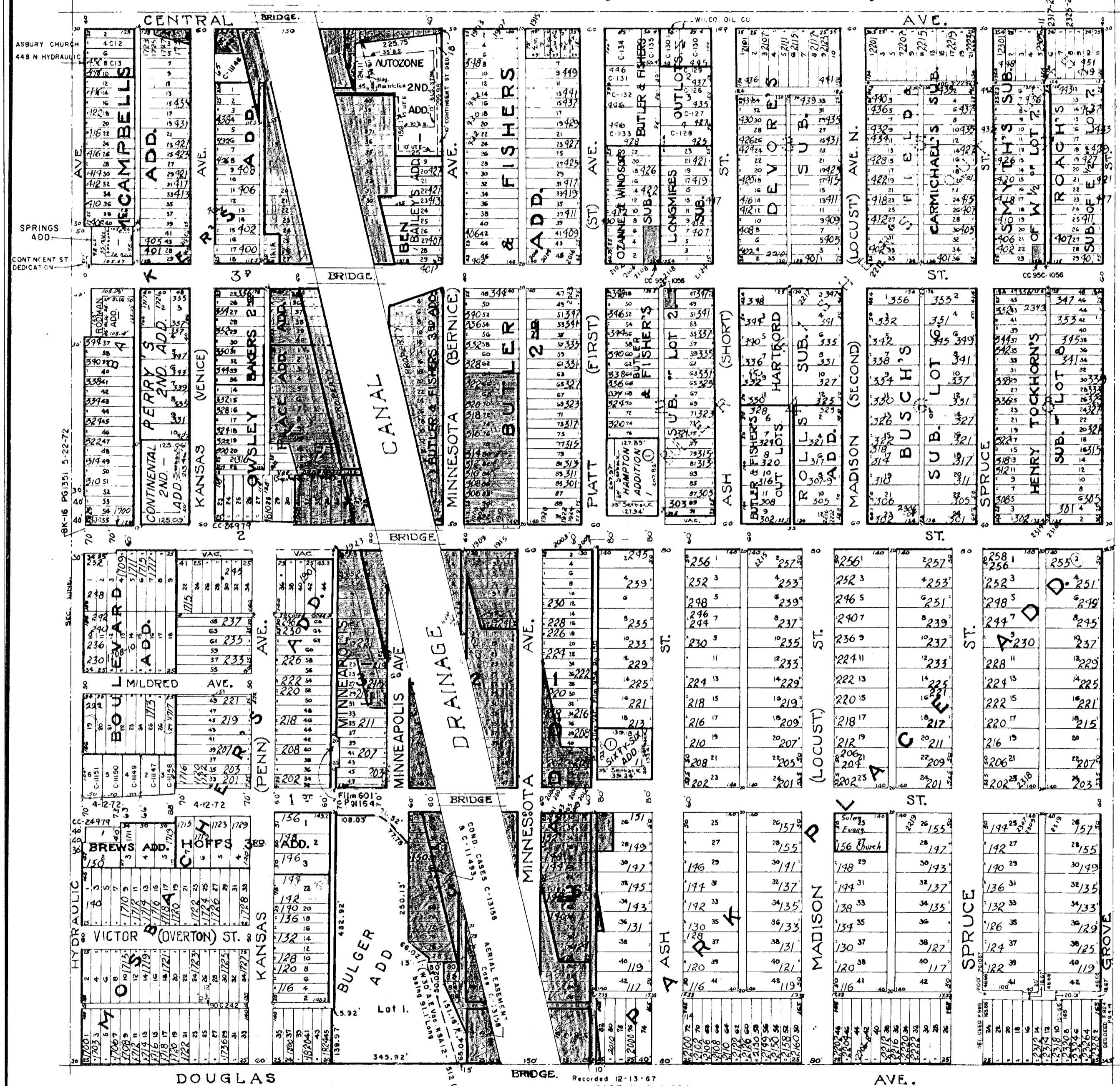


SCALE 1" = 400'

N.W. 1/4 SEC. 22, TWP. 27, R. 1 E.

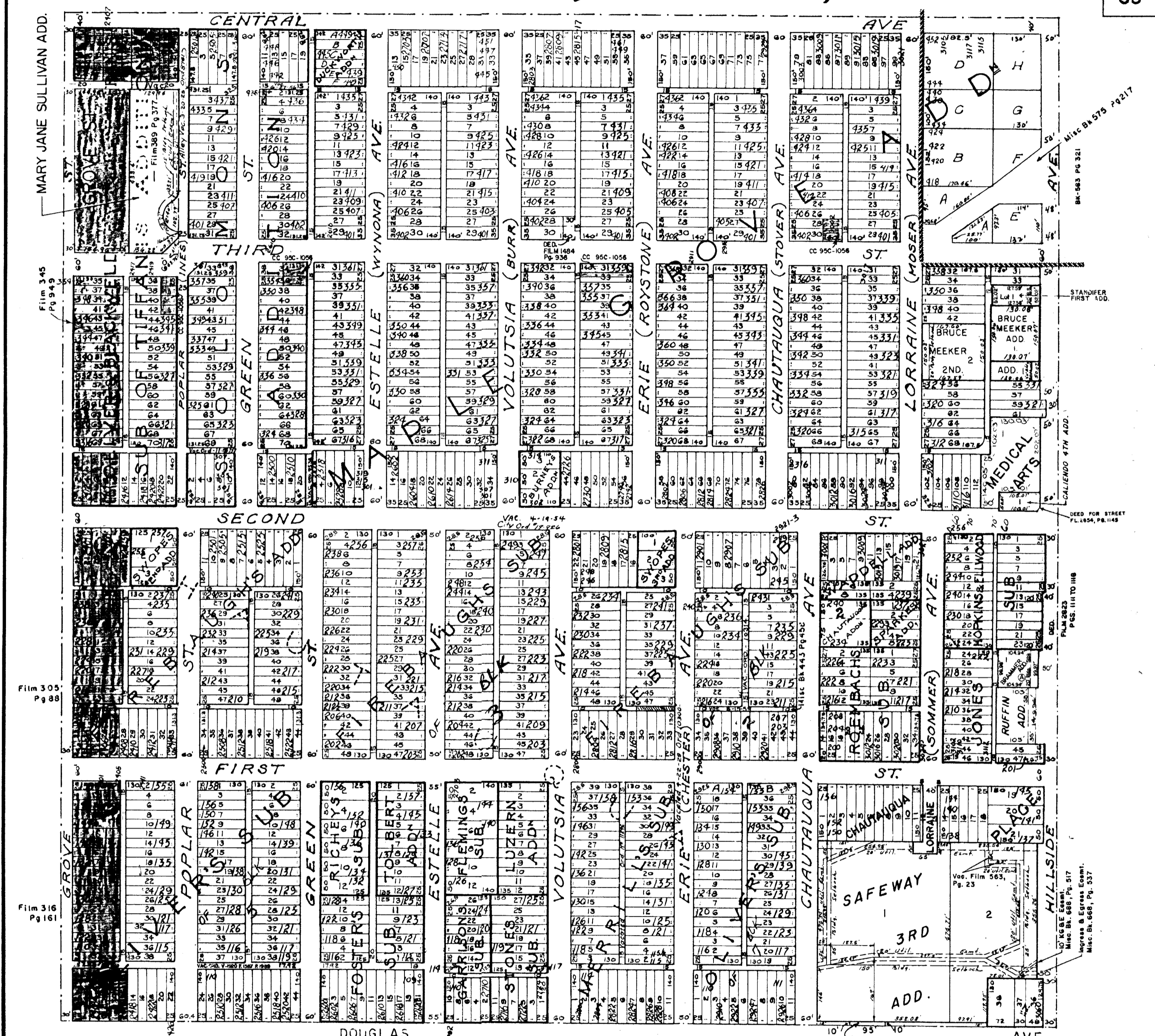
WI 86



THIS SHEET PREPARED UNDER SUPERVISION OF JAMES ALFORD, SEDGWICK COUNTY CLERK

N.E. 1/4 SEC. 22, TWP. 27, R. 1 E.

WI 85



SEDGWICK COUNTY CLERK

THE CITY OF WICHITA

QUARTER SECTIONS AT FIRST ST. AND GROVE

JAMES ARMOUR P.E. - CITY ENGINEER

PROJECT NUMBER	OCA
DATE	706912
AUG 04	SHEET 5 OF 5

CITY ENGINEER'S OFFICE
CITY HALL - SEVENTH FLOOR
425 NORTH MAIN STREET
WICHITA, KANSAS 67202
(316) 268-5001
(316) 268-4114 FAX

14-04-04-02