

GENERAL NOTE

THE GEOLOGICAL INFORMATION SHOWN ON THESE PLANS IS FROM STUDIES MADE IN THE FIELD AND REPRESENTS THE BEST INFORMATION AVAILABLE TO THE KANSAS DEPARTMENT OF TRANSPORTATION.

AT BORROW AREA LOCATIONS ADJACENT TO THE RIGHT OF WAY, UTILITY POLES MAY BE SET AT THE PERMANENT LOCATIONS PRIOR TO CONSTRUCTION AS APPROVED BY THE ENGINEER PROVIDED A MINIMUM VERTICAL CLEARANCE, IN ACCORDANCE WITH THE NATIONAL ELECTRICAL SAFETY CODE, IS OBTAINED. THE CONTRACTOR WILL BE REQUIRED TO WORK AROUND THESE POLES TO COMPLETE THE WORK.

ALL BORROW TO BE OBTAINED FROM AREAS PROVIDED BY THE CONTRACTOR SHALL BE APPROVED BY THE ENGINEER, BOTH AS TO SUITABILITY OF MATERIAL AND SITE LOCATION. LOCATIONS WHICH, IN THE OPINION OF THE ENGINEER, CONTAIN UNSUITABLE MATERIAL OR WILL LEAVE AN UNSIGHTLY APPEARANCE ON THE PROJECT WILL NOT BE APPROVED.

CHANNELS SHALL BE CUT AT BOX CULVERTS (UNLESS OTHERWISE NOTED) TO FLOW LINE ELEVATIONS AND TO A WIDTH OF ONE FOOT OUTSIDE OF EACH OUTSIDE WALL AND WITH SLOPES 2 TO 1 PRIOR TO CONSTRUCTION OF THE CULVERT.

EMBANKMENT QUANTITIES FOR INITIAL CONSOLIDATION AND SETTLEMENT SHOWN IN THE EARTHWORK QUANTITIES ARE SUBSIDIARY TO OTHER EARTHWORK ITEMS. MATERIAL FOR THE EMBANKMENT IS INCLUDED IN THE EXCAVATION QUANTITIES.

EXCAVATION REQUIRED FOR PLACING SELECT SOIL IS INCLUDED IN THE COMMON EXCAVATION QUANTITIES.

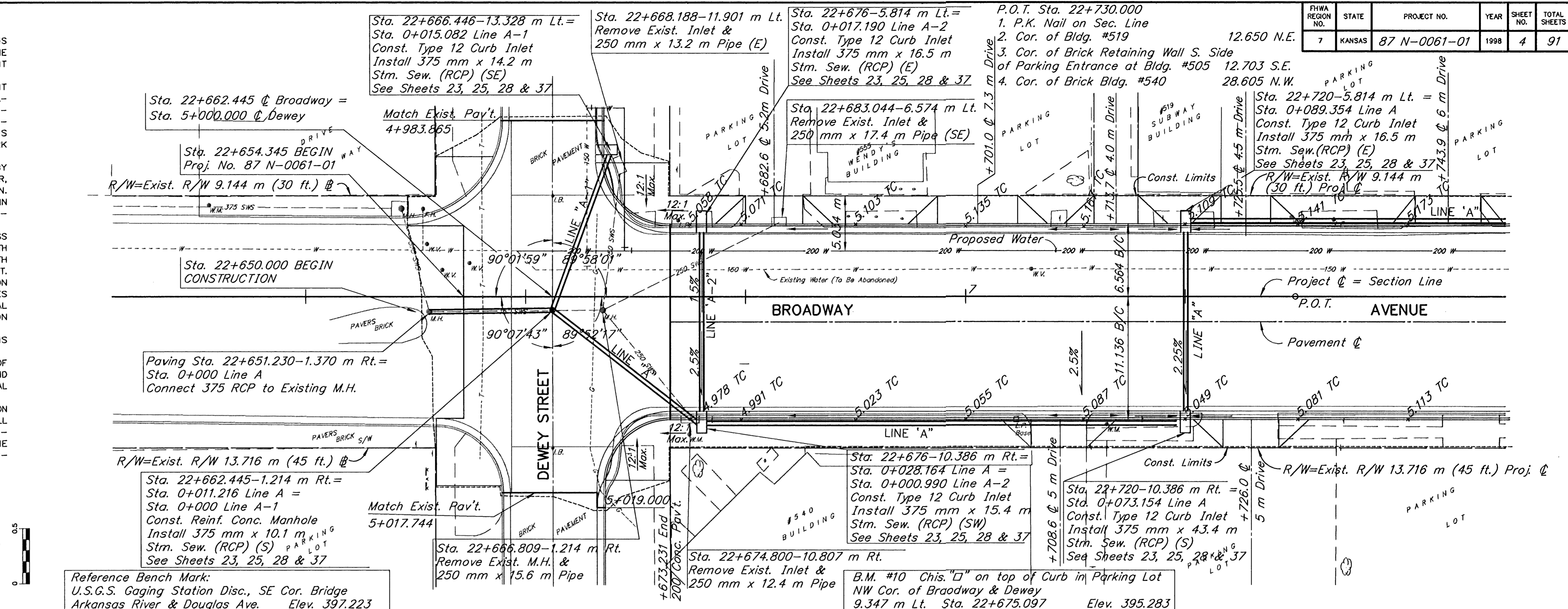
WHERE EASEMENTS ARE SHOWN ON RAILROAD RIGHT OF WAY, THE CONTRACTOR SHALL BE REQUIRED TO WORK AROUND AND NOT DISTURB THE RAILROAD COMMUNICATION OR SIGNAL POLES OR LINES.

EXCAVATION SHOWN TO BE WASTED SHALL BE WASTED ON SITES PROVIDED BY THE CONTRACTOR. THESE SITES SHALL BE APPROVED BY THE ENGINEER AS TO SUITABILITY, APPEARANCE, AND SITE LOCATION. LOCATIONS THAT, IN THE OPINION OF THE ENGINEER WILL LEAVE AN UNSIGHTLY APPEARANCE, WILL NOT BE APPROVED.



SCALE

PLAN: Lat. & Long. (meters)
PROFILE: Horiz. same as above Vert.



Reference Bench Mark:
U.S.G.S. Gaging Station Disc., SE Cor. Bridge
Arkansas River & Douglas Ave. Elev. 397.223

UTILITIES

Kansas Gas & Electric Co.
P.O. Box 208
Wichita, KS. 67201
316-261-6611

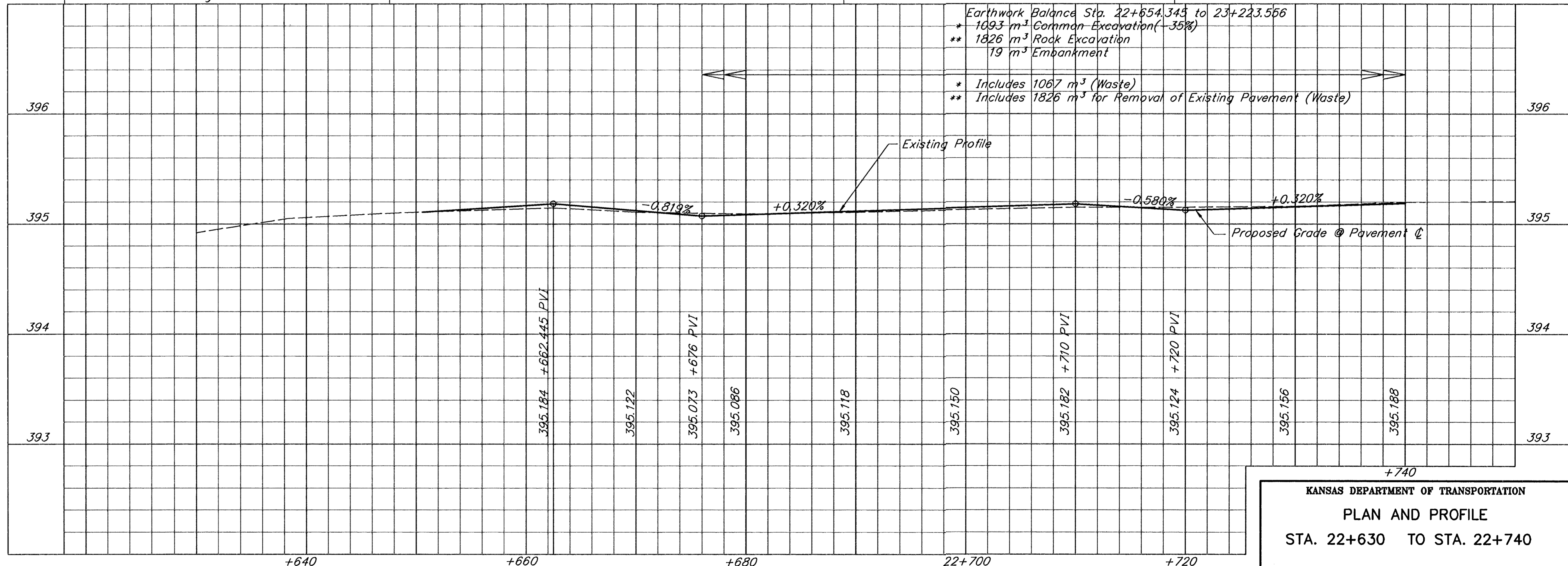
Wichita Storm Sewer Dep't
455 N. Main
Wichita, KS 67202
316-268-4461

Wichita Water Dep't
455 N Main
Wichita, KS 67202
316-268-4555

Wichita Sanitary Sewer Dep't
455 N. Main
Wichita, KS 67202
316-268-4555

KGE Gas Service
1021 E. 26th N.
Wichita, KS 67219
316-832-3101

Kansas One-Call Inc.
8100 E. 22nd., Bldg. 1700
Wichita, KS 67226
316-687-2470



Last Plot-Date: 05/18/98 Plot-Time: 1:34 P.M.

SURV. PLOT CADD DES. DR. TR. CKD. APP.