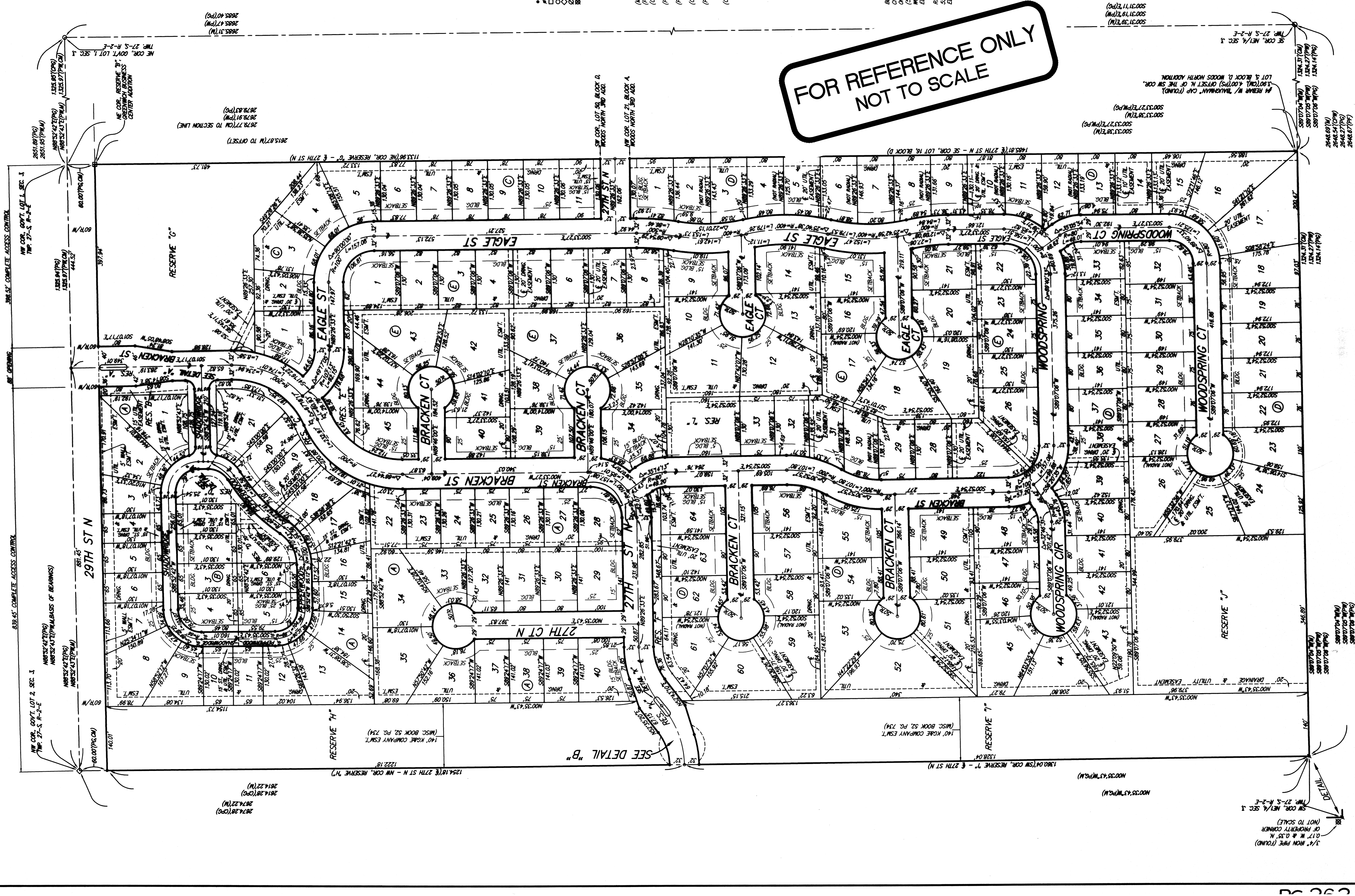


FIREFLY WAY AN ADDITION TO WICHITA, SEDGWICK COUNTY, KANSAS

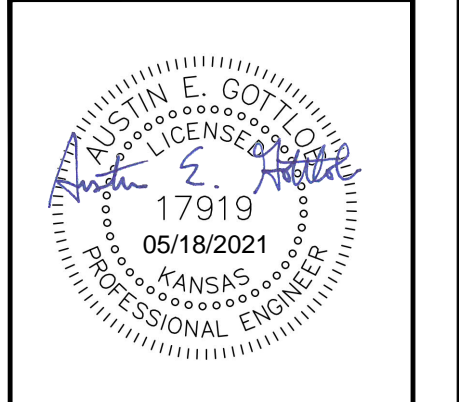


- (M) = MEASURED
- (PS) = PREVIOUS SURVEY
- (CM) = CORNER MARKED
- (F) = PLATTED MAP, PER THE FURNACE PER
- (PM) = WOODS NORTH ADDITION
- (CPM) = CALCULATED INTO PER
- (PS) = PLATTED MAP PER GREENWICH BUSINESS CENTER ADDITION
- (CPO) = GREENWICH BUSINESS CENTER ADDITION

LOT	BLOCK	ELEVATION	MINOR
1-4	C	1305.5	
24-26	D	1307.8	
41-43	D	1307.8	

BENCHMARK: CITY OF WICHITA BENCHMARK DISC, 1307.7 E. & 146.6 N. OF THE COR. LOT 1, BLOCK D, FIREFLY WAY, LOT 21, BLOCK A, WOODS NORTH ADDITION, NE COR. LOT 21, BLOCK A, WOODS NORTH ADDITION, ELEV. = 1307.89 MINORS
RAILROAD SPINE IN E. FACE OF E. 7^{1/2} POLE, 39.9' W. & 55.4' S. OF NE COR. RESERVE 7, FIREFLY WAY, ELEV. = 1309.54 MINORS

FOR REFERENCE ONLY
NOT TO SCALE



B
BAUGHMAN COMPANY

315 Ellis St.
Wichita, KS 67211
316-262-7271
BaughmanCo.com

FIREFLY WAY ADDITION Phase 5	
COPY OF PLAT	
WATER DISTRIBUTION SYSTEM	
PROJECT NUMBER: 20-06-E607	
DESIGN:	DRAWN:
DATE: April 30, 2021	
SHEET	OF
14	14

File: E:\Projects\Firefly Way-Ritchie_16-04-P195\Engineering\Phase 5\WTR\WTR.dwg