

GENERAL NOTES:

- The Contractor shall comply with all applicable safety regulations. All construction shall be completed following current City Standard Specifications and Special Provisions.
- Contractor will be required to provide notice to utility companies a minimum of seventy-two (72) hours prior to any excavation, as follows:

Kansas One-Call 687-2470

The Contractor must notify the following in case of an emergency:

AT&T	1-800-246-8464
Black Hills Energy	1-800-694-8989
City of Wichita Water & Sewer	1-316-219-8921
City of Wichita Stormwater	1-316-268-4090
City of Wichita Traffic	1-316-268-4034
Cox Communications	1-888-249-3530
Kansas Gas Service	1-888-482-4950
Westar Energy	1-800-544-4857

- Utility service lines, poles, etc. are to be adjusted as necessary by others prior to construction unless the plans specifically call for their adjustment by the Contractor or unless the plans specifically identify a utility to be adjusted by its owner during construction. Existing utilities and their location, as shown on the plans, represent the best information obtainable for design. The Contractor will be required to work around existing utilities within the right-of-way which do not conflict with proposed construction.

- Rubble from the removal of miscellaneous structures and excess excavation which is to be wasted shall be disposed of on sites to be provided by the Contractor. These sites shall be approved by the Engineer as to suitability, appearance and site location. Locations, in the opinion of the Engineer, that will leave an unsightly appearance will not be approved. All disposal sites must be approved by the Kansas Department of Health and Environment. Material either stockpiled or disposed of in a flood plain will require a Kansas State Board of Agriculture permit. Any material dumped in waters of the United States or wetlands is subject to U.S. Corps. of Engineers permitting regulations. Any material buried or stockpiled beyond approved construction limits will require additional archaeological investigations unless buried in a previously approved borrow location.

- Trees and shrubs in public right-of-way which are in direct conflict with proposed new construction shall be removed by the Contractor with the City Engineer's approval. Trees and shrubs which are not in direct conflict with proposed new construction shall be saved and protected from damage.

- The Contractor shall give all property owners and/or tenants of developed property abutting the construction of this project a minimum of ten (10) days notice prior to start of construction.

- The Contractor shall be responsible for preserving property irons. The Contractor will be required to re-establish any property irons which are damaged or destroyed by his construction operations. Such irons shall be re-established by a licensed land surveyor in accordance with state laws.

- All elevations shown are NAVD 88.

- A saw cut of at least one-half the depth of existing surface courses or one-fourth the depth of the existing total pavement thickness shall be provided at locations where proposed construction abuts the existing surface course or pavement for which partial removal of that surface or pavement is required. Sawed joint to facilitate removal within three (3) feet of existing joints will not be permitted and for such instances the limits of removal shall extend to the existing joint. Such saw cuts will not be paid for directly and this cost shall be considered as subsidiary to the removal of the surface or pavement.

- Limits of earthwork shall match existing ground elevations at the right-of-way line unless otherwise noted on the plans with a new finished grade elevation. When a new finished grade elevation is shown, the earthwork shall extend one foot beyond the right-of-way line and then slope up or down using permissible slopes to match the existing ground surface.

- All existing and proposed erosion control measures including silt fencing, erosion control mat, straw bales, inlet barriers, and const. entrance shall be maintained throughout construction by the contractor and until project is accepted by the City of Wichita. The on-site engineer shall complete weekly reports on the status of erosion control measures. The contractor shall be required to comply with maintenance and/or replacement of erosion control measures as determined by the on-site engineer until project is accepted by City of Wichita. Maintenance and/or replacement of erosion control measures to be paid by L.S. bid item "Maintain Existing BMPs".

- All disturbed areas are to be seeded as follows:

Seed -- Rye grass; 5 lbs./1000 Sq. Ft.

All costs associated with seeding including mobilization, preparation of ground, seeding, fertilizing, mulching, etc. shall be included in the L.S. bid item "Seeding".

- The developer for this project is Ritchie Development, Jeff Mullen, (316)684-7300.

- Construction Schedule: Contractor shall phase storm sewer construction so street paving can begin as soon as possible.

STREET PAVING FOR WOODSPRING WITH INCIDENTAL SWS IMPROVEMENTS to serve FIREFLY WAY ADD. Ph. 5

Woodspring and Bracken St. from the west line Lot 24, Block E, west and north to the north line of Lot 27, Block E.
Woodspring Ct. from west line of Lot 18, Block D, west to and including the cul-de-sac
Woodspring Cir. from the west line of Woodspring, west to and including the cul-de-sac

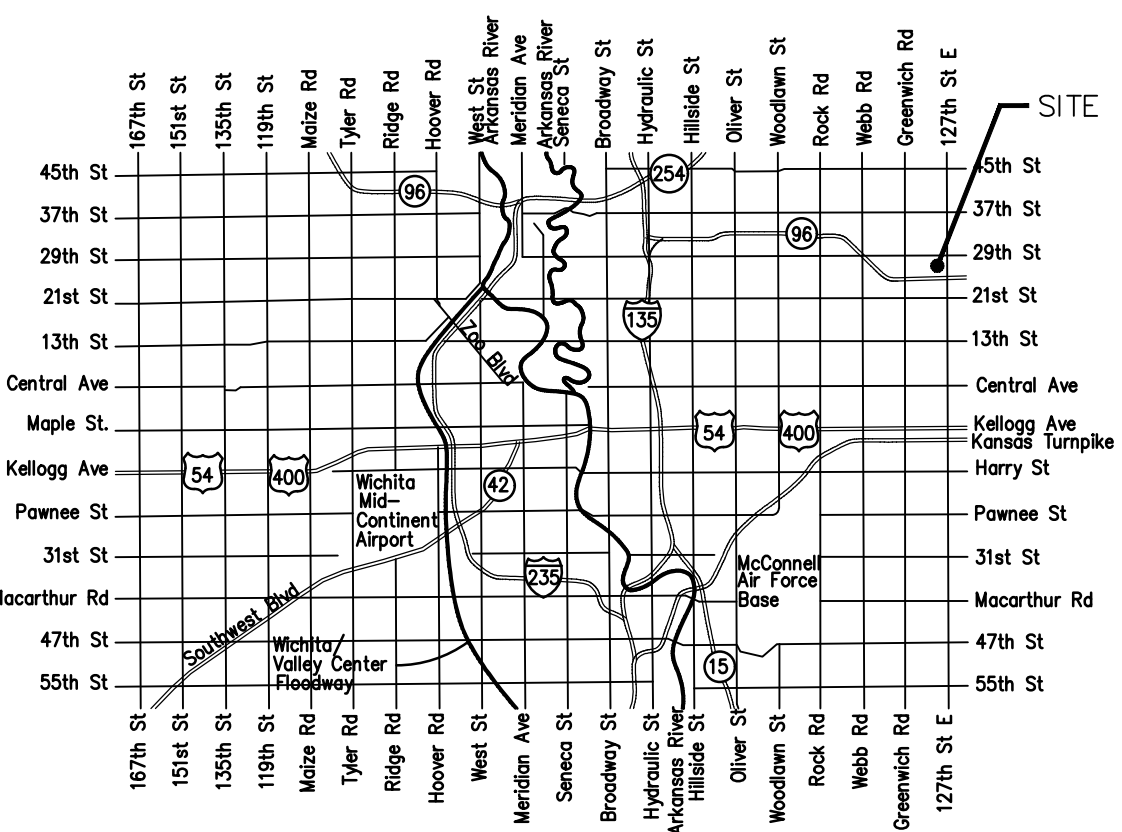
CITY OF WICHITA, KANSAS

Gary Janzen, P.E. City Engineer

Project Number 472-85354

Org Code 47455717

Munis Number E7157



Vicinity Map

Sheet Index

Title Sheet	1
Woodspring/Bracken	2
Woodspring Cir.	3
Woodspring Ct.	4
SWS Line 1	5
SWS Lines 2 & 3	6
SWS Line 4	7
Erosion Control/Esmt. Grading Plan	8
Asphalt Paving Detail	9
Curb & Gutter Detail	10
Sign Detail	11
Pavement Underdrain Detail	12
Type 1A Inlet L=5' and 10' Detail	13
Precast Concrete Manhole Detail	14
MH-Inlet Frame & Cover Detail	15
Backyard Inlet Detail	16
Erosion Control BMP Details	17-21
Street X-Sections	22-26
Coordinate Sheet	27
Copy of Plat	28

Stormwater Certification:

New Development or Redevelopment (Circle One)

Stormwater Permit # _____

NOI Permit # S-WA20-0088 KSR 112607

These construction plans were prepared in accordance with the current Stormwater management Regulations as set forth in the City of Wichita's Stormwater Management Ordinance 16.32 and the policies/guidelines presented in the Wichita/Sedgwick County Stormwater Manual.

Site Area (Acres) = 79.5 Ac.

Disturbed Area (Acres) = 79.5 Ac.

Water Quality Treatment: Wet Ponds

Downstream Channel Protection: Wet Ponds

Detention: Wet Ponds

The BMP used for this development is Wet Ponds

Project Earthwork Totals

Excavation = 723 C.Y.

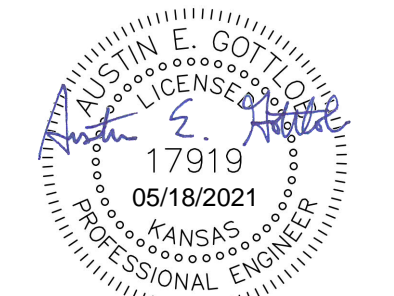
Loose Fill = 486 C.Y.

Compacted Fill = 498 C.Y.

Borrow Exc. = 506 C.Y.

Total Project Length

1,092 L.F. = 0.21 Miles



May 17, 2021

BAUGHMAN COMPANY
315 Ellis St. Wichita, KS 67211 316-262-7271
BaughmanCo.com

Benchmarks

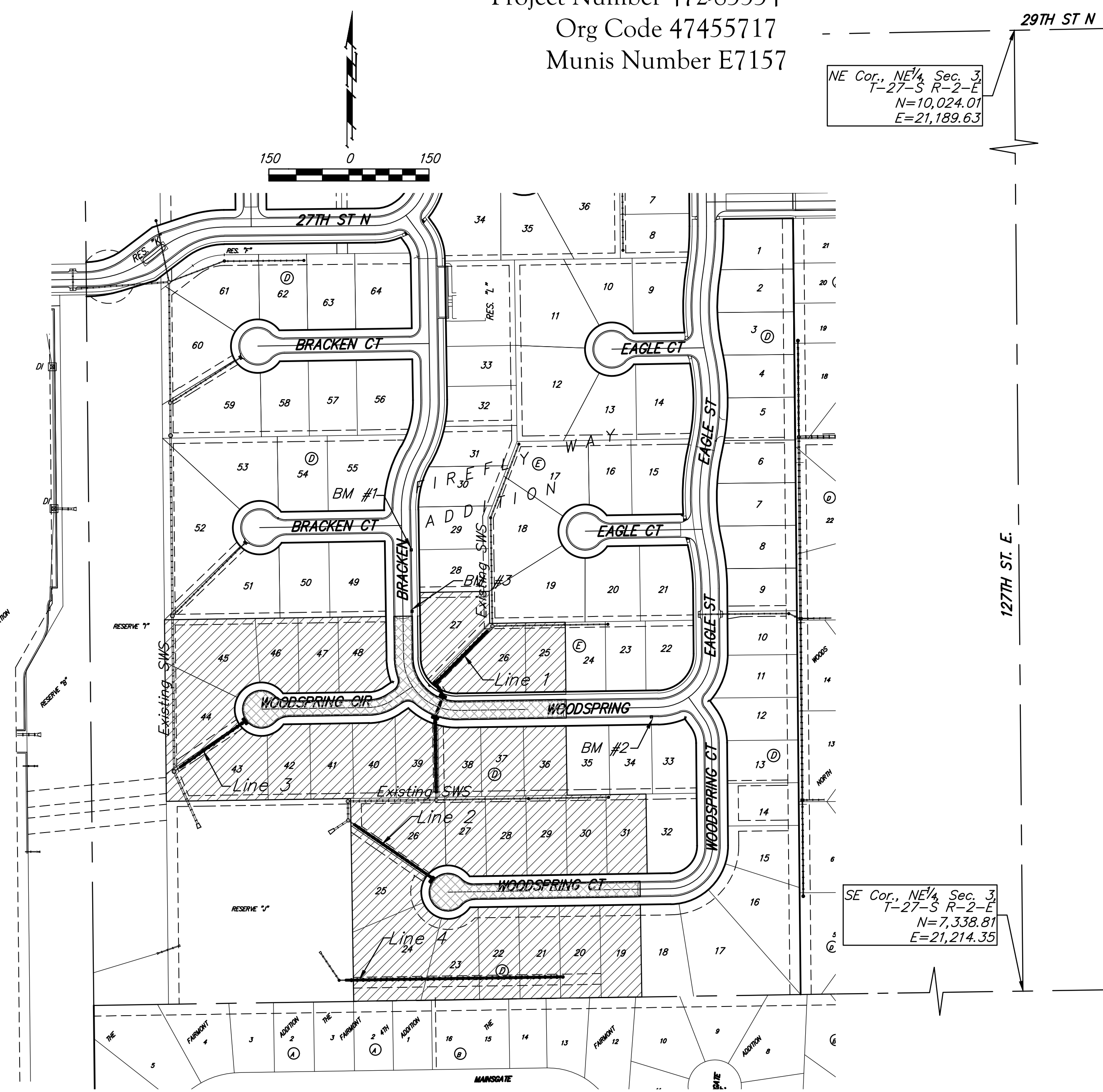
BM #1: "□" on top of curb near the NW corner of Lot 28, Block E, Firefly Way Addition.
Elev. = 1399.50 NAVD88

BM #2: "□" on top of curb near the NE corner of Lot 34, Block D, Firefly Way Addition.
Elev. = 1400.76 NAVD88

BM #3: "□" on top of curb near the NW corner of Lot 27, Block E, Firefly Way Addition.
Elev. = 1398.85 NAVD88

Benefit District

Proposed Streets



E:\Projects\Firefly Way\Richie_16-04-P195Engineering\Phase 5\SWS\STR\Revs.dwg