

**BENCHMARKS:**

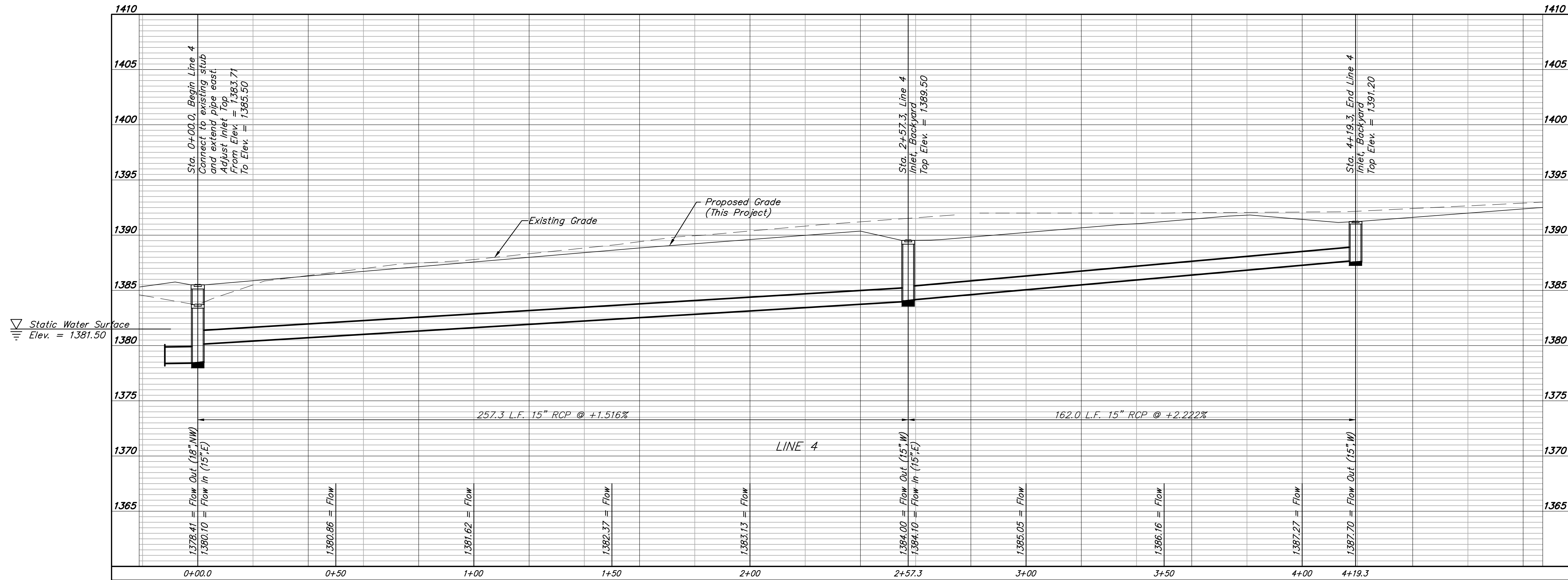
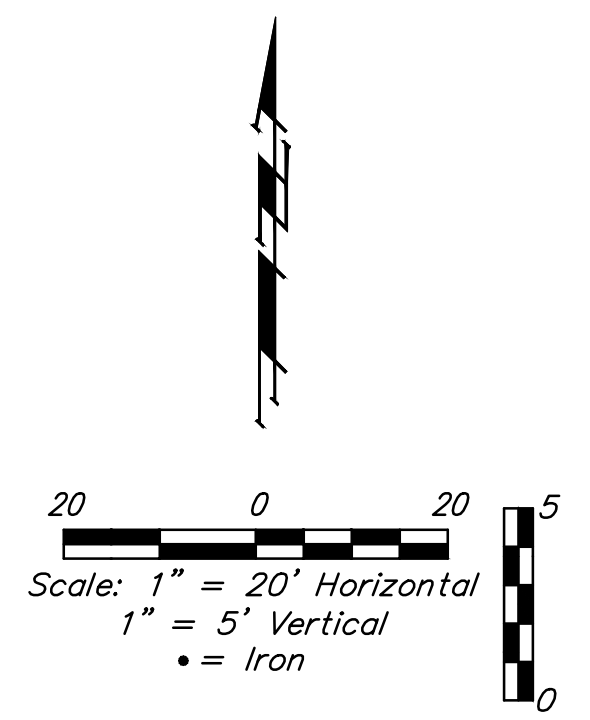
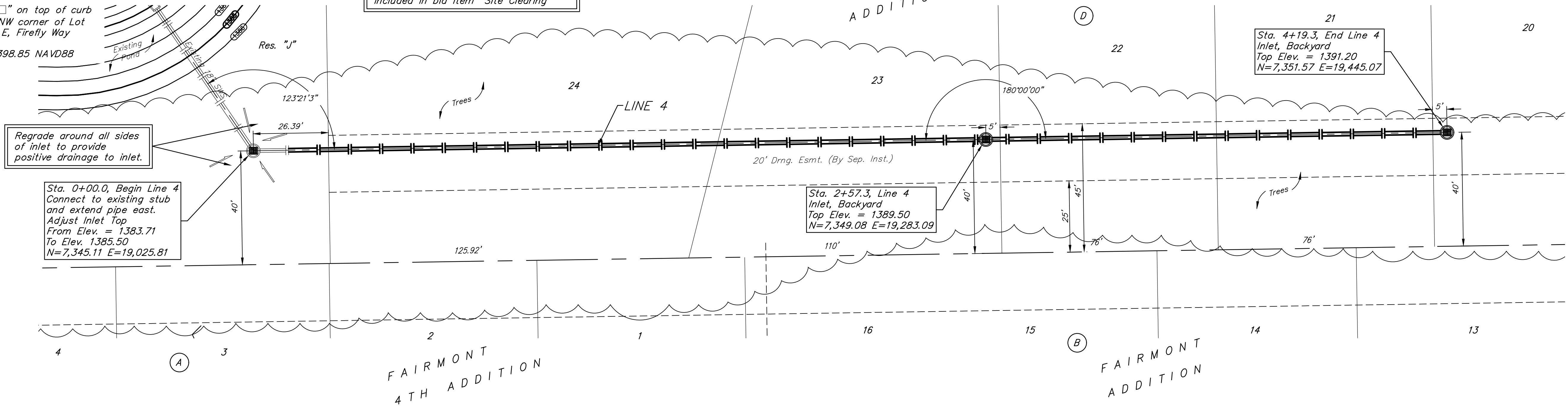
BM #1: "□" on top of curb near the NW corner of Lot 28, Block E, Firefly Way Addition.  
Elev. = 1399.50 NAVD88

BM #2: "□" on top of curb near the NE corner of Lot 34, Block D, Firefly Way Addition.  
Elev. = 1400.76 NAVD88

BM #3: "□" on top of curb near the NW corner of Lot 27, Block E, Firefly Way Addition.  
Elev. = 1398.85 NAVD88

Trees in conflict with storm sewer construction to be removed by contractor. To be paid for as lump sum bid item "Site Clearing"

All other trees shall remain and be protected from damage during construction. Overhanging limbs shall be trimmed by the Contractor using a chain saw only as necessary for construction and with approval of the Engineer. Cost of tree trimming to be included in bid item "Site Clearing"





**BAUGHMAN COMPANY**  
315 Ellis St.  
Wichita, KS 67211  
316-262-7271  
BaughmanCo.com

---

FIREFLY WAY ADDITION  
Phase 5

**LINE 4**

STORM WATER SEWER IMPROVEMENTS

PROJECT NUMBER:  
20-06-E608

DESIGN: AEG DRAWN: TMS

DATE: May 17, 2021

SHEET 7 OF 28

File: E:\Projects\Firefly Way-Ritchie\_16-04-P195\Engineering\Phase 5\Sts\Sts\STRaw.dwg