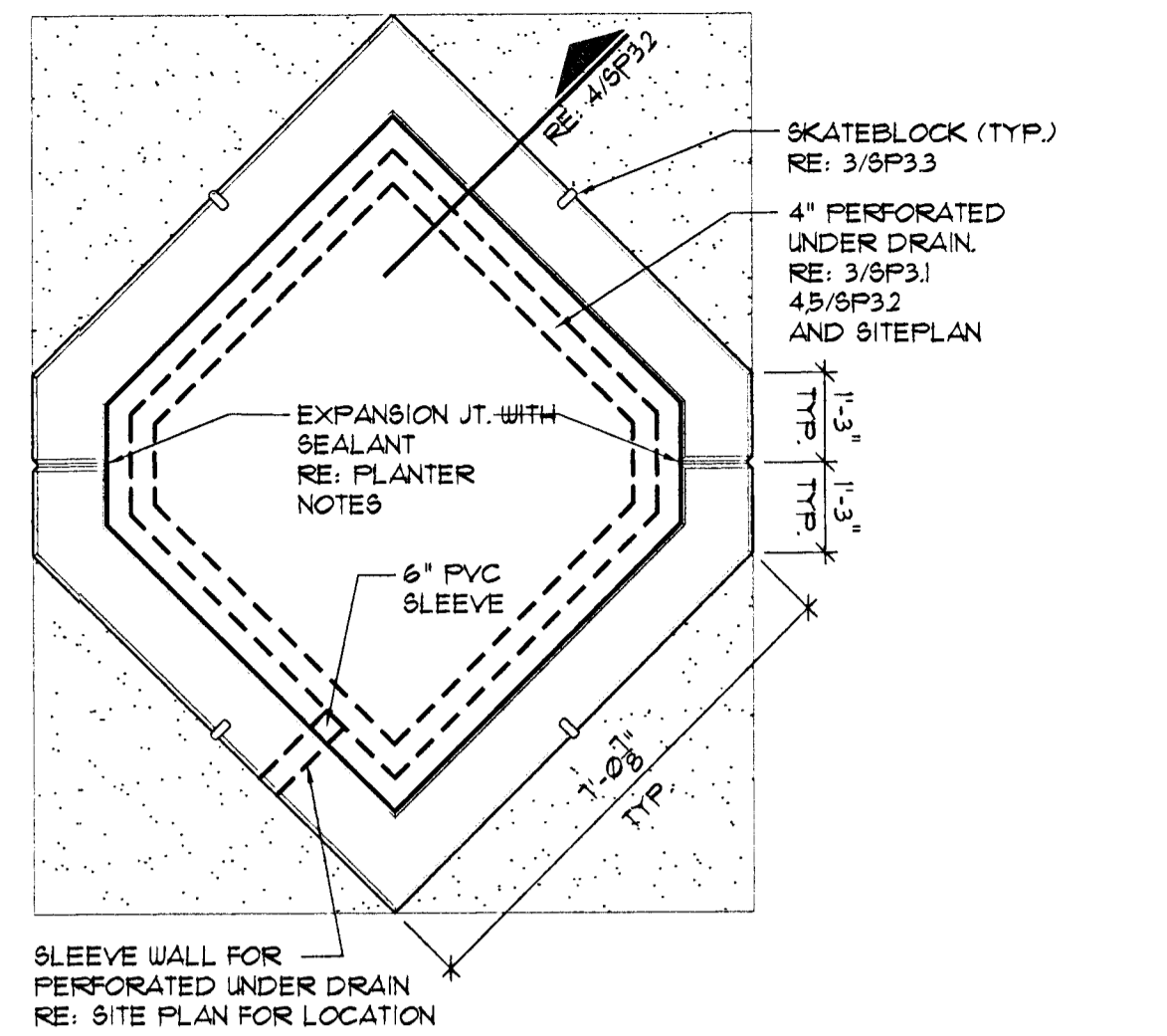
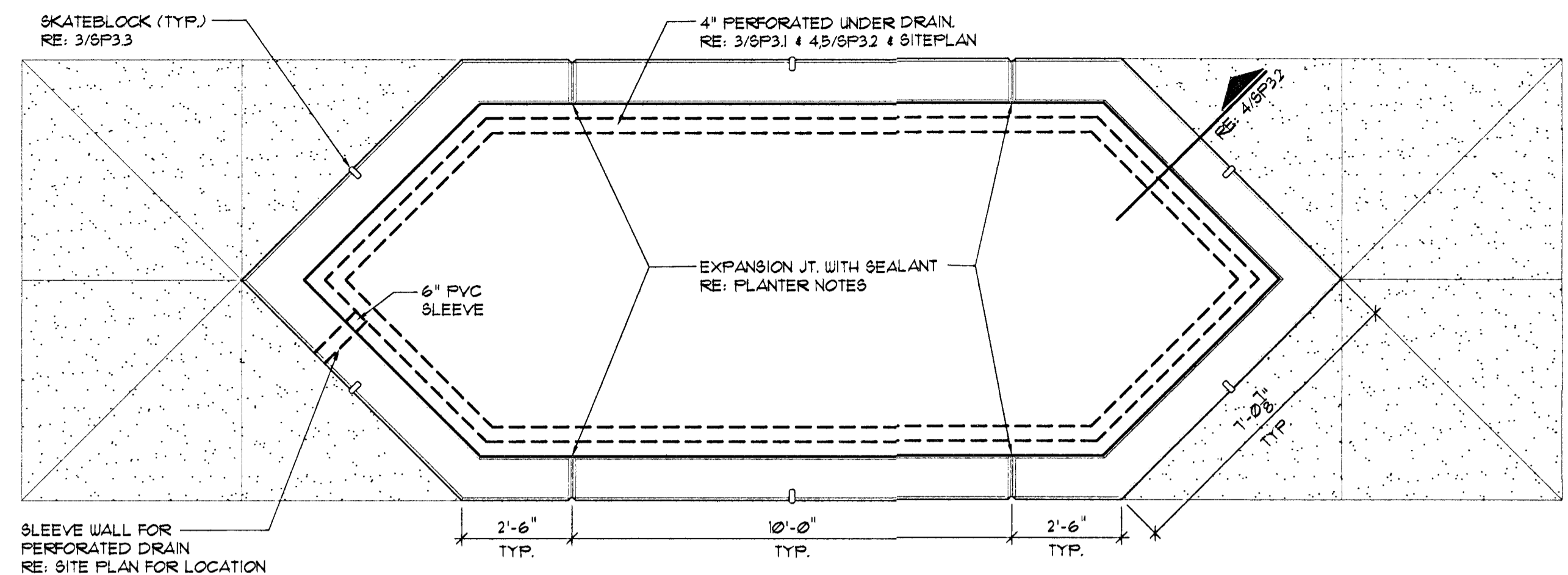


1 RAISED PLANTER DETAIL PLAN A
SCALE: 3/8" = 1'-0"

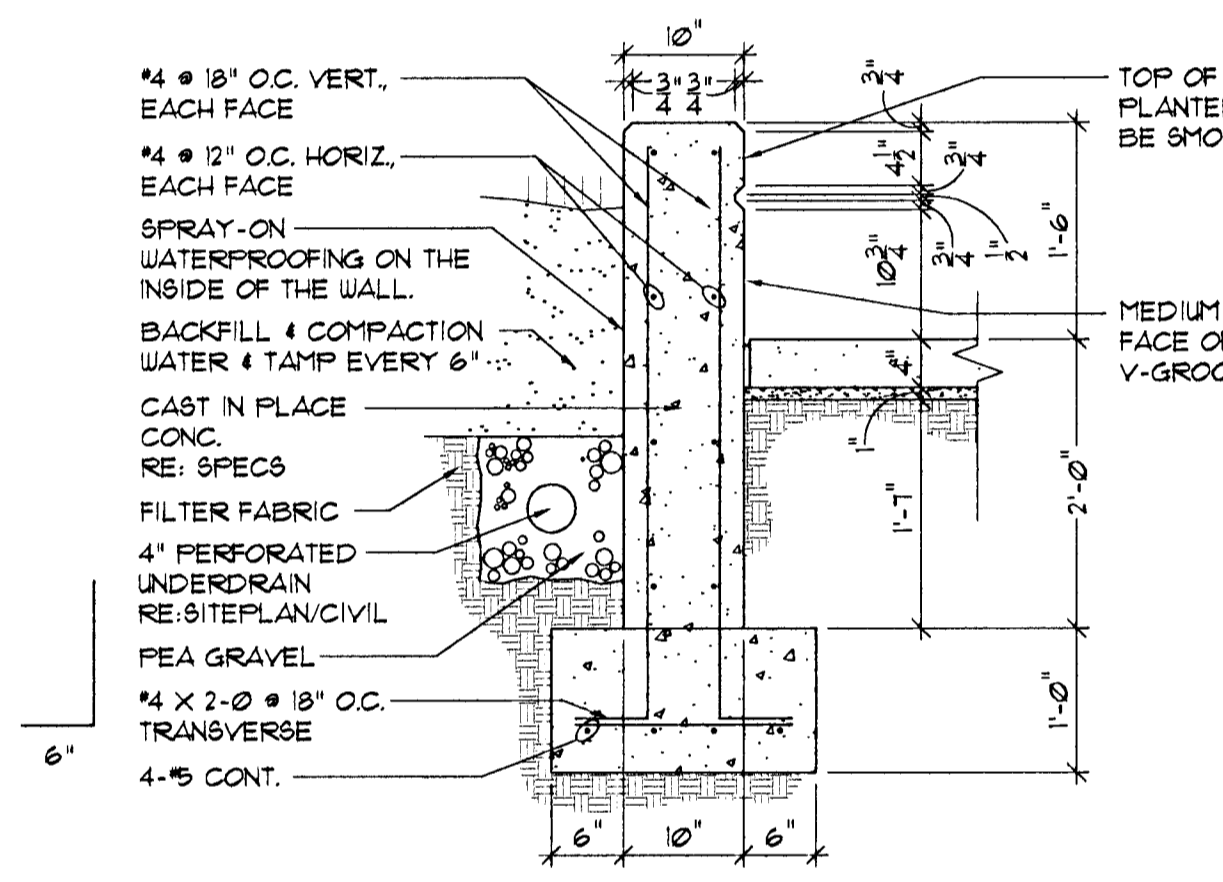


2 RAISED PLANTER DETAIL PLAN B
SCALE: 3/8" = 1'-0"



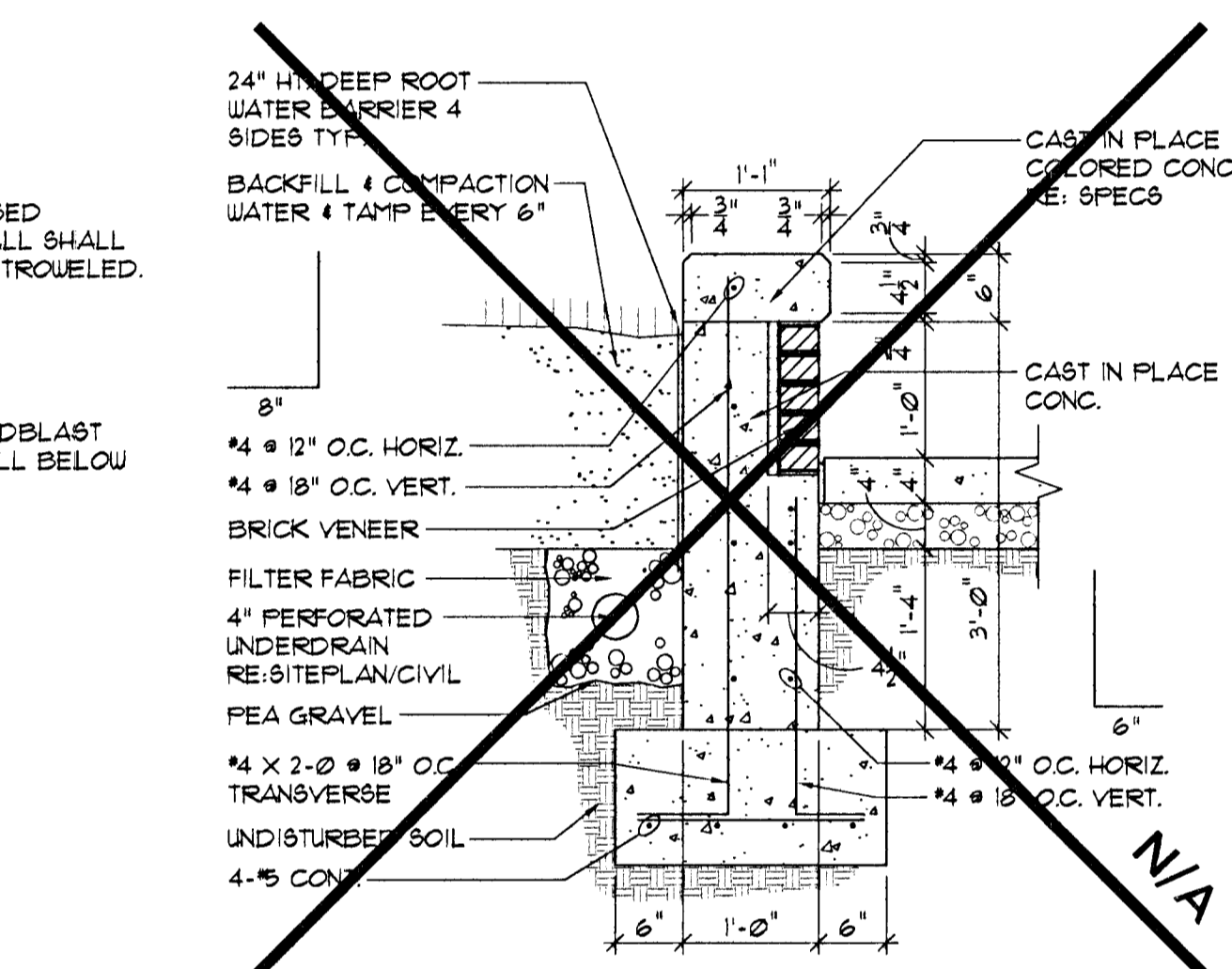
3 RAISED PLANTER DETAIL PLAN C
SCALE: 3/8" = 1'-0"

- RAISED PLANTER NOTES:**
- 1/2" EXPANSION JT. FOR CONC. WALK SHALL BE "SONOLASTIC EXPANSION-JOINT FILLER": SONNEBORN, CHEMREX INC. OR APPROVED EQUAL.
 - SEALANT SHALL BE A MULTI-PART POURABLE URETHANE SEALANT FOR USE T: "FOURTHANE": W.R. MEADOWS, INC. "THC 900": TREMCO INC. OR APPROVED EQUAL.
 - SKATEBLOCKS SHALL BE CENTERED ALONG STRAIGHT SECTION OF RAISED PLANTER WALL. INSTALLATION AS PER 4/8P3.3.



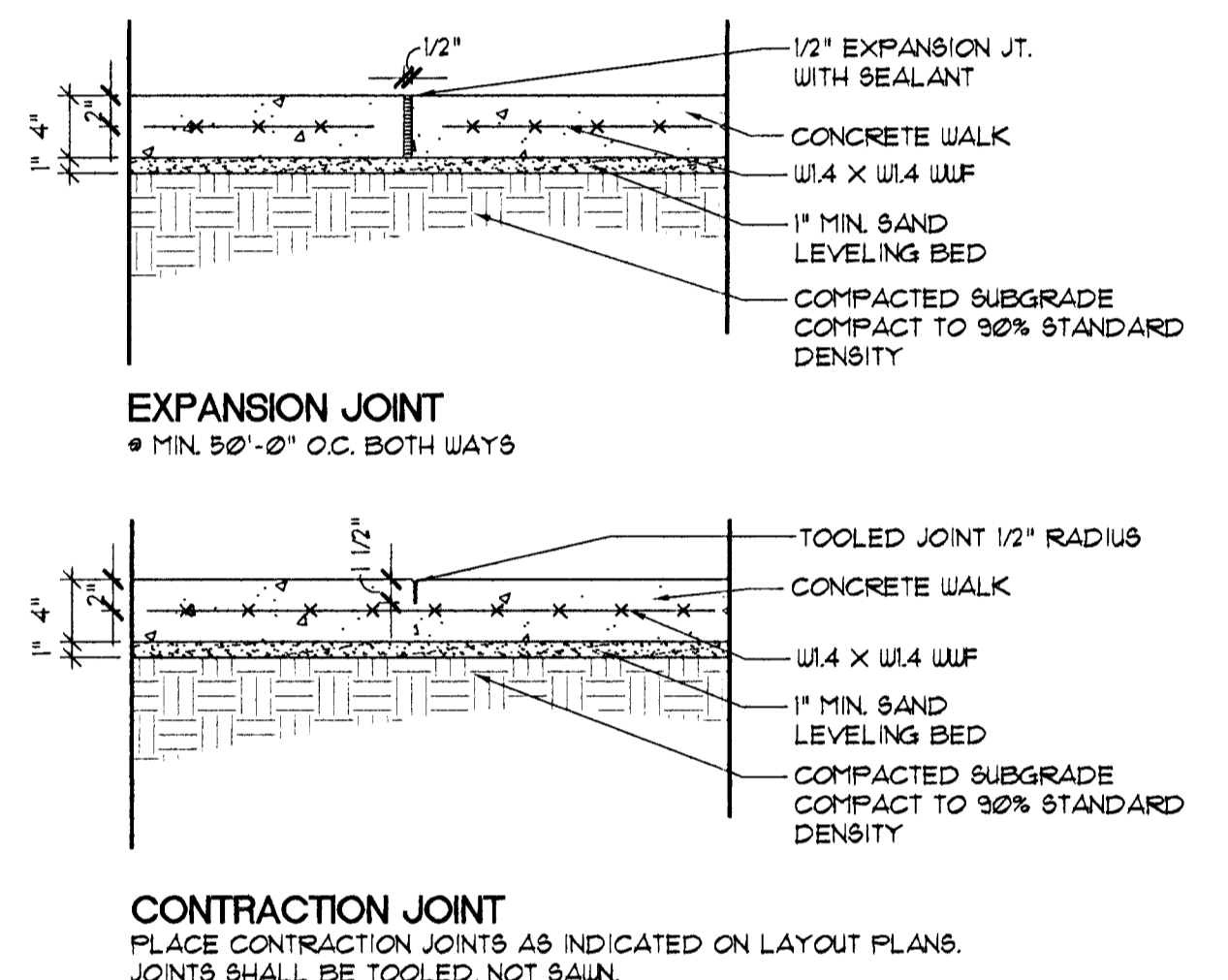
4 RAISED PLANTER WALL SECTION
SCALE: 3/4" = 1'-0"

RAISED PLANTER WALL NOTES:
TOP OF WALL SHALL BE LEVEL WITH HEIGHT DIMENSION SHOWN ON DETAIL AT THE STORE-SIDE OF THE PLANTER WALL WHERE THE SIDEWALK IS THE HIGHEST ELEVATION. THE HEIGHT FROM SIDEWALK TO TOP OF WALL WILL VARY AS SIDEWALK CHANGES ELEVATION BECAUSE OF SLOPE.



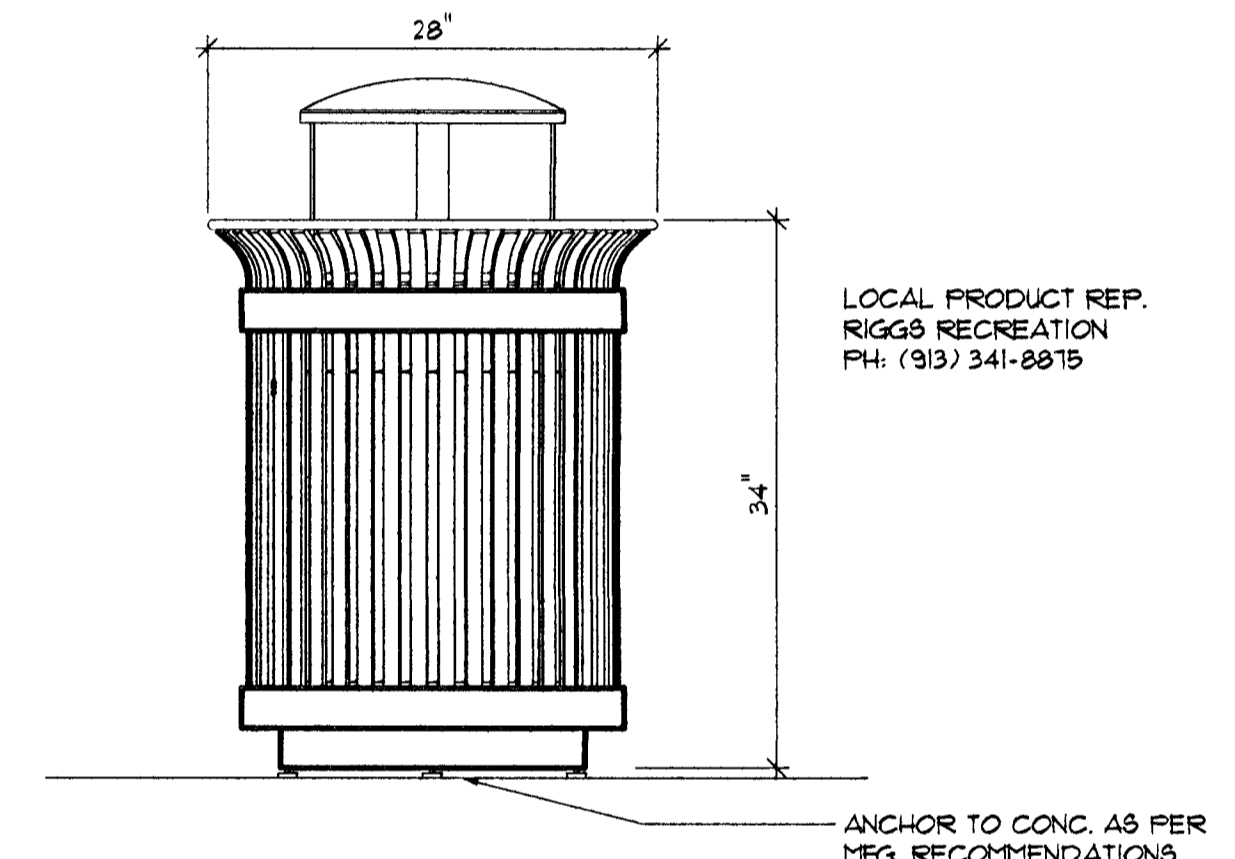
5 RAISED PLANTER WALL SECTION (ALT. #1)
SCALE: 3/4" = 1'-0"

ALT. #1A: CAP SHALL BE CAST STONE IN LIEU OF CAST IN PLACE CONC. COLOR TO MATCH CAST STONE CAP AT CLOCK TOWER PLANTER WALL. RE: 5/A13



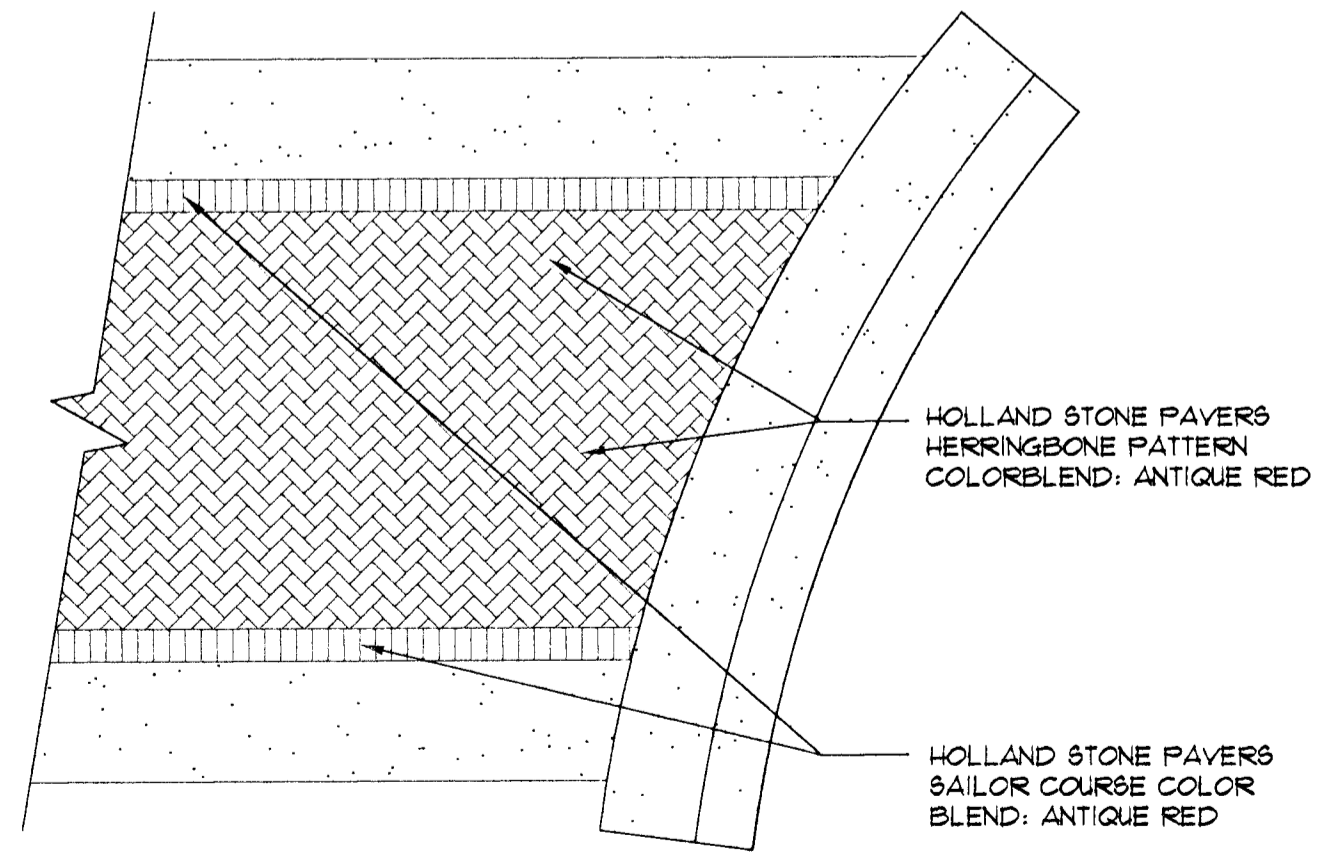
6 4' CONCRETE SIDEWALK DETAILS
SCALE: 1" = 1'-0"

- SIDEWALK NOTES:**
- ALL CONCRETE WALK AND STOOFS AT DOORWAYS SHALL BE THICKENED TO 6" AND FINED INTO FOOTINGS AT 18" O.C.
 - 1/2" EXPANSION JT. FOR CONC. WALK SHALL BE "SONOLASTIC EXPANSION-JOINT FILLER": SONNEBORN, CHEMREX INC. OR APPROVED EQUAL.
 - SEALANT SHALL BE A MULTI-PART POURABLE URETHANE SEALANT FOR USE T: "FOURTHANE": W.R. MEADOWS, INC. "THC 900": TREMCO INC. OR APPROVED EQUAL.
 - SAND LEVELING BED, JOINT SEALANTS, ETC. SHALL BE SUBSIDIARY TO 4" CONC. SIDEWALK.



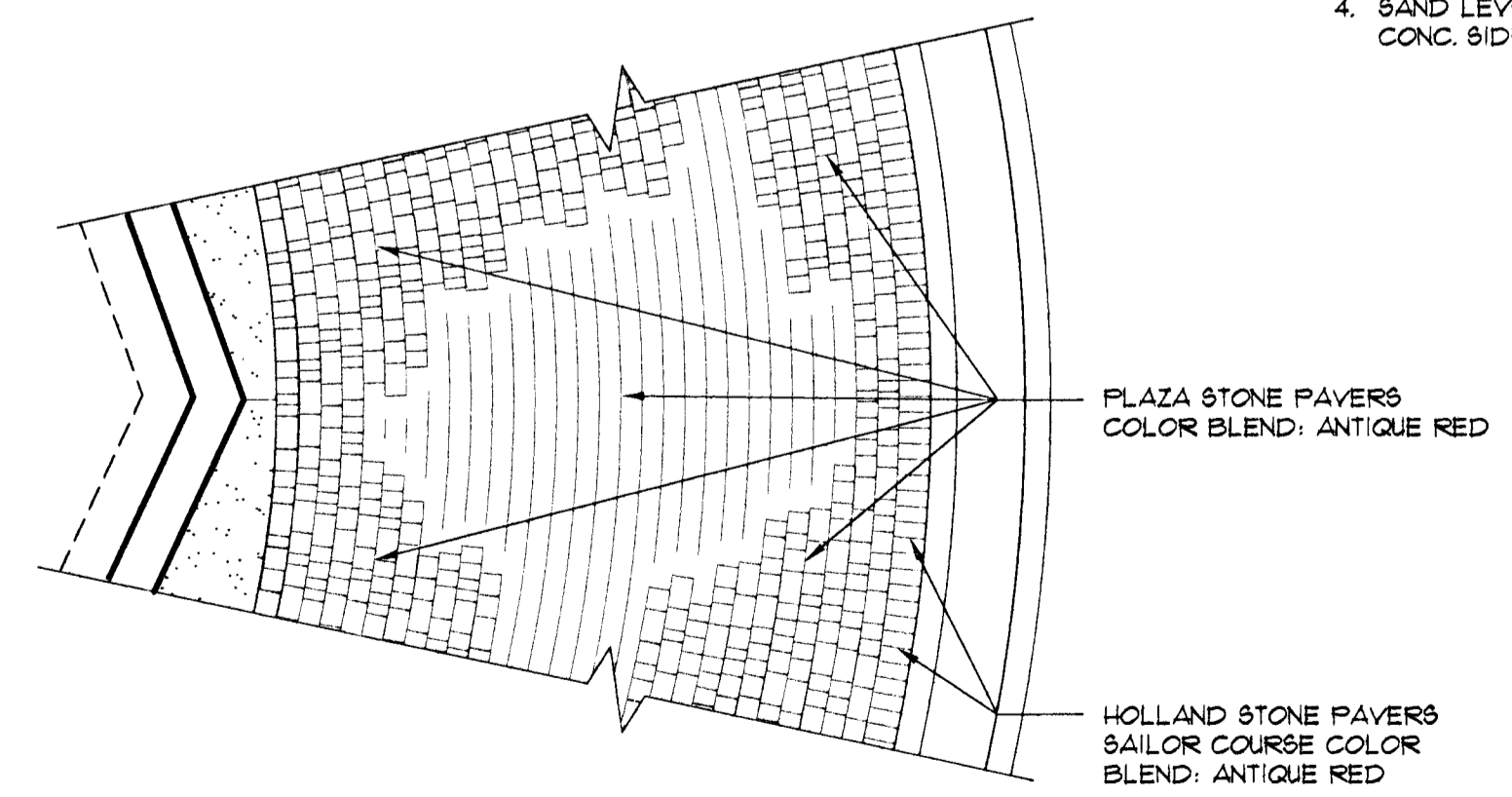
7 TRASH RECEPTACLE (VICTOR STANLEY 8-42 WITH 8-2 LID)
SCALE: 1" = 1'-0"

- TRASH RECEPTACLE NOTES:**
- 14 EXISTING TRASH RECEPTACLES WITHIN THE PROJECT AREA SHALL BE REMOVED, STORED, AND RE-INSTALLED.
 - FINAL LOCATION FOR THE 13 NEW AND 14 EXISTING TRASH RECEPTACLES AS DIRECTED BY ARCHITECT.



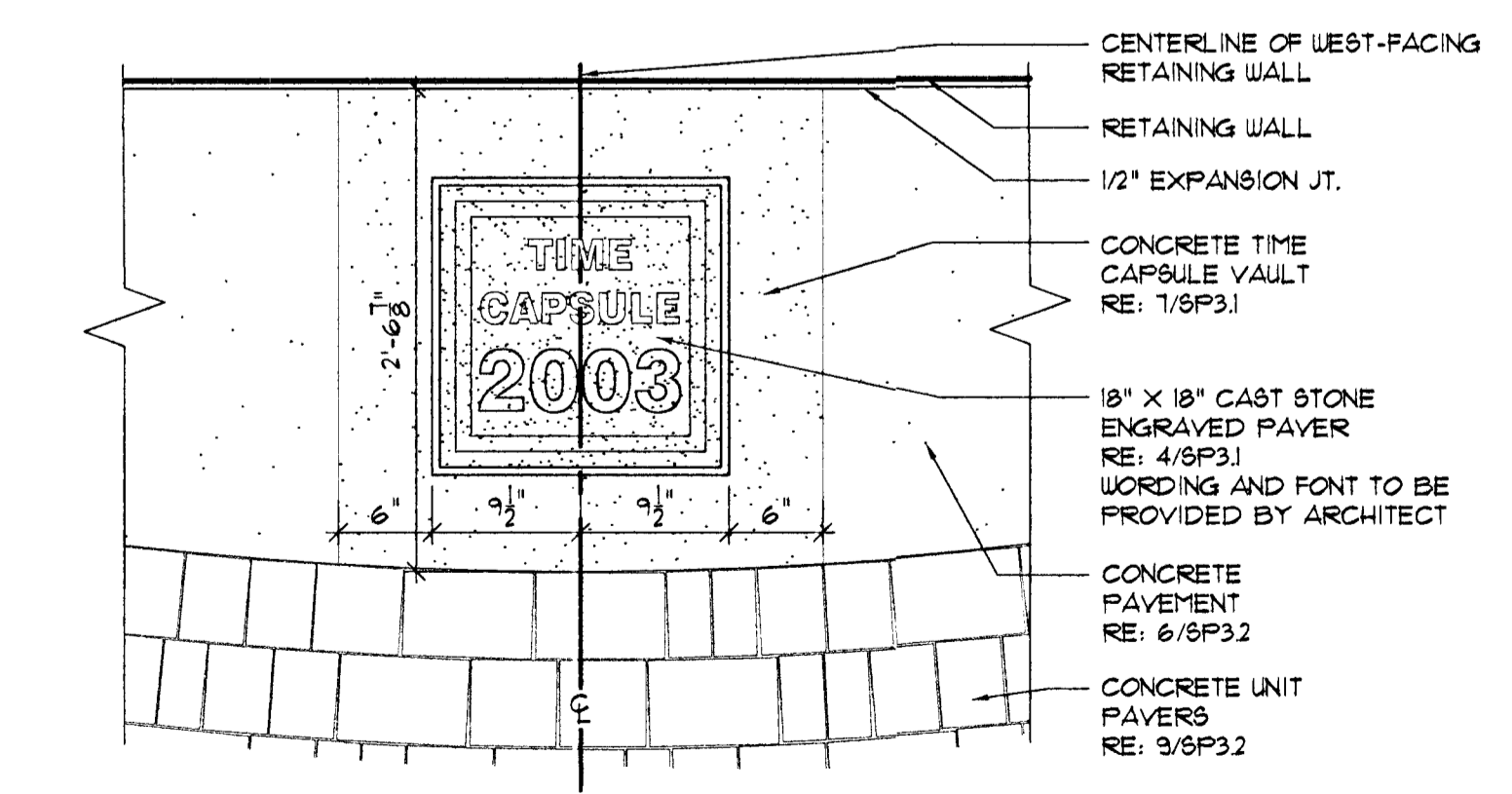
8 TYPICAL CROSSWALK PAVER DETAIL
SCALE: 1/4" = 1'-0"

PAVER NOTES:
CONCRETE PAVERS SHALL BE 'HOLLAND STONE' PAVERS AS MANUFACTURED BY PAVESTONE CO. THICKNESS = 3 1/8" LOCAL DISTRIBUTOR: KANSAS BUILDING PRODUCTS 1600 SOUTH HOOVER 316-943-3241 RE: CIV.1 FOR INSTALLATION DETAIL.



9 TYPICAL ROUND-ABOUT PAVER DETAIL
SCALE: 1/4" = 1'-0"

PAVER NOTES:
CONCRETE PAVERS SHALL BE 'HOLLAND STONE' AND 'PLAZA STONE' PAVERS AS MANUFACTURED BY PAVESTONE CO. THICKNESS = 3 1/8" LOCAL DISTRIBUTOR: KANSAS BUILDING PRODUCTS 1600 SOUTH HOOVER 316-943-3241 RE: CIV.1 (SIMILAR) FOR INSTALLATION DETAIL.



10 TIME CAPSULE PLAN
SCALE: 1" = 1'-0"



SITE DETAILS

SHEET
SP3.2

PROJECT NO. 472 83608
MVP PROJECT NO. 101008
DATE: AUGUST 1, 2002
REVISED: AUGUST 30, 2002
REVISED CONST. SET: FEBRUARY 1, 2003

WEST DOUGLAS STREETSCAPE
ARKANSAS RIVER TO SENECA
WICHITA, KANSAS

ARCHITECTS • PLANNERS • LANDSCAPE ARCHITECTS
125 S. WASHINGTON WICHITA, KANSAS 67202
P.O. BOX 388 WICHITA, KANSAS 67201
TEL: 360.0248 • FAX: 360.0246
MCCUIGGAGE VAN SICKLE & PERRY