

HARVEST & MAIZE SIGNALIZED CROSSWALK ON MAIZE 472-83367 (710215)

GENERAL NOTES

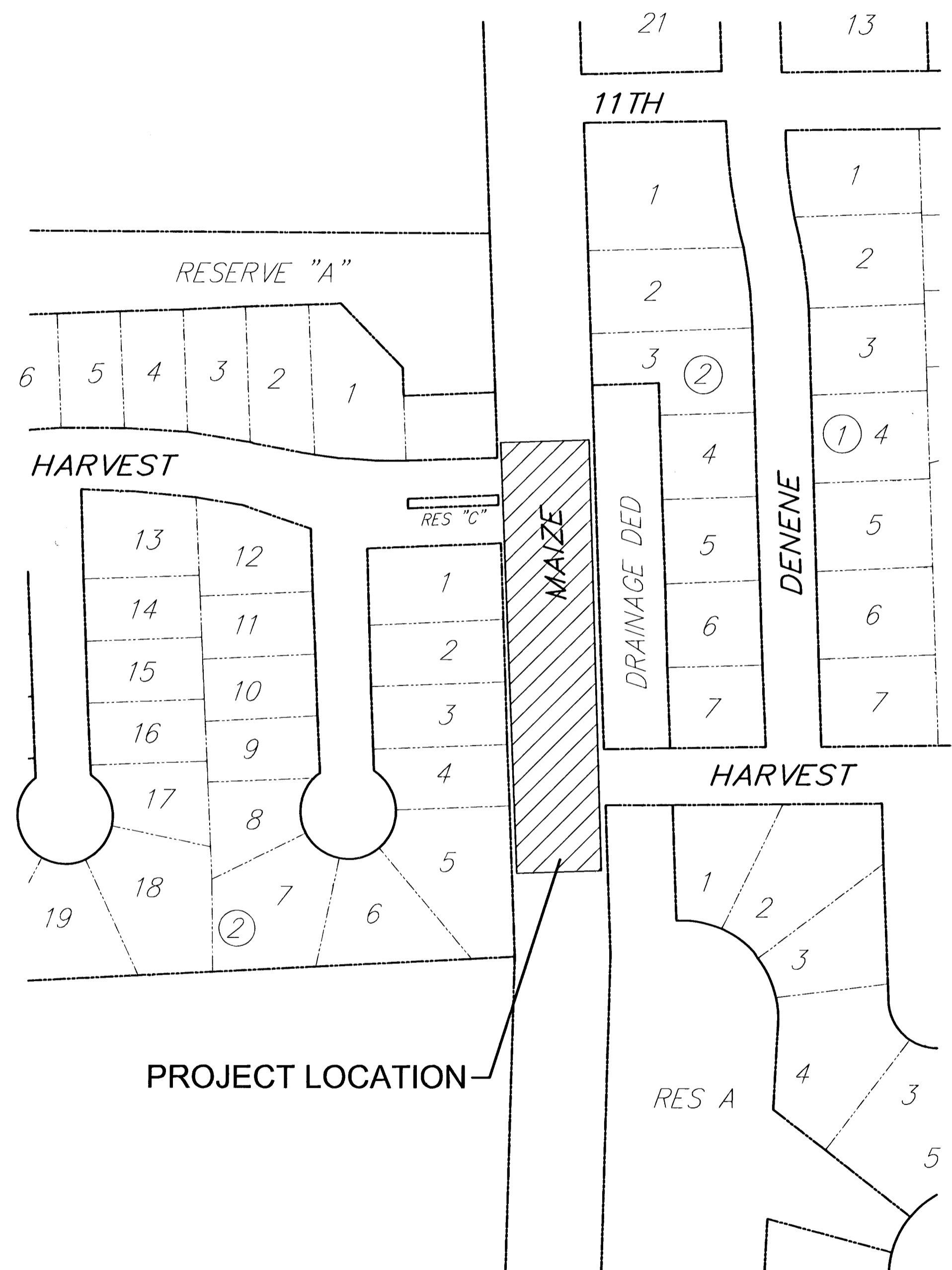
- Contractor will be required to provide a minimum advance notice of forty-eight (48) hours to utility companies prior to starting any excavation as follows:

Kansas One-Call 687-2470

The Contractor must notify the following in case of an emergency:

Multimedia	262-4270 or 263-2061
Kansas Gas Service	383-8650
Westar Energy	383-8600
Aquila Energy	942-8350 or 263-8161
Southwestern Bell Telephone Company	1-517-2611
City of Wichita Water Department	268-4908
City of Wichita Sewer Maintenance	268-4071

- Rubble from the removal of miscellaneous structures and excess excavation which is to be wasted shall be disposed of on sites to be provided by the Contractor.
- All disposal sites must be approved by the Kansas Department of Health and Environment. Material either stockpiled or disposed of in a flood plain would require a Kansas State Board of Agriculture permit. Any material dumped in waters of the United States or wetlands is subject to U.S. Corps permitting regulations. Any material buried or stockpiled beyond approved limits would require additional archeological investigations unless buried in a previously approved borrow location.
- All work, materials and testing on this project shall be done in conformance with City of Wichita standard specifications for the construction of city projects, dated March 1998.
- One lane of through traffic each way shall be maintained on Maize Road during construction of this project.
- Traffic control devices for work zones in compliance with the Manual on Uniform Traffic Control Devices shall be provided and maintained by the Contractor at all times during construction.
- The Contractor shall be responsible for preserving property irons. The Contractor will be required to re-establish any property irons which are damaged or destroyed by his construction operations. Such irons shall be re-established by a licensed land surveyor in accordance with state laws.
- The Contractor shall give all property owners and/or tenants of developed property directly abutting the construction of this project a minimum of ten (10) days advance notice prior to start of construction.
- Underground utility service lines and overhead utility pole lines are to be adjusted as necessary by others prior to construction unless the plans specifically call for their adjustment by the Contractor or unless the plans specifically identify a utility to be adjusted by its owner during construction. Existing utilities and their location, as shown on the plans, represent the best information obtainable for design. Location information has been obtained from the various utility companies and is either from company record drawings or company-provided field locations. The Contractor will be required to work around existing utilities within the right-of-way which do not conflict with proposed construction.
- Contractor shall contact Bryan Ring w/ Cox Communications at 262-4270, ext. 169 prior to construction to coordinate construction adjacent to overhead cable line.
- The Contractor shall notify pipeline companies at least 24 hours in advance of any work being performed across and/or adjacent to pipelines. The Contractor shall replace with sod any turf areas disturbed by construction.
- Contractor shall protect all trees during construction of this project. Any trees damaged by construction activities shall be replaced at the contractor's expense



INDEX OF SHEETS

- TITLE
- PAVEMENT MARKING & SIGNALIZATION PLAN
- WIRING DIAGRAM
- STEEL SIGNAL POLE ASSEMBLY DETAILS
- SERVICE/JUNCTION BOX DETAILS
- POWER POLE DETAILS
- PEDESTRIAN PEDESTAL AND CONTROLLER MOUNTING DETAIL

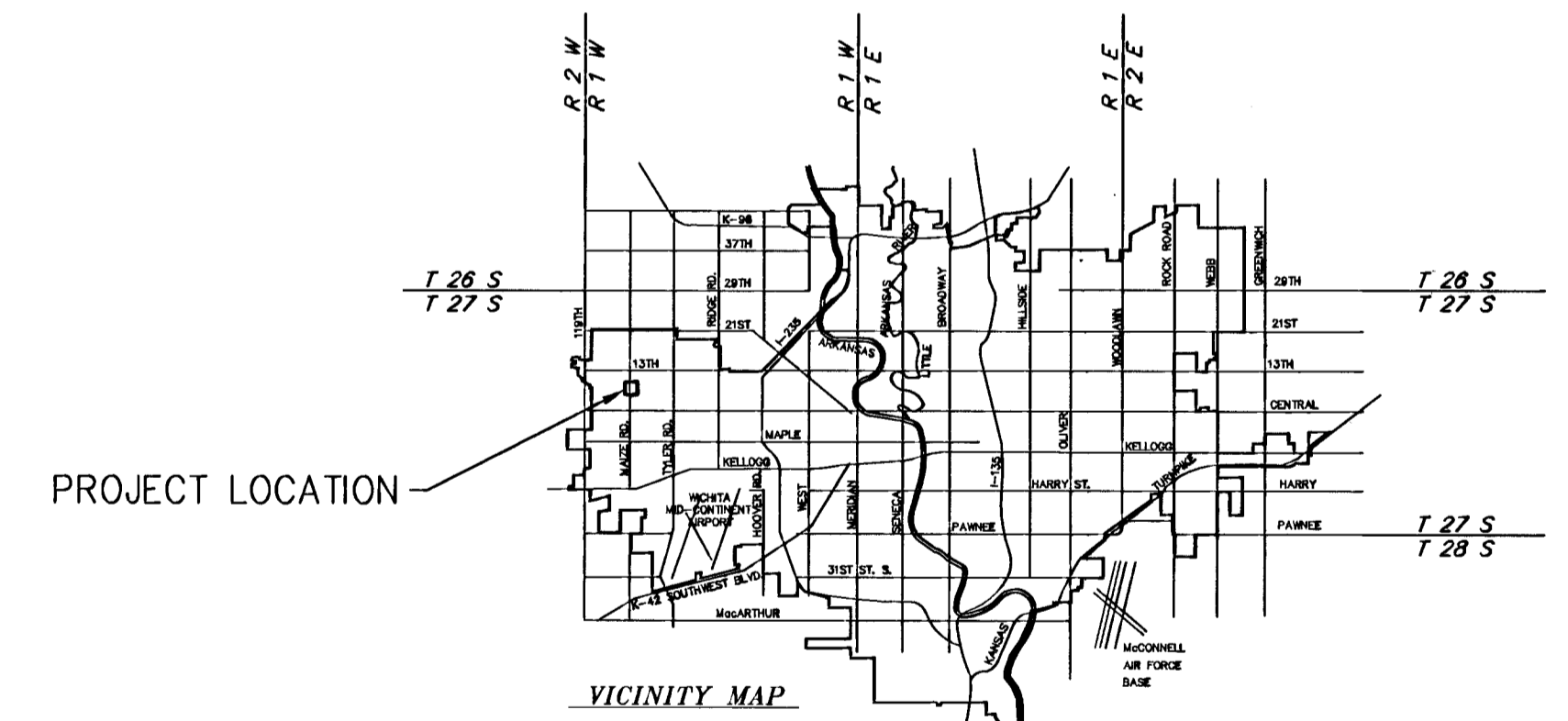


Scale 1" = 100'

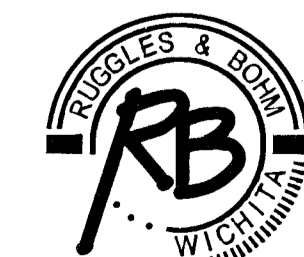
BENCHMARKS

BM #1 C.O.W. DISC AT S.E. CORNER OF MAIZE & HARVEST. TOP OF RC&G, MIDDLE OF SOUTH SIDE. ELEV. 1341.40

BM #2 "C" IN TOP OF CURB, 100± N. OF HARVEST ON EAST SIDE OF MAIZE ROAD. ELEV. 1339.76



CITY OF WICHITA, KANSAS
MICHAEL E. LINDEBAK - CITY ENGINEER



Ruggles & Bohm, P.A.

Engineering, Surveying, Land Planning

924 North Main
Wichita, Kansas 67203
www.rbkansas.com

(316) 264-8008
(316) 264-4621 fax
E-mail: info@rbkansas.com