

**BENCHMARKS:**  
 Brass benchmark disc in top of curb, east of wheelchair ramp NE cor. of Funston and Lynnrae Elev. = 1343.69 NAVD88

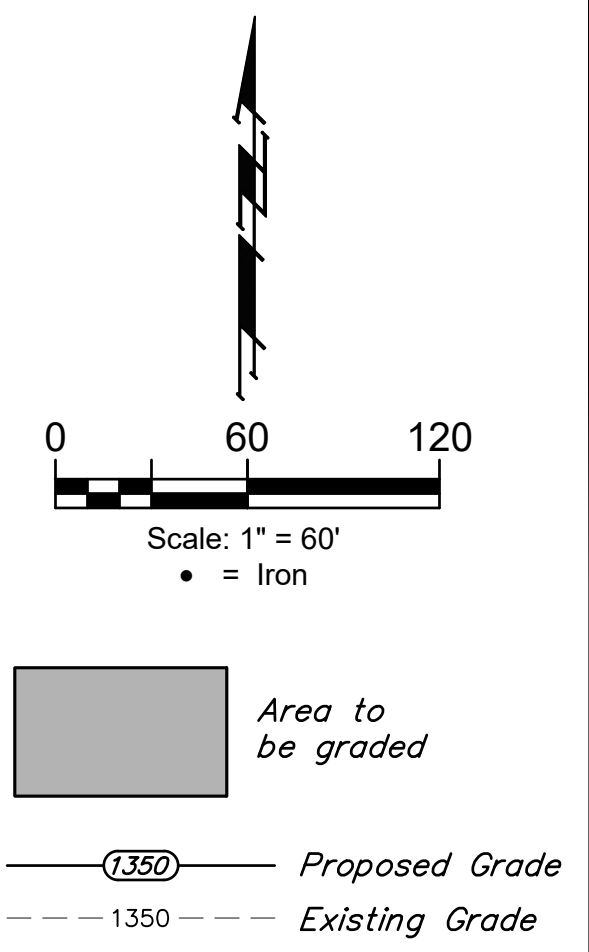
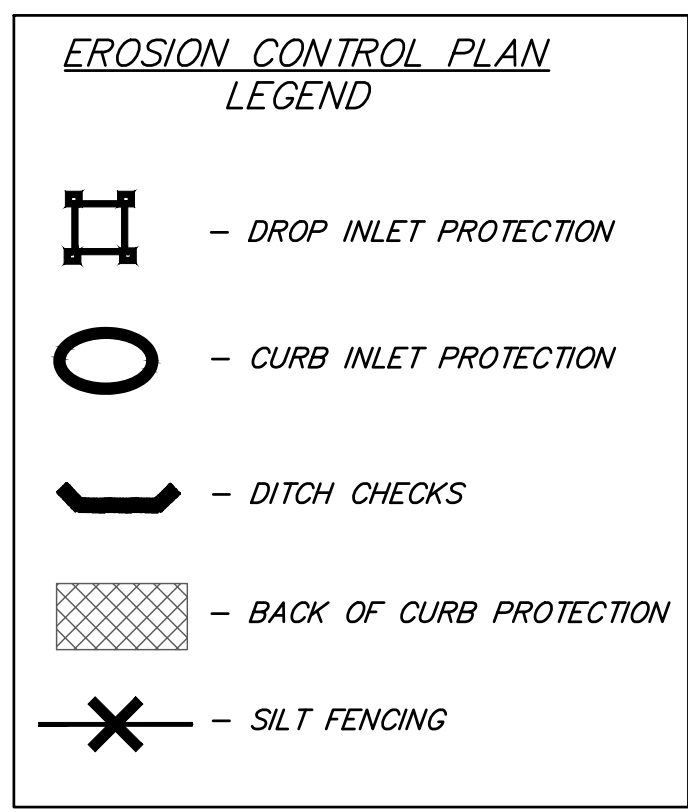
Brass benchmark disc in top of curb, north of wheelchair ramp NW cor. of Funston and Herrington Elev. = 1344.71 NAVD88

**NOTES:**  
 1. Contractor shall make sure all erosion control is in place before project is accepted. This plan represents the minimum standard. Any additional erosion control measures shall be installed by the Contractor as needed.  
 2. Removal of Gravel Construction Entrance for pavement construction shall be included in bid item "Site Clearing"  
 3. All areas disturbed during construction shall be seeded, mulched, and fertilized as per Cover Sheet General Notes.

**EARTH WORK TOTALS (Unadjusted for Shrink & Swell)**  
 (for information only)

	Excavation	Fill
Reserve "B" Pond	5,673	-
Mass Grading	26,867	33,537
<b>Total Earthwork</b>	<b>32,540</b>	<b>33,537</b>

Earthwork quantities are for reference only. All cost associated with earthwork shall be included in C.Y. "Excavation" & L.S. "Grading, Mass".



- Mass Grading General Notes:**
- Earthwork quantities are unadjusted and are for reference only. All cost associated with mass grading shall be included in C.Y. "Excavation" and lump sum bid item "Mass Grading".
  - Contractor to strip top 4-6" of soil within street right-of-way and Reserve "A", Willow Creek 3rd Addition before mass grading and stockpile. Topsoil is to be spread over Reserve "A" prior to seeding.
  - Compaction of 95% Std. Proctor Density shall be obtained in all areas, moisture content of optimum to 4%.
  - It shall be the Contractor's responsibility to protect existing utilities during mass grading. Any damage done to these systems by Contractor or subcontractor shall be repaired at no additional cost to the project.
  - All areas disturbed during construction shall be seeded, mulched, and fertilized as per Cover Sheet General Notes.
  - Street elevations are top of dirt at centerline.
  - Grade points around cul-de-sacs are located at 1' behind back of proposed curb.

EROSION CONTROL MEASURE	INSTALL	MAINTAIN
CONSTRUCTION ENTRANCE (EA)	0	1
CUT OFF TRENCH & BERM (LF)	550	0
CURB INLET BARRIER (EA)	7	0
EROSION CONTROL MAT (SY)	2,710	0
DROP INLET PROTECTION (EA)	9	0

\* ALL EXISTING BMPs INCLUDING CONSTRUCTION ENTRANCE, SEDIMENT BARRIERS, SILT FENCE, CUT-OFF TRENCH, AND EROSION CONTROL MAT SHALL BE MAINTAINED AND REPAIRED IF NECESSARY.

**NOTE:**  
 Existing trees shall be trimmed/removed ONLY with approval of Developer. Prior to construction, an on-site meeting will occur with Contractor, Developer, and Engineer to determine limits of tree clearing. Trimming will only be permitted with chainsaws. Trees not in direct conflict with proposed new construction shall remain and be protected from damage. All removal/trimming shall be included in "Site Clearing"



**BAUGHMAN COMPANY**

315 Ellis St.  
 Wichita, KS 67211  
 316-262-7271  
 BaughmanCo.com

---

WILLOW CREEK EAST 3RD ADDITION - PHASE II

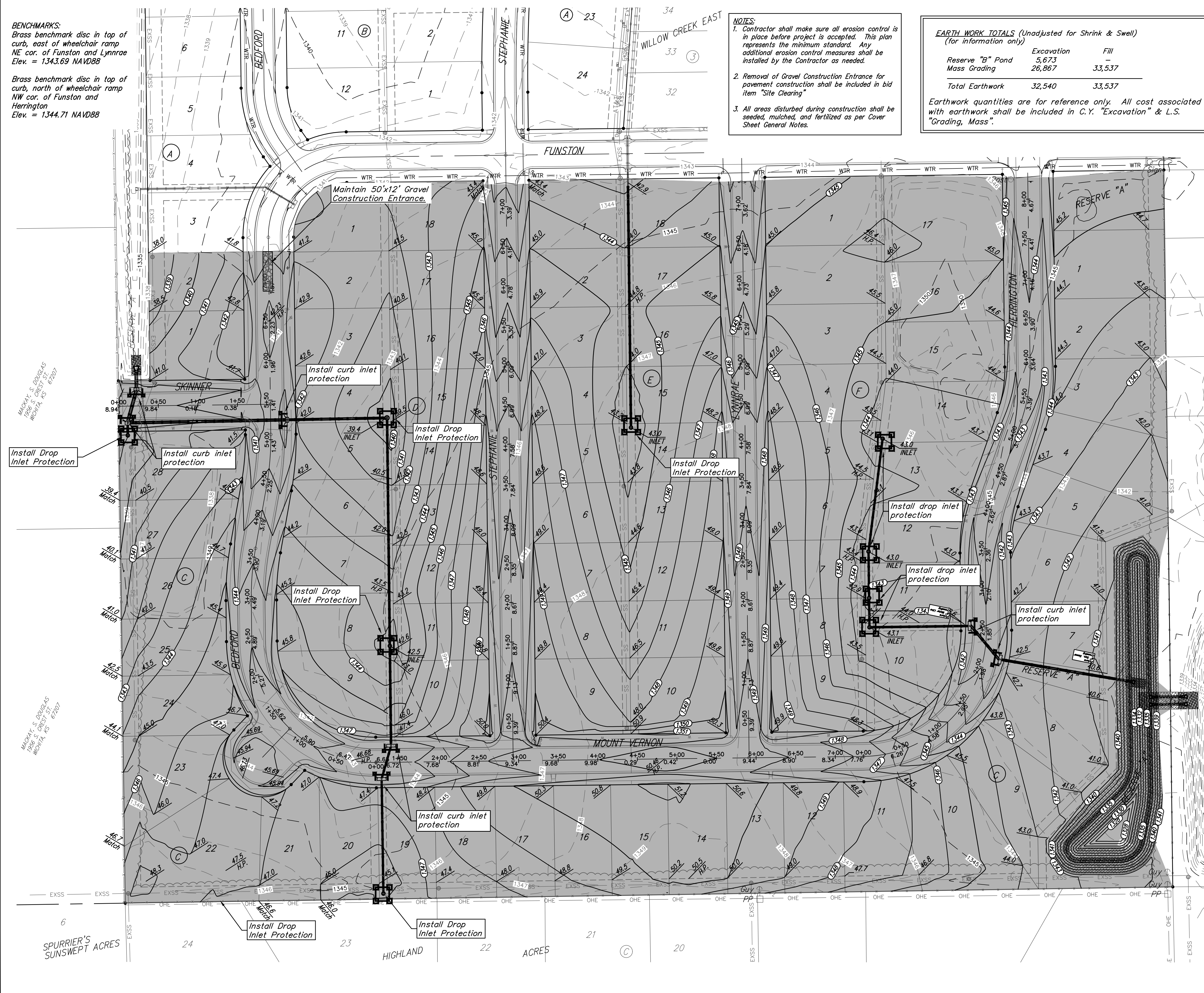
**MASS GRADING/ EROSION CONTROL**

STORM WATER DRAIN IMPROVEMENTS

PROJECT NUMBER:

---

DESIGN: DMV DRAWN: JAK  
 DATE: April 14, 2021  
 SHEET OF  
**10 23**



MACKAY, S. DOUGLAS  
 1400 S. CREST ST.  
 WICHITA, KS 67207

MACKAY, S. DOUGLAS  
 1400 S. CREST ST.  
 WICHITA, KS 67207

SPURRIER'S SUNSWEEP ACRES

File: E:\Projects\Willow Creek East 3rd Addition\_17-04-P283\Engineering\Phase 3\SWD\_dwg