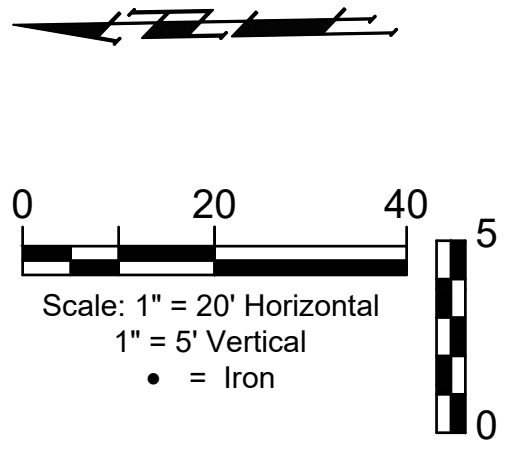
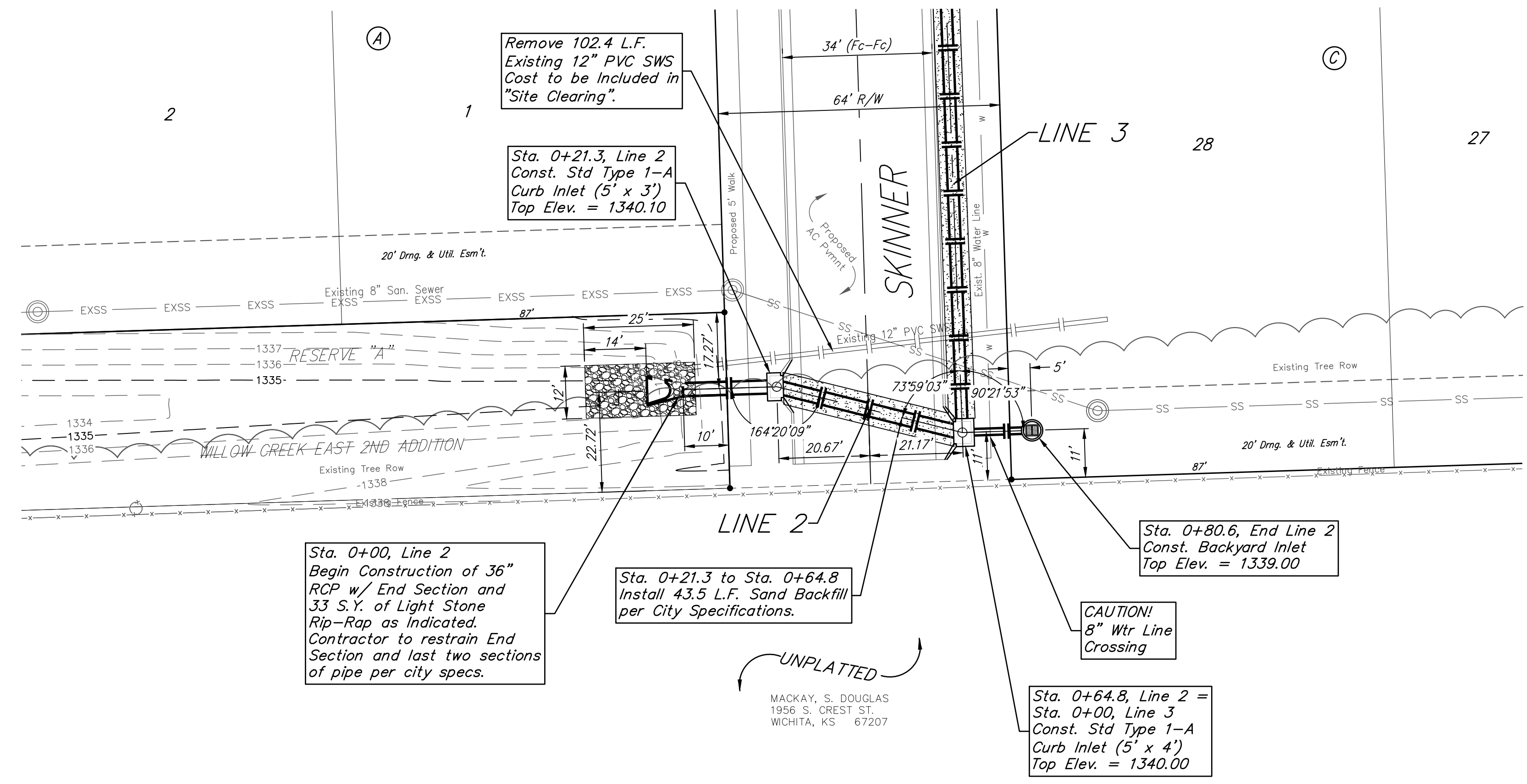
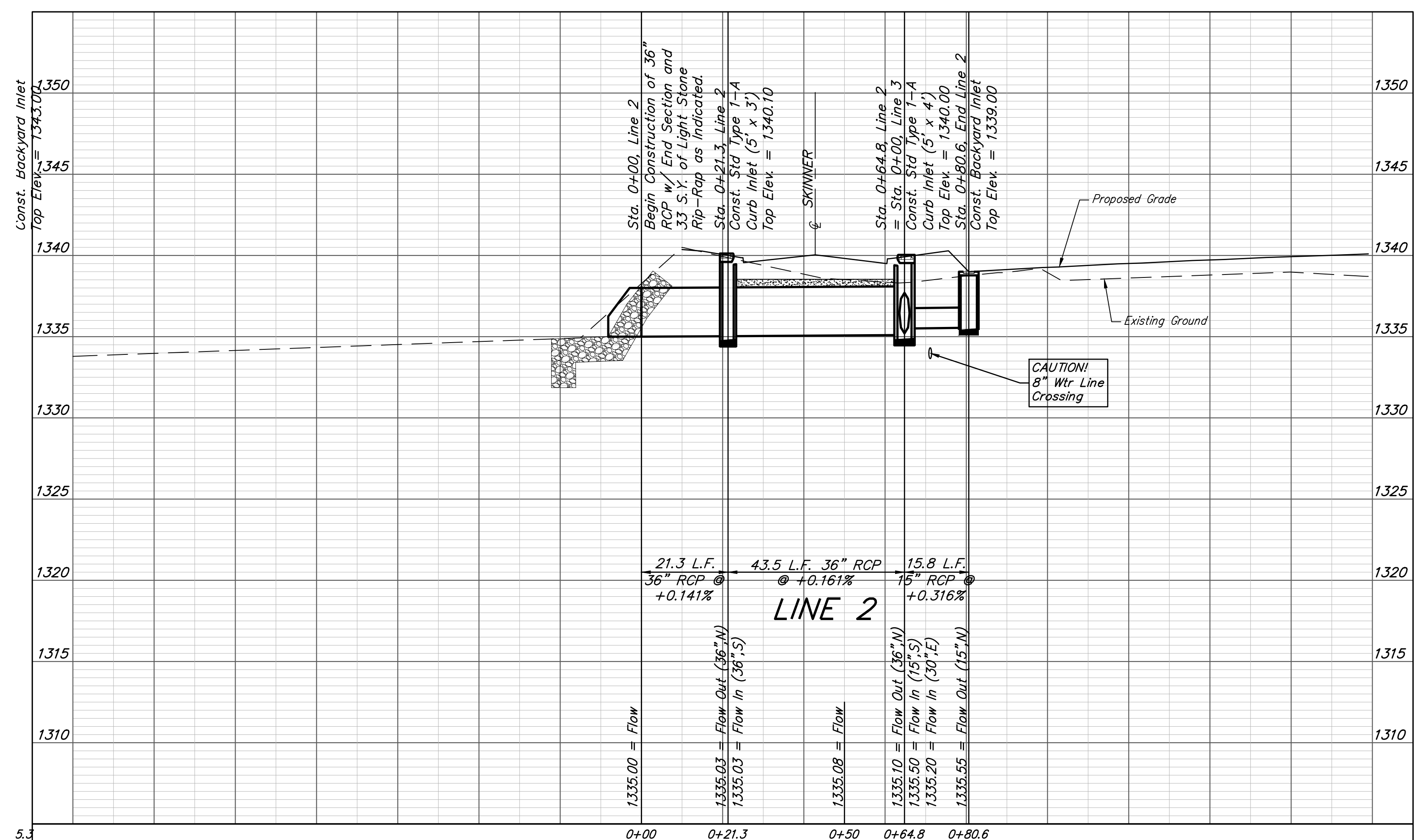


BENCHMARKS:
 Brass benchmark disc in top of
 CURB INLET, wheelchair ramp
 Brass benchmark disc in top of
 curb, north of wheelchair ramp
 Brass benchmark disc in top of
 curb, north of wheelchair ramp
 Brass benchmark disc in top of
 curb, north of wheelchair ramp
 Brass benchmark disc in top of
 curb, north of wheelchair ramp
 Herrington
 Elev. = 1344.71 NAVD88

WILLOW CREEK EAST 3RD ADDITION



Existing trees shall be trimmed/
 removed ONLY with approval of the
 Developer. Trimming of overhanging
 limbs will be permitted only with
 chainsaws. Trees not in direct conflict
 with proposed new construction shall
 remain and be protected from damage.
 All trimming or removal shall be
 included in bid item "Site Clearing"





**BAUGHMAN
 COMPANY**

315 Ellis St.
 Wichita, KS 67211
 316-262-7271
 BaughmanCo.com

WILLOW CREEK EAST 3RD
 ADDITION - PHASE II

LINE 2

STORM WATER DRAIN
 IMPROVEMENTS

PROJECT NUMBER:

DESIGN: DMV DRAWN: JAK
 DATE: April 14, 2021

SHEET **3** OF **23**

File: E:\Projects\Willow Creek East 3rd Addition_17-04-P283\Engineering\Phase 3\SWD.dwg