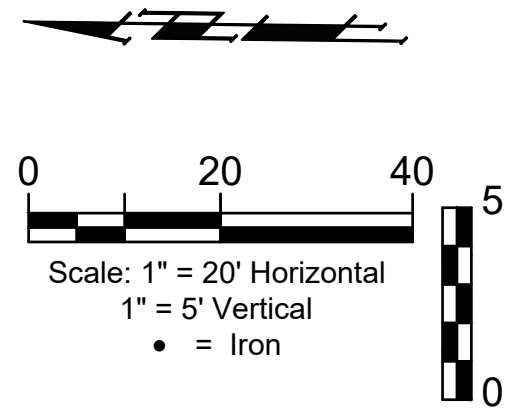
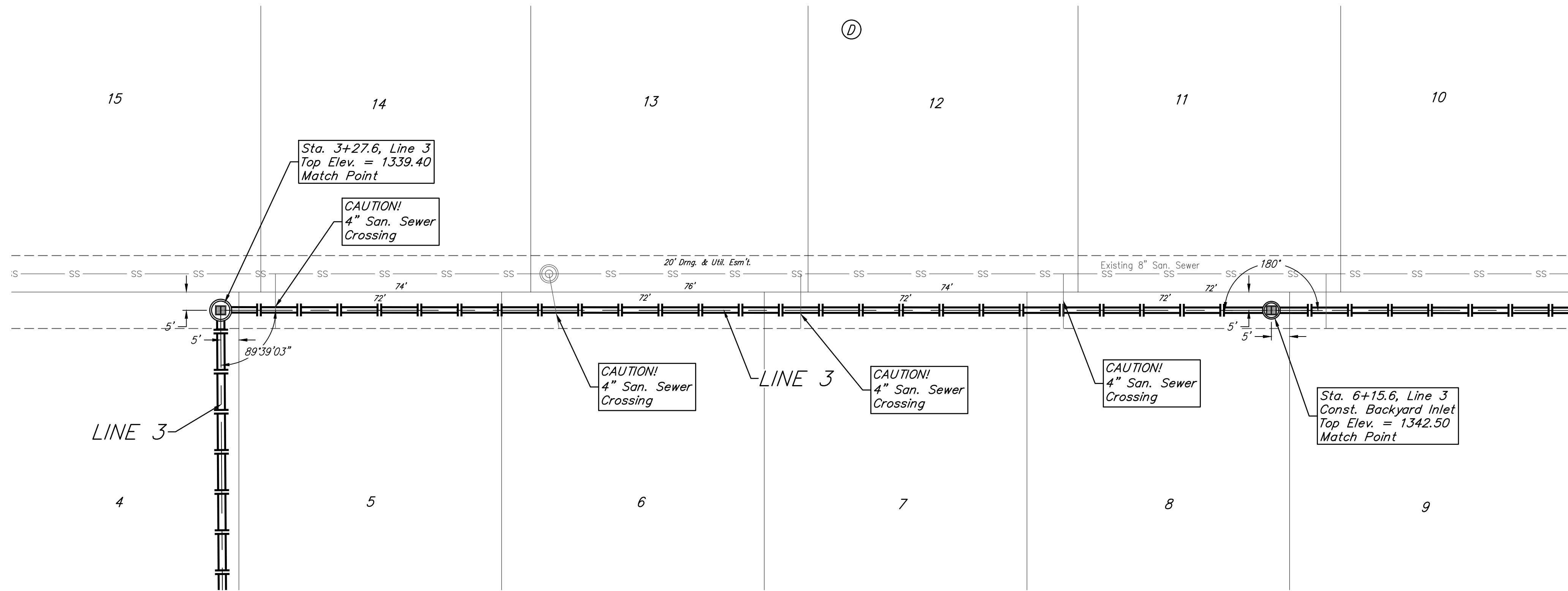


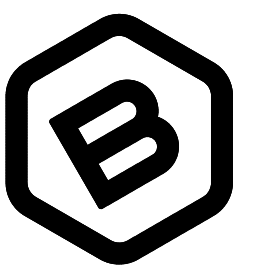
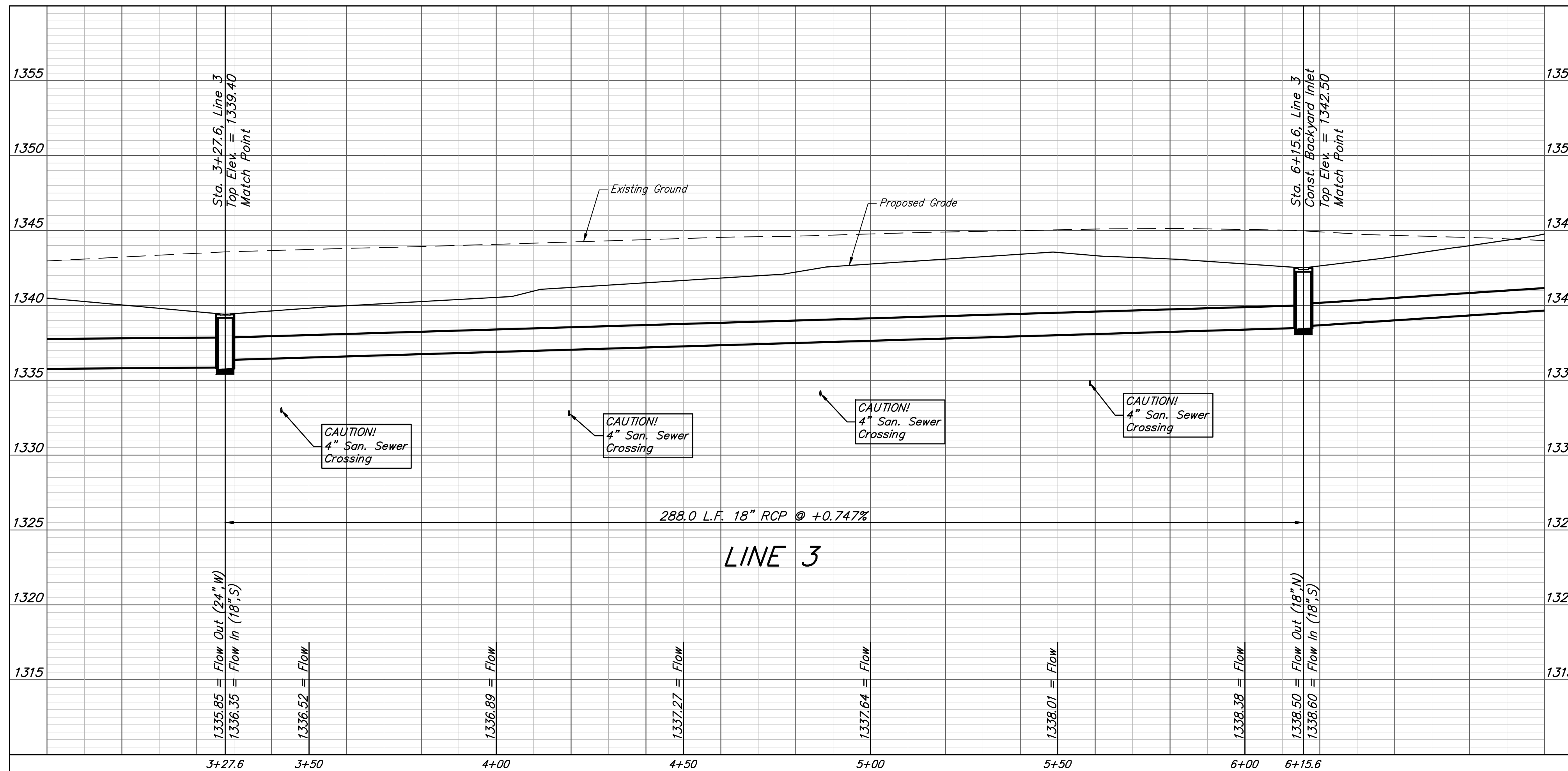
BENCHMARKS:
 Brass benchmark disc in top of curb, east of wheelchair ramp
 NE cor. of Funston and Lynnrae
 Elev. = 1343.69 NAVD88

Brass benchmark disc in top of curb, north of wheelchair ramp
 NW cor. of Funston and Herrington
 Elev. = 1344.71 NAVD88

WILLOW CREEK EAST 3RD ADDITION



WILLOW CREEK EAST 3RD ADDITION



BAUGHMAN COMPANY

315 Ellis St.
 Wichita, KS 67211
 316-262-7271
 BaughmanCo.com

WILLOW CREEK EAST 3RD ADDITION - PHASE II

LINE 3

STORM WATER DRAIN IMPROVEMENTS

PROJECT NUMBER:

DESIGN: DMV DRAWN: JAK

DATE: April 14, 2021

SHEET **5** OF **23**

File: E:\Projects\Willow Creek East 3rd Addition_17-04-P283\Engineering\Phase 3\SWD.dwg