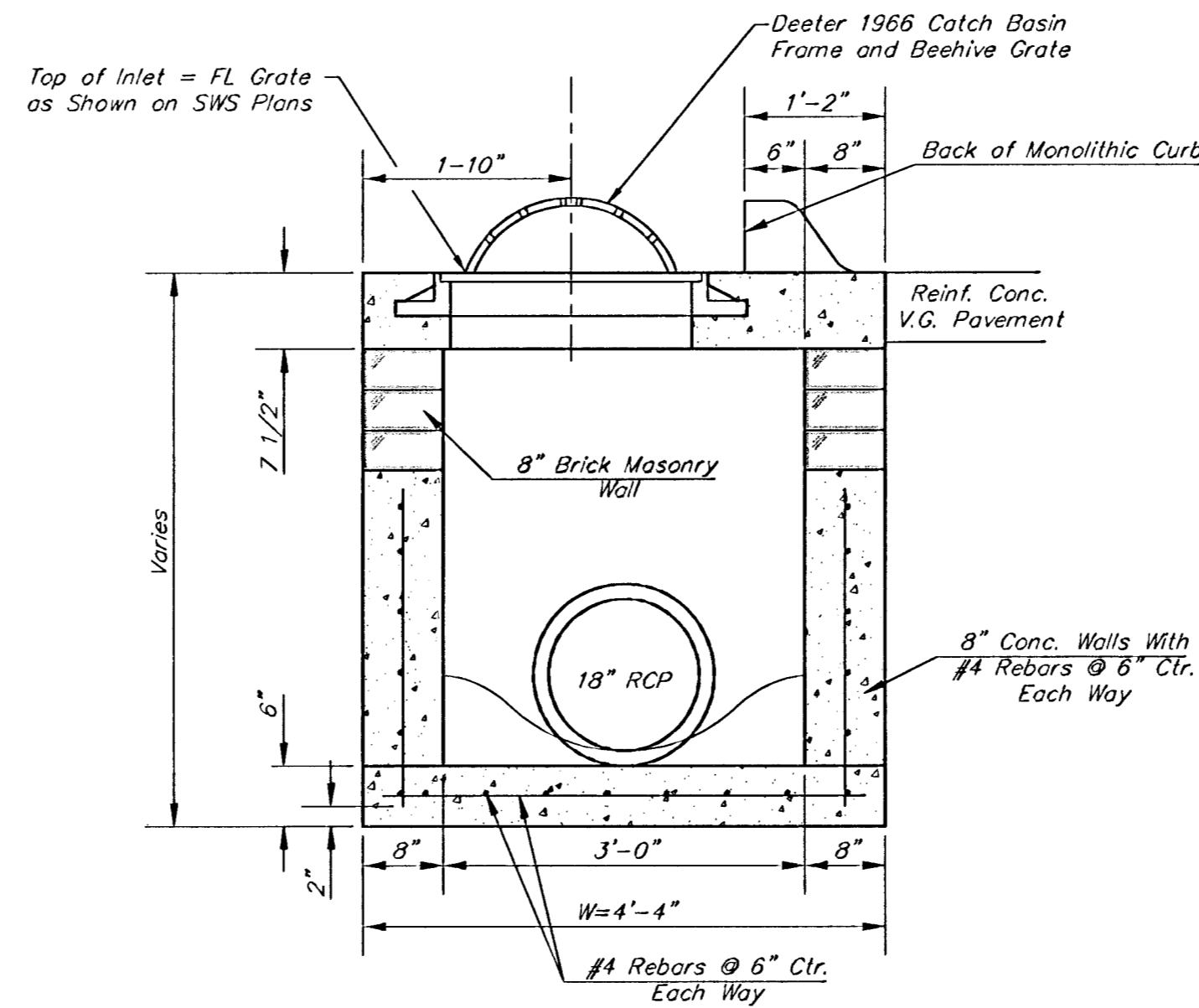


- Notes:**
- Inlet Top Reinforcing shall be Spaced on 6" Max. Centers. Inlet Lids shall be Notched out as Indicated to Facilitate Construction of Curb.
 - b₃ Bar to be Field Bent to Clear Inlet Frame.



SECTION A-A

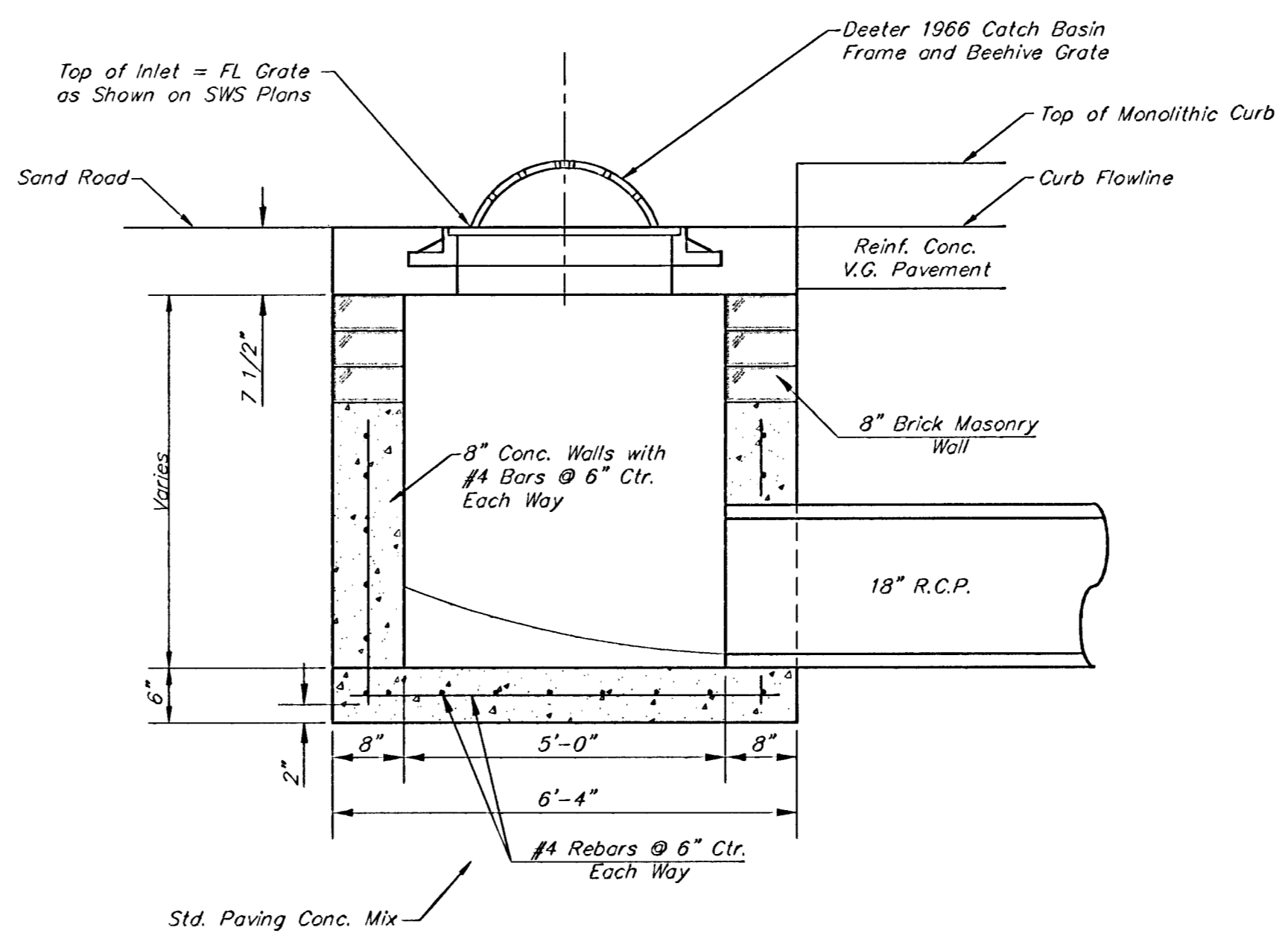
GENERAL NOTES

- Concrete tops to be installed on thin mortar cushion to insure full support along brick walls. Concrete tops may be cast in place or precast. Concrete used for inlet construction shall be concrete pavement mix.
- Contractor shall have the option of constructing 8" brick masonry walls between the concrete inlet base and top on this inlet when W=6'-4" and H=7'-0" or less.
- Inlet invert shall be shaped with 8 sack sand mix concrete to create flow channels and to increase hydraulic efficiency such that the inlet will be self cleaning between all inlet and/or outlet pipes.
- The ends of all pipes installed in inlets shall be cut off flush with the inside face of the inlet wall.
- Inlet top reinforcing shall be spaced on 6" max. centers. Bars in inlet top to be field bent or cut to clear beehive manhole inlet ring.
- Deeter 1966 Catch Basin Frame shall be inset in inlet top. Flowline of Beehive Grate shall be the same elevation as the inlet top.

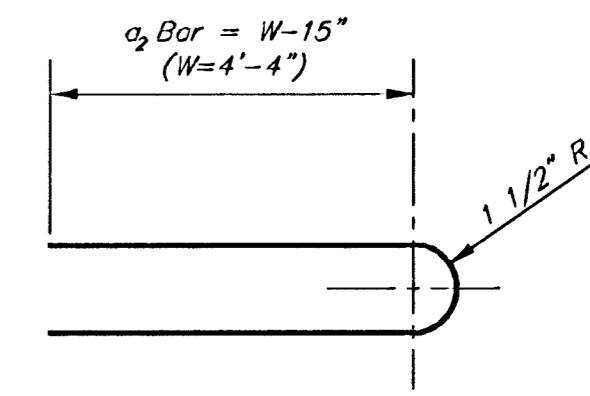
STEEL SCHEDULE

BAR	a ₂	a ₃	b ₁	b ₂	b ₃	b ₄
NUMBER	8	2	1	8	1	3
SIZE	#4	#4	#4	#4	#4	#6
W=4'-4"	6'-7"	4'-0"	6'-1"	1'-9"	6'-2"	6'-1"

Note: a₂ Bars to be Placed Approx. 2" Below Top of Inlet Cover.



SECTION B-B



BENDING DIAGRAM

PROJECT NUMBER 472-76-245-82026		SHEET NAME BEEHIVE		ENGINEERING DIRECTORY FAMURDOCK/DETAIL	
DESIGN JFB/JMN	DRAWN KWR/JMN	APPROVED	DATE SEPT 99	SCALE NONE	BAUGHMAN NO 98-06-E100

BEEHIVE INLET DETAIL
MURDOCK & WICHITA INTERSECTION IMPROVEMENTS

BAUGHMAN COMPANY, P.A.
ENGINEERING, SURVEYING, & PLANNING
318-282-7271 • 315 ELLIS • WICHITA, KANSAS 67211