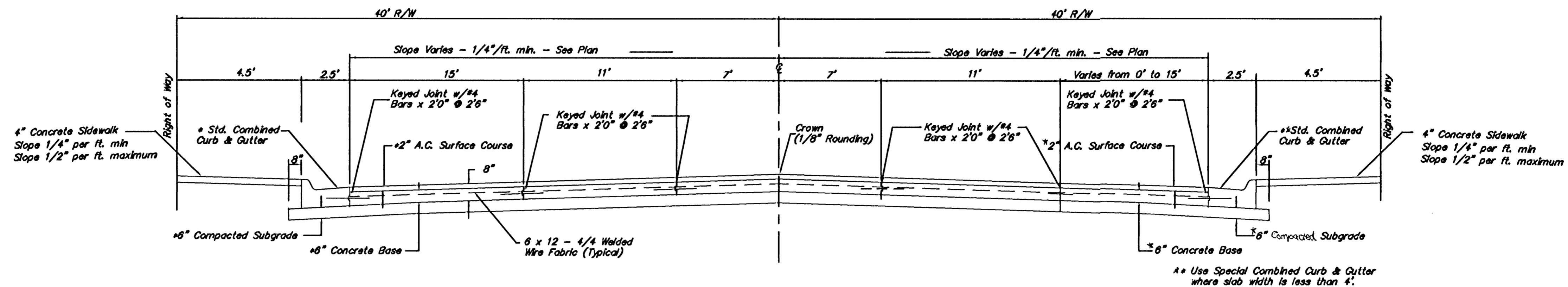
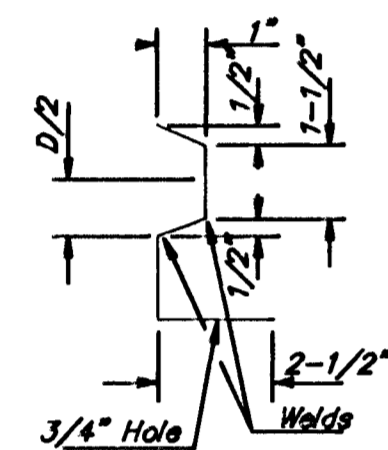


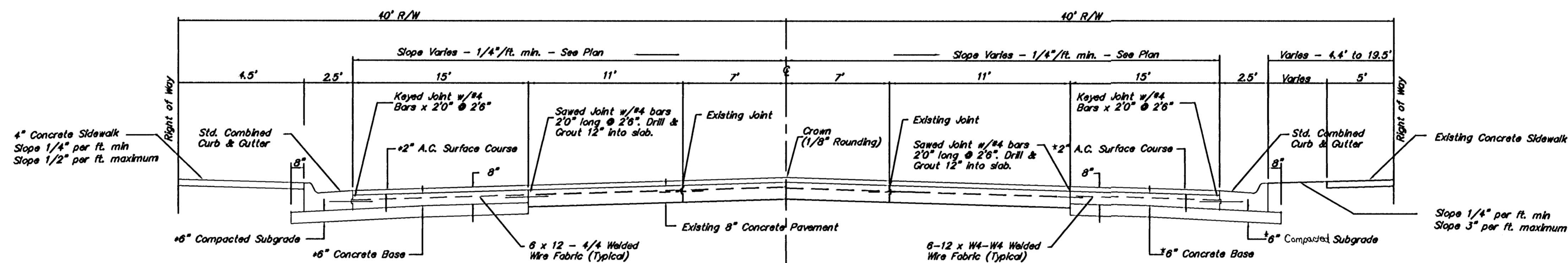
CUT AND SEAL SAW JOINT DETAIL



TYPICAL SECTION 6" REINFORCED CONCRETE W/2" A.C. SURFACE
EDGEMOOR STA. 3+50 TO STA. 4+00

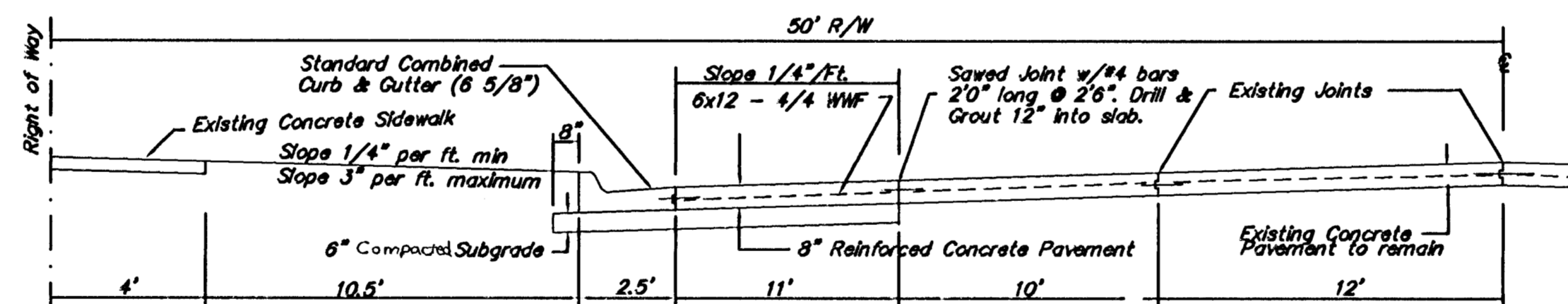


METAL KEYWAY DETAIL

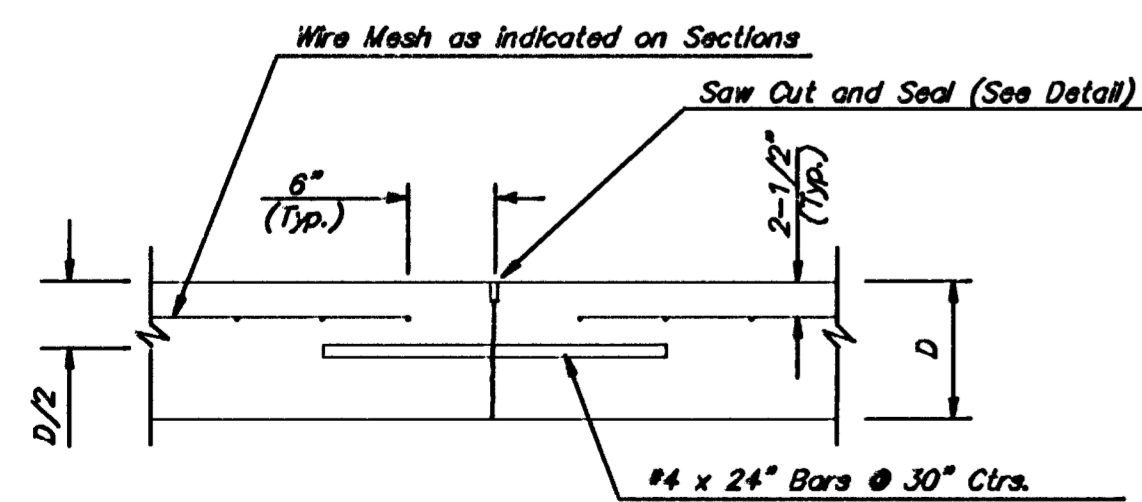


*Alternate Construction: 5" A.C. (3" Bituminous Base)
With 7" Reinforced Crushed Rock Base

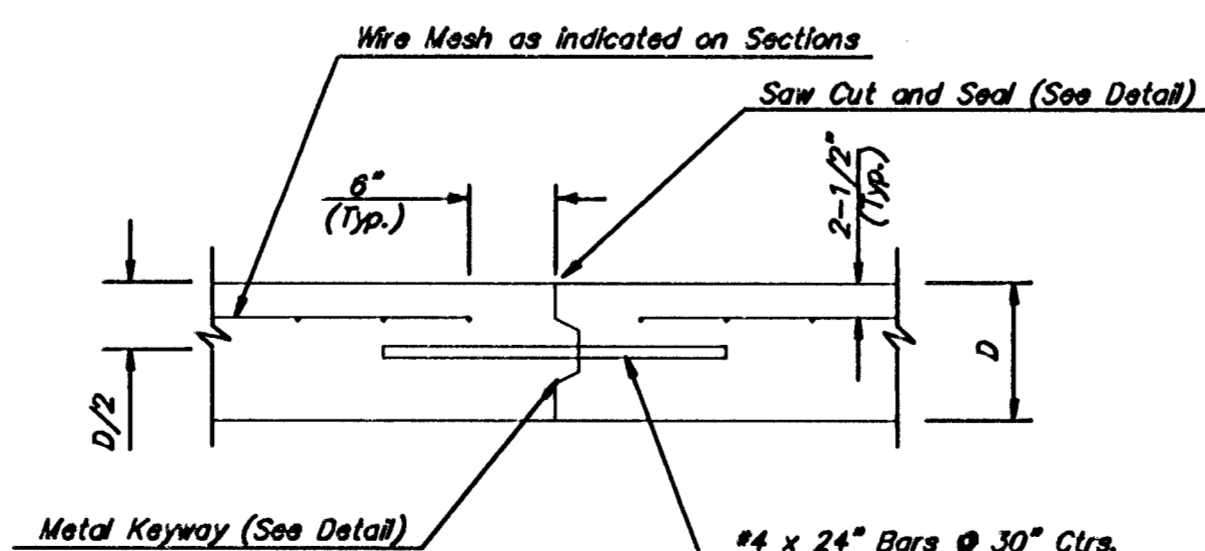
TYPICAL SECTION 6" REINFORCED CONCRETE W/2" A.C. SURFACE
EDGEMOOR STA. 4+00 TO STA. 6+60



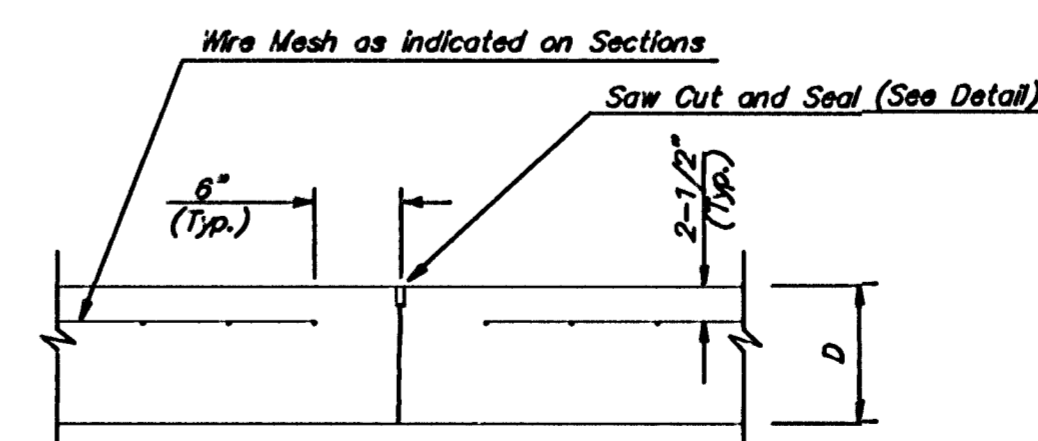
TYPICAL SECTION 8" REINFORCED CONCRETE PAVEMENT
HARRY STA. 6+80 TO STA. 8+90




LONGITUDINAL JOINT DETAIL (OPTIONAL CONSTRUCTION)



LONGITUDINAL CONSTRUCTION JOINT DETAIL



TRANSVERSE CONTRACTION JOINT DETAIL

REVISED 8-23-95 JKB				
HARRY AND EDGEMOOR INTERSECTION TYPICAL SECTIONS & DETAILS				
 BAUGHMAN COMPANY P. A. ENGINEERING & SURVEYING 316/262-7271 • 315 ELLIS • WICHITA, KANSAS 67211				
PROJECT NUMBER 468-82138 & 472-82668				SHEET 3
DESIGN TCR	DRAWN TCR	UTIL. CHECK'D DATE 7-13-92	SCALE NONE	OF 38