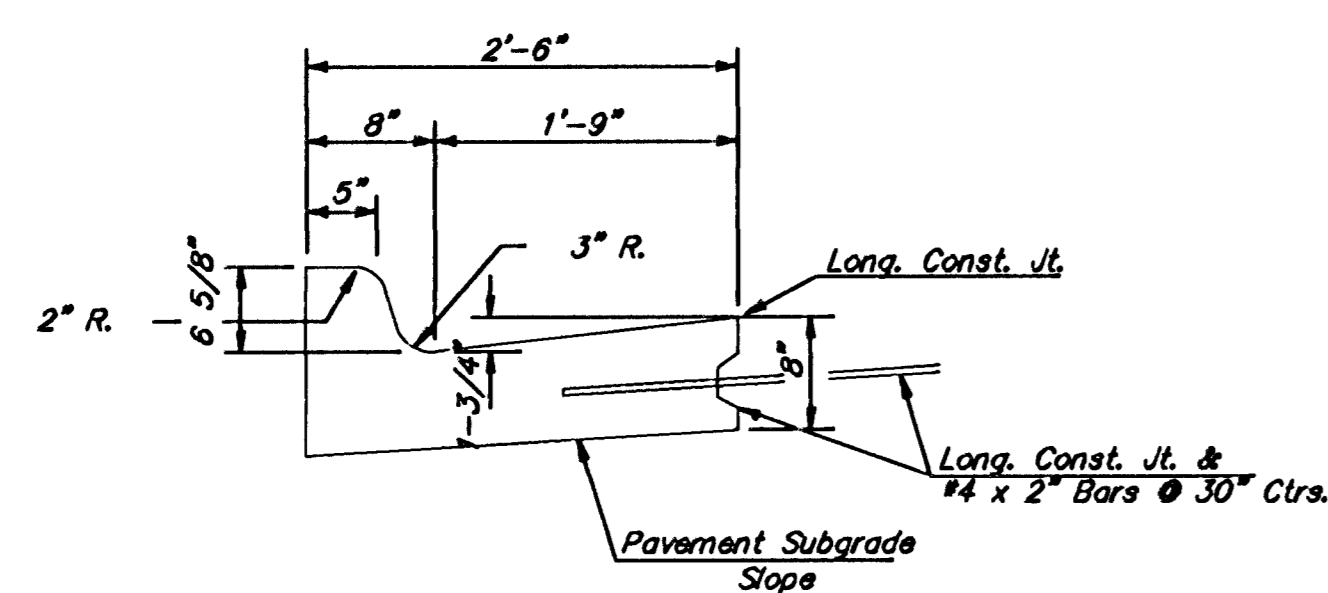
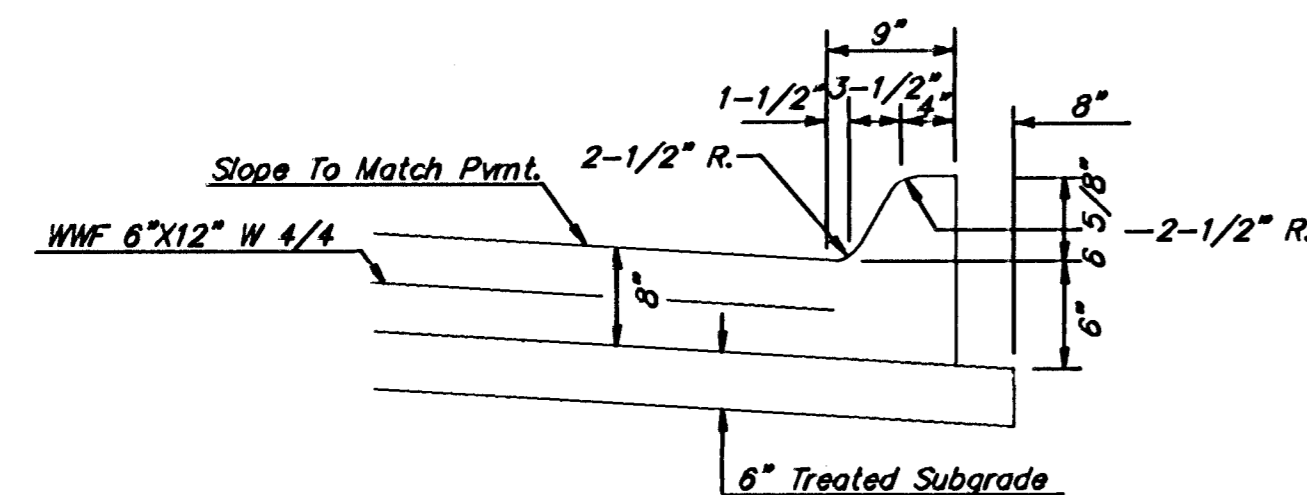


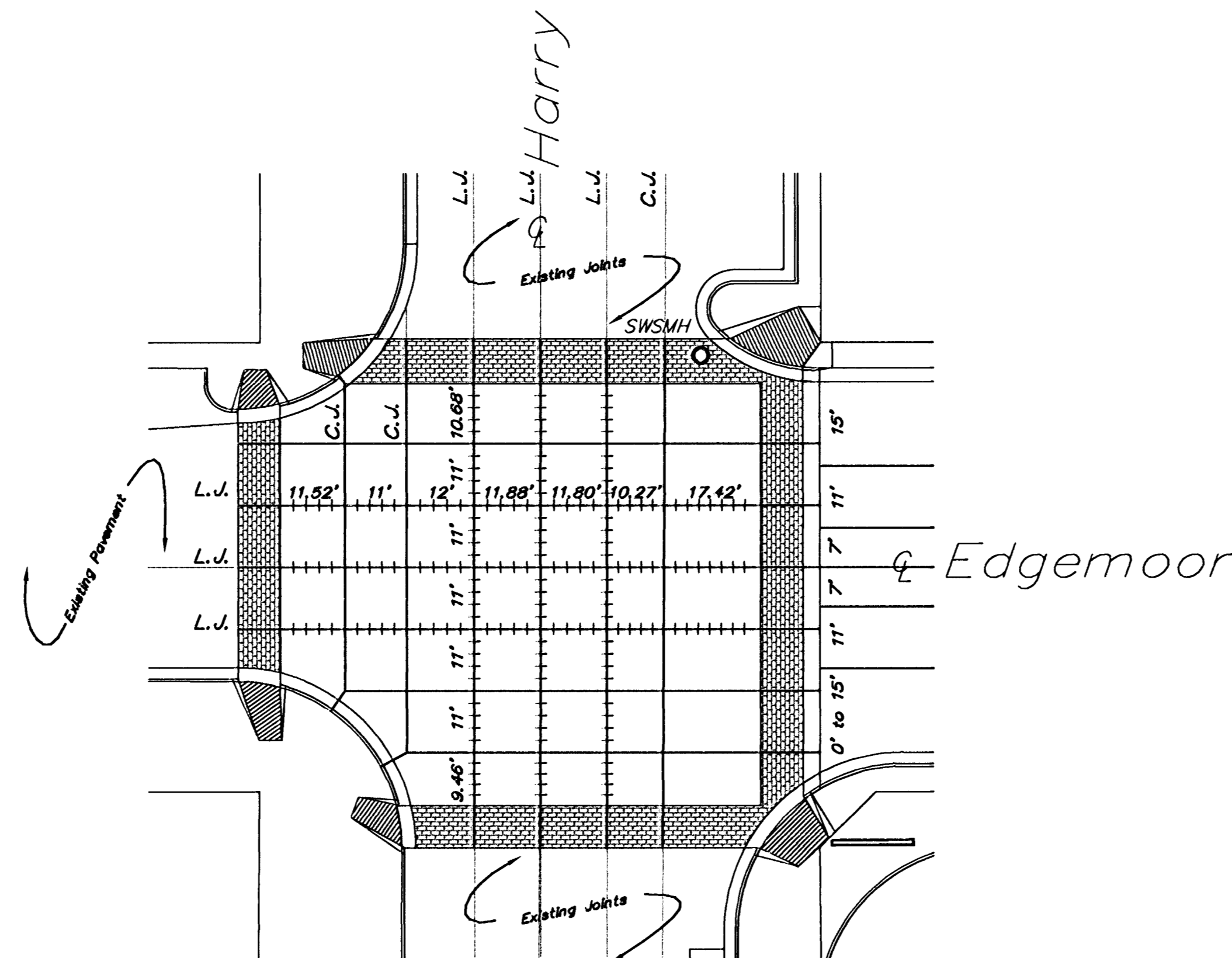
STANDARD  
COMBINED CURB & GUTTER (6-5/8")  
@ 6" CONC. BASE W/2" A.C. SURFACE



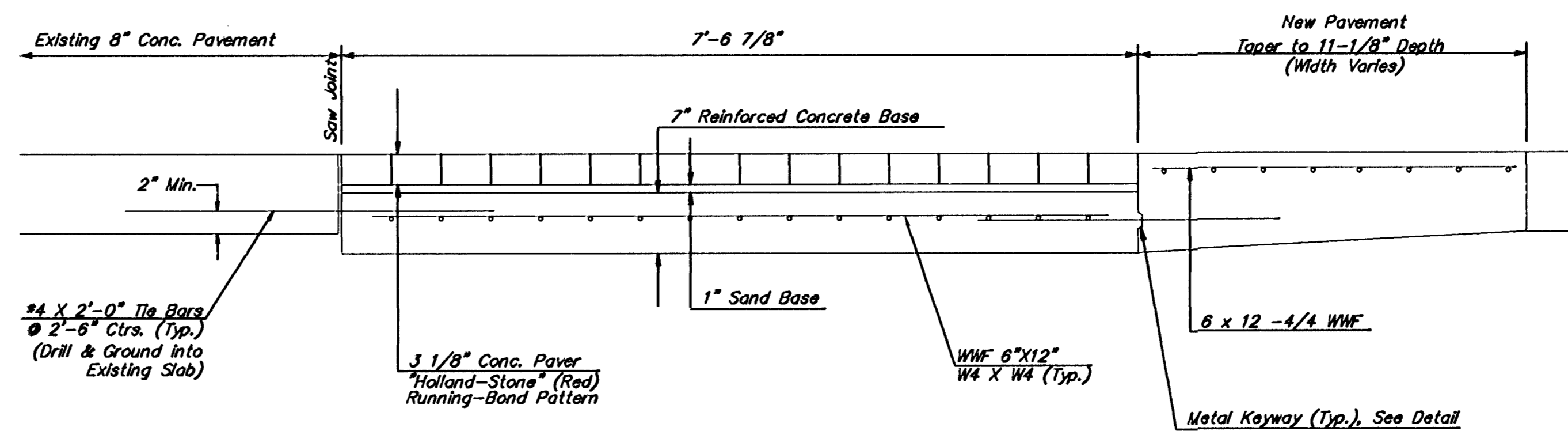
STANDARD COMBINED CURB & GUTTER  
ADJACENT TO CONCRETE PAVEMENT



MONOLITHIC EDGE CURB - (6")



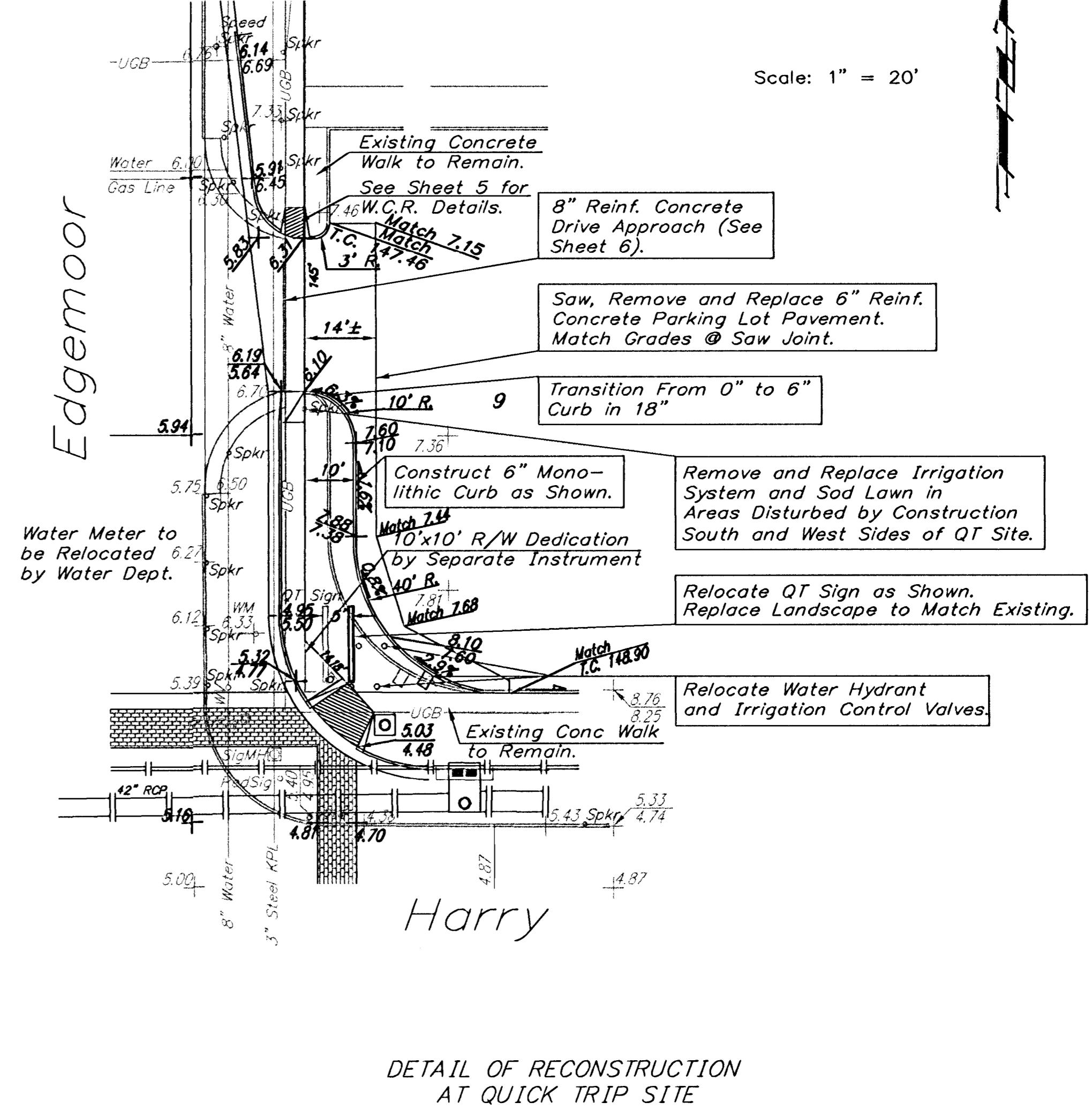
HARRY and EDGEMOOR  
INTERSECTION JOINT DETAIL



CROSSWALK CONCRETE PAVER SURFACE DETAIL

NOTE: Pavement transition from 8" to 11-1/8" Depth and Concrete Pavement under crosswalk To Be Bld as S.Y. 9" Reinforced Concrete Pavement

NOTE: 1" Sand Base under Concrete Paver Surface to be subsidiary to bid item for "Concrete Paver Crosswalk Surface (3 1/8")



DETAIL OF RECONSTRUCTION  
AT QUICK TRIP SITE

Scale: 1" = 20'

REVISED 8-23-95 JKB

HARRY AND EDGEMOOR INTERSECTION  
PAVEMENT DETAILS

BAUGHMAN COMPANY P. A.  
ENGINEERING & SURVEYING  
316/282-7271 • 315 ELLIS • WICHITA, KANSAS 67211

PROJECT NUMBER		468-82138 & 472-82668		SHEET OF 38
DESIGN	DRAWN	UTIL. CHECK'D DATE	SCALE	
TCR	EML/SONNY	10-22-92	NONE	