

FHWA REGION NO.	STATE	PROJECT NUMBER	FISCAL YEAR	SHEET NUMBER	TOTAL SHEETS
7	KANSAS	87N-0127-01	1999	41	90

DATE	
BY	
REFERENCES NOTED	
REFERENCES CHECKED	

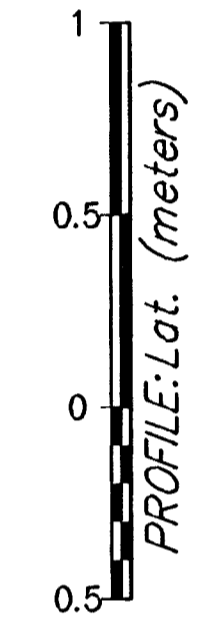
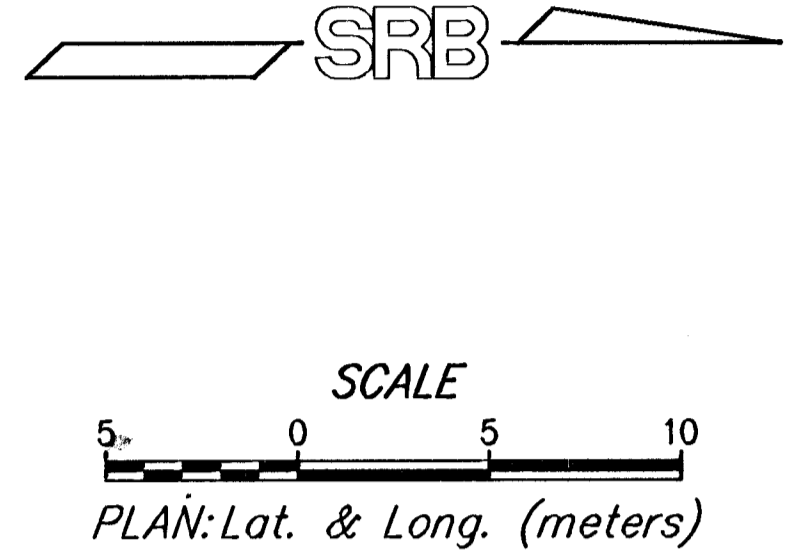
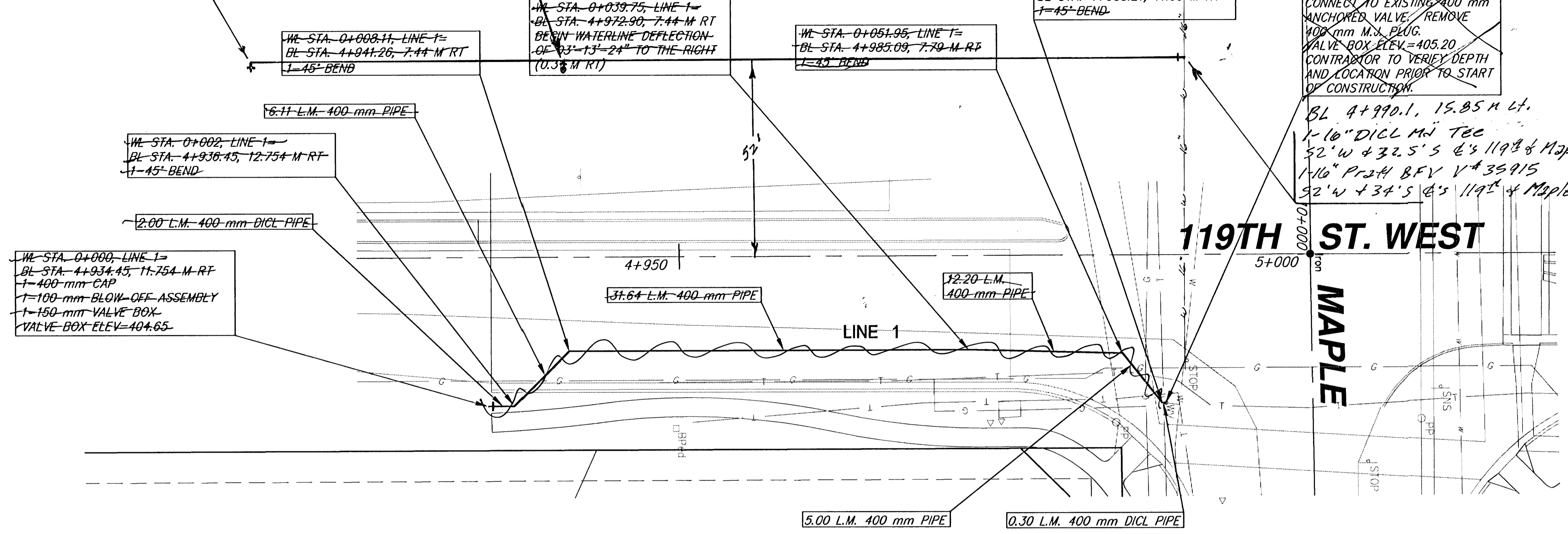
BL 4+915.26, 15.85 M LT.
2" CLOW V#12
3 1/2' W & 82'S FH

BL 4+940.26, 15.85 M LT.
Fire Hydrant Assy CLOW FH H#10865
L=3 1/2, 52'W & 196'S @ 119th & Maple
6" CLOW V#35916

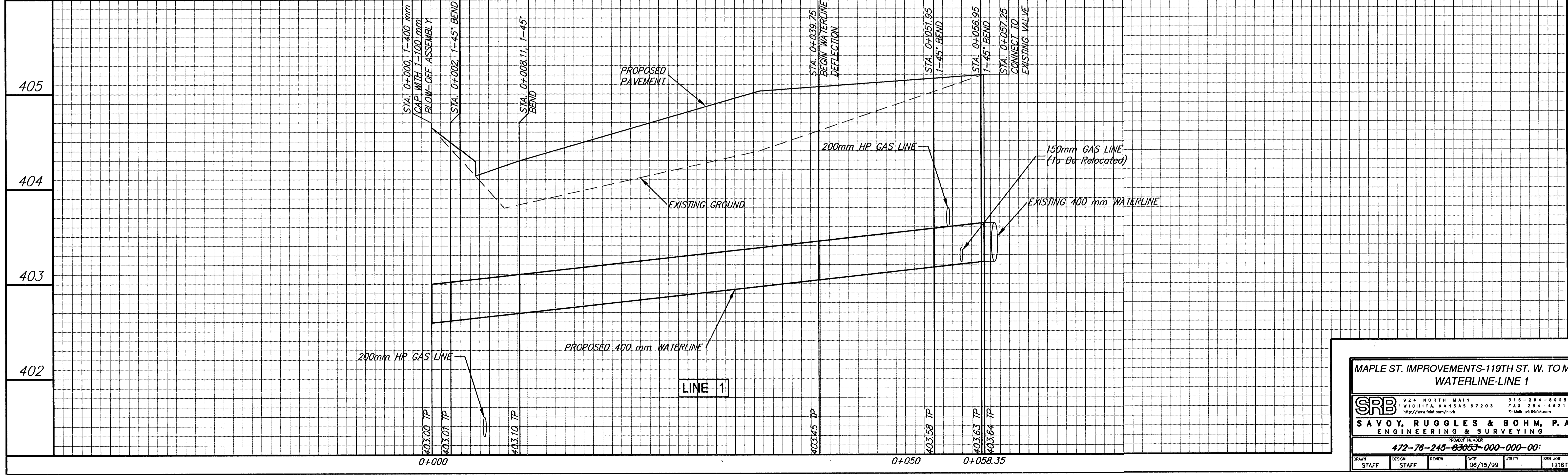
WL STA. 0+056.95, LINE 1=
BL STA. 4+988.21, 11.69 M RT
1-45° BEND

WL STA. 0+057.25, LINE 1=
BL STA. 4+988.50, 11.72 M RT
CONNECT TO EXISTING 400 mm ANCHORED VALVE. REMOVE 400 mm M.S. PLUG.
VALVE BOX ELEV=405.20
CONTRACTOR TO VERIFY DEPTH AND LOCATION PRIOR TO START OF CONSTRUCTION.

BL 4+990.1, 15.85 M LT.
1-16" DI CL M Tee
52'W & 32.5'S @ 119th & Maple
1-16" Pr 2H BFV V#35915
52'W & 34'S @ 119th & Maple



*** UNLESS OTHERWISE NOTED, ALL ELEVATIONS SHOWN ARE TO TOP OF PIPE ***



MAPLE ST. IMPROVEMENTS-119TH ST. W. TO MAIZE RD. WATERLINE-LINE 1

SRB 924 NORTH MAIN WICHITA, KANSAS 67203 http://www.fdot.com/~srb

316-264-8008 FAX 264-4821 E-Mail: srbs@fdot.com

SAVOY, RUGGLES & BOHM, P.A.
ENGINEERING & SURVEYING

PROJECT NUMBER: 472-76-245-83853-000-000-001

DATE: 06/15/99

SRB JOB: 1218T

Water01.dwg