

FHWA REGION NO.	STATE	PROJECT NUMBER	FISCAL YEAR	SHEET NUMBER	TOTAL SHEETS
7	KANSAS	87N-0127-01	1999	42	90

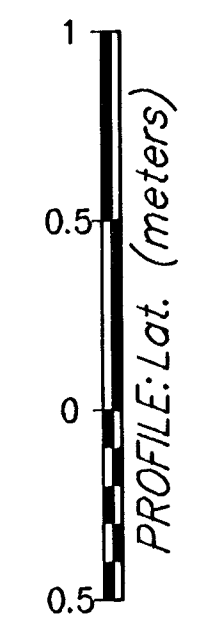
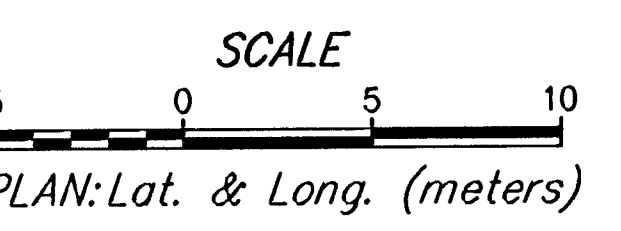
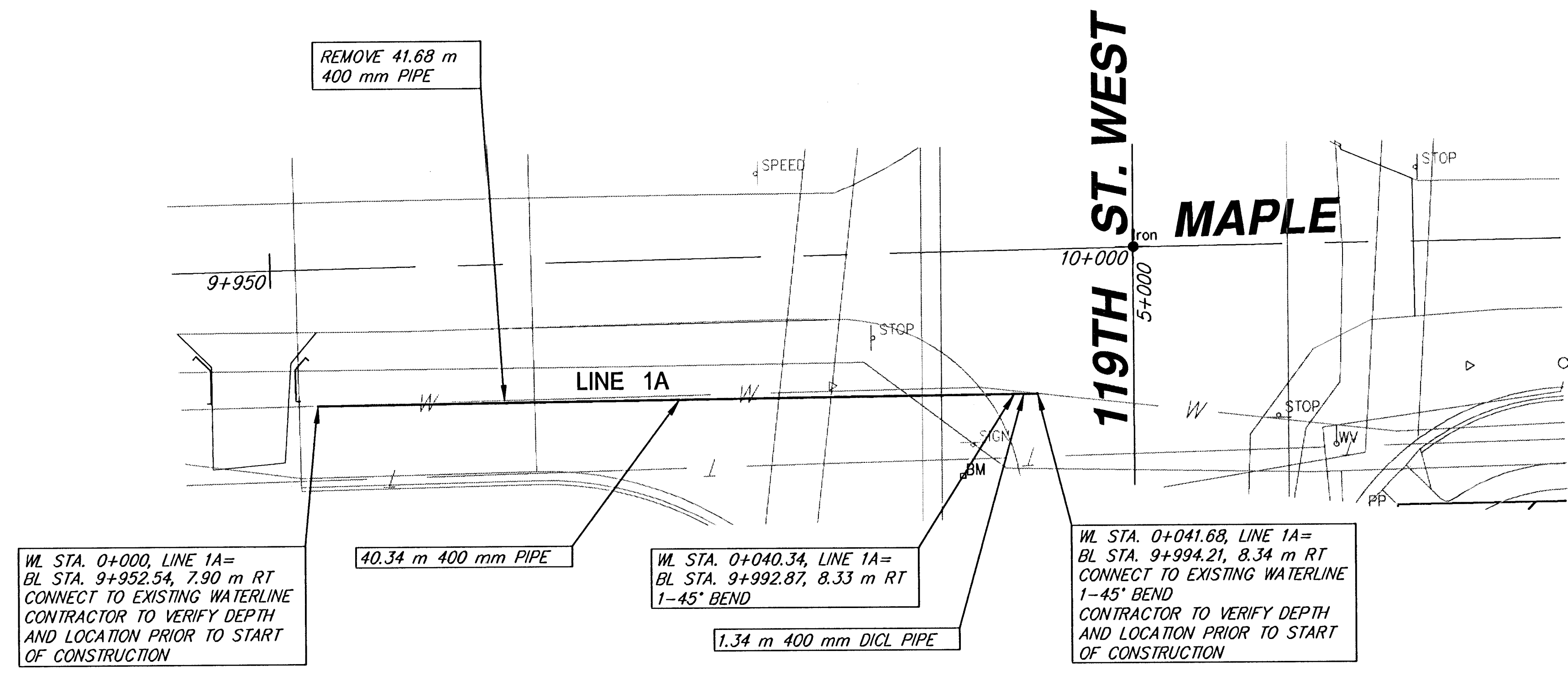
BY	DATE
REFERENCES NOTED	REFERENCES CHECKED

**ADDITIONAL ITEMS TO BE ADJUSTED**

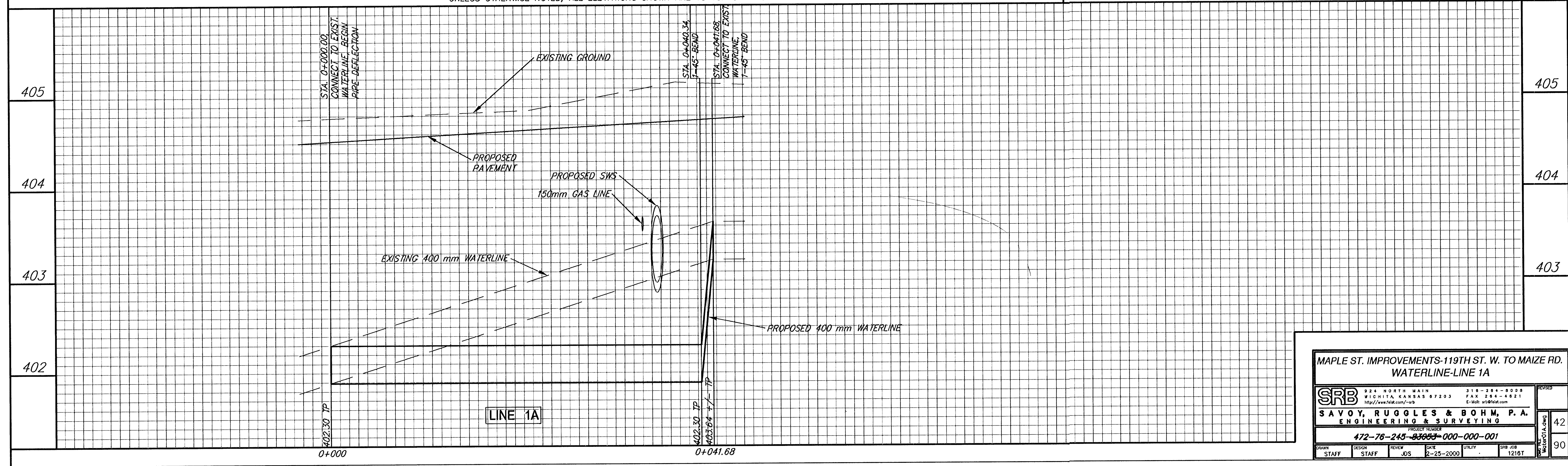
STATION	OFFSET	ITEM	RESOLUTION	NEW ELEVATION
9+925.9	Rt.	Valve box	Adjust with paving	404.12
9+926.2	Rt.	Valve box	Adjust with paving	404.12
9+979.9	Lt.	Valve box	Adjust with paving	404.78
9+980.4	Lt.	Valve box	Adjust with paving	404.59
10+011.8	Rt.	Valve box	Adjust with paving	405.17
10+201.7	Rt.	Valve box	Adjust with paving	405.97
10+254.5	Rt.	Air release	Adjust with paving	406.19
10+327.6	Lt.	Valve box	Adjust with paving	406.17
10+423.7	Rt.	Valve box	Adjust with paving	406.31
10+426.1	Rt.	2-V. boxes	Adjust with paving	406.33, 406.63
10+516.0	Lt.	Meter	Adjust with paving	407.30
10+584.0	Lt.	Air release	Adjust with paving	407.90
10+604.3	Rt.	Air release	Adjust with paving	407.64
10+705.6	Lt.	Valve box	Adjust with paving	406.65
10+705.9	Lt.	Valve box	Adjust with paving	406.70
10+741.0	Rt.	Valve box	Adjust with paving	406.13
10+801.0	Lt.	Valve box	Adjust with paving	405.90
10+947.5	Lt.	Valve box	Adjust with paving	406.46
11+058.3	Lt.	Valve box	Adjust with paving	405.69
11+204.7	Lt.	Valve box	Adjust with paving	404.68
11+214.6	Rt.	Valve box	Adjust with paving	404.61
11+240.1	Lt.	Valve box	Adjust with paving	404.46
11+318.3	Rt.	Valve box	Adjust with paving	404.03
11+399.0	Lt.	Valve box	Adjust with paving	403.93

TO BE ADJUSTED BY CONTRACTOR AND TO BE BID 'LUMP SUM VALVE BOXES, METERS & AIR RELEASES ADJUSTED'.

SRB



\*\*\* UNLESS OTHERWISE NOTED, ALL ELEVATIONS SHOWN ARE TO TOP OF PIPE \*\*\*



MAPLE ST. IMPROVEMENTS-119TH ST. W. TO MAIZE RD.  
WATERLINE-LINE 1A

**SRB** 324 NORTH MAIN WICHITA KANSAS 67203 http://www.srb.com/~srb

316-264-8008 FAX 264-4821 E-Mail: srb@srbc.com

**SAVOY, RUGGLES & BOHM, P.A.**  
ENGINEERING & SURVEYING

PROJECT NUMBER  
**472-76-245-83653-000-000-001**

DESIGN STAFF	REVIEW STAFF	DATE	UTILITY	SRB JOB
JDS	JDS	2-25-2000		1216T

42  
90