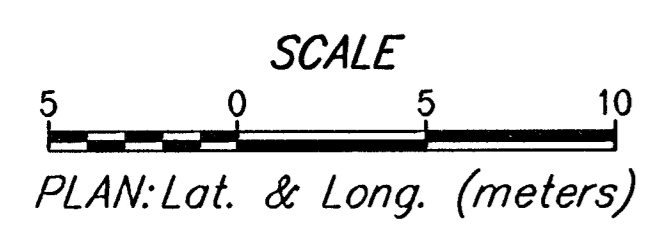
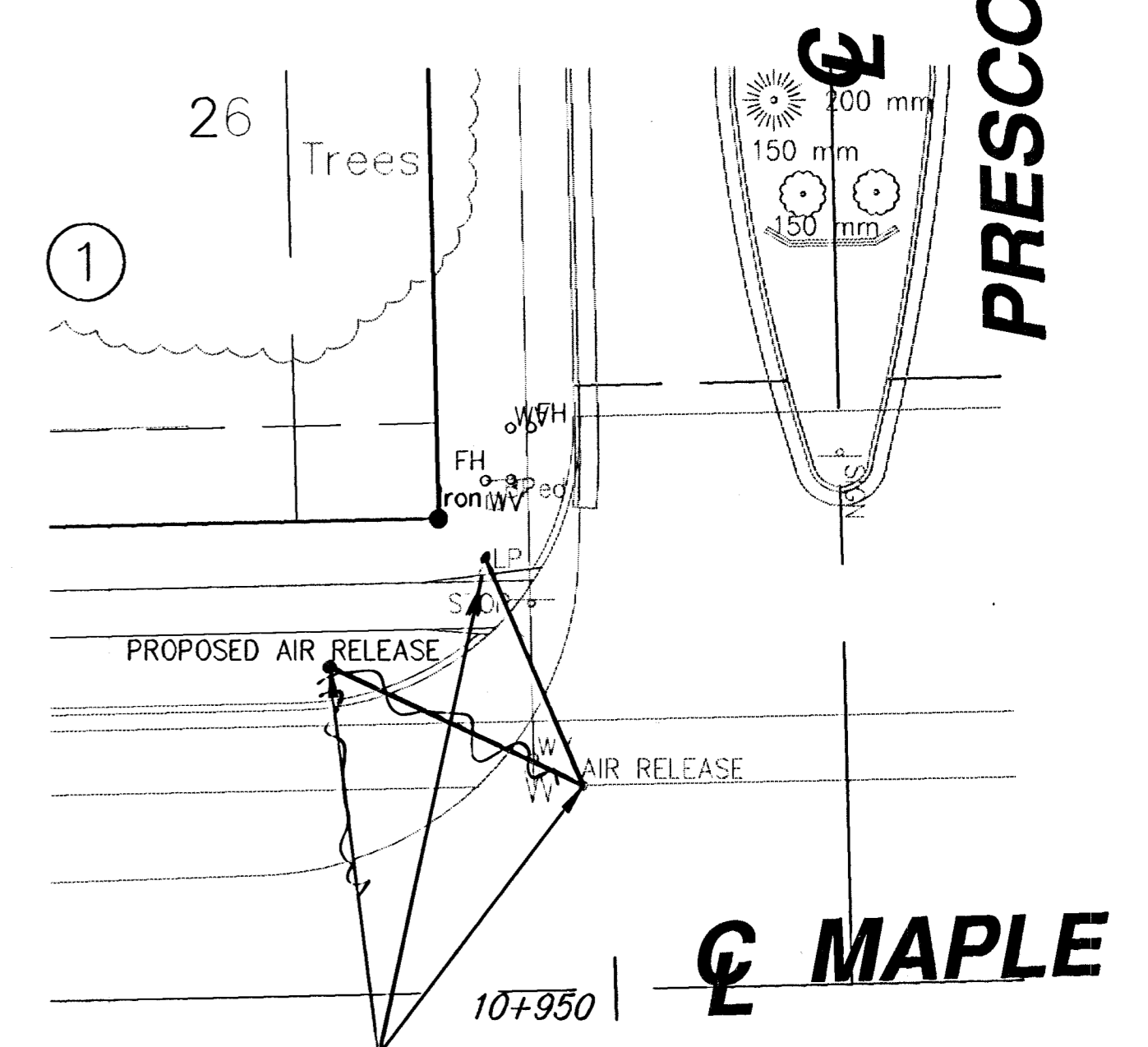
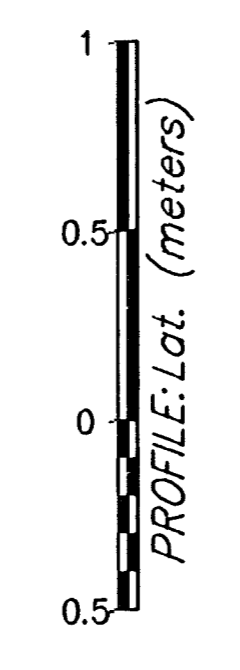
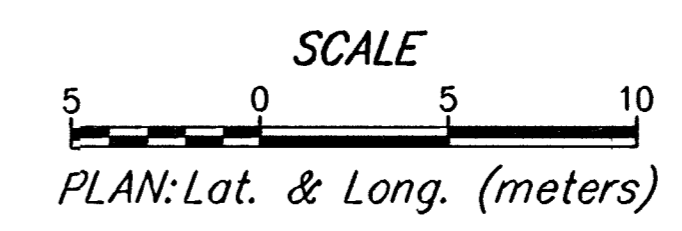
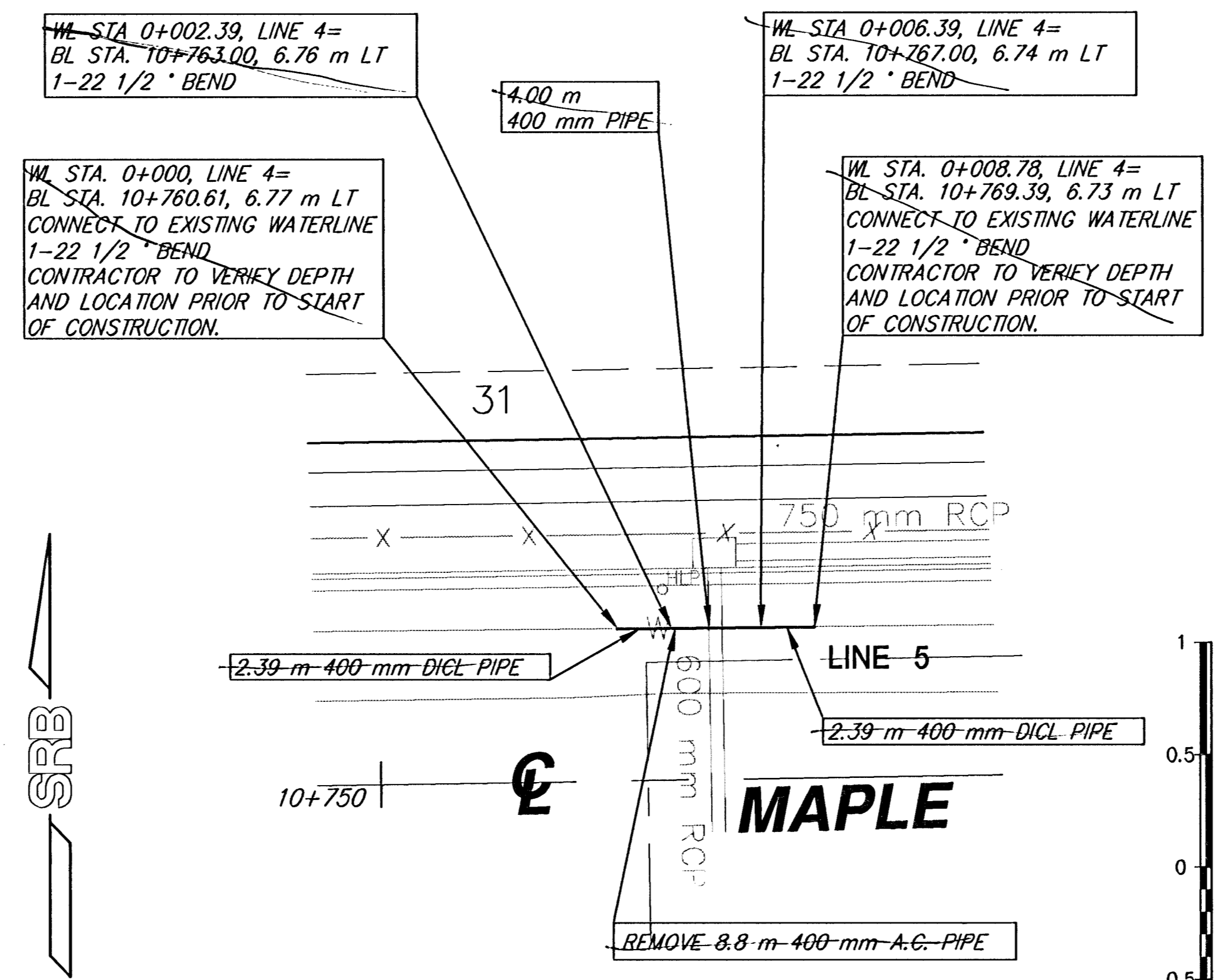
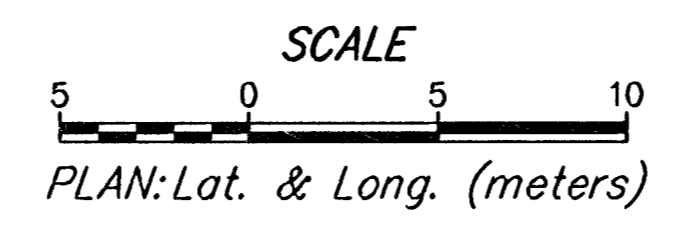
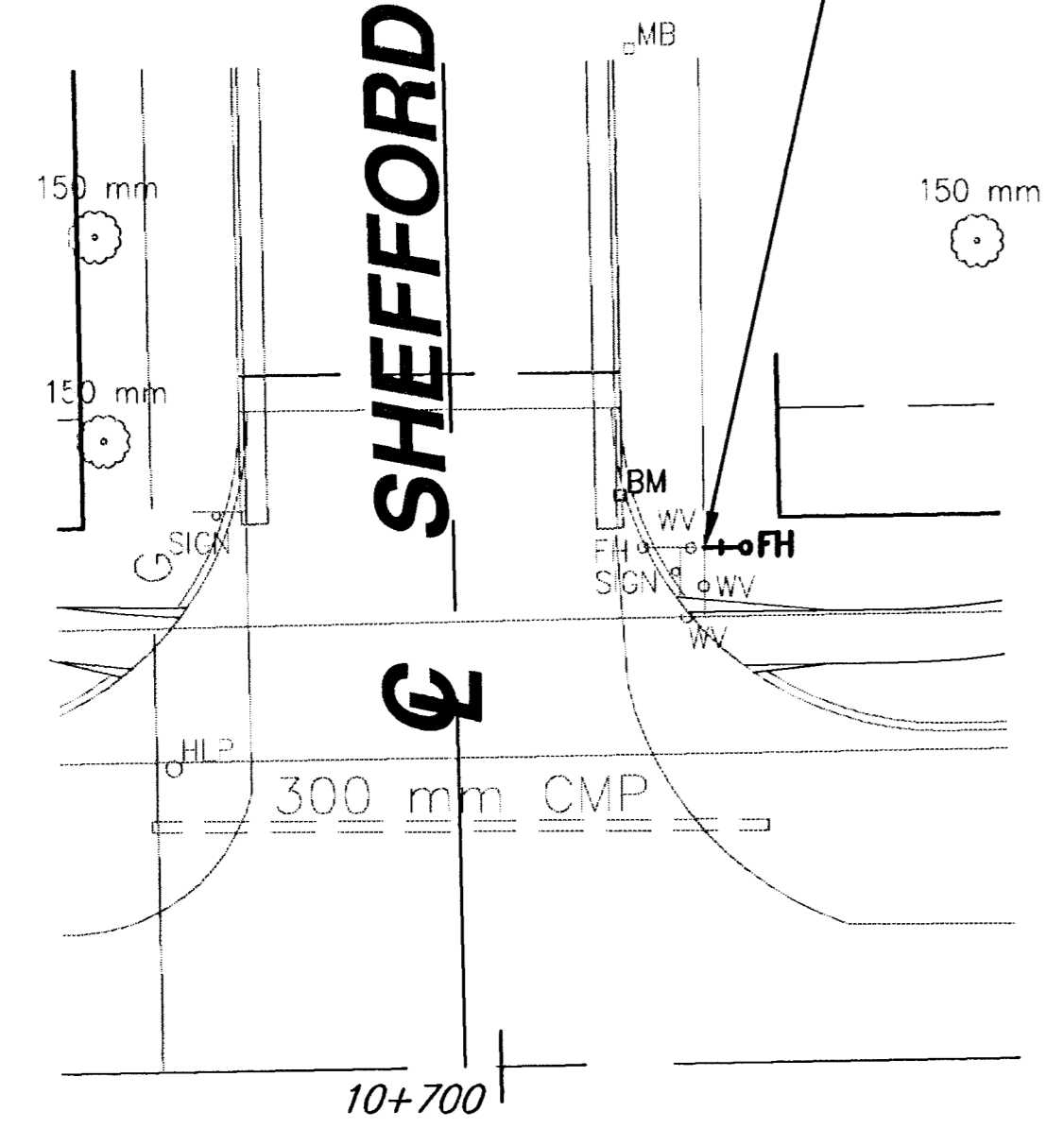
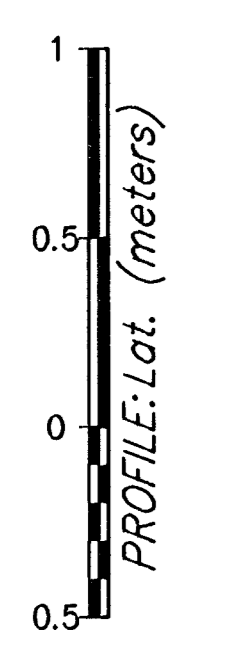


FHWA REGION NO.	STATE	PROJECT NUMBER	FISCAL YEAR	SHEET NUMBER	TOTAL SHEETS
7	KANSAS	STP-N012 (701)	1999	47	90



CLOW FH # 5982
 47 1/2' N + 29 1/2' E of S. Shefford & Maple
 0" CLOW V # 18907
 4' W FH
 tapping sleeve
 5' W FH

WL STA. 0+000, FH=
 BL STA. 10+706.94, 14.43 m LT
 ROTATE TEE 180° TO THE EAST
 INSTALL 1-FH ASSEMBLY
 LENGTH=1.37 m
 BURY LINE ELEVATION=406.73
 VALVE BOX ELEVATION=406.70
 RETURN SALVAGED FH TO THE
 CITY OF WICHITA WATER DEPT.



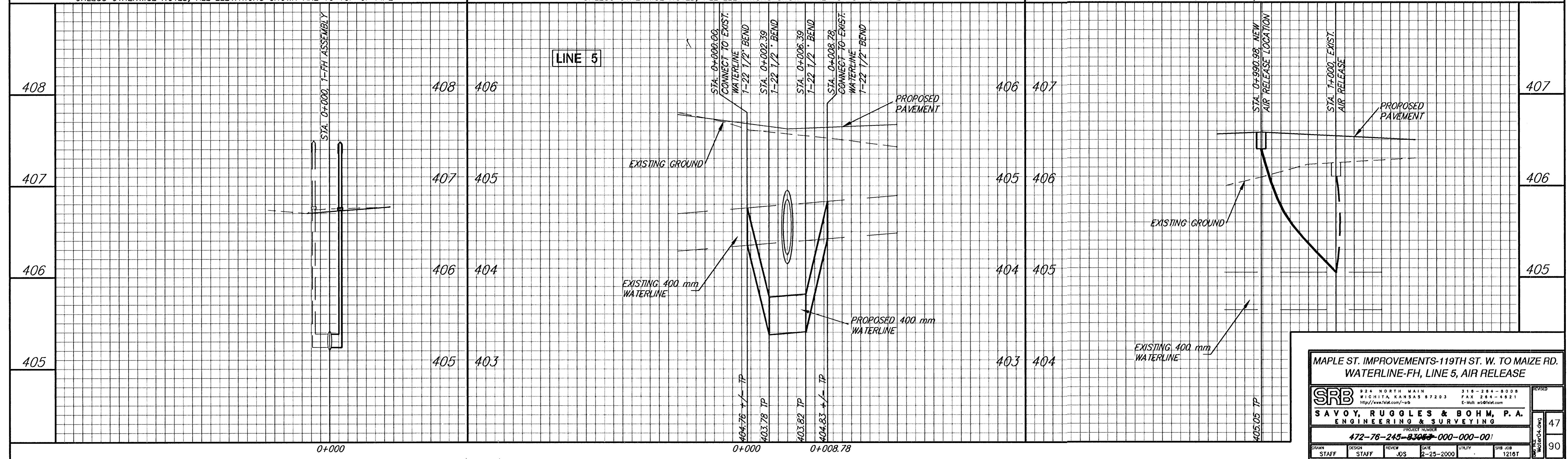
WL STA. 1+000.00
 BL STA. 10+949.09, 6.56 m LT=
 MOVE EXISTING AIR RELEASE TO
 BL STA. 10+941.00, 10.55 LT=
 WL STA. 0+990.98
 TOP LID ELEVATION=406.62

14 1/2' S + 4 1/2' W FH # 6763
 1" Cap 39 1/2' S + 14' E FH # 6763
 AR V # 18249

*** UNLESS OTHERWISE NOTED, ALL ELEVATIONS SHOWN ARE TO TOP OF PIPE ***

*** UNLESS OTHERWISE NOTED, ALL ELEVATIONS SHOWN ARE TO TOP OF PIPE ***

*** UNLESS OTHERWISE NOTED, ALL ELEVATIONS SHOWN ARE TO TOP OF PIPE ***



MAPLE ST. IMPROVEMENTS-119TH ST. W. TO MAIZE RD.
 WATERLINE-FH, LINE 5, AIR RELEASE

SRB 924 NORTH MAIN 316-264-8008
 WICHITA, KANSAS 67203 FAX 264-4921
 http://www.srb.com/~srb E-Mail: srb@srb.com

SAVOY, RUGGLES & BOHM, P.A.
 ENGINEERING & SURVEYING

PROJECT NUMBER
472-76-245-8305-000-000-001

DESIGN STAFF DATE 2-25-2000 DUTY SRB JOB 1216T

47
 90