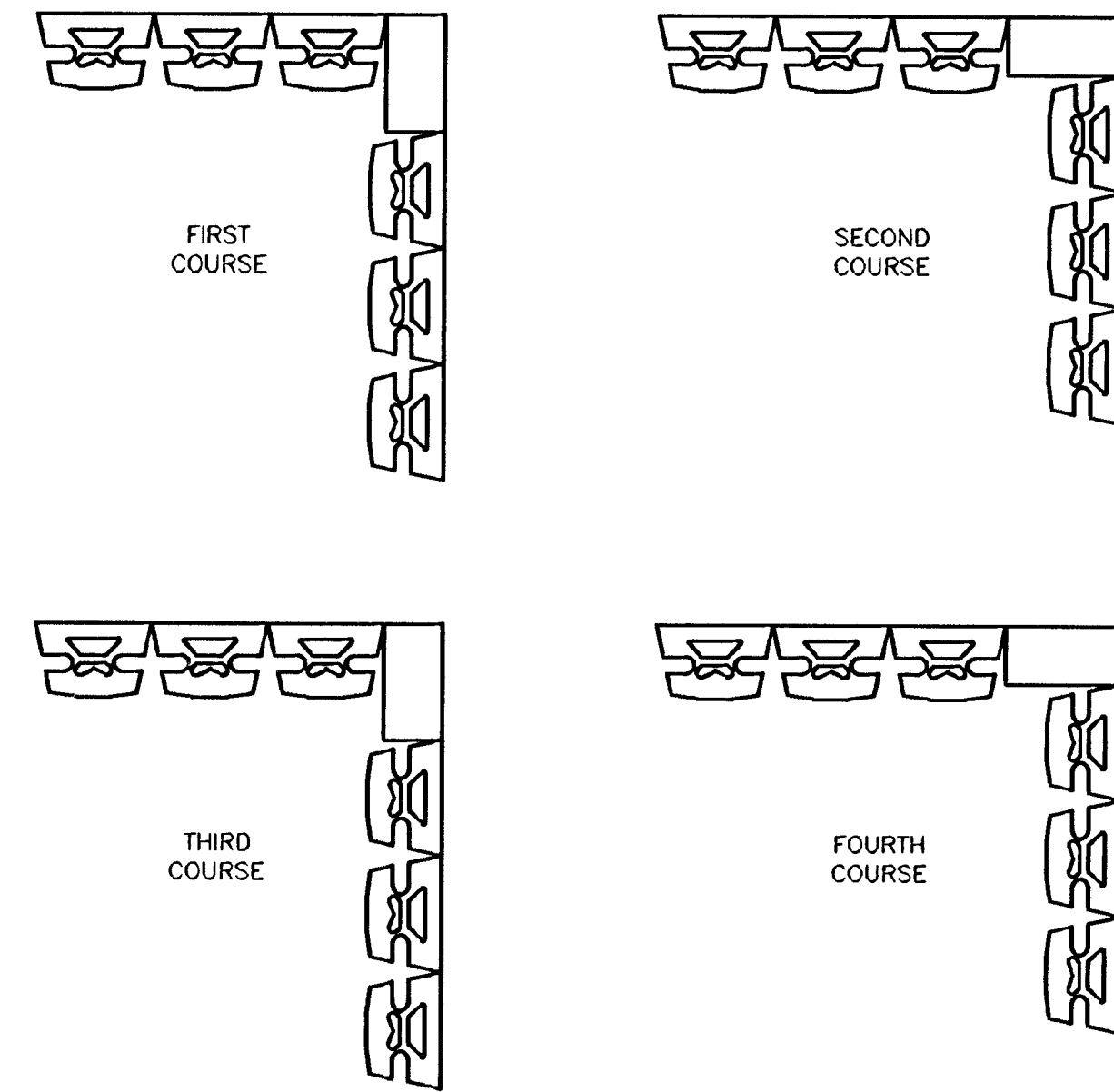


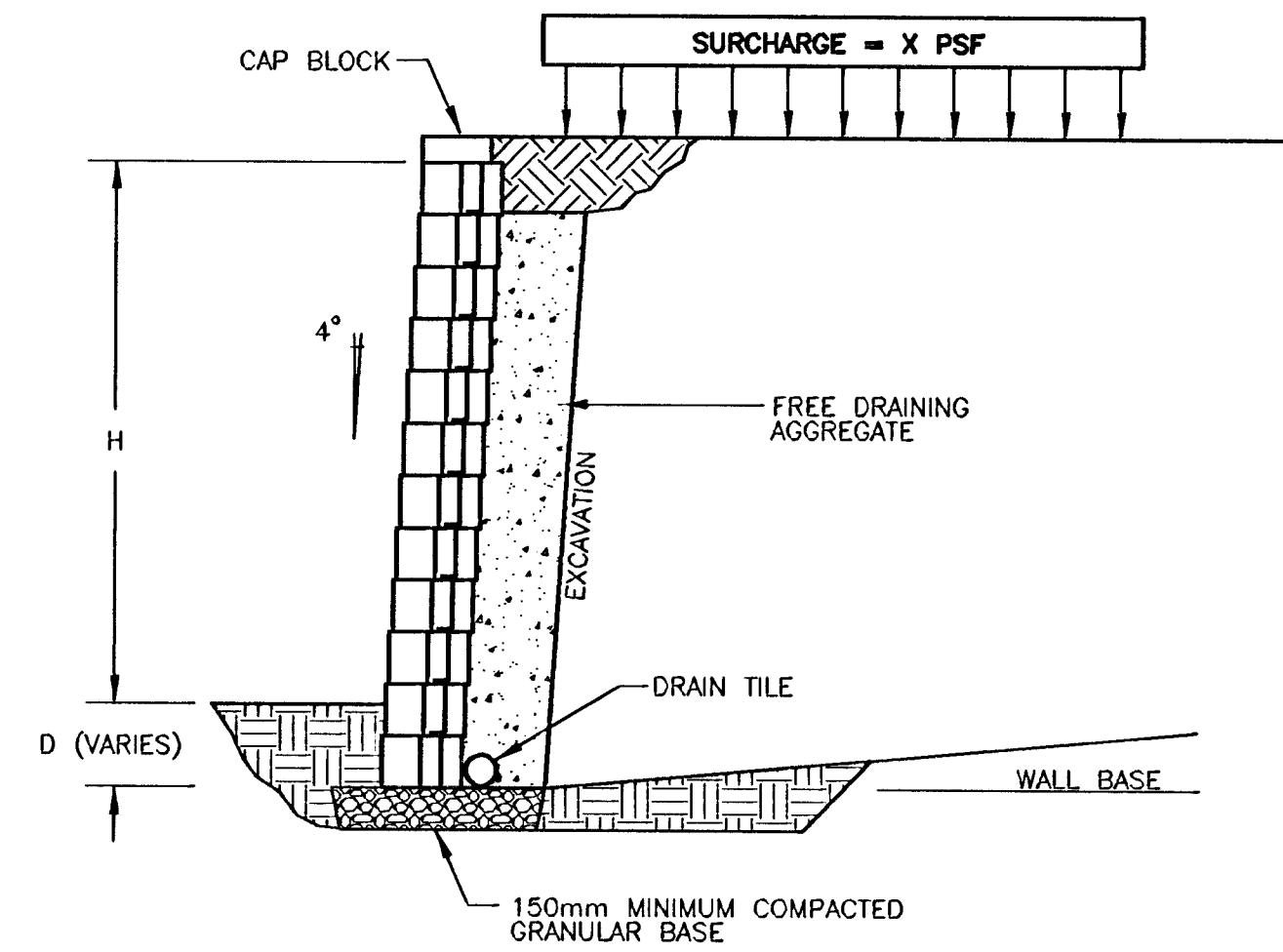
FHWA REGION NO.	STATE	PROJECT NUMBER	FISCAL YEAR	SHEET NUMBER	TOTAL SHEETS
7	KANSAS	87N-0127-01	1999	48	90

DATE	
BY	
REFERENCES NOTED	
REFERENCES CHECKED	

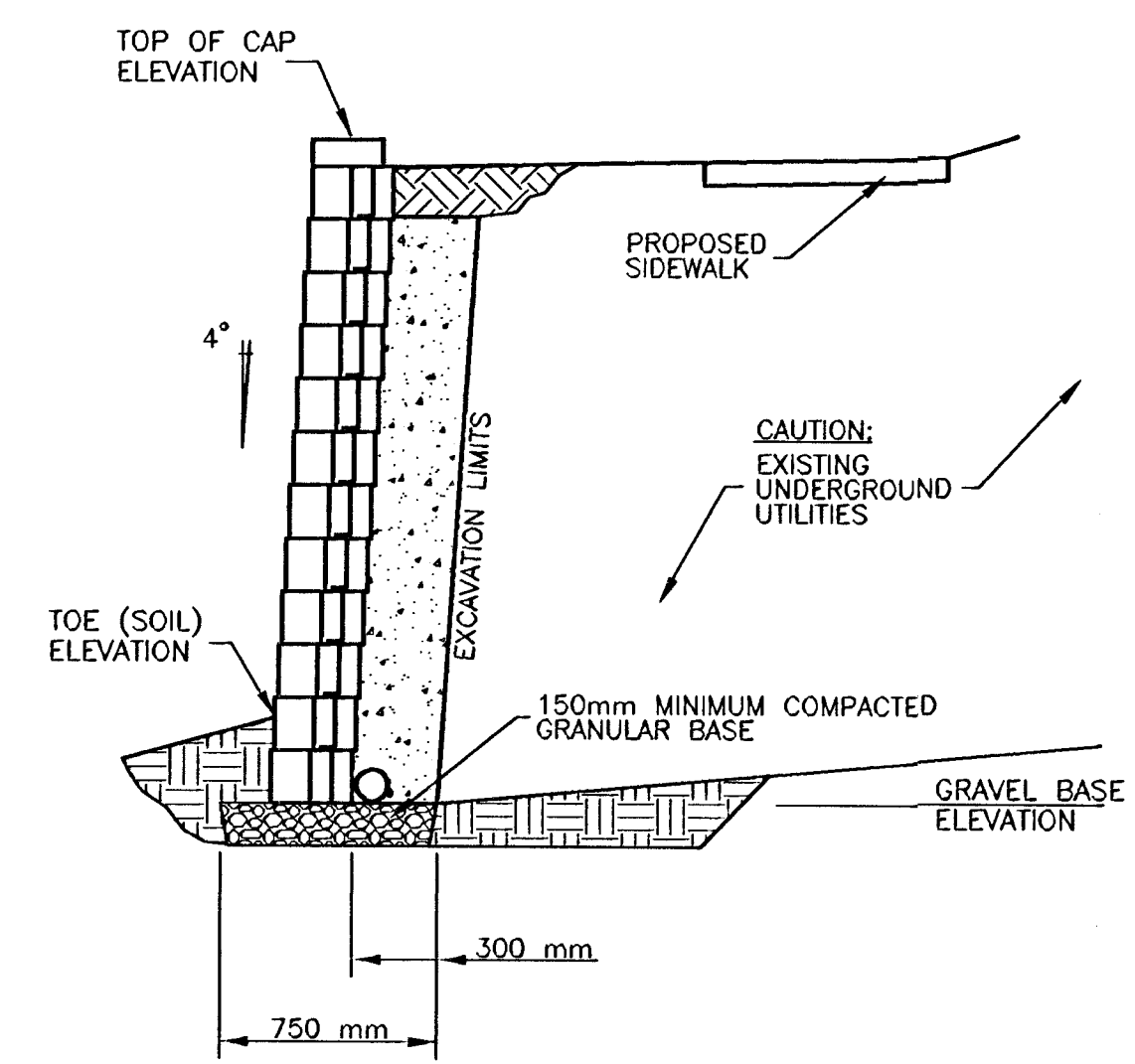


ANCHOR VERTICA/VERTICA PRO CORNER UNIT

ANCHOR VERTICA - STRAIGHT UNITS
TYPICAL 90° OUTSIDE CORNERS

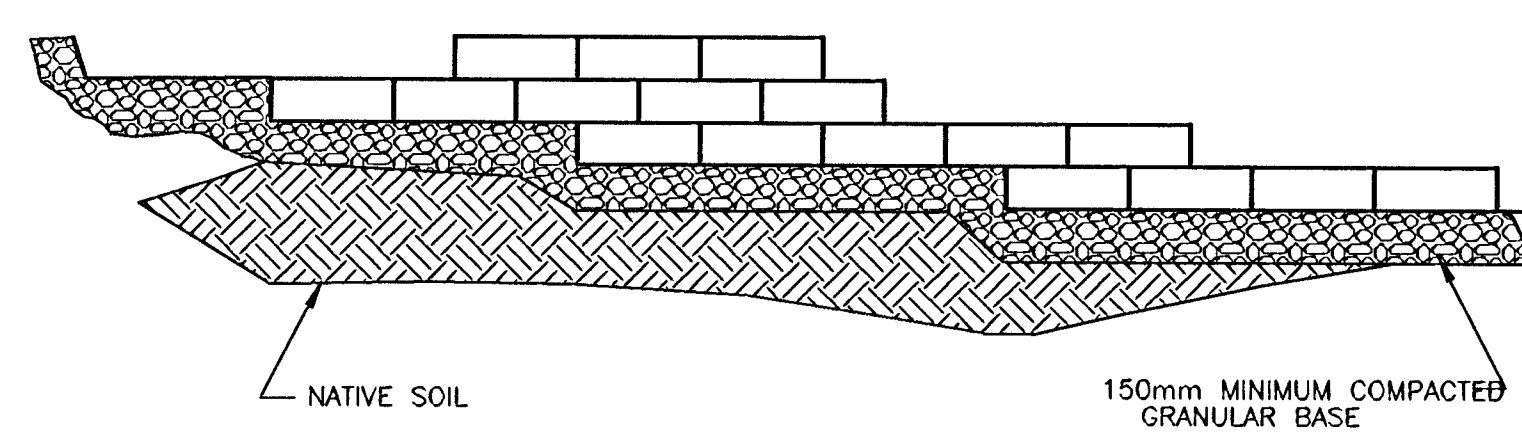
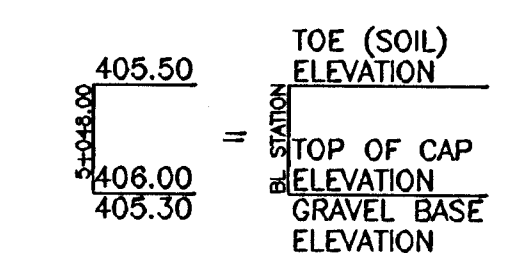


ANCHOR VERTICA - SURCHARGE BEHIND WALL

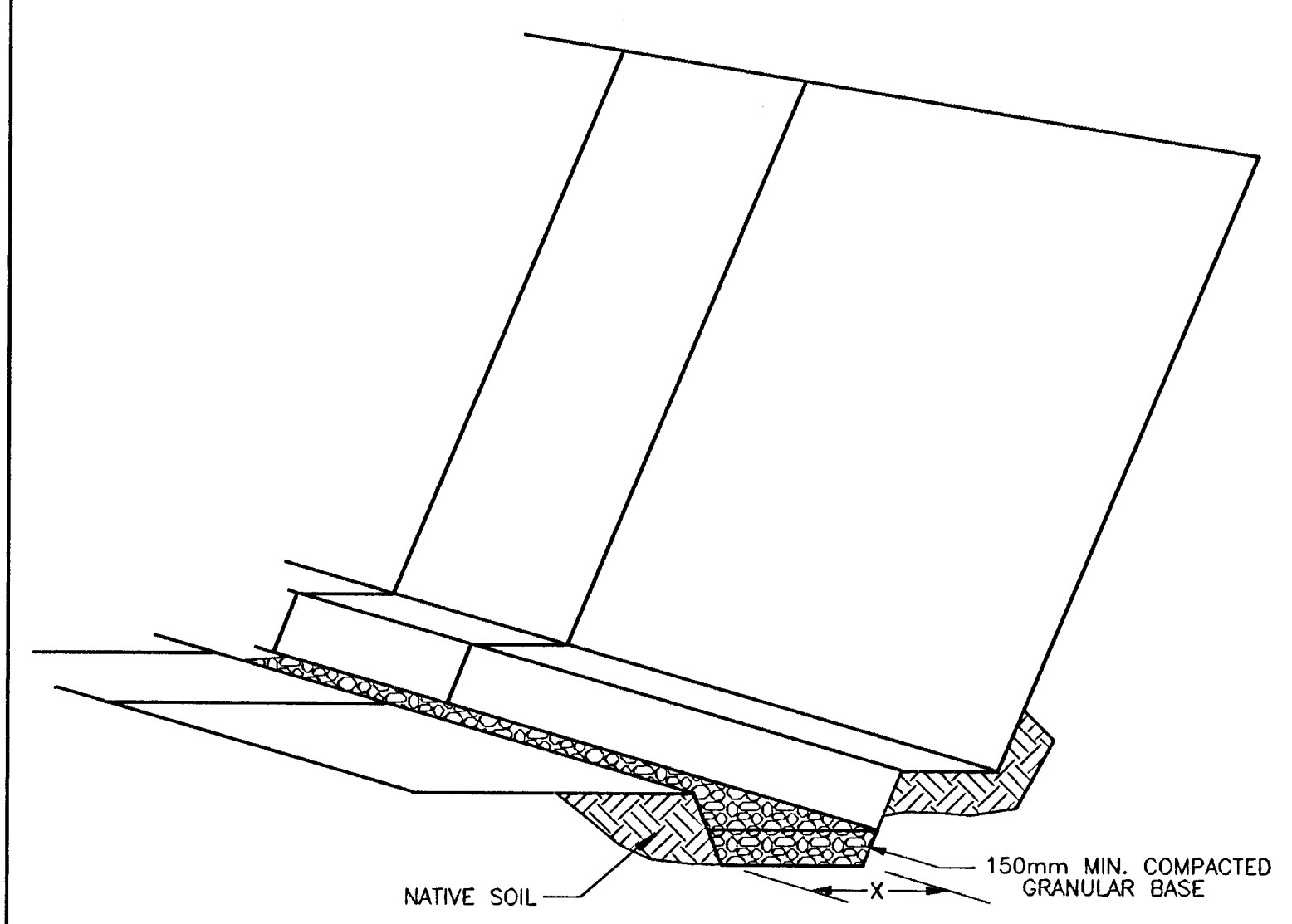


ANCHOR VERTICA - DIMENSIONS

ANCHOR WALL
FINISHED GRADES DETAIL

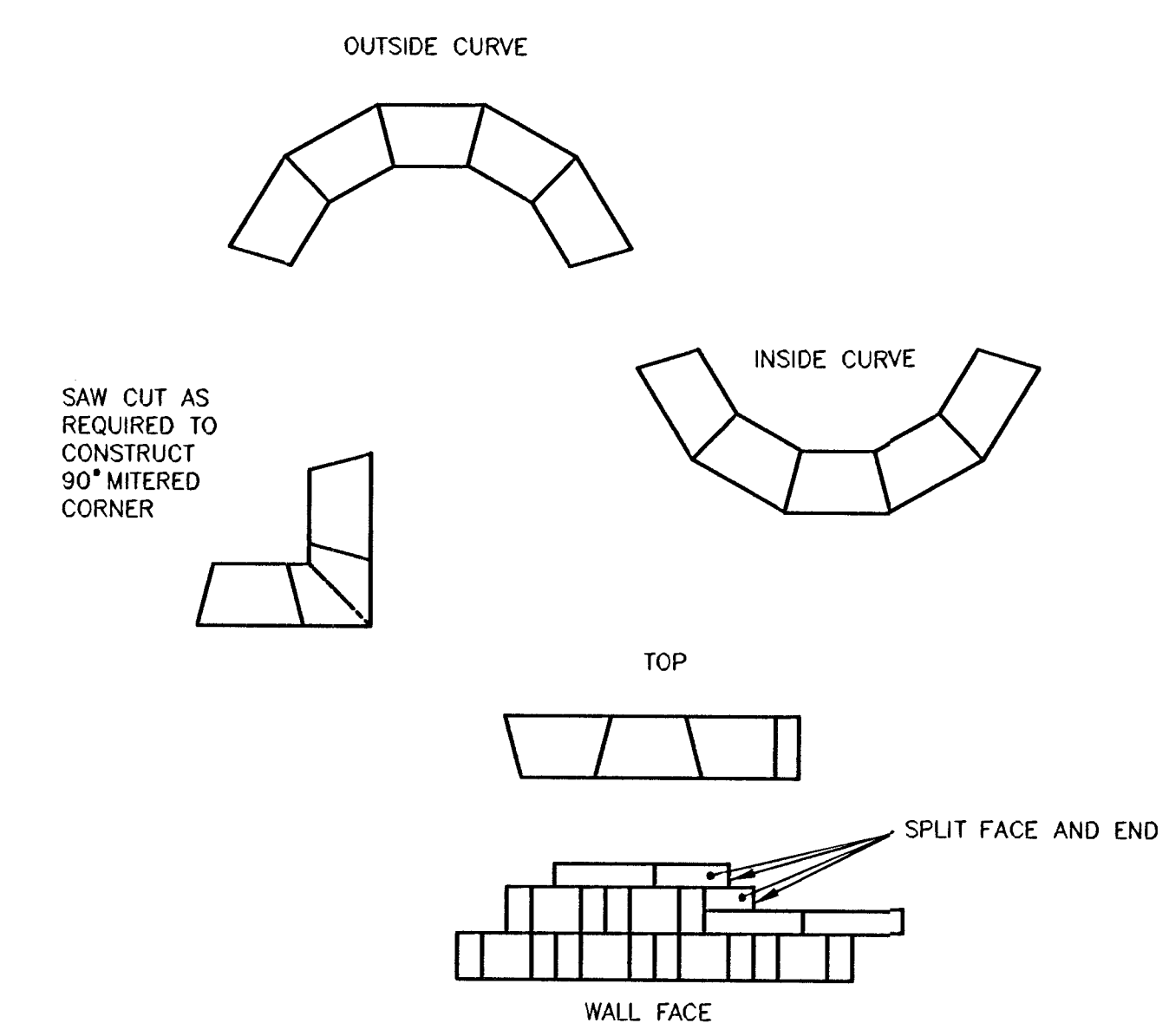


TYPICAL STEP-UP DETAIL
(ALL PRODUCTS)



NOTE: X IS DEPENDENT ON ANCHOR PRODUCT USED.

TYPICAL BASE PREPARATION
(ALL PRODUCTS)



- NOTES:
1. USE ADHESIVE TO SECURE CAPS IN PLACE
 2. ALTERNATE SHORT AND LONG CAP FACES EVERY OTHER CAP TO ACHIEVE A STRAIGHT WALL
 3. VARIOUS COMBINATIONS OF LONG AND SHORT CAP FACES WILL BE NECESSARY FOR RADII GREATER THAN THE MINIMUM
 4. CUT CAPS TO FIT
 5. ALWAYS START CAPPING WALL FROM LOWEST ELEVATION

ANCHOR VERTICA/VERTICA PRO
DESIGN DETAILS - CAP BLOCK

ANCHOR WALL DESIGN DETAILS

STRUCTURE SUMMARY	
WALL TYPE:	GRAVITY STRUCTURE
ANCHOR WALL UNIT TYPE:	ANCHOR VERTICA (8 in)
CAP UNIT:	YES
REINFORCEMENT:	NONE
DESIGN SUMMARY	
DESIGN METHOD:	NCMA
SOIL DATA	
RETAINED SOIL:	BROWN SILT LOAM
LEVELING PAD SOIL:	GRAVEL
FOUNDATION SOIL:	BROWN SILTY CLAY LOAM
ANCHOR WALL UNITS	
STANDARD UNITS	
UNIT HEIGHT (mm):	203
UNIT WIDTH (mm):	292
UNIT LENGTH (mm):	457.2
SETBACK (mm):	14.27
WEIGHT (infield) (kg):	58.7
UNIT WEIGHT (infield) (kN/m ³):	20.5
CENTER OF GRAVITY (mm):	146.1
CAP UNITS	
UNIT HEIGHT (mm):	102
UNIT WIDTH (mm):	254
UNIT LENGTH (mm):	371.6
SETBACK (mm):	NONE
WEIGHT (infield) (kg):	19.1
UNIT WEIGHT (infield) (kN/m ³):	19.48
CENTER OF GRAVITY (mm):	127

NOTE: SIMILAR TYPE SEGMENTAL RETAINING WALL BY ALTERNATE MANUFACTURERS MAY BE USED WITH THE PERMISSION OF THE ENGINEER. CONTRACTOR MUST SUBMIT DESIGN CRITERIA AND DETAILS TO THE ENGINEER FOR REVIEW AND APPROVAL PRIOR TO CONSTRUCTION.

MAPLE AVE. IMPROVEMENTS-119TH ST. W. TO MAIZE RD.
SEGMENTAL RETAINING WALL

SRB 924 NORTH MAIN WICHITA, KANSAS 67203
316-264-8000 FAX 264-4821
http://www.srb.com/~srb E-Mail: srb@srbit.com

SAVOY, RUGGLES & BOHM, P.A.
ENGINEERING & SURVEYING

PROJECT NUMBER
472-78-245-83053-000-001

DRAWN	DESIGN	REVIEW	DATE	UTILITY	SRB JOB
STAFF	STAFF	JDS	2-25-2000		1216T

48
90